



IRP Update: Discussion of Reliability

Member Agency Managers Meeting
January 15, 2021

1

Overview

- IRP Past and Current Reliability Goal
- IRP Scenarios Put Reliability to Test
- Preliminary “Gap” Analysis
- What Does Less Than 100% Reliability Mean
- Discussion

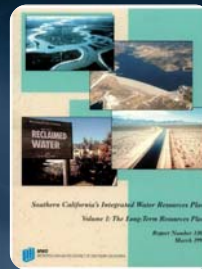
2

Past and Current IRP Reliability Goal

Full capability to meet all retail-level water demands under all foreseeable hydrologic events

1996 IRP established ...

- Metropolitan would provide all of the firm wholesale water demands to its member agencies in 98 out of 100 years, and only in the remaining years consider implementing a shortage allocation plan for imported supply deliveries
- When this level of wholesale reliability is combined with the coordinated approach proposed in this resources plan, the region will have the full capability to meet all retail-level water demands at all times



MAMM

Item 6c Slide 3

January 15, 2021

3

IRP Scenarios Put Reliability to Test

- Scenarios examine more than hydrologic variability
- Scenarios broaden our view of “foreseeable” conditions
- Scenarios reveal different challenges to reliability
- Policy tradeoffs to meet a reliability goal are informed by scenarios

Metropolitan’s Mission Statement:

“...to provide its service area with adequate and **reliable** supplies of high-quality water to meet present and future needs in an environmentally and economically responsible way.”

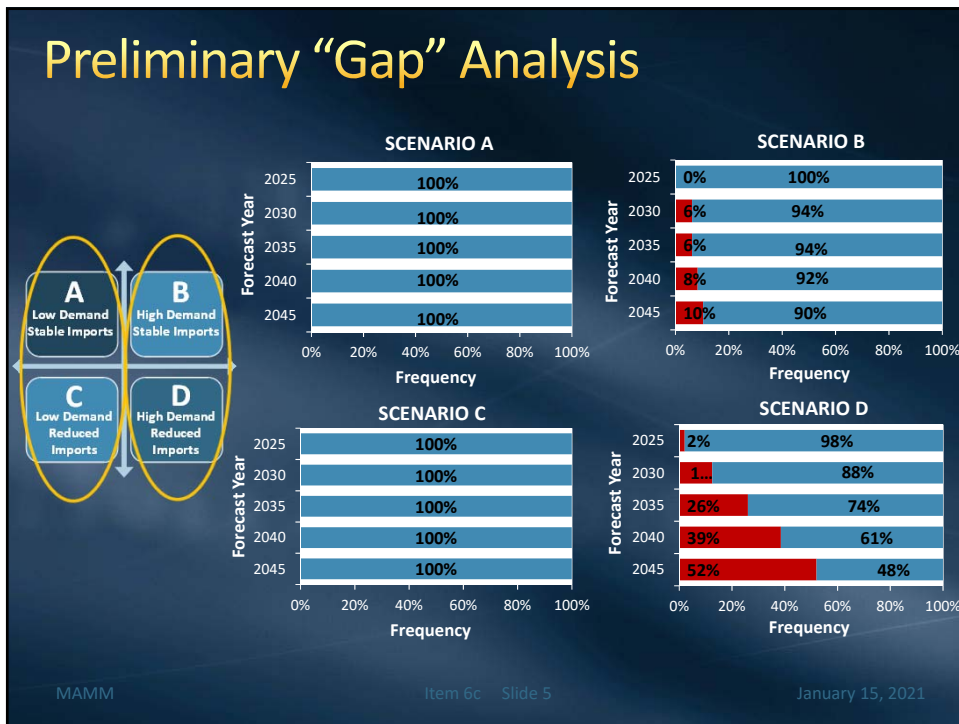


MAMM

Item 6c Slide 4

January 15, 2021

4



5

Do We Make Adjustments To Update The Reliability Goal?

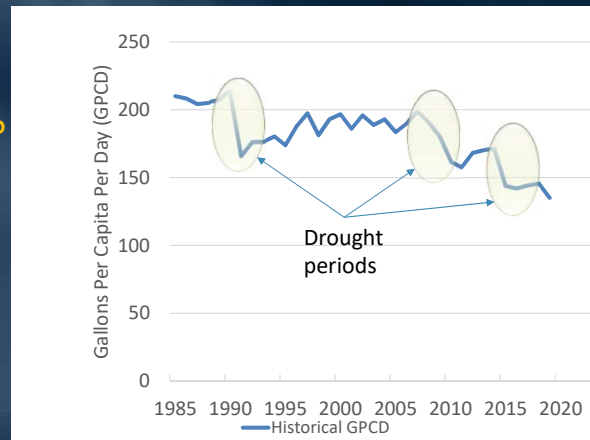
- Account for more than “hydrologic” variability?
- Account for calls for consumers to voluntarily reduce use?
- Regional vs. individual reliability
 - Opt-in/Opt-out?

MAMM Item 6c Slide 6 January 15, 2021

6

Voluntary Calls For Conservation

- Water agencies responded in past droughts to calls for conservation (mandatory and voluntary)
 - Consider relying on future conservation?
 - Effect of demand hardening?
 - What is an acceptable reduction?



MAMM

Item 6c Slide 7

January 15, 2021

7

Opt-In/Opt-Out

- In May 2010, Metropolitan Board requested assessment of Opt-Out approach for conservation program
- Staff assessment of Opt-Out in August 2010 informational letter
 - Difficult to develop and implement
 - Inconsistent with other policies and programs
 - Policies now designed for regional reliability
 - Difficult to separate reliability benefits

MAMM

Item 6c Slide 8

January 15, 2021

8



9



10