



WATER TOMORROW

2020 Integrated Resources Plan

Identifying Drivers of Change

Building the Foundation for Scenario Planning

Member Agency Managers Meeting
May 15, 2020

Outline

- Review Feedback from May 13 Member Agency Technical Workgroup Meeting
- Schedule and Process
- Drivers of Change Brainstorm
- Next Steps

Member Agency Workgroup Accomplishments

- High level of participation: 57 in attendance plus 9 MWD staff
- Good discussion of process and schedule
- Successful “brainstorming” of drivers of change

5/15/2020

Member Agency Managers Meeting

Slide 3

Member Agency Workgroup Accomplishments cont'd

- Twenty-seven Drivers of Change identified
 - Legislative: 5
 - Regulatory: 5
 - State Water Project: 5
 - Water Demands: 4
 - Infrastructure: 3
 - Colorado River: 3
 - Local Water Supplies: 2
- Sharing for accuracy
- All input will be consolidated in survey

5/15/2020

Member Agency Managers Meeting

Slide 4

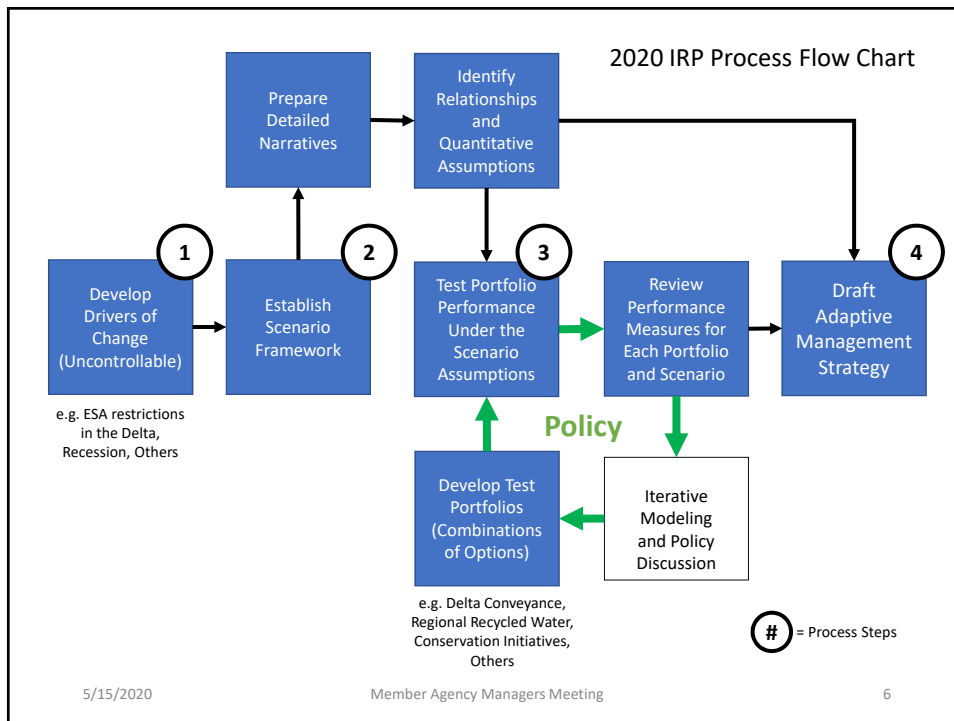
Planning Glossary

Term	Definition	Synonyms
Drivers of Change	Specific factors whose future values and outcomes are uncertain but significantly impact future water supply reliability	Exogenous Uncertainties
Learning Scenario	A detailed scenario that includes quantified outcomes of various Drivers of Change and can be used to inform the development of specific water resources and demand management actions and signposts	Plausible Future, Future State
Options	Both resource investments and policy actions that Metropolitan and Member Agencies can undertake to achieve policy goals	Levers, Measures
Portfolio	A combination of options for testing under the conditions established in each Learning Scenario	Resource Mix
Water Supply Reliability	Consumers having access to and receiving water supply to meet their water demands with no curtailment or pricing penalties	

5/15/2020

Member Agency Managers Meeting

5



5/15/2020

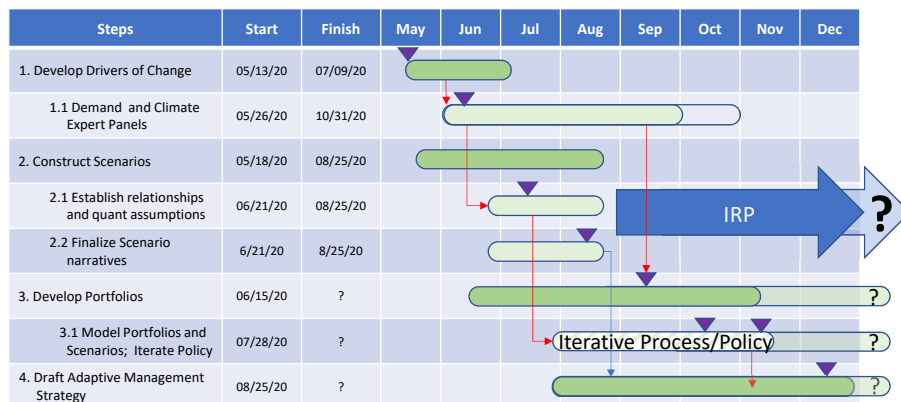
Member Agency Managers Meeting

6

IRP Process Schedule



2020



Predicted Critical Path → ▼ = Member Agency Input and Review Throughout the Process (examples only)
 Member Agency Managers Meeting

5/15/2020

7

Where We Need Input



- Brainstorm Drivers of change
- Feedback on survey approach
- Ranking of importance

5/15/2020

Member Agency Managers Meeting

Slide 8

Where We Need Input



- Input/feedback on draft scenarios
- Feedback on quantified aspects within each scenario
- Feedback on expert panel input

5/15/2020

Member Agency Managers Meeting

Slide 9

Where We Need Input



- Participation in the iterative process
- Input/feedback on output metrics
- Discussion to inform policy development

5/15/2020

Member Agency Managers Meeting

Slide 10

Where We Need Input



- Input/feedback on reasonable signposts
- Elements of adaptive management strategy

5/15/2020

Member Agency Managers Meeting

Slide 11

First Step in Process



Definition:

“A social, technological, economic, environmental, cultural, or political force in or around the system, a small change in which would have a **big impact on those aspects of the system that matter to you.**”

Adam Kahane, Transformative Scenario Planning

5/15/2020

Member Agency Managers Meeting

Slide 12

Driver of Change Criteria

Answer must be “yes” to all

- ***Is it impactful to***
 - ***the balance of supply and demand?***
 - ***institutional sustainability and integrity?***
- ***Is it largely outside of our control?***

5/15/2020

Member Agency Managers Meeting

Slide 13

Example of a Driver of Change

- ***Continuing declines among endangered species*** – The ESA and continued deterioration of the Sacramento-San Joaquin Delta ecosystem that could further restrict pumping operations
 - Impacts supply development
 - Reduces water supply demand balance reliability
 - Cost to address could be high
 - Largely uncontrollable (due to climate change) from Metropolitan’s standpoint

5/15/2020

Member Agency Managers Meeting

Slide 14

Example of an Option (Not a Driver of Change)

- **Regional Recycled Water Program** – a project that will purify wastewater to produce high quality water that can be used again
 - Increases water supply demand balance reliability
 - Cost to address could be high
 - Controllable from Metropolitan’s standpoint

5/15/2020

Member Agency Managers Meeting

Slide 15

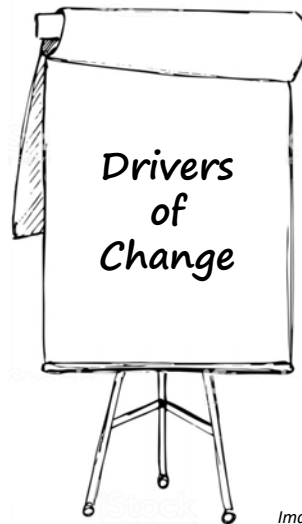


Image by iStock

5/15/2020

Member Agency Managers Meeting

Slide 16

Drivers of Change Survey

- Seeks to identify **IMPORTANCE** of driver of change **TO YOUR AGENCY**
- Uses 5-point scale of importance

Continued subsidence on the California Aqueduct that would reduce Southern California's capacity to capture and move SWP supplies.

Not at all important	Slightly important	Moderately important	Very important	Extremely important

Increased reliance on small-scale decentralized technologies, lessening reliance on the regional water grid.

Not at all important	Slightly important	Moderately important	Very important	Extremely important

Near Term Next Steps

- Compile list of drivers of change
 - Feedback from MA Technical Workgroup
 - MA Managers Meeting today
- Send drivers of change survey to Member Agencies
- Continue to identify drivers of change
 - Stakeholder workshops (May 20 & 22)
 - Share with and receive input from Board (May 26)
 - Technical workshop (June 10)
 - Member agency manager meeting (June 12)
- Incorporate drivers of change into scenario development



5/15/2020

Member Agency Managers Meeting

19