



Regional Recycled Water Program

Engineering & Technical Studies for Conveyance & Recharge
Facilities to Support Environmental Planning Phase of Program

Engineering and Operations Committee

Item 7-3

June 7, 2021

Current Action

- Authorize an agreement with Black & Veatch Corporation, Inc., in an amount not to exceed \$8 million, for engineering and technical studies to support environmental planning activities of the Regional Recycled Water Program

Summary of Work to Date



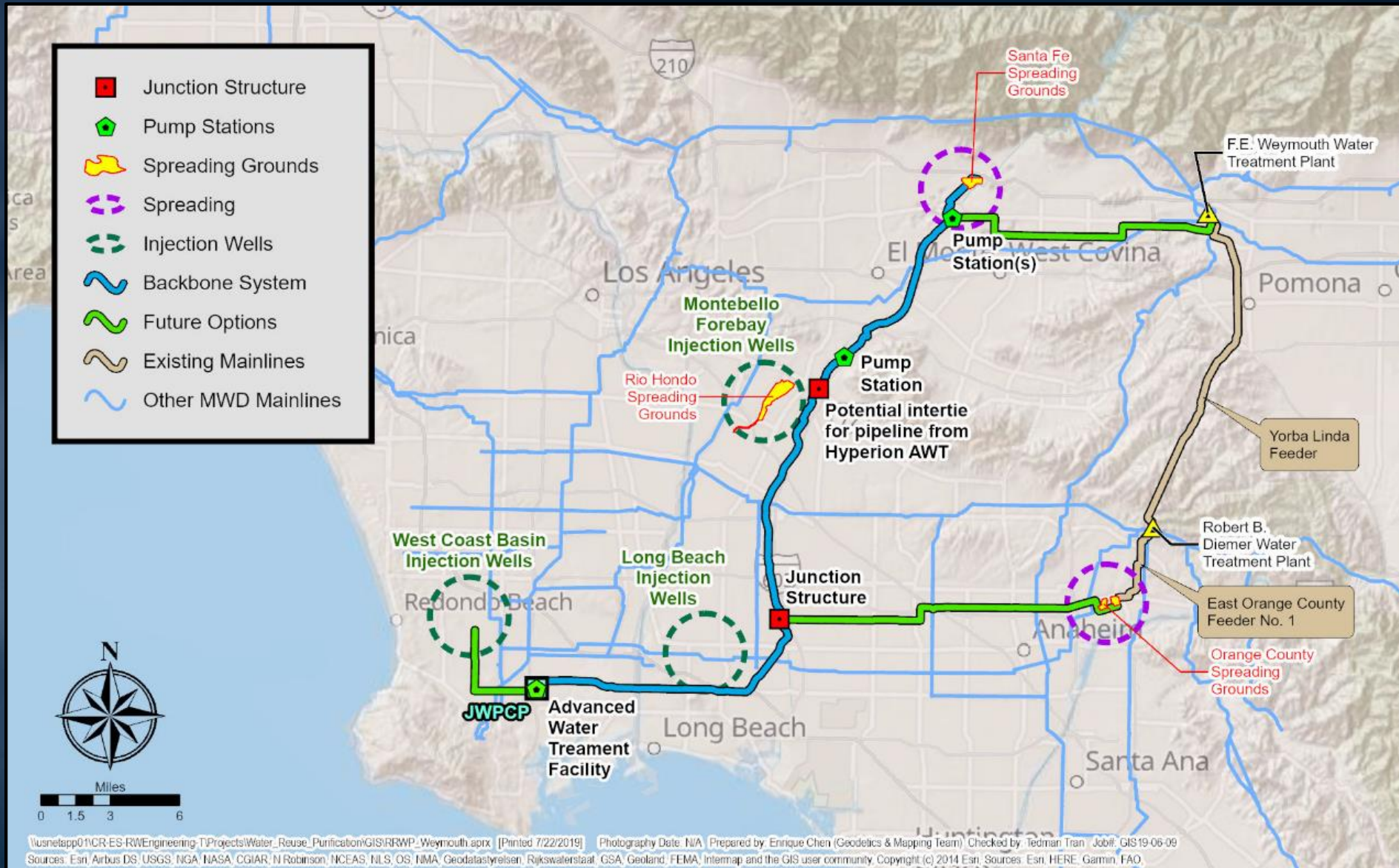
E&O Committee



Item 7-3 Slide 3

- Pilot Scale Studies (2012)
- Feasibility Study Report (2016)
- Conceptual Planning Studies Reports (2019 & 2020)
- Demonstration Plant (2019)
- White Paper #1 (2019)
- White Paper #2 (2020)

Regional Recycled Water Program



PROGRAM PARTNERS

Wastewater Partner



**LOS ANGELES COUNTY
SANITATION DISTRICTS**
Converting Waste Into Resources

Groundwater Basin Managers



Metropolitan Member Agencies



Colorado River Partners



**SOUTHERN NEVADA
WATER AUTHORITY®**



Other Key Partners



**US Army Corps
of Engineers®**



**SOUTHERN CALIFORNIA
EDISON®**
Energy for What's Ahead™



Public Works
LOS ANGELES COUNTY

RRWP Activities

● Recent Accomplishments

- Board authorized preparation of environ. documents & technical studies for RRWP (11/2020)
- Amendments & Agreements with LACSD and SNWA (Fall 2020)
- West Basin MWD Letter of Intent (5/2021)

● Current Activities

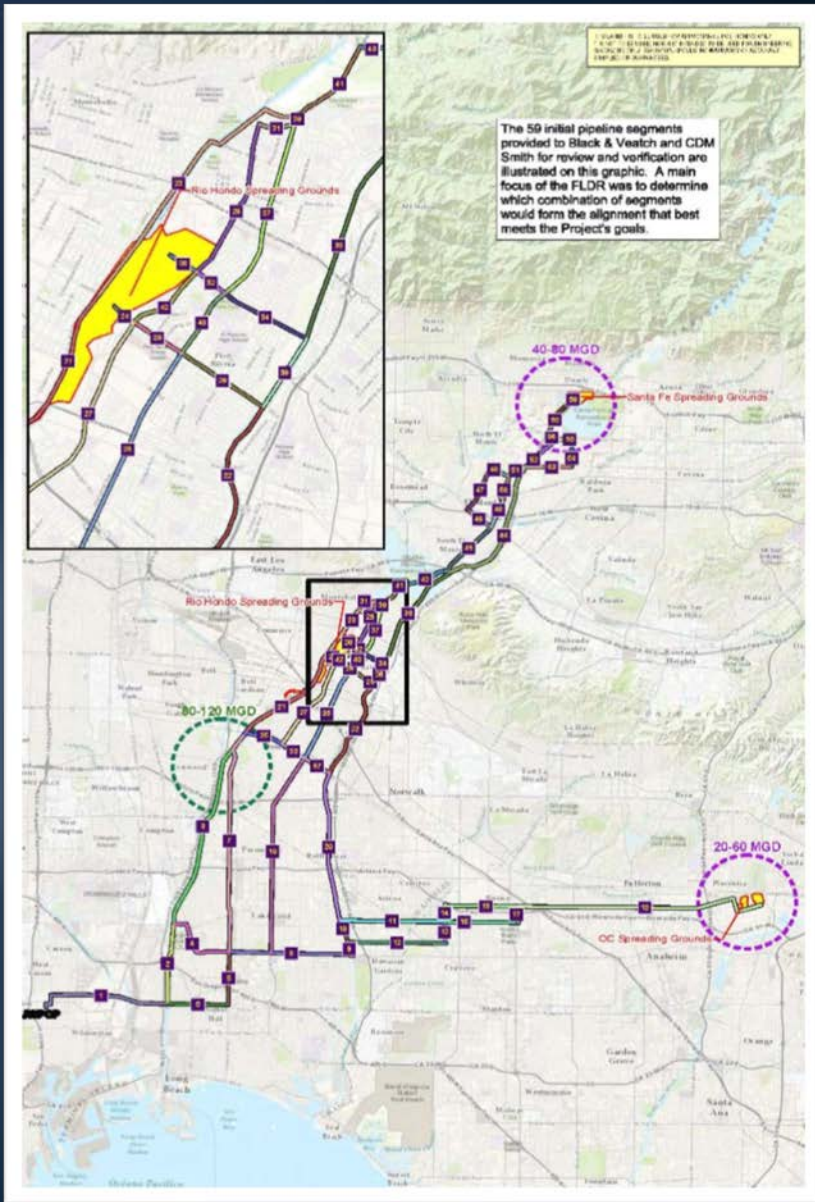
- Public outreach consultants selected for on-call services
- Consultant agreement for conveyance engineering support – this action

● Future Actions

- Authorize agreements for demo plant testing & operation, AWT engineering support & CEQA documentation consultants

Conveyance Engineering & Technical Studies

- Approx. 55-miles of new pipeline alignment
 - Up to 84-inch diameter
 - Open cut & tunneling
 - Multiple pump stations
 - Injection wells, percolation ponds, and small reservoir
- Multiple alignments being considered
- Permitting and construction in major rivers, highways & other rights of way
- Repurposing of existing MWD infrastructure



Alternatives Considered

- Alternatives for engineering & technical studies
 - All work by Metropolitan staff
 - All work by Consultant
 - Hybrid staffing approach (selected option)
- Metropolitan's role
 - Project management, technical oversight, survey, ROW coordination & activities that support staff's core competencies
- Consultant's role
 - Supplement Metropolitan's staffing
 - Provide specialized technical expertise

New Agreement – Black & Veatch Corporation, Inc.

- Competitively selected under RFP No. 1263
- Scope of Work
 - Support environmental planning and CEQA findings
 - Hydraulic analyses, geotechnical & utility investigation
 - Identify and recommend preferred alignment
 - Develop conceptual drawings and cost estimates
 - Prepare Conceptual Facilities Plan
- SBE/DVBE participation level – 25%
- NTE amount – \$8 million

PROGRAM SCHEDULE



Board Approval
of Next Steps

COMPLETED



Environmental
Planning

IN PROGRESS



Design and
Construction

FUTURE



Start-up and
Operations

FUTURE

Board Options

- Option #1
 - Authorize an agreement with Black & Veatch Corporation, Inc., in an amount not to exceed \$8 million for engineering and technical studies to support the environmental planning activities of the Regional Recycled Water Program
- Option #2
 - Do not proceed with the new agreement at this time

Staff Recommendation

- Option #1

