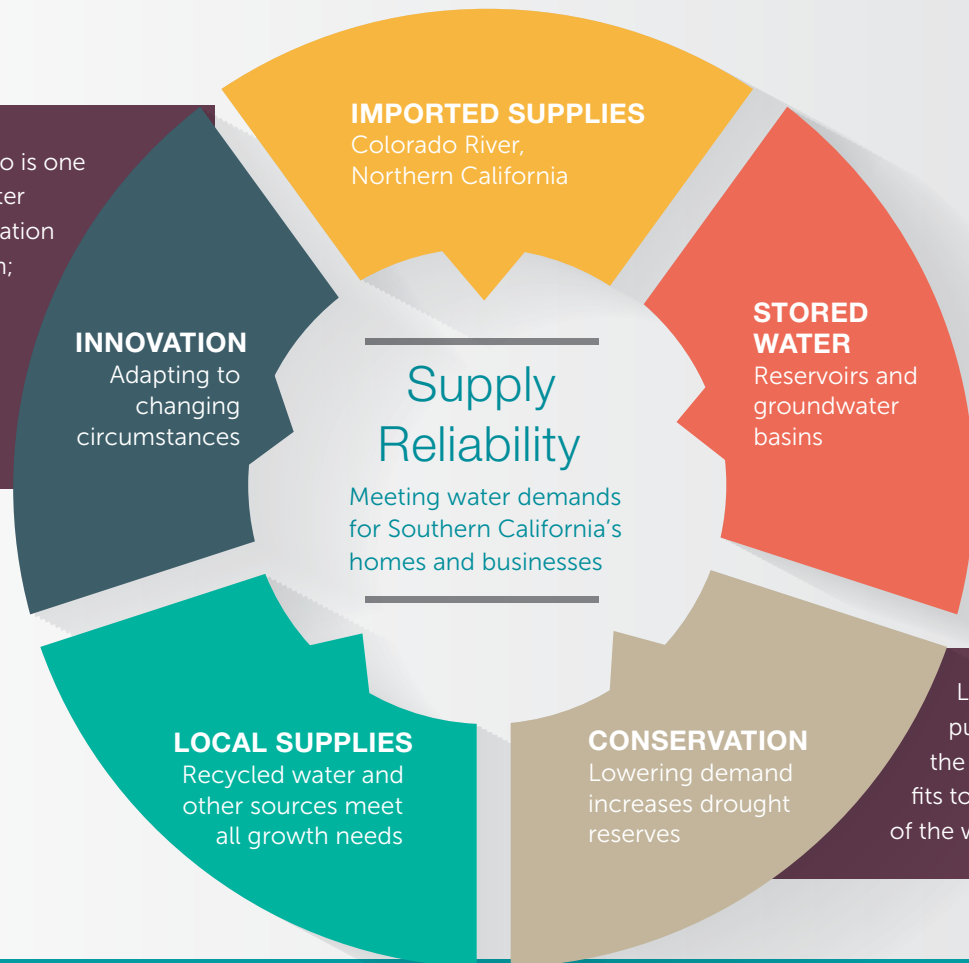




Southern California’s water resource portfolio: An “All of the Above” strategy for reliability

The Metropolitan Water District of Southern California and its 26 member agencies are committed to meeting the region’s water supply needs through a strategy that calls for maintaining and stabilizing existing resources along with developing more conservation and new local supplies. There are many water tools at our disposal - conservation, recycling, desalination, reservoir storage, groundwater replenishment, conveyance, and transfers between willing sellers and buyers.

The strongest portfolio is one that can meet the water needs of future population and economic growth; reduce the impact of natural disasters and other risks; and carry the region through future droughts.



Like pieces of a giant puzzle, a true “all of the above” approach fits together for the good of the whole state.

It all comes down to reliability and meeting demand. Different strategies come into play and interconnect. Metropolitan needs to maintain imported supplies, and when there is surplus available, store it in reservoirs and groundwater basins for future use. Conservation continues to be critical because lowering water demand increases water available for storage. Developing local supplies helps offset imported supply limitations and meet the demands of the growing population of the region. Finally, Metropolitan invests in innovation in areas like recycled water, desalination, groundwater cleanup and stormwater capture so we have one foot in the future while maintaining reliability now.



With its “All of the Above” approach Metropolitan is committed to meeting future water needs with diverse resources and programs.

Stabilize and maintain imported supplies

- Support California WaterFix to modernize the state’s main water supply system which runs through the fragile Bay-Delta
- Advance partnerships throughout the Southwest to maintain water supplies from the Colorado River during normal and dry years

Rebuild water reserves

- Refill reservoirs during wet years
- Replenish groundwater basins
- Purchase water supplies when available and cost effective

Increase local supplies

- Maintain local supplies from recycled water, groundwater cleanup and both brackish and seawater desalination
- Invest in new local water supply projects
- Pursue large-scale recycled water supply for groundwater replenishment

Make conservation a way of life

- Reduce per capita water use 20 percent by 2020
- Increase conservation through incentives, outreach, education and other programs
- Maintain focus on outdoor water use and California Friendly® landscapes

Prepare for change

- Anticipate long-term changes to climate, demographics, economy, water quality and regulations
- Encourage and facilitate innovation in recycled water, desalination, stormwater capture and groundwater cleanup

WHO IS METROPOLITAN

The Metropolitan Water District of Southern California is the Southland’s water provider for a six-county region with a population of nearly 19 million. From the engineered gravity-flow of the Colorado River Aqueduct, to sustainable water recycling and groundwater replenishment, to today’s investments in innovation – Metropolitan thinks ahead.

OUR MISSION

The mission of the Metropolitan Water District of Southern California is to provide its service area with adequate and reliable supplies of high-quality water to meet present and future needs in an environmentally and economically responsible way.

BE INFORMED, BE INVOLVED

mwdwatertomorrow.com

@mwdh2o



REQUEST A SPEAKER
FOR YOUR GROUP
shines@mwdh2o.com

