



WATER TOMORROW 2020 Integrated Resources Plan

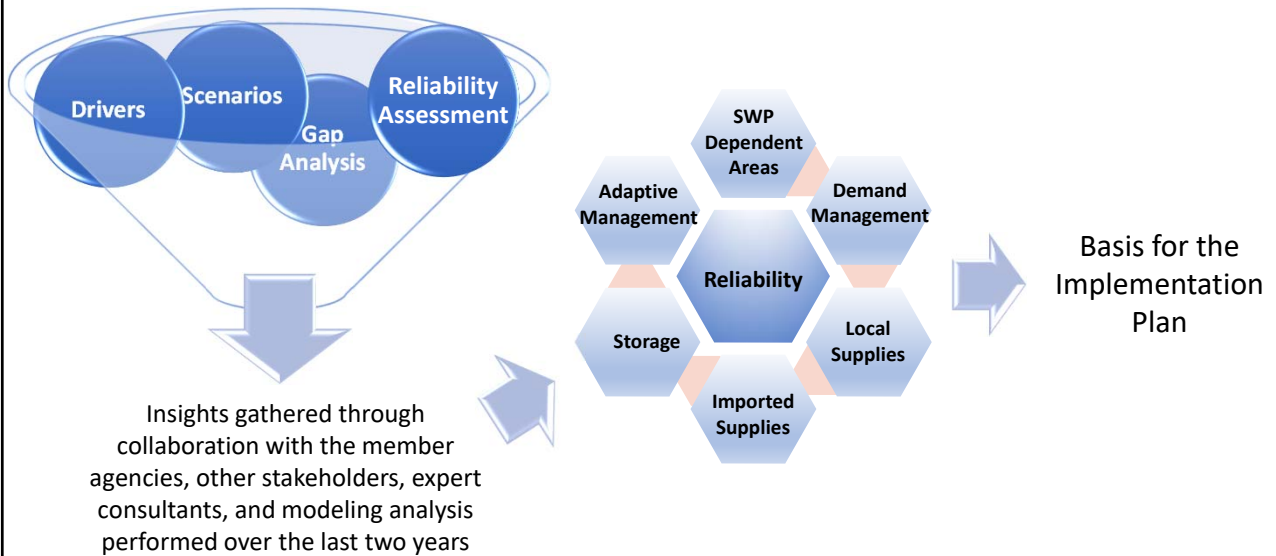
IRP Phase 1 - Findings

Member Agency Managers Meeting

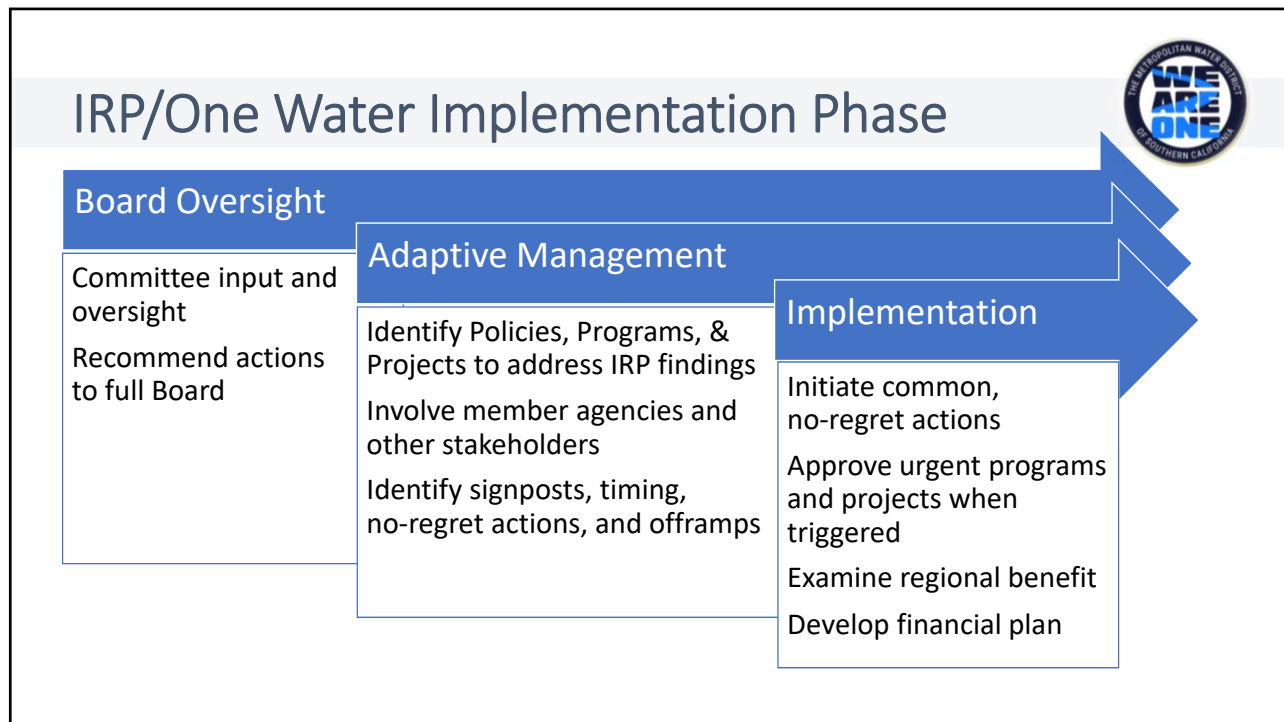
December 3, 2021

1

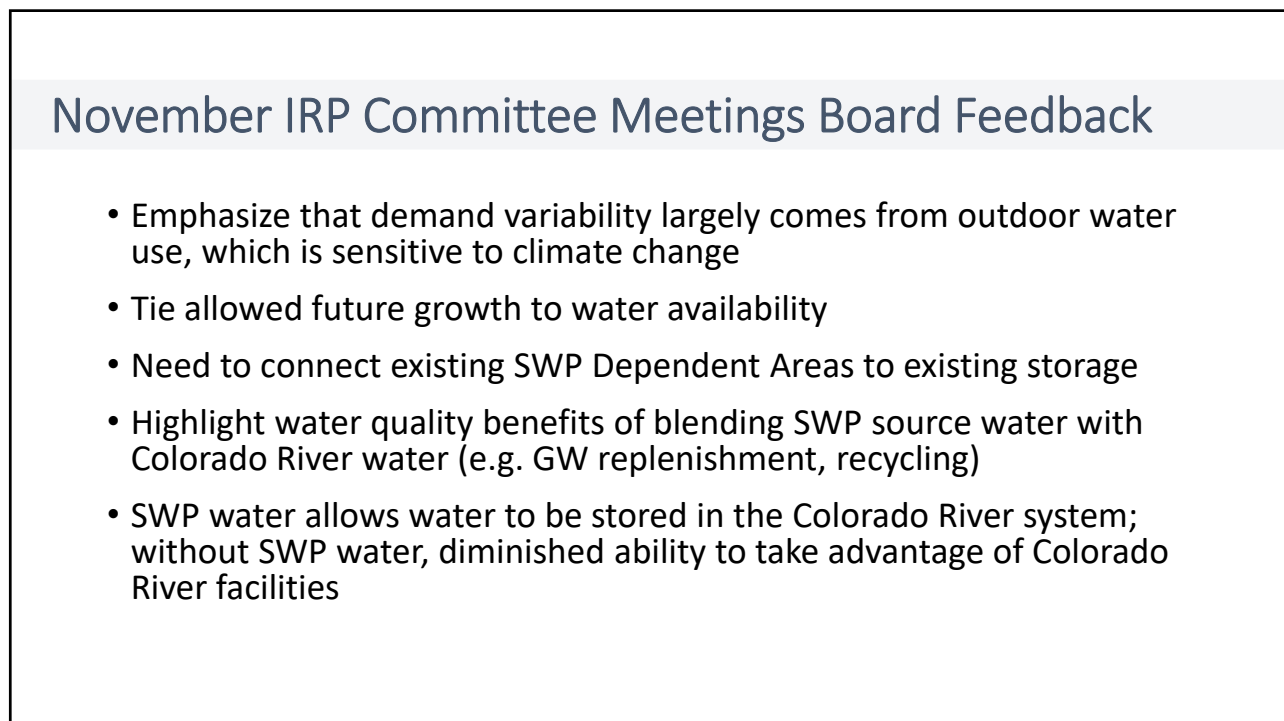
Phase 1 work of the IRP culminated in a set of Findings



2



3



4

Discussion on Comments Received from Member Agencies

RELIABILITY

- **Intent**: Add subtext to the “100% Reliability Goal”
 - To the extent possible we want to develop plans and actions to avoid mandatory cutbacks.
- **Feedback**: “Phase actions”
 - Agree. The Implementation Phase will consist of an Adaptive Management Plan that will develop signposts consistent with the concept of phasing in actions.

5

Discussion on Comments Received from Member Agencies

SWP DEPENDENT AREAS

- **Feedback**: Prioritize addressing the SWP Dependent area reliability challenges
 - Agree
- **Feedback**: Add: “Conveyance and distribution investments can increase SWP Dependent area access to existing core supplies and storage”
 - Clarify that this speaks to MWD system flexibility. “Conveyance” is a term associated with the Delta Conveyance project when use in conjunction with SWP supplies.

6

Discussion on Comments Received from Member Agencies

STORAGE

- **Intent:** The analysis shows that existing and/or new storage capacity helps reduce new core supply development need
 - **Feedback:** Add: "...including policies/programs promoting MWD's 'extraordinary' use of local storage during drought"
 - Clarify intent, as this is not a finding that was substantiated by the analysis
 - **Feedback:** Use term "investment portfolio" vs. "storage portfolio"
 - Suggest keeping the term "storage portfolio" in the context of the storage findings. "Investment portfolio" is a term generally used for financial investments.

7

Discussion on Comments Received from Member Agencies

DEMAND MANAGEMENT

- **Feedback:** Acknowledge that reliability changes when demands increase or decrease
 - Agree

8

Discussion on Comments Received from Member Agencies

IMPORTED SUPPLIES

- Intent:
 - The analysis shows that losing existing imported supplies reduces reliability and increases the need to develop replacement supplies
 - Imported supply investments leverage storage investments and successful implementation of local supply projects
 - Surplus supplies from high SWP allocation years provides water for storage
- Feedback: Delete “Primarily the SWP”
 - The suggested edit would diminish the intent of an important finding
- Feedback: Better understand the relationship between local supply and imported supply
 - Agree. The Implementation Phase will explore this relationship to guide the selection of effective actions.

9

Discussion on Comments Received from Member Agencies

LOCAL SUPPLY

- Intent:
 - The analysis shows that losing existing local supplies increases demands on Metropolitan and decreases reliability
 - Lower future supply development increases demands on Metropolitan and decreases reliability
- Feedback: Acknowledge that reliability changes when local supplies increase or decrease
 - Agree

10

Discussion on Comments Received from Member Agencies

ADAPTIVE MANAGEMENT

- Intent:
 - Show the need for an Adaptive Management Plan that consists of signposts that provide information on the direction of key drivers
 - Regular monitoring and reporting of signpost would inform the selection and timing of actions
 - Identify general signpost associated with the key drivers
- Feedback: Identification of specific signposts
 - Agree. The Implementation Phase should develop detailed signposts to capture the areas of uncertainties

11

Next Steps

- Return to Committee with IRP Findings and Board Report for adoption
- Seek Board approval of IRP Findings

12

