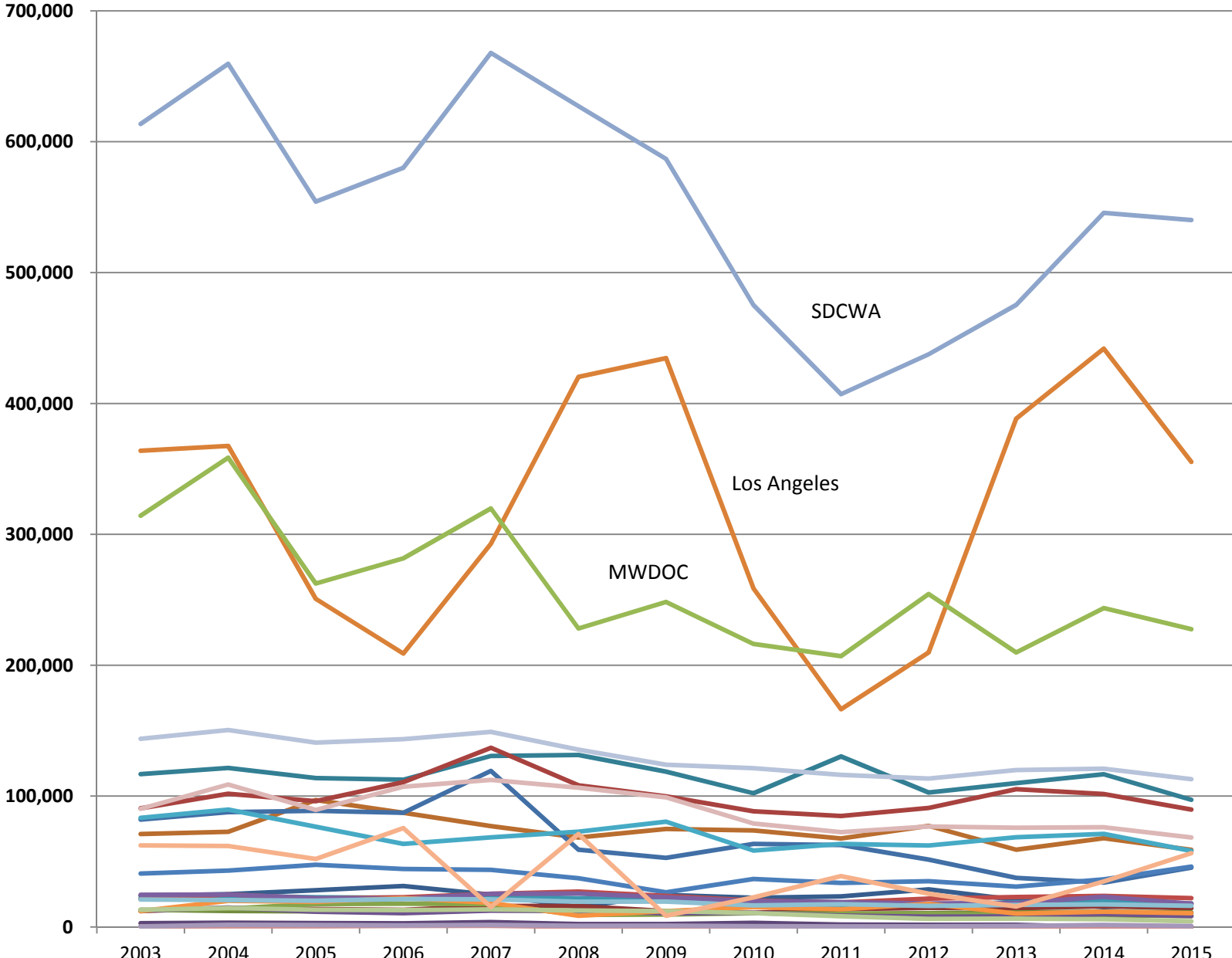


MWD FY As Billed Sales – With Exchange

Acre-Feet

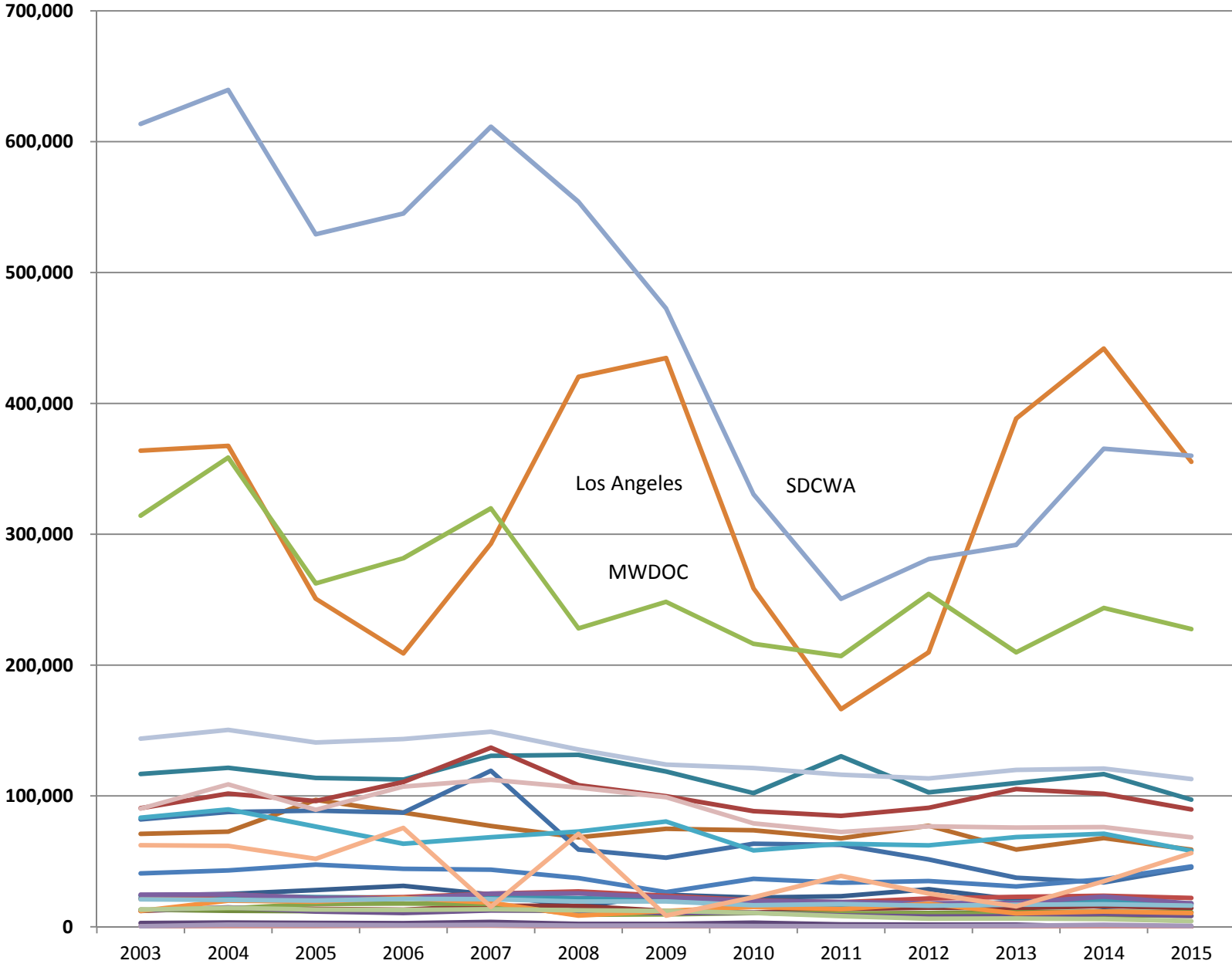


- Anaheim
- Burbank
- Beverly Hills
- Compton
- Calleguas
- Inland Empire
- Central Basin
- Eastern Municipal
- Fullerton
- Foothill
- Glendale
- Los Angeles
- Long Beach
- Las Virgenes
- Municipal WD of OC
- Pasadena
- Three Valleys
- Santa Ana
- San Diego
- San Fernando
- Santa Monica
- San Marino
- Torrance
- Upper San Gabriel
- West Basin
- Western

Fiscal Year

MWD FY As Billed Sales – Without Exchange

Acre-Feet



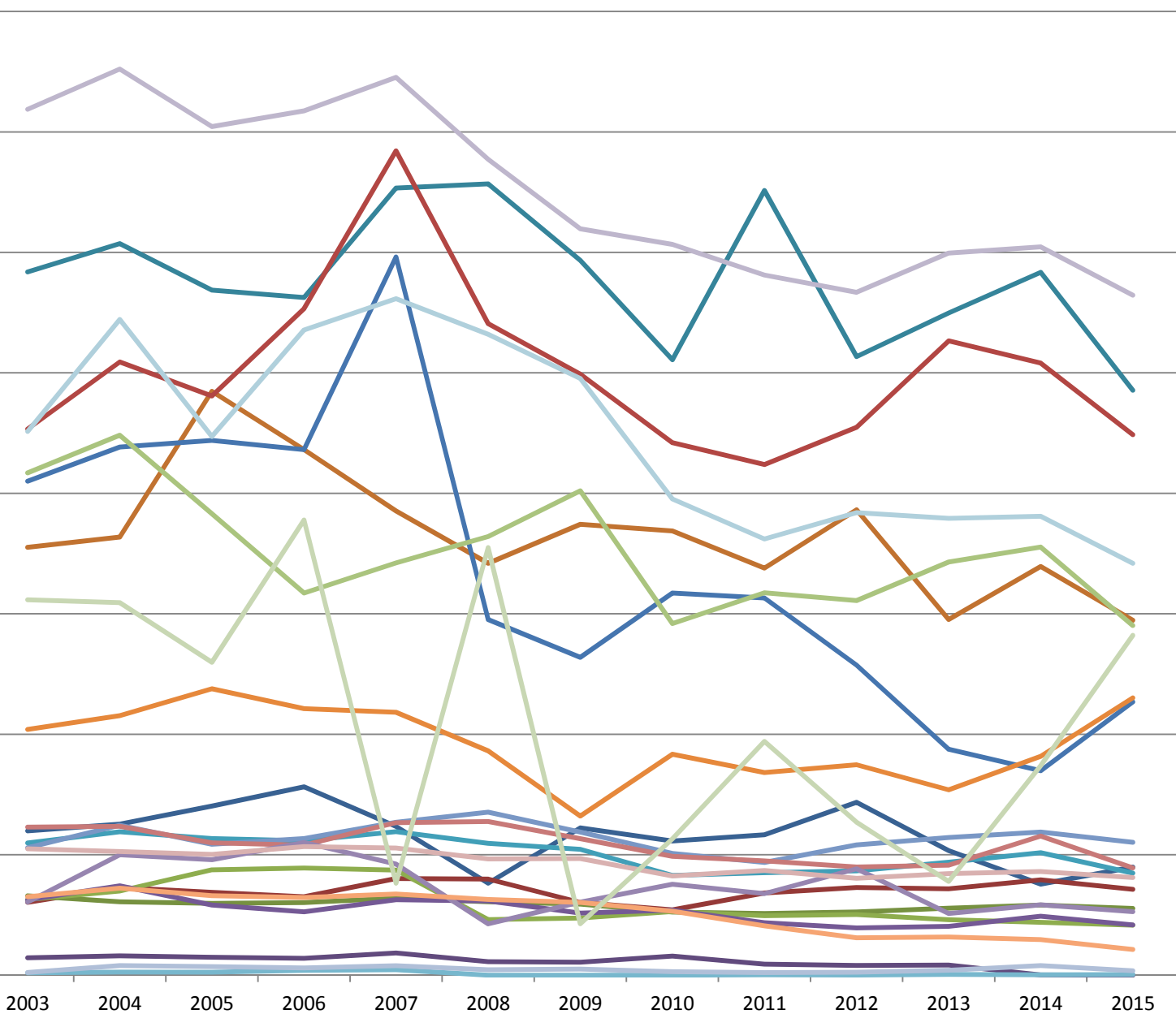
- Anaheim
- Burbank
- Beverly Hills
- Compton
- Calleguas
- Inland Empire
- Central Basin
- Eastern Municipal
- Fullerton
- Foothill
- Glendale
- Los Angeles
- Long Beach
- Las Virgenes
- Municipal WD of OC
- Pasadena
- Three Valleys
- Santa Ana
- San Diego
- San Fernando
- Santa Monica
- San Marino
- Torrance
- Upper San Gabriel
- West Basin
- Western

Fiscal Year

MWD FY As Billed Sales – With or Without Exchange Minus SDCWA, LADWP, MWDOC

Acre-Feet

160,000
140,000
120,000
100,000
80,000
60,000
40,000
20,000
0

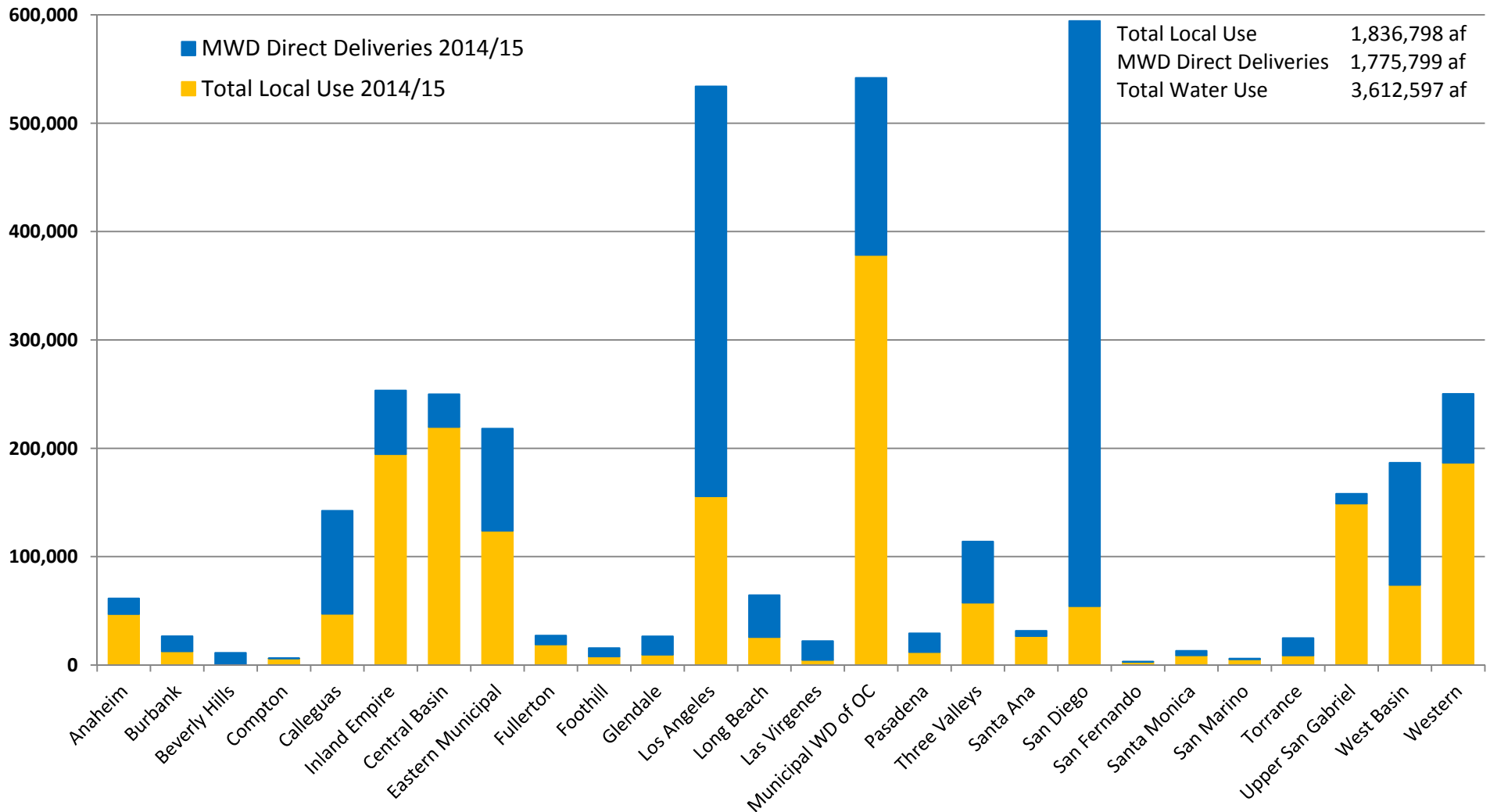


Fiscal Year

- Anaheim
- Burbank
- Beverly Hills
- Compton
- Calleguas
- Inland Empire
- Central Basin
- Eastern Municipal
- Fullerton
- Foothill
- Glendale
- Long Beach
- Las Virgenes
- Pasadena
- Three Valleys
- Santa Ana
- San Fernando
- Santa Monica
- San Marino
- Torrance
- Upper San Gabriel
- West Basin
- Western

Volume Water Use By MWD's Member Agencies Local Production plus MWD Deliveries

Acre-Feet



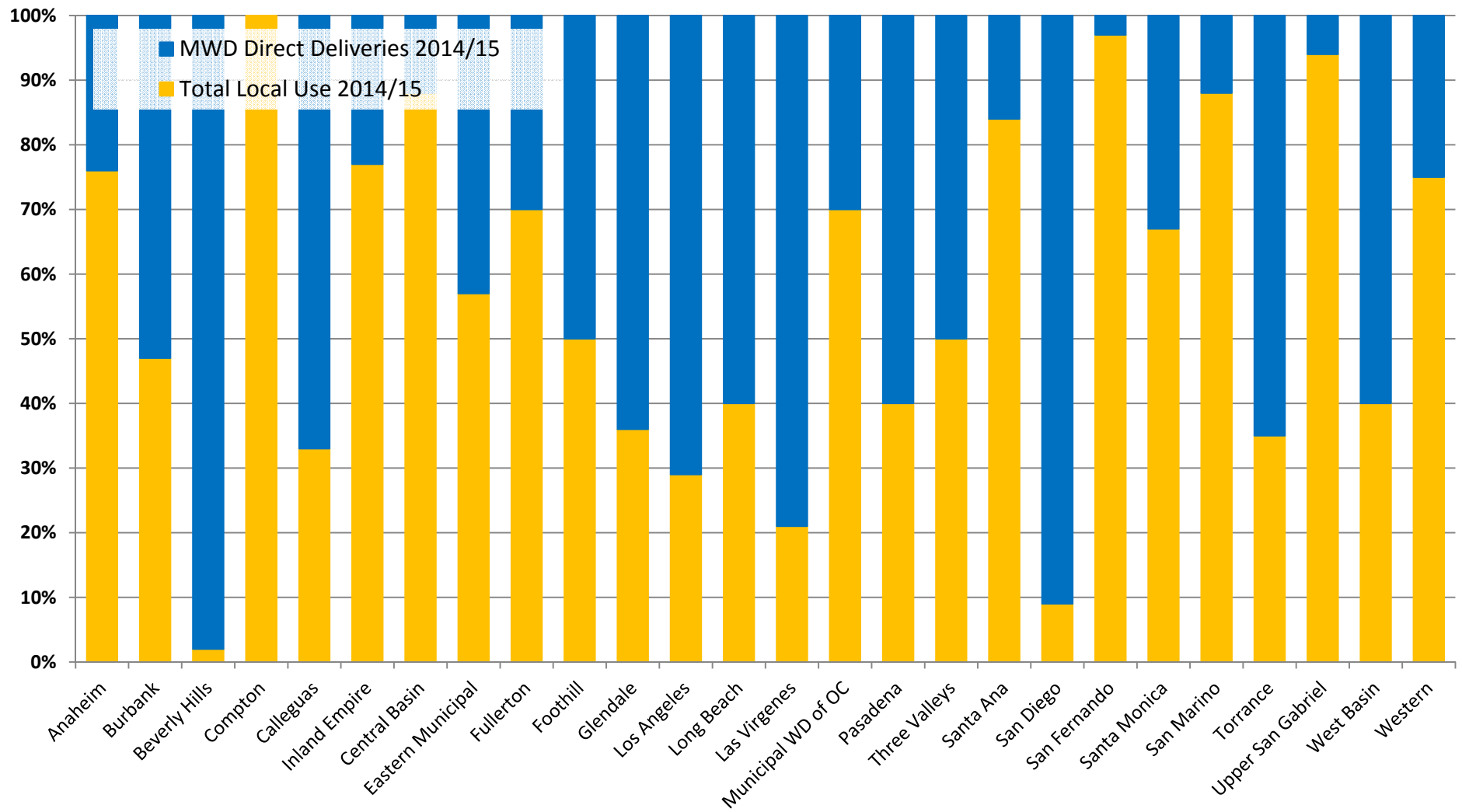
Local Production = groundwater, surface water, recycled wastewater, LA Aqueduct supplies and any use of MWD's replenishment deliveries
 Total Local Use includes net imports from other member or non-MWD agencies, not including water used for environmental purposes
 MWD Direct Deliveries include SDCWA/MWD Exchange

Source: MWD 2015 Annual Report, pp.15-16, Table 1-4

Percent Water Use By MWD's Member Agencies

Local Production plus MWD Deliveries

MWD Direct Deliveries
as % of Total Use = 49%



Local Production = groundwater, surface water, recycled wastewater, LA Aqueduct supplies and any use of MWD's replenishment deliveries
 Total Local Use includes net imports from other member or non-MWD agencies, not including water used for environmental purposes
 MWD Direct Deliveries include SDCWA/MWD Exchange