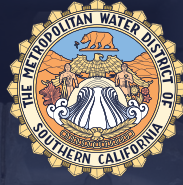




LOS ANGELES COUNTY
SANITATION DISTRICTS
Converting Waste Into Resources



Supporting local, sustainable resources and the economy —

The Benefits of the Regional Recycled Water Program

A Pioneering Project

The Regional Recycled Water Program is a partnership between The Metropolitan Water District of Southern California and the Los Angeles County Sanitation Districts. The program would create a new water supply to help meet the region's needs by providing up to 150 million gallons of water daily or 168,000 acre-feet-year, enough for 1.5 million people. The water could replenish groundwater basins, be used by industries, and potentially be integrated into Metropolitan's existing drinking water treatment and delivery system.

1. Water Supply Benefits: A New Source of Water for Southern California

- **Provides a drought-proof supply of water.** The program would purify water used from homes, businesses and industries to create a new water supply for the region that is readily available, rain or shine.
- **Replenishes groundwater basins.** Groundwater basins in the region provide 30% of Southern California's water supply and have seen levels drop to historic lows in recent years. The program would produce a high quality water to refill these basins.
- **Creates a local supply of water.** New water resources could save imported water supplies from the Colorado River and Sierra Nevada for other uses.
- **Increases water resiliency.** The program would diversify water supplies and ensure reliability especially due to climate change. It also would prepare the region in case of an earthquake or other emergency that could disrupt these supplies.



About Metropolitan

The Metropolitan Water District of Southern California is a state-established cooperative of 26 member agencies – cities and public water agencies – that serve 19 million people in six counties. Metropolitan imports water from the Colorado River and Northern California to supplement local supplies and helps its members develop increased water conservation, recycling, storage and other resource management programs.

About LACSD

The Sanitation Districts are a regional public agency that serves the wastewater and solid waste management needs of 5.6 million people in 78 cities and unincorporated areas of Los Angeles County. The agency protects public health and the environment and, in so doing, converts waste into resources like recycled water, green energy and recycled materials.

BE INFORMED,
BE INVOLVED

www.mwdh2o.com



@mwdh2o

2. Environmental Benefits: A Sustainable Water Environment

- **Reuses the largest untapped source of wastewater in the region.** The program would recycle cleaned wastewater that currently flows to the ocean.
- **Enhances water quality.** A state-of-the-art purification process would produce high quality water that is routinely monitored and tested.
- **Advances water reuse.** The program involves cutting-edge research and development of forward-looking partnerships to increase recycled water use and water reliability throughout the southwest.

3. Economic Benefits: A Thriving Economy for the Region

- **Fuels economic growth.** The program would stimulate billions of dollars in economic output during construction and operation, further invigorating Southern California's economy.
- **Generates jobs.** The program could provide nearly 50,000 jobs for the region in industries ranging from construction to retail.
- **Cost-Effective.** The estimated cost to produce water under the program is similar or less than that of other local water supplies.



Construction Generates:



**\$8.68 billion in
total economic output**

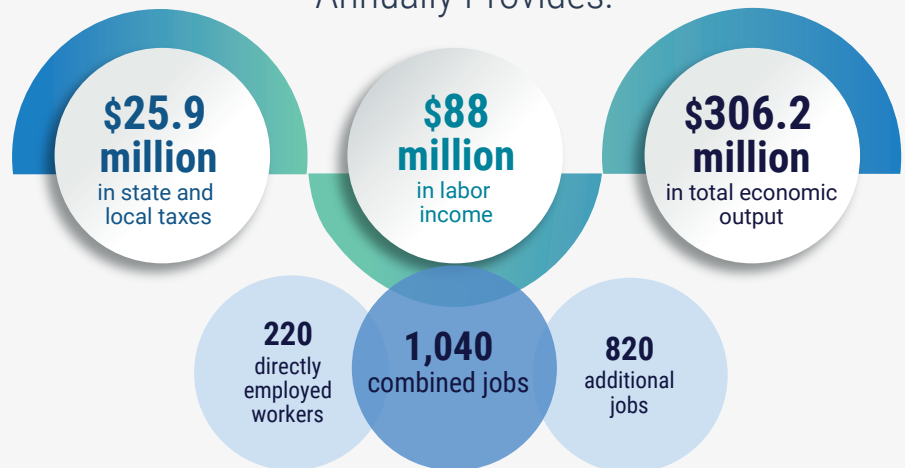


**\$3.46 billion in
labor income**



**Approximately \$402 million
in state and local taxes**

Operations & Maintenance Annually Provides:



Data is from the August 2021 report, Metropolitan Water District: Regional Recycled Water Program - An Economic Impact Study prepared by the Institute for Applied Economics of the Los Angeles County Economic Development Corporation