



# General Manager's Monthly Report



**Activities for the Month of February 2023**



# Table of Contents

Message from the GM	3
Strategic Priorities Update	4-5
Executive Summary	6-7
Upcoming Board Items	8
Reflections	9
Water Resources and Engineering	
Water Resource Management	10-13
Bay-Delta	14-15
Colorado River	16
Engineering	17-23
Operations	
Water System Operations	24-51
Information Technology	52
Real Property	53-56
Security	57-58
Finance and Administration	
Finance	59-60
Administrative Services	61
Human Resources	62-66
Diversity, Equity and Inclusion	67
External Affairs	68-73
Sustainability, Resiliency and Innovation	74-81

# Message from the General Manager

Thank you for your time and contributions to making our recent Board retreat such a success. I deeply appreciate and value the discussion among everyone who participated. This was the second retreat during my tenure as GM, and I'm confident that these retreats bring our Board closer together and help facilitate greater understanding among directors.

One takeaway from the retreat was a strong desire to make climate adaptation central to our water resource and financial planning.

The series of intense storms that hit California this winter show why our directors are on the right track.

After the three driest years our state has ever seen, now depleted reservoirs are starting to recover from record lows, and the Department of Water Resources announced a modest increase in its forecasted water deliveries.

I am hopeful that the snowpack and eventual runoff will allow further increases in State Water Project allocations, but we must keep in mind that extremely variable weather has complicated traditional water resource management.

Southern California's water challenges cannot be tackled season-to-season. No single series of storms alone can ready us for the next drought cycle or the impacts of a rapidly changing climate.

Meanwhile, conditions in California's groundwater basins remain stressed, and, after more than two decades of drought in the Colorado River basin, additional reductions in that supply could begin as soon as next year.

We must continue investing in local supplies, such as water recycling and stormwater capture, and we must improve our distribution system to ensure water can reach everyone equitably.

To replenish local storage and reduce reliance on imported supplies, we must continue to encourage Southern Californians to conserve, use water as efficiently as possible and transition to more sustainable, California friendly landscapes.

Recent storms must not distract us from the work that the Board retreat began to envision: to adapt to the changing climate and achieve a more resilient future.

We are one,

Adel



**“You can do what you have to do, and sometimes you can do it even better than you think you can.”**

**- President Jimmy Carter**



# Strategic Priorities Update

The General Manager's Strategic Priorities guide actions in key areas of focus, investment, and transformation for Metropolitan.

## Empower the workforce and promote diversity, equity, and inclusion

Build a safe, inclusive, and accountable workplace where all employees feel valued, respected, and able to meaningfully contribute to decisions about their work.

Organizational Development & Training (OD&T) developed and hosted a three-part training program on "Avoiding Burnout & Managing Stress." Upcoming sessions include "Developing Positive Mindset" and "Focusing on Wellness."

Prepare and support the workforce by expanding training and skill development and updating strategies to recruit and retain diverse talent at a time when Metropolitan's needs are evolving and employee expectations about the workplace are changing.

OD&T is working on the development of a resources and training guide to help managers have more focused career development conversations with team members during this year's MyPerformance cycle.

## Sustain Metropolitan's mission with a strengthened business model

Conduct a careful, deliberative and inclusive review of the rate structure to ensure the business model can adapt to changing needs of the member agencies and support sustainable local and imported supplies.

The Board Retreat was well attended and substantive, with emphasis on the impacts of climate change on water resources and ways to improve understanding among directors and member agencies. Follow-up discussion toward a proposed Climate Adaptation Master Plan for Water has begun at the LRPPBM subcommittee.

Manage rate pressure on member agencies through attention to programmatic costs, organizational efficiencies and efforts to secure external funding for projects with broad and multi-purpose benefits.

Aligned with our Climate Action Plan, we issued a [Request for Statements of Interest](#) to solicit concept ideas for developing renewable energy and storage projects on Metropolitan properties. Submissions are due April 11.

To better position Metropolitan to access large-scale water recycling funding in the recently passed federal Infrastructure Bill, we are applying for a USBR WaterSMART grant to conduct a required feasibility study.

## Adapt to changing climate and water resources

Provide each member agency access to an equivalent level of water supply reliability through necessary adaptive implementation of the IRP findings.

Staff is bringing forward board action to unify the district under the same conservation requirements by ending the Emergency Water Conservation Program for SWP-dependent areas. State-imposed conservation requirements include demand response actions from Level 2 (20 percent reduction) of the Water Shortage Contingency Plan.

In March staff will present to the Board an update on the drought mitigation portfolio for the SWP-dependent areas.

Advance the long-term reliability and resilience of the region's water sources through a One Water approach that recognizes the interconnected nature of imported and local supplies, meets both community and ecosystem needs, and adapts to a changing climate.

The SRI team facilitated a GM Listening Session with environmental leaders to discuss development of the Sustainability Strategy. The team sent a follow-up survey and is also seeking input from the newly formed SRI Council.

On Pure Water, initial pipeline preliminary design procurement is progressing, two consultants have been selected, and a March 2023 board action is planned to authorize professional services agreements. The NOP and scoping meetings are complete, but because of increasing the phase 1 capacity from 100 mgd to 115 mgd (for DPR) and other adjustments between project and program level analysis, the CEQA approval milestone has moved from March 2023 to September 2023. We believe this change should not affect the construction schedule.

The Chino Groundwater Basin Sustainability Tour hosted by the Chino Basin Water Conservation District included the Montclair Basins Improvement Project, a project funded by Metropolitan's stormwater recharge pilot program.

Accelerate Resilience LA shared with staff the preliminary results of its study of stormwater capture strategies, focused on potential in the Lower San Gabriel, Lower Los Angeles River, and Malibu Creek watersheds.

The public comment period on the U.S. Army Corps of Engineers (USACE) Draft Environmental Impact Statement for the Delta Conveyance Project closes on March 16, 2023.

Staff submitted a concept proposal to the Delta Conservancy's Wetland Restoration Grant Program for a \$20M, three-year project for Webb Tract to use managed flooded wetlands and rice fields to address subsidence, reduce emissions, provide environmental benefits, and potentially generate income through carbon credits and leases. The proposal has advanced in the grant process, and the Conservancy Board is expected to consider it in summer or fall of 2023.

## Protect public health, the regional economy, and Metropolitan's assets

Proactively identify, assess, and reduce potential vulnerabilities to Metropolitan's system, operations, and infrastructure.

In light of recent incidents across the country where electrical structures have been targeted, staff has increased its focus on identifying, assessing, and mitigating physical threats to the electrical components along the Colorado River Aqueduct system.

Staff is finalizing negotiations for a Cyber Security Operations Center services vendor, with a contract expected to come to the Board in April.

Project closure activities are underway for the recently completed Datacenter Modernization and Relocation Project.

Apply innovation, technology, and sustainable practices across project lifecycles (design, construction, operations, maintenance, and replacement).

After a semester of access to and information from Metropolitan staff and engineers, UCLA students presented an innovative concept to install solar panels along our canals to reduce evaporation loss, generate power, and potentially generate hydrogen for a zero-emission fleet. Staff is considering this among other potential solar-over-water pilots and related state and federal funding opportunities.

Contracting Services is developing an Operating Policy for Sustainable Procurement and this month participated in the SRI Council and the Zero Emission Vehicle (ZEV) task force, including establishment of a ZEV First executive directive to support the transition to a greener fleet.

## Partner with interested parties and the communities we serve

Grow and deepen collaboration and relationships among member agencies, interested parties, and leaders on the issues most important to them and toward mutual and/or regional benefits.

Staff is finalizing recommendations to enhance the Community Partnering Program and revise criteria to align more directly with SRI. Staff is also completing a separate review of public engagement strategies used by other large regional agencies.

Reach underserved communities and non-traditional interested parties to better understand their needs and ensure their inclusion in decision making.

Metropolitan and Caltrans co-sponsored an event to promote small business inclusion in government contracting and to consider how such programs can help close the income inequality gap.

# Executive Summary

*This executive summary is added to this report to provide a high-level snapshot of a key accomplishment from each area of the organization. Detailed information is reported in the pages following this summary.*

## **Administrative Services**

One of Investment Recovery's core responsibilities is to collect electronic waste from all facilities across the district, as well as to weigh, document, and report yearly collections with the California Department of Toxic Substances Control. It is important to collect e-waste because it keeps electronics out of landfills, which can contaminate the soil and waterways. Collecting e-waste also gives the equipment the opportunity to be reused or repurposed, which decreases the demand for new materials, helping to conserve natural resources. Metropolitan and the team at Investment Recovery are doing their part of environmental stewardship by inspecting electronic waste as it comes in and determining whether the equipment can be sold via auction or scrapped via e-waste. In 2022, Investment Recovery collected 31,500 lbs. of electronic waste and disposed of it via e-waste collection companies.

## **Bay-Delta Initiatives**

Staff worked with researchers from UC Davis to initiate the second deployment of the Delta Smelt Pilot Propagation Study on Bouldin Island to evaluate whether the impoundments on Metropolitan islands can be leveraged to conduct Delta Smelt Supplementation Research. The first deployment from November 21, 2022, to January 5, 2023, was successful, and the second deployment is to repeat and verify the results and test conditions during the warmer period of March 2023.

## **Chief Financial Officer**

Initiated an internal update of Metropolitan's Appendix A document for a bond financing anticipated in the late Spring 2023.

## **Colorado River**

Metropolitan has been conducting a number of outreach campaigns to educate outside entities of the potential risks to Metropolitan's Colorado River supplies by a modelling proposal from the other Colorado River Basin States. Despite the current differences, Metropolitan continued to work with the other Basin States to develop a consensus alternative to be included in the Final Supplemental Environmental Impact Statement.

## **Diversity, Equity & Inclusion**

The Diversity, Equity & Inclusion team continues to build connections and trust in the communities in which we serve and advance the GM's strategic priorities. During the month of February, members of the team met with the Soboba Tribe and initiated conversations regarding apprenticeship programs and creating diverse talent pipelines from the reservations into opportunities at Metropolitan. We hosted two big events for our small and diverse business community, MetWorks, which was held in Carson, and Dream Big, which was hosted at Metropolitan Headquarters. Both events helped break down barriers for our contracting opportunities and helped establish Metropolitan as an agency of choice for the small and diverse business community.

## **Engineering Services**

On February 2, Business Outreach and Engineering Services held the first in-person MetWorks Industry Day event at the Carson Community Center. Directors Dennis Erdman and Heather Repenning and General Manager Adel Hagekhalil welcomed over 360 of Metropolitan's business partners to the event. Engineering staff provided updates on the Pure Water Southern California Program, Metropolitan's initial alternative project delivery projects, and contracts that will be out to bid soon. The event provided opportunities for small business to meet prime contractors and for engineering staff to actively partner with the communities we serve.



## External Affairs

Bureau of Reclamation Commissioner Touton and Deputy Commissioner Palumbo met with directors and staff at the board retreat to talk about the cooperation and action needed to address the many challenges facing the West. (February 13)

## Human Resources

HR Benefits and HRIS are working together to create and issue the 2022 calendar year 1095-C employee statements as required by the IRS to meet the requirements of the Affordable Care Act (ACA). A memo to all employees explaining the reason and requirements for the statements and encouraging employees to go green by opting in to receive their statements electronically was emailed to all employees in February.

## Information Technology

IT successfully created a new GIS mobile application for Environmental Services to spatially organize current and past projects, as well as to store documents. All users who have access to the web application can view the project site and related information at any time. This provides a cleaner interface for the customer to view the project location on a map and all related documents.

## Real Property

The Diamond Valley Lake Marina opened the Wildflower Trail for visitors to enjoy a walk on the 1.3-mile trail loop. Although the full bloom has not arrived, staff expects this year's bloom to be bigger than the blooms in recent years.

## Security Management

Metropolitan security specialists worked with staff from the Western Region Conveyance and Distribution (C&D) Valley, Los Angeles, and La Verne teams to rapidly identify, assess, and reinforce dozens of spillway openings against potential security vulnerabilities and tampering with public drinking water substructures and pipelines.

## Sustainability, Resiliency and Innovation

The SRI Office helped prepare and present climate vulnerabilities for the Board Retreat and is working closely with others on a process to develop a Climate Adaptation Master Plan for Water. The Office also hosted a GM Listening Session for Environmental Partners on the Sustainability Strategy and facilitated the SRI Council and our second SRI Lunch and Learn, which was in partnership with WSO at La Verne. We also issued an RFSI with Real Property to solicit concepts for renewable energy and storage on Metropolitan properties and are working with WSO on ordering zero-emission vehicles and installing fleet chargers at Union Station. EPS is focused on several projects including the Draft EIR for Pure Water Southern California.

## Water Resource Management

Staff continued to track and respond to improving water supply conditions in the State Water Project watersheds. With the allocation increasing to 35 percent of Table A amounts, staff is developing options for the Board to consider modifying or ending the Water Shortage Emergency Condition and the Emergency Water Conservation Program.

## Water System Operations

The 2023 CRA shutdown was completed this month. The work focused on several capital projects and critical maintenance of the aqueduct system. Nearly 300 employees and contractors successfully coordinated to safely complete the critical work that helps keep the over-80-year-old aqueduct system delivering Colorado River supplies reliably for years to come.

# Upcoming Board Items

ANTICIPATED KEY ITEMS OF FOCUS – NOT AN EXHAUSTIVE LIST  
SCHEDULE SUBJECT TO CHANGE

<b>April</b>	<ul style="list-style-type: none"><li>• Quarterly Desert Housing update</li></ul>
<b>May</b>	<ul style="list-style-type: none"><li>• Update on Direct Potable Reuse regulations</li><li>• Review of Draft Supplemental Environmental Impact Statement for Colorado River Interim Guidelines</li><li>• Update on Climate Vulnerability and Risk Assessment</li><li>• Authorization to amend PVID following agreement and accept Inflation Reduction Act funding</li></ul>
<b>June</b>	<ul style="list-style-type: none"><li>• Award two Drought Resilience Construction Contracts on east side of system</li><li>• Authorize Agreement(s) to conduct Desalination Studies</li></ul>
<b>July</b>	<ul style="list-style-type: none"><li>• Quarterly Desert Housing update</li><li>• Approve new Colorado River implementing agreements</li><li>• General Manager’s Business Plan update</li><li>• Award 1 Drought Resilience Construction Contract on east side of system</li><li>• Emergency Management Program Update</li></ul>
<b>August</b>	<ul style="list-style-type: none"><li>• Update on Sites Reservoir Project</li><li>• Award Phase 1 Progressive Design Build services contract for Sepulveda Pump Stations project for drought resilience</li></ul>

The schedule of the following upcoming board items has not yet been determined:

<b>September - March</b>	<ul style="list-style-type: none"><li>• Long Range Finance Plan – Phase 1</li><li>• Metropolitan Storage Portfolio workshop</li><li>• Sustainability, Resiliency, and Innovation Strategic Plan workshop</li><li>• Update on Voluntary Agreements package</li><li>• Federal grants for large recycled water projects</li></ul>
------------------------------	--





Pipe Removal in Pasadena



Pipe Access Site



Pipe Segment Installation

**“An innovative and successful project takes place in the heart of Orange County.”**

***Sam Mouawad, Project Manager***

## PROGRAM DESCRIPTION

Metropolitan is replacing the inner lining of the Orange County Feeder, an important pipeline that is more than 80 years old and serves water to several cities and agencies in Los Angeles and Orange Counties. A portion of the pipeline follows Bristol Street south for approximately 11 miles through Santa Ana, Costa Mesa, and Newport Beach. The pipeline is constructed of welded steel pipe with a coal-tar enamel lining and has a diameter of 36 inches. Due to steel shortages during World War II, Metropolitan purchased used pipe from the city of Pasadena, refurbished it, and reinstalled it for this reach. Pasadena had constructed a pipeline to deliver water from Morris Dam to Pasadena, however construction of Metropolitan’s Upper Feeder rendered the pipeline obsolete.

Internal inspections of this pipe found significant deterioration of the existing coal-tar enamel lining. In November 2014, staff began design to replace the lining in three stages. The initial phase, which relined 3 miles, acted as a pilot project to confirm the production rates and construction efficiencies for complete removal of the interior lining and reapplication of a new lining. The second stage which was completed in November 2019, rehabilitated four miles. The third and final stage of the project, which is currently under construction, will reline the remaining four miles within the cities of Costa Mesa and Newport Beach.

The scope of work for the current rehabilitation contract includes removing a pipeline segment at 17 sites to create access points for machines to enter the line to remove the lining and application of mortar lining. New steel pipe segments with outlets will be installed at the sites. The work is anticipated to be completed by November 2023. The total estimated cost to reline 11 miles of the Orange County Feeder is \$46.9 million.

## MEMORABLE MOMENT

The contractor and Metropolitan staff are working as a team to complete this challenging project, which used rover machines to remove the coal tar lining and apply the mortar lining, a first for California. The most memorable moment for Resident Engineer Robert Ponce De Leon, was the successful pipeline relining under the Newport Back Bay. This work was completed under strict environmental restrictions due to the location’s importance as an ecological reserve on California coast. The rehabilitation of the Orange County Feeder will extend its life span and enhance the water delivery reliability to these communities for years to come.

# Water Resources and Engineering



## Water Resource Management

### **Ensure Reliable State Water Project (SWP).**

Staff participated in a DWR workshop on climate change considerations for the upcoming 2023 State Water Project Delivery Capability Report. DWR staff presented on the development of risk-informed climate scenarios that will be applied across all DWR programs. These reports update the estimation of the current and future conditions of State Water Project delivery capability.

### **Ensure Access to Sufficient Water Supplies to Operate a Full Colorado River Aqueduct in Times of Drought**

Staff attended meetings of the Colorado River Basin (CRB) Salinity Control Forum Work Group at the offices of Coachella Valley Water District in Palm Desert. Meeting topics included updates from federal agencies involved in the Forum's activities, the 2023 Review of Water Quality Standards for Salinity in the Colorado River System, and updates on the status of the Paradox Valley Unit (PVU). PVU is the largest single salinity control project in the CRB. The U.S. Bureau of Reclamation (USBR) recently completed a six-month test of PVU at two-thirds of its full injection capacity (approximately 65,000 tons of salt control per year). Post-test analysis showed normal pressure levels in the well and no evidence of abnormal seismicity during the test. As a result, USBR has decided to operate the well at two-thirds capacity in additional consecutive six-month tests until a long-term seismic risk analysis is completed in late 2023. The U.S. Bureau of Reclamation continues to work with the CRB states to develop a long-term alternative to replace PVU once it is no longer operable.

### **Support Capital Investment Program Planning**

Staff continues to support the Capital Investment Program (CIP) by reviewing minor capital proposals (under \$400,000) and providing feedback and/or recommendation to proceed. In addition, staff continues to support the drought projects spearheaded by Metropolitan's Engineering Group by working with the Department of Water Resources (DWR) to secure necessary agreements for the use of DWR's Devil Canyon facility in San Bernardino.

### **Manage Existing and Develop New Regional Water Management Programs to Maintain Water Supply Reliability in the Face of Increasing Water Supply Volatility.**

Metropolitan prepares an annual report on regional progress in achieving the goals of increased emphasis on cost-effective conservation, recycling, and groundwater recharge. This year's report presents the achievements during fiscal year 2021/22. Metropolitan submitted this report to the California State Legislature on January 30, 2023.

### **Implement Water Surplus and Drought Management Plan**

Staff is working on setting priorities and targets to rebuild Metropolitan's State Water Project (SWP) surface storage as DWR increased the SWP allocation to 35 percent. Staff is also working on potentially managing other SWP contractors and Metropolitan's member agencies' surplus water while protecting Metropolitan's interests.

## Implement Regional Conservation Program

Water efficiency staff continued conservation outreach activities to implement the regional conservation program. Activities included making a presentation on the turf dashboard at the California Data Collaborative quarterly meeting. The presentation included a run-through of the dashboard along with a detailed explanation of the data sources and potential uses. Staff held a Water Efficient Landscaper Dual Certification Program series for 45 landscape professionals at the Chino Basin Water Conservation District.

Staff met with representatives from the City of West Hollywood and the West Basin Municipal Water District to discuss the Water Savings Incentive program. \*West Hollywood is interested in projects that can potentially use nuisance groundwater that currently goes to sewers during dewatering for buildings under construction.

The Water Efficiency Team also held a quarterly Program Advisory Committee (PAC) meeting with the member and retail agency conservation coordinators. Discussion items included how to improve communications with underserved communities about conservation incentives, trees, and tree canopies as a runoff retention strategy, and other Conservation Credits Program concerns.

Metropolitan was a sponsor for the 61st Annual California Irrigation Institute Conference “One Water—Partnering for Solutions.” This is the only agricultural and urban water efficiency conference in the state. Staff is on the board of directors that organized the conference. Staff also moderated and presented at a session on urban landscapes. Conference speakers were from DWR, San Francisco Public Utilities Commission (SFPUC), Arvin Edison Water Storage District, Coachella Valley Water District, USBR, KB Homes, State Water Resources Control Board (SWRCB), Utah State University, and many others.

The 2022 Innovative Conservation Program (ICP) application period closed in December 2022. Proposals were reviewed and scored by a selection panel in January. The panel included staff from the Water Efficiency Team, ICP funding partner, Southern California Gas Company, and one-member agency. Grant recipients were notified of their awards in early February. Six projects were chosen and will be executed over the next two years. Recipients and their project titles include:

- Alliance for Water Efficiency—Commercial-scale Landscape Transformation Savings Study
- City of Fullerton—City of Fullerton Meter Health Analytics Pilot Project
- University of California Riverside—Establishing real-world water use and irrigation cooling benefits baselines for 18 landscape species in inland southern California
- Mimir—Simplifying Cooling Tower Management for Commercial Properties with the One Number Efficiency (ONE) Program
- Shower Stream—Big data analytics with smart shower systems in hotel buildings
- NOWi Sensors—A Cost-Effective Approach for Leak Detection and Leak Localization in Multi-Family Housing

# Water Resources and Engineering

(continued)

## **Collaborate with Member Agencies, Water Agencies and Associations, and Provide Leadership for Policy Development, Advocacy, Outreach and Education**

In February, Metropolitan sponsored CalDesal's and the Multi-State Salinity Coalition's (MSSC) conferences. CalDesal held its annual summit on February 16 and 17 in Sacramento. Staff participated in a panel discussing research in the desalination industry and presented on Metropolitan's 60-year history of studying seawater desalination. The presentation included a discussion of the latest Future Supply Actions Funding Program. Wade Crowfoot, the Secretary of California's Natural Resources Agency, gave the keynote speech. The Multi-State Salinity Coalition's annual summit was held in Las Vegas from February 22 to 24. Staff discussed industry trends and Metropolitan's long-term sustainability plans in a panel discussion on Friday morning. Metropolitan is a founding member and sits on the boards of both CalDesal and MSSC.



Staff continued implementation of the Emergency Water Conservation Program (EWCP) to address severely limited SWP system water supplies.

The affected member agencies continued to show reductions in purchases from Metropolitan compared with historical and projected levels, indicating consumer responsiveness with demand-cutting measures. Path One watering day limit compliance requirements remained at one day-per-week watering restrictions during February. Volumetric limits were updated and increased to reflect the additional SWP supplies available through the 2023 allocation. Staff is continuously monitoring and reporting water use performance to the affected member agencies to ensure that SWP water usage stays on track to remain within the available supplies.

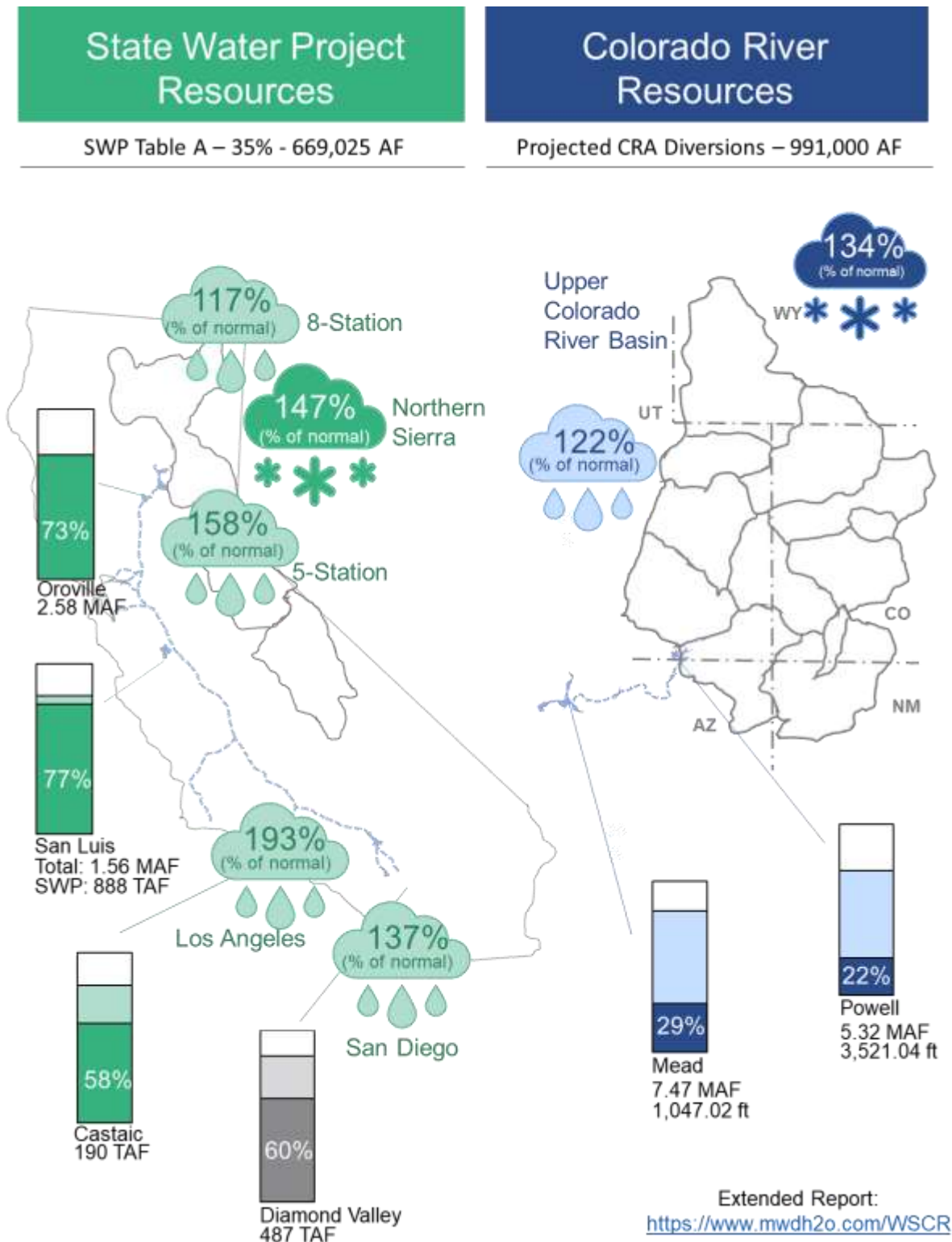
## **Implement Future Supply Actions Funding Program.**

Staff submitted a letter to the SWRCB regarding the Los Angeles Department of Water and Power's (LADWP) Mono Lake supplies. The SWRCB held a preliminary hearing to consider a request by the Mono Lake Committee for further curtailment of LADWP's water supplies from the Mono Basin. Metropolitan's letter highlighted the importance of maintaining LADWP's supplies because of the increased pressure that the supply reduction would have on Metropolitan's critically stressed imported water supplies. Metropolitan's letter was quoted in a Los Angeles Times article: <https://www.latimes.com/environment/story/2023-02-19/los-angeles-dwp-fights-to-keep-spigot-open-at-mono-lake>. Letters were also submitted by several of Metropolitan's member agencies, primarily those within the SWP-Dependent Area. The SWRCB plans to schedule a full hearing on the matter.



# Water Resources and Engineering

(continued)



As of February 28, 2023

## Bay-Delta Initiatives

### Project Highlights

#### Delta Conveyance

The public comment period for the Delta Conveyance Project (DCP) Draft Environmental Impact Report (EIR) closed on December 16, 2022. The Department of Water Resources (DWR) received more than 700 unique comment letters with over 6,000 individual comments. DWR is currently working to organize the comments and develop responses. The Final EIR is expected at the end of 2023. It will include responses to all substantive comments on the Draft EIR and edits to the Draft EIR, as appropriate, to respond to the comments.

The U.S. Army Corps of Engineers released the public Draft Environmental Impact Statement (EIS) for DCP in December 2022, and comments are due on March 16, 2023. The Draft EIS has some similarities to DWR's Draft EIR but also some key differences. DWR prepared a summary of the similarities and differences. It is available on the DWR website. ([https://water.ca.gov/-/media/DWR-Website/Web-Pages/Programs/Delta-Conveyance/Environmental-Planning/DWR\\_DCP\\_DRAFT-EIS\\_FS\\_Final\\_Dec-2022.pdf](https://water.ca.gov/-/media/DWR-Website/Web-Pages/Programs/Delta-Conveyance/Environmental-Planning/DWR_DCP_DRAFT-EIS_FS_Final_Dec-2022.pdf)).

#### Joint Powers Authorities

During the regularly scheduled Board of Directors meeting on February 16, the Delta Conveyance Design and Construction Authority (DCA) Board of Directors adopted a resolution commending and thanking Director Richard Atwater for his service on the DCA board. Director Atwater was instrumental to the creation of the DCA, its success to date, and its expected continued development. Director Miguel Luna is the new Metropolitan representative on the DCA board. The DCA board also approved a resolution extending the authorization for virtual board and committee meetings and received the monthly board report information item.

The February 16 regularly scheduled Delta Conveyance Finance Authority meeting was cancelled.

#### Sites Reservoir

In their February joint meetings, the Sites Project Authority Board (Authority Board) and the Sites Reservoir Committee (Reservoir Committee) conducted the 2023 election of officers. The current committee and workgroup designations and participation was confirmed. The Reservoir Committee and Authority Board also approved the 2023 federal and state legislative priorities for the project.

#### Science Activities

Staff worked with researchers from UC Davis to initiate the second deployment of the Delta Smelt Pilot Propagation Study on Bouldin Island. The purpose of the study is to evaluate whether the impoundments on Metropolitan islands can be leveraged to conduct Delta Smelt Supplementation Research. The first deployment from November 21, 2022, to January 5, 2023, successfully demonstrated that it is possible. The second deployment is to repeat and verify the results and test conditions during the warmer period of March 2023.

Phase 3 of the Reorienting to Salmonid Recovery project started this month and includes developing an agreed-upon suite of priorities for salmonid recovery. This phase will use an iterative approach with participants and modelers to review and refine recovery scenarios. Staff is organizing intensive workshops for participants to work in groups using web applications developed to evaluate model output sensitivity to different salmonid management scenarios and



understand the trade-offs associated with different suites of recovery actions. Workshops will be held March to December 2023.

## **Regulatory Activities**

On February 13, in response to Governor Newsom's [Executive Order \(EO\) N-3-23](#) to build water resilience amid climate-driven weather extremes, both DWR and the U.S. Bureau of Reclamation (USBR) submitted a Temporary Urgency Change Petition (TUCP) to the State Water Resources Control Board (State Board). This TUCP requested approval to temporarily modify the most-westerly X2 (2 parts per thousand isohaline at Port Chicago) compliance location specified in their water right permits for February and March to the next upstream compliance location at Chipps Island. Without the TUCP, DWR and USBR would be required to cut Delta exports and/or release stored water from upstream reservoirs to provide an estimated 700,000 acre-feet of Delta outflow required to maintain the X2 at Port Chicago. On February 14, the California Department of Fish and Wildlife (CDFW) submitted a letter to the State Board identifying no unreasonable impacts to fish and wildlife resulting from the TUCP. On February 22, the State Board conditionally approved the changes within the TUCP through March 31, 2023.

Staff coordinated with the State Water Contractors to develop and implement a special environmental DNA monitoring program, from January 20 to February 3, to determine whether Delta smelt were present in the South Delta turbidity field and to evaluate the effects of the 2019/20 Biological Opinion and Incidental Take Permit Early Winter Pulse Protection Action. The monitoring did not detect Delta smelt in the south Delta, suggesting that the action may not always be needed during high turbid conditions. The monitoring results may inform management of turbidity to reduce the entrainment of Delta smelt.

## **Delta Island Activities**

Staff submitted a \$20 million concept proposal to the Delta Conservancy's Nature Based Solutions: Wetland Restoration Grant Program. The concept proposal is for a three-year project that will convert approximately 4,500 acres on Webb Tract to a mosaic of managed flooded wetlands and rice fields to stop and/or reverse ongoing organic soil subsidence, reduce greenhouse gas emissions, provide environmental benefits by contributing to augmentation of the Delta pelagic food web, and generate an income from carbon credits generated from the proposed flooded wetlands and lease income from the proposed rice fields. The proposed project has been selected to move forward in the grant process. Staff will introduce the project at Metropolitan's March One Water and Stewardship Committee meeting. The Delta Conservancy Board will consider the Webb Tract grant application at an upcoming board meeting, anticipated in summer or fall 2023.

## Colorado River

### **Metropolitan Highlights Risks of Six Basin State Proposal to Metropolitan's Colorado River Supplies**

After the Colorado River Basin States (Basin States) were unable to develop a consensus proposal to be submitted to the Bureau of Reclamation (Reclamation) in the Supplemental Environmental Impact Statement (SEIS) to the 2007 Colorado River Interim Guidelines, California and six Basin States each submitted modeling proposals. The California proposal focuses on maximizing voluntary compensated conservation and contemplates mandatory cutbacks only if needed, whereas the six Basin State proposal immediately imposes significant cutbacks to all water users in the Lower Basin. Metropolitan staff analyzed the risk of the six Basin State proposal to our region, concluding that although the proposal purported to evenly share cuts, up to 75 percent of Metropolitan's Colorado River supplies would actually be placed at risk. Metropolitan explained those risks to several outside entities, including the Los Angeles Times Editorial Board and members of Congress, to highlight the potential impact to our service area. While two modeling proposals were submitted for the Draft SEIS, Metropolitan staff continued to work with the other Basin States to see whether a seven-state consensus proposal can be submitted to Reclamation for the Final EIS. It is anticipated that comments for that document will be due in late May or early June 2023.

## Engineering

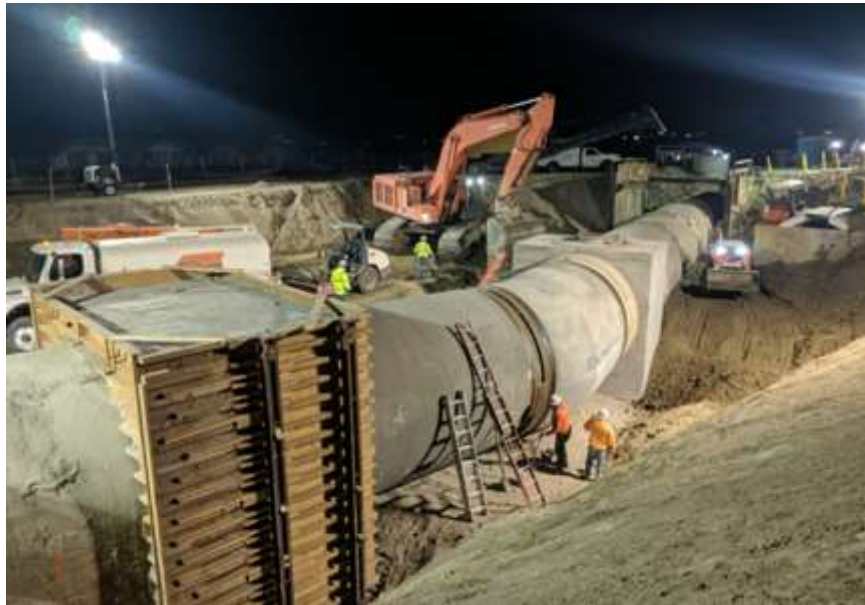
### Core Business Function—Execute Capital Investment Plan projects

Engineering Services manages and executes projects within the Capital Investment Plan (CIP) to maintain infrastructure resiliency, ensure regulatory compliance, enhance sustainability, and provide flexibility in system operations to address uncertain water supply conditions.

#### Distribution System Reliability Program

This program maintains reliable water deliveries through specific rehabilitation and upgrade projects on Metropolitan's pipelines, reservoirs, and control structures. Recent activities include the following:

- **Casa Loma Siphon Seismic Upgrades**—This project mitigates leaks associated with long-term ground subsidence and will improve seismic resilience of the siphon as it crosses the Casa Loma Fault. This project replaces approximately 1,200 feet of the Casa Loma Siphon Barrel No. 1 at a fault crossing using earthquake-resistant ductile iron pipe (ERDIP) and welded steel pipe. The final tie-in was completed in February 2023 during the planned CRA shutdown and will be placed into operation once the shutdown is completed. Overall construction is approximately 90 percent complete and is scheduled to be complete by May 2023.
- **Etiwanda Pipeline Relining**—This project will remove damaged mortar lining in 5.5 miles of pipeline and replace it with polyurethane lining. Stages 1 and 2, which relined 3 miles of the pipeline, have already been completed. Stage 3 will reline the remaining 2.5 miles of pipeline and is currently under construction. The contractor is removing mortar lining and installing noise control panels at pipe entry portals. Stage 3 construction is approximately 42 percent complete and is scheduled to be complete by October 2023.
- **La Verne Shop Improvements**—This project includes the installation of previously procured equipment, installation of new contractor-furnished equipment, refurbishment of existing equipment, and completion of building and utility improvements for several shop buildings. The contractor has completed several small shop equipment foundations in the fabrication shop, started excavation for a large floor mill foundation in the machine shop, and is repairing the damaged exterior concrete walls of the machine and fabrication shop. Construction is approximately 16 percent complete and should be completed in late 2024.
- **Orange County Feeder Relining**—This project replaces the deteriorated internal lining along an 11-mile portion of the Orange County Feeder within the cities of Santa Ana, Costa Mesa, and Newport Beach. Rehabilitation is proceeding in three stages. Construction of Stages 1 and 2 are complete. The shutdown for Stage 3 began in September 2022. The contractor is currently performing construction at multiple sites; work includes excavation for access pits, removal of the existing coal tar lining, welding butt-straps on all the joints, and installing new mortar lining. Construction is approximately 30 percent complete and is anticipated to be complete by September 2023.
- **Lake Mathews Wastewater**—This project installs a wastewater system in place of existing septic tank system at the Lake Mathews facility. The new wastewater system connects various facilities at Lake Mathews and ultimately connects to Western Municipal Water District main wastewater line. The contractor continues to install the wastewater line and plans to connect to the Western Municipal Water District line in early March 2023. Construction is 81 percent complete and is scheduled to be complete by June 2023.



**Casa Loma Siphon Seismic Upgrades—Casa Loma Siphon Barrel No. 1 west tie-in backfill**



**Etiwanda Pipeline Relining—Testing new polyurethane coating**



La Verne Shop Improvements—Welding trench drain supports

## Prestressed Concrete Cylinder Pipe (PCCP) Reliability Program

This program was established to enhance the reliability of Metropolitan’s water distribution system and to reduce the risk of costly emergency repairs of PCCP. The priority pipelines included in the program are the Second Lower Feeder, Sepulveda Feeder, Calabasas Feeder, Rialto Pipeline, and the Allen-McColloch Pipeline. A total of 100 miles of PCCP pipelines will eventually be relined with new steel pipe liners under this 20-year program. Recent activities include the following:

- **Second Lower Feeder PCCP Rehabilitation Reach 3A**—This project enhances distribution system reliability by rehabilitating 6,500 feet PCCP portions of the Second Lower Feeder within the city of Rolling Hills Estates. The contractor has completed the traffic control, fencing, excavation, shoring, and the PCCP pipe demolition at the first pipe access site, and continues with pipe deliveries, installation, and welding. The contractor commenced work at the second and final pipe access site. Construction is 45 percent complete and is scheduled to be complete in August 2023.
- **Sepulveda PCCP Reach 1**—This project enhances distribution system reliability by rehabilitating PCCP segments of the Sepulveda Feeder. Reach 1 spans 4.7 miles through several cities including the City of Hawthorne, City of Inglewood, and City of Los Angeles. Final design is approximately 72 percent complete and is scheduled to be complete in August 2023.
- **Rialto Pipeline Rehabilitation Reach 1**—This project will rehabilitate approximately 4.5 miles of Rialto PCCP from the Indian Hills Sectionalizing Valve to the San Dimas Hydroelectric Plant. The project is currently in preliminary design, and all pipe access sites for relining of this reach have been identified. Preliminary design is approximately 50 percent complete and is scheduled to be completed by mid-2024.
- **Electromagnetic Inspections**—This project performs inspections of Metropolitan’s PCCP distribution system pipelines to prioritize rehabilitation of those pipelines. Inspection of portions of the Yorba Linda Feeder was completed during a planned shutdown in January 2023.



## Colorado River Aqueduct (CRA) Reliability Program

This program maintains the reliability of Metropolitan’s CRA conveyance system. Recent activities include the following:

- **Domestic Water System**—This project replaces the membrane filtration system and associated water treatment equipment at the five Colorado River Aqueduct pumping plants. Procurement of water treatment equipment is underway. Three membrane systems were delivered in November 2022 and the remaining three are expected to be delivered in mid-2024. Construction is currently paused to avoid conflicts during the annual CRA shutdown. The contractor is expected to install the temporary water treatment system at Intake Pumping Plant in Spring 2023. Construction is 18 percent complete and is scheduled to be complete by March 2025.
- **Mile 12 Flow Monitor**—This project will replace the CRA Mile 12 flow meter and upgrades the appurtenant facilities at the monitoring station. The contractor is completing the final terminations and testing of the electrical equipment. Construction is 93 percent complete and is scheduled to be completed by May 2023.
- **Conduit Structural Protection**—This project consists of installing new reinforced concrete slab protection crossings over portions of the cut-and-cover conduits on the Colorado River Aqueduct. Final design is complete, and award of a construction contract is scheduled for the April 2023 board meeting.
- **CRA Storage Buildings**—This project furnishes and installs storage buildings at Hinds, Eagle Mountain, and Iron Mountain and constructs associated site improvements. Final design is complete, and award of a construction contract is scheduled for the May 2023 board meeting.

## System Flexibility/Supply Reliability

Projects under this program will enhance the flexibility and/or increase the capacity of Metropolitan’s water supply and delivery infrastructure to meet current and projected service demands. Projects under this program address climate change affecting water supply, regional drought, and alternative water sources for areas dependent on State Project Water. The following projects are part of a series of projects that are being undertaken to improve supply reliability for State Water Project-dependent member agencies.

- **Inland Feeder Surge Protection**—In conjunction with the Wadsworth Pumping Plant-Eastside Pipeline Intertie, Foothill Pump Station Intertie, and Inland Feeder-Rialto Pipeline Intertie projects, this project enhances water supply reliability in the Rialto Pipeline service area by enabling water to be pumped from the Wadsworth Pumping Plant forebay to Rialto Pipeline by way of the Inland Feeder. This project will provide surge protection for the Badlands Tunnel portion of the Inland Feeder when water is being pumped from Wadsworth Pumping Plant. Final design for this project is approximately 90 percent complete and is anticipated to be complete in April 2023.
- **Inland Feeder-Rialto Pipeline Intertie**—In conjunction with other projects, this project enhances water supply reliability in the Rialto Pipeline service area by enabling water to be pumped from the Wadsworth Pumping Plant forebay to Rialto Pipeline by way of the Inland Feeder. This project will install an interconnection pipeline and isolation valve structure between the Inland Feeder and Rialto Pipeline. Final design for this project is approximately 90 percent complete and is anticipated to be complete in April 2023.
- **Inland Feeder/SBVMWD Foothill Pump Station Intertie**—This project will connect San Bernardino Valley Municipal Water District’s (SBVMWD) Foothill Pump Station with the Inland Feeder to provide the needed hydraulic lift to deliver water from DVL to the Rialto service area. Final design is 90 percent complete and is scheduled to be complete in April 2023. Concurrent with the design effort, staff is also working with SBVMWD



on a joint-use agreement for the facility. Staff is also working with US Fish and Wildlife to address issues related to the presence of a protected species in the vicinity of the planned construction. A procurement contract for valves has been advertised and is scheduled for award by the Board in April 2023.

- **Wadsworth Pumping Plant Bypass**—In conjunction with other projects, this project enhances water supply reliability in the Rialto Pipeline service area by enabling water to be pumped from the Wadsworth Pumping Plant forebay to Rialto Pipeline by way of the Inland Feeder. This project will install a bypass pipeline and an isolation valve to interconnect the Wadsworth Pumping Plant with the Eastside Pipeline. A construction contract was awarded in January 2023, and the Notice to Proceed was issued on January 31, 2023. Pre-construction activities are starting, including preparation of submittals. Construction is anticipated to be completed by February 2024.
- **Sepulveda Feeder Pumping Stations**—This project will install new pump stations at the existing Venice and Sepulveda Canyon Pressure Control Facilities, providing the ability to reverse flow in the Sepulveda Feeder and deliver water from the Central Pool to parts of the Jensen plant exclusive area. This project will use progressive design-build (PDB) for delivery. Preparation of the Request for Qualifications, including a Conceptual Design Report, is 90 percent complete with a forecasted issue date in March 2023. Board award of the Phase 1 agreement for preconstruction services under the PDB contract is scheduled for August 2023.

## Treatment Plant Reliability Program

This program was initiated to maintain reliability and improve the operating efficiency of Metropolitan's water treatment plants through specific improvement projects. Recent activities include the following:

- **Weymouth Basins 5–8 and Filter Building No. 2 Rehabilitation**—This project rehabilitates major mechanical and structural components including the flocculation/sedimentation equipment, sludge pumps, baffle boards and walls, launders, inlet gates, and outlet drop gates at the Weymouth plant. Other improvements included in this contract are seismic upgrades of basin walls and inlet channel, hazardous material abatement, and replacement of filter valves and actuators in Filter Building No. 2. During a planned outage of Basins 5–8, the contractor completed installation and testing of six new Metropolitan-furnished filter valves, an isolation drop gate in the basin inlet channel, and critical electrical equipment. In January, the half-plant shutdown was completed on schedule. The contractor has started work under the first planned quarter-plant outage including equipment removal, hazardous waste abatement, and installation of temporary cranes. Construction is 20 percent complete and is scheduled to be complete by May 2025.
- **Mills Ozonation System PLC Upgrade**—This project replaces the outdated generator control system at the Mills plant with new PLC equipment along with upgraded software. Installation of the new software was completed in January 2023. Metropolitan forces are currently commissioning the upgraded software with support from a specialized consultant. The system upgrade is scheduled to be completed by April 2023.
- **Mills Electrical Upgrades, Stage 2**—This project upgrades the electrical system with dual-power feeds to key process equipment to comply with current codes and industry practices; improve plant reliability; and enhance worker safety. Stage 1 construction is complete. Stage 2 improvements will add a second incoming 12 kV service from Riverside Public Utilities (RPU), reconfigure the existing 4160-volt switchgear, and replace the standby generator switchgear and the emergency generator programmable logic controller. The contractor has started installation of duct banks and electrical vaults and is preparing to expand the ORP ozone switchgear building. Shutdowns are planned in March 2023 and Spring 2024. Construction is 22 percent complete and is scheduled to be complete by December 2024. Shutdowns are planned in March 2023 and Spring 2024.

# Water Resources and Engineering

(continued)



**Weymouth Basins 5-8 and Filter Building No. 2 Rehabilitation—Installing crane pad**



**Mills Electrical Upgrade—RPU Switchyard—Concrete placement near electrical vault**

## System Reliability Program

The System Reliability Program consists of projects to improve or modify facilities located throughout Metropolitan's service area in order to use new processes and/or technologies and improve facility safety and overall reliability. Recent activities include the following:

- **Headquarters Physical Security Upgrades**—This project implements comprehensive security upgrades for the Metropolitan Headquarters Building. These upgrades are consistent with federally recommended best practices for government buildings. This work has been prioritized and staged to minimize rework and impacts on day-to-day operations within the building. Stage 1 work is complete and provides enhanced security related to perimeter windows and doors. Stage 2 work is complete and provides security system upgrades inside the building with a focus on the main entry rotunda area, boardroom, executive dining lounge, and security control room. Stage 3 improvements will provide security system upgrades around the perimeter of the building. A construction contract for Stage 3 improvements was awarded in December 2022, and the contractor is transmitting project submittals. Construction is scheduled to be complete by December 2023.
- **Headquarters Building Fire Alarm and Smoke Control System Upgrades**—This project upgrades the Metropolitan Headquarters Building fire life safety systems, which includes replacement of the fire detection and alarm system and HVAC system improvements for smoke control. The fire alarm and smoke control systems in the Metropolitan Headquarters Building provide detection, notification, and control of building functions so that occupants and visitors can safely exit in the event of a fire. The contractor completed the fire alarm and the emergency responder radio communication system upgrades and is currently working on the smoke control upgrades. Construction is 80 percent complete and is scheduled to be complete by September 2023.
- **SCADA System Upgrades**—This project will upgrade Metropolitan's entire control system in incremental stages, spanning the Colorado River Aqueduct, the five water treatment plants, and the conveyance and distribution system. The first stage of this project replaces the control system at the Mills plant, starting with a pilot effort on one of the plant's remote terminal units. The pilot effort will demonstrate the proposed technology and the consultant's approach for the plant and the overall project. The consultant is currently providing submittals. The pilot phase is 12 percent complete and is scheduled to be complete by September 2023. The system upgrades at the Mills plant are scheduled to be complete by April 2026.



# Operations

## Water System Operations Core Business Objectives



### Prepare Employees for New Opportunities

The Water System Operations Apprentice and Technical Training Programs develop and train personnel to become qualified mechanics and electricians responsible for maintaining Metropolitan's water treatment and distribution systems. This month, Apprentice and Technical Training staff visited desert facilities and met with apprentices, journeymen, and managers to discuss and answer questions about the Apprenticeship Program. These meetings facilitate ongoing communication between program administration and apprentices and provide an opportunity to include journeymen and managers who oversee apprentices' work. In addition to Apprenticeship, staff reviewed regulatory training requirements and safety and technical training completion percentages and encouraged employees to complete training in a timely manner. Apprentice and Technical Training staff will continue to visit field sites in coming months.

The Class of 2026 electrical apprentices completed first period midterm exams on industrial health and safety. The Class of 2023 electricians and mechanics continued the eighth period of instruction. This month, apprentices prepared a job or shutdown plan and presented it to the class. Apprentices prepare tasks, coordinate resources, organize timelines, and identify affected agencies. As a result, apprentices will be equipped as journeymen to plan and communicate work that complies with Metropolitan policies and procedures.



Apprenticeship program staff, apprentices, and journeymen (left) and mechanical instructor and an apprentice (right) at Hinds pumping plant



**Apprentices viewing micrometer with instructors**

## **Administer Group Operations, Provide Management Controls, and Access Available**

### **Manage Vacancies**

WSO filled nine vacant positions in January.

### **Provide Reliable Water Deliveries**

Metropolitan member agency water deliveries were 60,100 acre-feet (AF) for February with an average of 2,150 AF per day, which was 110 AF per day higher than in January. Treated water deliveries increased by 3,200 AF from January for a total of 37,500 AF, or 62 percent of total deliveries for the month. The Colorado River Aqueduct (CRA) was at zero flow at the beginning of the month and transitioned to a four-pump flow near the end of the month, with a total of 14,000 AF pumped in February. State Water Project (SWP) imports averaged 250 AF per day, totaling about 7,050 AF for the month, which accounted for approximately 12 percent of Metropolitan's deliveries. The target SWP blend remained at zero percent for the Weymouth, Diemer, and Skinner plants, except for the last day of the month when Weymouth and Diemer plants transitioned to 30 percent SWP blend on their way towards 100 percent SWP before the Lake Mathews shutdown in mid-March.

### **Manage Water Reserves**

Water reserves continued to be managed according to Water Surplus and Drought Management (WSDM) principles, operational objectives, and the low State Water Project (SWP) allocation. Deliveries of SWP supplies were minimized to preserve SWP Carryover and Flexible Storage. Releases from Diamond Valley Lake (DVL) through PC-1 to connections on the Lakeview Pipeline, as well as the DVL-to-Mills plant operation, continued in February to conserve SWP supply use in that area. Returns from the Semitropic and Kern Delta SWP Banking Programs continued in February. Friant surface water supplies were also provided to Metropolitan in exchange for return water from the Arvin Program. In addition, staff continued coordination with member agencies, shifting their deliveries from SWP

connections to Colorado River water connections, when possible. Staff continues to evaluate the drought actions and the potential to shift to normal or wet year operations should the SWP supplies continue to improve in 2023.

## **Support the Pure Water Southern California Program**

Staff worked with the Los Angeles County Sanitation Districts to continue baseline testing of secondary membrane bioreactor operations at the Pure Water Southern California demonstration plant in Carson. The project team coordinated on preparing materials for upcoming meetings with the state regulators from the Division of Drinking Water and Regional Water Quality Control Boards on March 13, and the Independent Science Advisory Panel in late March.

## **Manage Power Resources and Energy Use in a Sustainable Manner**

Energy markets in February did not exhibit the same price volatility as in December 2022 and in January, and electricity prices in the California Independent System Operator (CAISO) market were within seasonal norms. As the CRA was shut down for most of February, Metropolitan was a net energy contributor to the CAISO market, through the hydropower allocations at Hoover and Parker dams. Net electric revenue for Metropolitan for February was approximately \$2.3 million.

Because of low SWP allocations and system operating conditions, Metropolitan's hydroelectric plants generated an average of about 2.8 megawatts, or 2,065 megawatt-hours and \$306,290 in revenue, for January 2023. Metropolitan's solar facilities totaling 5.4 megawatts of capacity generated approximately 491 megawatt-hours in January 2023.

## **Ensure Water Quality Compliance, Worker Safety, and Environmental Protection**

Metropolitan complied with all water quality regulations and primary drinking water standards during January 2023.

On February 7, Metropolitan hosted its quarterly meeting with the State Water Resources Control Board's Division of Drinking Water. Discussion topics included updates on regulations, cybersecurity, capital projects, elevated turbidity in Castaic Lake following January rainstorms and the Jensen plant's excellent performance in managing turbidity, current projects to operate the Jensen plant at a new minimum flow, and bromate monitoring results.

In October and November 2022, the Water Quality Laboratory in La Verne and the satellite laboratories at each of the treatment plants were audited by a state-approved assessor under the newly adopted state laboratory accreditation regulation. The final results of this multi-lab audit were provided at the end of January 2023, with the laboratories meeting all requirements under the regulation, allowing Metropolitan to now submit its accreditation renewal application to the state later in the year.

This month, staff published and posted the WSO Environmental, Health and Safety (EHS) Performance Chart on the IntraMet for calendar year 2022. The chart presents how operational units performed against established EHS performance metrics and the results are used to tabulate safety awards given during National Safety Month celebrations in June.



Date of Last Update:2/14/2023

Includes Data Up To:CY 2022

Good Met

Good Not Met

WSO EHS Performance Chart

Calendar Year 2022


		Leading Indicators												Lagging Indicators																Regulatory Inspection Count																																																																																																																																																																																																																																																																																																																																																																																																																																																																																																																																																																																																																																																																																																																																																																																																																																																																																																																		
		Safety Inspection Completion Rate (%)		Training Completion Rate (Running % for CY)				Toolbox Completion Rate (%)		Safety Committee Meeting Rate (%)		Lost Checklist Completion Count		Near Miss Submissions Count		Recordable Injury Count		Reportable Chemical Release or Spill Count		Regulatory Inspection Findings - NCV Count		Regulatory Inspection Findings - NTC Count																																																																																																																																																																																																																																																																																																																																																																																																																																																																																																																																																																																																																																																																																																																																																																																																																																																																																																																										
		Q1	Q2	Q3	Q4	Q1	Q2	Q3	Q4	Q1	Q2	Q3	Q4	Q1	Q2	Q3	Q4	Q1	Q2	Q3	Q4	Q1	Q2	Q3	Q4	Q1	Q2	Q3	Q4		Q1	Q2	Q3	Q4	Q1	Q2	Q3	Q4																																																																																																																																																																																																																																																																																																																																																																																																																																																																																																																																																																																																																																																																																																																																																																																																																																																																																																										
WT - Glenview Unit		100	100	100	100	100	100	100	100	100	100	100	100	100	100	100	100	100	100	100	100	100	100	100	100	100	100	100	100	100	100	100	100	100	100	100	100	100	100	100	100	100	100	100	100	100	100	100	100	100	100	100	100	100	100	100	100	100	100	100	100	100	100	100	100	100	100	100	100	100	100	100	100	100	100	100	100	100	100	100	100	100	100	100	100	100	100	100	100	100	100	100	100	100	100	100	100	100	100	100	100	100	100	100	100	100	100	100	100	100	100	100	100	100	100	100	100	100	100	100	100	100	100	100	100	100	100	100	100	100	100	100	100	100	100	100	100	100	100	100	100	100	100	100	100	100	100	100	100	100	100	100	100	100	100	100	100	100	100	100	100	100	100	100	100	100	100	100	100	100	100	100	100	100	100	100	100	100	100	100	100	100	100	100	100	100	100	100	100	100	100	100	100	100	100	100	100	100	100	100	100	100	100	100	100	100	100	100	100	100	100	100	100	100	100	100	100	100	100	100	100	100	100	100	100	100	100	100	100	100	100	100	100	100	100	100	100	100	100	100	100	100	100	100	100	100	100	100	100	100	100	100	100	100	100	100	100	100	100	100	100	100	100	100	100	100	100	100	100	100	100	100	100	100	100	100	100	100	100	100	100	100	100	100	100	100	100	100	100	100	100	100	100	100	100	100	100	100	100	100	100	100	100	100	100	100	100	100	100	100	100	100	100	100	100	100	100	100	100	100	100	100	100	100	100	100	100	100	100	100	100	100	100	100	100	100	100	100	100	100	100	100	100	100	100	100	100	100	100	100	100	100	100	100	100	100	100	100	100	100	100	100	100	100	100	100	100	100	100	100	100	100	100	100	100	100	100	100	100	100	100	100	100	100	100	100	100	100	100	100	100	100	100	100	100	100	100	100	100	100	100	100	100	100	100	100	100	100	100	100	100	100	100	100	100	100	100	100	100	100	100	100	100	100	100	100	100	100	100	100	100	100	100	100	100	100	100	100	100	100	100	100	100	100	100	100	100	100	100	100	100	100	100	100	100	100	100	100	100	100	100	100	100	100	100	100	100	100	100	100	100	100	100	100	100	100	100	100	100	100	100	100	100	100	100	100	100	100	100	100	100	100	100	100	100	100	100	100	100	100	100	100	100	100	100	100	100	100	100	100	100	100	100	100	100	100	100	100	100	100	100	100	100	100	100	100	100	100	100	100	100	100	100	100	100	100	100	100	100	100	100	100	100	100	100	100	100	100	100	100	100	100	100	100	100	100	100	100	100	100	100	100	100	100	100	100	100	100	100	100	100	100	100	100	100	100	100	100	100	100	100	100	100	100	100	100	100	100	100	100	100	100	100	100	100	100	100	100	100	100	100	100	100	100	100	100	100	100	100	100	100	100	100	100	100	100	100	100	100	100	100	100	100	100	100	100	100	100	100	100	100	100	100	100	100	100	100	100	100	100	100	100	100	100	100	100	100	100	100	100	100	100	100	100	100	100	100	100	100	100	100	100	100	100	100	100	100	100	100	100	100	100	100	100	100	100	100	100	100	100	100	100	100	100	100	100	100	100	100	100	100	100	100	100	100	100	100	100	100	100	100	100	100	100	100	100	100	100	100	100	100	100	100	100	100	100	100	100	100	100	100	100	100	100	100	100	100	100	100	100	100	100	100	100	100	100	100	100	100	100	100	100	100	100	100	100	100	100	100	100	100	100	100	100	100	100	100	100	100	100	100	100	100	100	100	100	100	100	100	100	100	100	100	100	100	100	100	100	100	100	100	100	100	100	100	100	100	100	100	100	100	100	100	100	100	100	100	100	100	100	100	100	100	100	100	100	100	100	100	100	100	100	100	100	100	100	100	100	100	100	100	100	100	100	100	100	100	100	100	100	100	100	100	100	100	100	100	100	100	100	100	100	100	100	100	100	100	100	100	100	100	100	100	100	100	100	100	100	100	100	100	100	100	100	100	100	100	100	100	100	100	100	100	100	100	100	100	100	100	100	100	100	100	100	100	100	100	100	100	100	100	100	100	100	100	100	100	100	100	100	100	100	100	100	100	100	100	100	100	100	100	100

## The Environmental, Health and Safety Performance Chart posted on the IntraMet

Staff published and posted several Safety Talks on the IntraMet to inform and promote employee safety during on-the-job activities. Topics included Hazardous Chemicals Awareness, Effective Housekeeping, Safety Communication, Stress in the Workplace and Employee Assistance Program, 10 Steps to Safety, and Excavation Hazards.

### MWD Safety Talk

Employee Environmental, Health & Safety Information for Electrical Safety: Don't Get Shocked



**Don't Get Shocked**  
Electrical shocks occur when a person becomes part of a circuit and the current flows through the body. Shocking someone, even if it seems harmless, can be dangerous. Shocking is extremely dangerous when working with electrical equipment, cables, and conductors.

Equipment with a grounding prong must be plugged into an extension cord with a ground. Never disconnect the grounding plug from the equipment.

**Prevention is the Best Policy**

- Only qualified and authorized employees shall work on electrical equipment. Never use electrical tools when working with electricity.
- Follow the emergency response plan and the check-out procedures before the work begins.
- Use PPE: wear eye protection and insulated hand tools and boots. Do not wear jewelry.
- Use insulated tools and equipment.
- Do not become involved in any emergency. Stop work, stop the equipment, and call for help.
- Test equipment being repaired by pressing the START/ON button.
- Do not touch the wiring again. If a wire breaks, it may be energized (dead or hot). Handle it safely. Use it out of service immediately and tag it "Do Not Use."
- Keep electrical work area clear and clean.
- Use a Ground Fault Circuit Interrupter (GFCI) on wet, damp, or outdoor locations.
- Do not use an extension cord as permanent wiring. Remove extension cords after temporary use for any activity if equipment is powered from an extension cord for more than 30 days. Then a permanent location shall be installed.
- Play it safe: use personal safety equipment: any high-voltage equipment such as power lines, power cables, conductors, insulators, transformers, or other equipment.
- Do not connect cables. Use proper technique. Do not use two or more cable connections together.
- Do not touch power cords with eyes or ears.
- Do not use electrical tools through protective covers or shields.
- Control any exposed electrical components or wires. Keep 3-foot clearance in front of electrical panels.
- Unplug cords from this outlet by pulling the plug. Do not pull the cord.

**If an Electrical Shock Incident Occurs, Know How to Respond**

- Designate someone to call 911 and notify the Area Control Center (ACC).
- If possible and safe to do so, turn off the source of the current. Use a wooden or plastic nonconductive item to remove power from contact with the person. Do not touch the person or any object that has become part of the circuit yourself.
- Resuscitate if person is breathing and check for a pulse. If needed, begin CPR when necessary.
- Keep the person lying down until medical personnel arrive. Do not move the person. Keep the person calm and help them. Immediately have a medical professional check on the person's condition.

**Discussion Questions**

- Can you identify any sources of electricity that need attention? What can you do to prevent getting shocked?

### MWD Safety Talk

Employee Environmental, Health & Safety Information for When to Call 911 or Go to Nearest Hospital Emergency Room or Go to a MWD Industrial Medical Provider

**When to Call 911 or Go to Nearest Hospital Emergency Room**

**OR**

**Go to Nearest Hospital Emergency Room**

- Heart trouble
  - Full motor vehicle collision, uncontrollable bleeding, unconscious, serious burns, broken bone, dislocation
- Life-threatening injuries or illness
  - Electric shock, allergic reaction, drowning, hypothermia, difficulty breathing, blood loss or gas, sudden blindness, vision pain, poisoning or drug overdose
- Any chemical exposure or spill
- Heat-related symptoms
  - Fatality due to product handling, working, skills, thinking, headlight, high body temperature, heatstroke, dehydration, dizziness, nausea, vomiting, or fatigue
- Head injury
  - Concussion, seizures, spinal injury, stroke, serious unconscious
- Other medical conditions such as diabetes or a heart condition and employee in working state and symptoms
- Any other situation requiring immediate assistance from emergency medical services

**When to Go to a MWD Industrial Medical Provider**

Go to the nearest MWD Industrial Medical Provider (IMP) or go to the nearest MWD Industrial Medical Provider (IMP) if you are injured or ill.

- Non-life-threatening conditions
  - The need to stop working, heat, minor infection, headache, and stomach ache. Not breathing through first aid supplies.
- Minor injuries
  - Small cuts and abrasions, sprains and strains.
- Non-injury (minor ailments)
- Minor medical (pain, run, or sniff)
- Minor (minor medical)
- Minor (minor medical)

**Important Reminders**

- Never leave a injured employee alone. If necessary, call for help from other employees.
- Never send an employee home after a reported serious medical issue unless instructed by the medical provider.
- When 911 is contacted, notify the Area Control Center (ACC) or Security Watch Center at (800) 333-3333 so that they can direct the nearest emergency response to the emergency site. Those who respond to medical facility have a designated MWD Industrial Medical Provider (IMP) to assist the injured worker. MWD Industrial Medical Provider (IMP) will assist the injured worker. MWD Industrial Medical Provider (IMP) will assist the injured worker. MWD Industrial Medical Provider (IMP) will assist the injured worker.
- Notify Team Manager, IMP Manager, and OHS Site Support representative of incident as soon as possible.
- Report incident to the Incident Reporting System at (800) 333-3333 or (800) 333-3333.



## Safety Talks published and posted to the IntraMet

Staff pulled a communication cable between the hazmat 90-day storage area and the treatment plant control center at the Diemer plant. The new communication cable and high-level sensor will provide alarms to the Control Room in the event of a spill in the hazmat 90-day storage area.



**Staff upgrading hazmat storage area sensor cables at the Diemer plant**

## Optimize Maintenance

The 2023 CRA shutdown was performed over 24 days throughout the month of February. This annual shutdown allowed contractors and staff to work on several capital projects as well as complete maintenance, repairs, and inspections along the 242-mile long aqueduct and five desert pumping plants. Capital projects included the Hinds Pumping Plant panel replacement, the Hayfield tunnel level transducer installation, contractor delivery-line mortar lining repairs, and contractor repair of the Cholla Wash lining project. Operations and maintenance work included performing regulatory-required high-voltage system and transformer maintenance and testing, servicing the 230kV transmission system, completing coating repairs and inspections, servicing valves and gates, and cleaning canals and tunnels. The tunnel cleaning machine, designed and built by Metropolitan staff, traveled over 80 miles underground this year, cleaning and smoothing out concrete to maximize CRA flows. Staff also performed crack injection sealing inside Freda Siphon to reduce losses along the canal and inside the cable tunnel to prevent water intrusion at Hinds pumping plant. The transition structures, which connect delivery lines with headgate structures, were also repaired to prevent leaks and future erosion. Additionally, staff coordinated an outage of the Lakeview Siphon on the CRA and the interconnected San Diego Canal to perform a minor leak repair and install an enhanced dewatering sump to expedite canal dewatering. Nearly 300 employees and contractors safely coordinated to complete the critical work performed during the shutdown that helps keep the over 80-year-old aqueduct delivering Colorado River water reliably.





**Staff performing maintenance and repairs on a 230kV circuit breaker at Hinds pumping plant**



**Staff preparing to perform underwater cleaning at Intake pumping plant**



**Eagle Mountain inlet channel before (left) and after cleaning (right) with heavy equipment**



**Staff performing measurements of the discharge valve at Eagle Mountain pumping plant**



**Staff performing high-voltage switching at Hinds pumping plant**



**Staff staging area in support of the tunnel cleaning machine and crew**



**Desert staff lowering the tunnel cleaning machine into the CRA**



**Desert staff using heavy equipment to clean along the CRA during a high wind event**





**Staff performing high-voltage maintenance during the CRA shutdown**



**Staff performing inspections at Hinds pumping plant**



**The morning view from the Eagle Mountain headgate structure during the CRA shutdown**

Pipelines, aqueducts, and other conveyance infrastructure must often be dewatered to perform maintenance. Portable pumps and pipelines are constructed to ensure that the excess water is routed through proper draining areas. Staff fabricated drainage pipes to accommodate dewatering the CRA ahead of the 2023 shutdown.



**Staff fabricating a pipeline for a portable pump to dewater during the CRA shutdown**

Staff dewatered the Casa Loma Siphon during the CRA shutdown to accommodate contractor work to tie in earthquake-resistant flexible pipe. A dedicated 30-inch dewatering pipeline was used to route the discharge water back into the CRA, saving 65 AF of water.



**Staff dewatering the Casa Loma Siphon during the CRA shutdown**



**A large gate lowered into the CRA defines the beginning of the Casa Loma Siphon clearance**



**Inside view of the CRA downstream of the Casa Loma clearance zone**

Flowmeters on the CRA delivery lines provide instantaneous readings to help modulate flow along the 242-mile-long aqueduct. When the flowmeters fail, staff is quickly dispatched to troubleshoot and repair.



**Staff troubleshooting a flowmeter at Hinds pumping plant**

Monitoring the operating temperatures of main pump bearings provides insight into possible issues such as misalignment, lack of lubrication, or other concerns. Use of a Resistance Temperature Detector (RTD) provides accurate indication of pump bearing temperatures during operation. Staff calibrates the RTDs on an annual basis and replaces them as needed.



**Staff replacing an RTD on pump bearing at Eagle Mountain pumping plant**

Staff completed a shutdown of the Sepulveda Feeder to allow a contractor to internally inspect approximately 10 miles of the pre-stressed concrete cylinder pipe (PCCP) from the Roscoe sectionalizing valve to the Sepulveda Pressure Control Structure (PCS) with a pipe-diver device. The pipe-diver moved inside the pipeline with a controlled low flowrate to gather ultrasonic data to assess the condition of the pipeline. The contractor will analyze the data collected and will report whether there are additional wire breaks compared with a similar inspection that was performed in October 2015. Staff also completed coatings work at Sepulveda PCS on four ball valves, replaced 13 faulty valves, and conducted an inspection of the Peach Street sectionalizing valve during this shutdown.



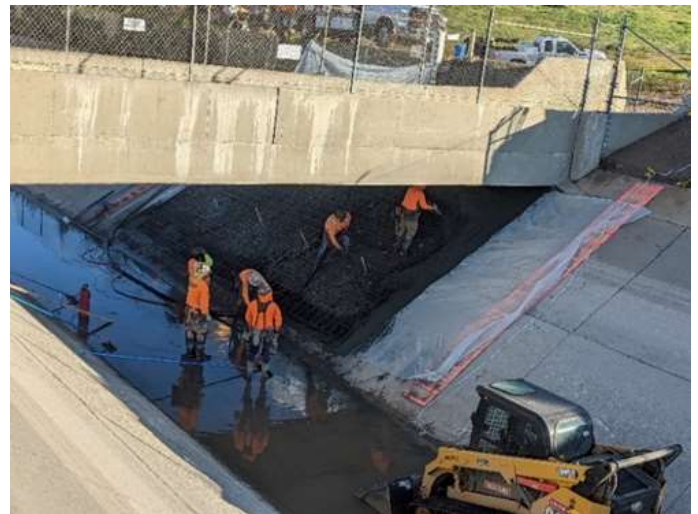
**Staff installing pipe-diver device to begin inspection of the Sepulveda Feeder**





**Metropolitan and contractor staff removing pipe-diver at Sepulveda PCS**

Staff completed liner repairs on the San Diego Canal at two locations. The San Diego Canal is a concrete-lined open channel that conveys Colorado River water from the Casa Loma Canal to Lake Skinner and the Skinner plant. The concrete panels vary in thickness from four to eight inches and are unreinforced. The replacement panels will be six inches thick with reinforcing steel.



**Staff removing (left) and replacing damaged concrete panels (right) on the San Diego Canal**

Staff repaired a 40-year-old air circuit breaker at the Temescal Hydroelectric Plant (HEP). The circuit breaker is used to connect the hydroelectric generator to the grid to export power as well as to isolate electrical faults in the generator.





**Staff repairing circuit breaker at Temescal HEP**

Staff began upgrading the transformer bank protection relays at Hinds pumping plant. The new protection relays are fast-acting devices that detect electrical faults and adjust the transmission line voltage to the voltage required to operate the pumps. The new protection relays add functionality to record fault events for faster troubleshooting in the future and are a critical step to facilitate the upcoming transformer replacement project.



**Staff verifying final wiring of new panels and relays at Hinds pumping plant**



**Staff performing system testing on new transformer protection relay panel at Hinds pumping plant**

The backwash header piping and filter valves are undergoing repairs after an equipment failure at the Diemer plant. This work includes disassembly of the backwash header and valves, restoration of the piping and mounts, coating, and reassembly. Staff installed lifting points into the overhead structure, disassembled the piping and valves, and is making the repairs.



**Staff installing lifting points (left) and removing one of two filter valves (right) at the Diemer plant**



**Staff lowering the main backwash line (left) and performing welding repairs (right) at the Diemer plant**

Weymouth plant staff is tasked with conducting National Fire Protection Association-mandated testing and maintenance of all low-voltage circuit breakers (breakers rated at less than 600 volts), with electronic/digital protection devices. This work is continuous throughout the year and often requires coordination with operations and other teams to complete. Staff recently completed the testing on the breakers in a unit substation. These breakers require the assistance of mechanical staff to lift the equipment using cranes and forklifts to remove the breakers from the substation. This testing improves the reliability and sustainability of the plant's electrical system.



**Electricians preparing for breaker removal at the Weymouth plant**



**Crane lifting circuit breaker at the Weymouth plant**

Staff continued work on disconnecting power and labeling the remote terminal unit (RTU) for the filter consoles in at the Weymouth plant. This work is in preparation for the quarter plant shutdown during the Basins 5–8 Rehabilitation Project. The team labeled all of the conductors going to the RTU boards for more efficient troubleshooting. The result of this work will allow power to the RTU to be easily disconnected to allow staff to safely work when troubleshooting and making repairs.



**Technician disconnecting power from filter console and labeling conductors**

Staff replaced upstream and downstream elevation differential pressure cells at the Sepulveda Feeder and Inglewood Feeder Interconnection Pressure Control Structure (PCS). The differential pressure transmitters are used by system operators to monitor the elevation throughout the distribution system and control system flow. The old sensors and valves were at the end of their functional life and exhibiting signs of failure. New isolation ball valves, bi-directional valves, and a manifold were also replaced to correct flow meter issues and increase elevation measurement accuracy. The upgrades will provide more usable and accurate information for system operators.



**Staff assembling new equipment at the Sepulveda Feeder and Inglewood Feeder Interconnection PCS**





## **Staff testing SCADA signals at the Sepulveda Feeder and Inglewood Feeder Interconnection PCS**

With 62 miles of open canal, consistent maintenance is required to keep the CRA clean and flowing efficiently. This month sand traps were cleaned. Sand traps are used to slow the flow of water and allow suspended debris to settle for later removal from the system. This process reduces wear on CRA pump components and related systems.



## **Removal of silt and debris from the sand trap at Eagle Mountain pumping plant**

With billions of gallons of water passing through annually, maintenance of the trash rack system at the Whitsett Intake pumping plant is critical. Divers are lowered into Lake Havasu to remove debris and quagga mussels that would eventually affect flow to the plant. Reduced inlet flows could potentially cause cavitation of the main pump units as well as issues with auxiliary systems such as circulating water. This maintenance is completed on a regular basis to ensure reliable operations.





**Staff performing maintenance on Intake trash racks**

In order to meet demand, some CRA components operate non-stop throughout the majority of the year. The circulating water systems in the pump plants provide a constant supply of cooling water to ensure that transformers, motors, and bearings can operate within normal temperatures in the hot desert environment. Secondary systems are used when primary pumps are removed from service for maintenance.



**Staff removing a circulating water pump for inspection and repair**

## Optimize Water Treatment and Distribution

The State Water Project target blend entering the Weymouth and Diemer plants and Lake Skinner was zero percent in February 2023.

Flow-weighted running annual averages for total dissolved solids from December 2021 through November 2022 for Metropolitan's treatment plants capable of receiving a blend of supplies from the State Water Project and the Colorado River Aqueduct were 599, 503, and 601 mg/L for the Weymouth, Diemer, and Skinner plants, respectively.

On February 28, staff held a 100 Percent Compliance Committee meeting to review the Skinner plant's performance and activities to ensure continued 100 percent compliance with primary drinking water regulations. Plant staff reviewed its regulatory compliance, operational performance, and optimization efforts. Metropolitan's 100 Percent Compliance Committee consists of managers from Water Treatment, Water Quality, Conveyance and Distribution, Engineering Services, and Control Systems. The committee meets regularly to review treatment plant and conveyance and distribution system performance and discuss compliance issues or operational modifications that may improve operations at Metropolitan facilities.

Staff replaced flocculator baffle boards at the Skinner plant. Flocculator baffle boards ensure that water does not move through the critical flocculation stage in the water treatment process too quickly. Using baffle boards ensures that the water remains in the flocculation basin long enough for small particles to gently mix and combine into larger floc, which can more readily settle out in the sedimentation process.



**Staff cutting new flocculator baffle boards before installation at the Skinner plant**

Staff performed annual preventative maintenance of an ozone contactor using a trailer-mounted vacuum at the Diemer plant. This work included removing quagga mussel shells, cleaning, and testing ozone diffusers. This work ensures that the ozone feed system functions properly.



**Staff vacuuming quagga mussel shells inside the ozone contactor (left) and using a trailer-mounted vacuum (right) at the Diemer plant**

Staff made repairs to the Finished Water Reservoir influent flow meter at the Skinner plant. Plant staff relies on flow to this meter to provide information on plant performance, because flowrate data is used to determine optimal chemical dosing values. Real-time flow information is crucial to ensuring that water quality goals are consistently met. Staff is required to adjust flows drastically to meet the changing demands of Metropolitan customers, sometimes multiple times each day. Expedient repairs such as this help keep the plant in compliance.



**Staff repairing the finished water reservoir influent flowmeter at the Skinner plant**



Staff continued work to install additional level monitors along the CRA for continuous remote monitoring of flows and elevations at key locations. An increased flow through the CRA requires increased monitoring of canal operations to ensure maximum capacity while mitigating the risk of overtopping the canal. Eleven new level monitors or gauging stations will be installed along the CRA to provide continuous flow data and to ensure reliable operations.



**Staff installing conduit (left) and the completed installation (right) along the top of the Hayfield Tunnel**

## **Improve Emergency Preparedness and Response**

Staff continued to reach out to external agencies and support various planning efforts throughout Metropolitan. On January 31, staff participated in an emergency exercise with the Long Beach Utilities Department (Water and Gas). During February, staff supported multiple orientation tours with the Orange County Fire Authority at the Diemer plant. Staff also supported Metropolitan's Local Hazard Mitigation Planning efforts by facilitating an outreach meeting with Southern California Edison. Staff also supported outreach efforts for multiple dam emergency action plans in San Bernardino County, California, and La Paz County, Arizona.

Mills plant staff participated in a "Stop the Bleed" training course. The course was taught in person with all plant personnel present. The training covered how to apply tourniquets to yourself and to someone else, packing wounds, and the urgency of time in a life-or-death situation. This training will allow all staff to use the provided bleeding control kits located in various locations around the treatment plant.



**Staff practicing tourniquet placement during "Stop the Bleed" training at the Mills plant**



**EMT Trainer demonstrating tourniquet placement during “Stop the Bleed” training at the Mills plant**

## **Actively Engage in Capital Project Planning and Execution**

Staff fabricated and installed a new fluoride injection feed line at the Weymouth plant. The new injection piping consists of PVC piping inside of a clear secondary containment PVC pipe, which feeds the new injection lance. Staff fabricated the new injection lance with a stainless-steel sleeve for additional support. This line provides redundancy and reliability to continue to feed fluoride to the treatment process during the Basins 5–8 Rehabilitation Project.



**Double containment piping (left) and new containment lance (right) for fluoride injection feed line at the Weymouth plant**



## Protect Source Water Quality

On February 23, an internal workshop was held with staff from various units and sections, to discuss the recent detection of a confirmed quagga mussel veliger (larval stage) at the Foothill PCS. On January 20, member agency managers and board members were updated, and based on information provided by Metropolitan staff, the California Department of Fish and Wildlife posted a summary of this discovery on its invasive species website on February 10. Discussion during the workshop focused on Metropolitan's monitoring program in the West Branch of the State Water Project, previous adult mussel discoveries in Pyramid Lake and Castaic Lake, possible control measures if needed, potential implications for raw water deliveries, and continued coordination on monitoring and control with the Department of Water Resources.

On February 27, Metropolitan's Colorado River Water Quality Issues group convened a meeting to discuss the status of active cleanup projects along the Colorado River, including the Moab Uranium Mill Tailings removal, Henderson perchlorate remediation, and PG&E Topock Compressor Station chromium-6 remediation. In addition, staff discussed the Colorado River Basin Salinity Control Program and related efforts to continue improving salinity control in the Colorado River.



**Staff examining water samples for quagga mussel veligers by cross-polarized microscopy**

## Prepare for Future Legislation and Regulation

On February 16, the State Water Resources Control Board announced a proposal to reduce the manganese notification level (NL) from 500 µg/L to 20 µg/L and the response level (RL) from 5,000 µg/L to 200 µg/L, based on the Division of Drinking Water's newly developed health protective concentration. NLs and RLs are not enforceable regulations; rather, they are state recommendations to provide customers and consumers with information about the presence of chemicals and health concerns associated with potential exposure through drinking water. Manganese is currently regulated by the U.S. Environmental Protection Agency (USEPA) and by California with a Secondary Maximum Contaminant Level of 50 µg/L, based on staining and taste considerations. The USEPA also recommends a one-day health advisory of 1,000 µg/L for acute manganese exposures for children and adults.

On February 13, staff participated in the 2023 California-Nevada Section of the American Water Works Association (AWWA) Water Utility Council planning workshop in Sacramento, to develop the AWWA legislation and regulation priorities to track during the next year. Updates and discussion topics included the state's financial assistance and water operator certification programs. Participation in such forums ensures that Metropolitan has the latest information on legislative and regulatory activities.

On February 3, the California Air Resources Board (CARB) released an unofficial draft of the Advanced Clean Fleets (ACF) Regulation prior to the 15-day public comment period. Metropolitan has over 500 diesel and gasoline trucks that will be affected by the ACF regulation. The latest draft includes a delay of the zero-emission vehicle (ZEV) purchase requirement from 2024 to 2030; however, Metropolitan would need to be on a ZEV purchase compliance schedule. In addition, the updated draft includes new exemptions for infrastructure construction or electrification delays. Staff is reviewing this latest draft and will provide comments to CARB, if needed.

On January 18, the USEPA and the Army Corps of Engineers published the final rule revising the definition of “waters of the United States” (WOTUS). Staff had previously commented in support of this rulemaking that restores the pre-2015 definition of WOTUS and codifies recent Supreme Court decisions. Staff will continue to monitor and engage on the issue, as USEPA still plans to build upon this “foundational rule” with a second rule designed to restore longstanding protections under the Clean Water Act.

On January 1, DDW issued a Drought and Conservation Technical Reporting Order (Order No. DDW\_HQ\_Drought2023\_001) (Order) requiring all community water systems and non-transient non-community schools to prepare drought and conservation reports beginning January 2023. Staff worked with the California Municipal Utilities Association (CMUA) last year to amend SB 552 to exclude Metropolitan’s small water systems from the need to conduct drought reporting; yet the Order still does so. Staff is conferring with DDW staff and CMUA to confirm whether Metropolitan’s Eagle, Gene, and Iron Mountain pumping plants fall under the Order.

## **Advance Education and Outreach Initiatives**

On January 31, the Water Quality Laboratory hosted a technical exchange with staff from the Korea Ministry of Environment, the Korea National Institute of Environmental Research, the Korea Water Resources Corporation, and two professors from local southern California universities. The discussion focused on Metropolitan's analytical methods for detecting and identifying cyanobacteria and cyanotoxins, along with control and treatment strategies. The visitors’ interest was spurred by Water Quality’s internationally recognized applied research and publications on cyanotoxins and other water quality issues.



**Technical exchange with Korean water industry professionals**

## **Support and Engage with Member Agencies on Technical Matters**

The La Verne Shops received a request from the Los Angeles County Public Works to manufacture several components to relocate a valve actuator at the San Gabriel Dam. The actuator operates a 48-inch hollow jet valve that was susceptible to water intrusion. After the components were manufactured, staff successfully installed and tested the valve actuator for proper operation.



**Original actuator in service (left) and new actuator assembly being lowered in place (right) at the San Gabriel Dam**



**Functional testing of the assembly (left) and final arrangement of the relocated actuator (right) at the San Gabriel Dam**



Monthly Update as of:

2/28/2023

<u>Reservoir</u>	<u>Current Storage</u>	<u>Percent of Capacity</u>
<b><i>Colorado River Basin</i></b>		
Lake Powell	5,324,000	22%
Lake Mead	7,469,000	29%
<b><i>DWR</i></b>		
Lake Oroville	2,576,043	72%
Shasta Lake	2,747,084	60%
San Luis Total	1,560,651	77%
San Luis CDWR	887,946	84%
Castaic Lake	189,998	59%
Silverwood Lake	68,725	92%
Lake Perris	91,531	70%
<b><i>MWD</i></b>		
DVL	487,471	60%
Lake Mathews	138,017	76%
Lake Skinner	25,677	58%



Hoover Dam



## Information Technology

### Project Highlights

#### LIMS TNI Implementation Project

The Information Technology Group has completed additional milestones for the Laboratory Information Management System (LIMS) project to increase compliance with requirements from The National Environment Laboratories Accreditation Conference Institute (TNI). The scope of the LIMS TNI Implementation project is to modify the existing Laboratory Information System's database, workflows, and other components to adhere to 2016 Rev 2.1 TNI requirements. An internal laboratory assessment based on TNI guidelines determined that the Water Quality laboratory's LIMS needs to be enhanced/revised in the following areas to ensure compliance with TNI's regulations and standards: data integrity; data traceability; quality control data; audit logging; inventory management; and process documentation. An agile project approach was adopted to fulfill project requirements faster through the release of specific functionality in small iterations. Within the past 3 months, the following project milestones have been completed:

- Support Equipment Traceability
  - LIMS has been successfully configured to accommodate selection and data storage for supporting equipment used during laboratory analyses such as thermometers, balances, etc.
- Quality Control Calculations
  - Detailed reporting and data exports have been created for analytical Method Detection Limits (MDL) in accordance with requirements.

The last project sprint "Configure Analytical Quality Control Charts" is in progress.

#### ServiceNow Upgrade

The Information Technology Group implemented its new IT Service Management (ITSM) enterprise system called ServiceNow in early 2021. It has provided a self-service customer support portal to all Metropolitan employees. The Information Technology Group uses this system to monitor and track all IT incidents, service requests, and changes. ServiceNow is also used for IT operations real-time dashboard and knowledge management.

Recently, IT underwent a successful six-week project to upgrade ServiceNow, which brings the ServiceNow enterprise platform to the latest release. This is the second upgrade successfully completed by the Information Technology team using the standard guidelines provided by the ServiceNow vendor. A complete set of regression test scenarios were executed covering all modules of ServiceNow ITSM solution in a non-production instance. According to ServiceNow, several improvements were incorporated in this release including artificial intelligence search, service catalog workflows, and automated test framework.

## Real Property

### Highlights

#### **Foster staff training and development.**

Staff attended a webinar sponsored by the California Lawyers Association: Negotiations Ethics - Winning Without Selling Your Soul, which presented negotiation scenarios and solutions.

Staff attended a Metropolitan sponsored Adobe Forms workshop, which provided instructions on how to create fill-in forms from scratch.

Staff served as a course coordinator for IRWA Course 215 - Right of Way Acquisition for Pipeline Projects, which provided education related to acquisition for pipeline projects.

### **Core Business: Real Property Acquisition, Management, and Revenue Enhancement**

#### **Efficiently maintain and operate assets not related to the treatment and distribution of water.**

The Diamond Valley Lake Marina opened the Wildflower Trail for visitors to enjoy a walk on the 1.3 mile trail loop. While the full bloom has not arrived, staff expects this year's bloom to be bigger than the blooms in recent years.



Staff completed urgent repair work to replace leaking section of 8" fire line piping within the fire pump room at MWD Headquarters building. This repair was critical for maintaining LA City fire water feed to the underground tank which feeds the buildings entire fire sprinkler water distribution system.



**Before**



**After**

## **District Housing Maintenance and Management.**

Desert staff completed maintenance request that included new dishwashers, repair of door locks, repair furnaces, water heater replacements, plumbing repairs and assessed electrical issues.

Pre-occupancy repairs on one house were completed this reporting period. Repairs to this house consisted of interior/exterior painting, new windows, new flooring, new kitchen cabinets/countertops, new appliances, and a full bathroom remodel.



**House 109-G Before**



**House 109-G After**

The Desert Housing and Recreation Interim Action Plan (DHRIAP) has been implemented and continues to work on carport installations at Gene, and preparations for backyard shade structure installations. The resurfacing of the Iron Mountain multi-purpose sport court has been completed. In addition, 14 residential load centers were replaced or repaired, and 23 garage sub-panels were replaced at houses located at the Gene village.





**Before and After Carport Installation at House 47-G**



**Iron Mountain Sport Court - Before**



**Iron Mountain Sport Court - After**

## Security

### Project Highlights

#### Security and Emergency Response

Spillway openings are connected to storm drains and other local interagency wastewater systems and can be susceptible to casual trespass opportunities and encroachment. Securing these potential security vulnerabilities mitigates against the tampering with public drinking water substructures and pipelines.

Metropolitan security specialists worked with staff from the Western Region Conveyance and Distribution Teams (Valley, Los Angeles, and La Verne) to rapidly identify, assess, and reinforce dozens of spillway openings. Staff presented findings to management and immediately addressed the highest-risk infrastructure vulnerabilities by taking the following actions:

- Welding substructure hatches
- Affixing permanent stainless-steel gratings
- Reinforcing door hasps
- Adding through-hardened steel chains with high-security padlocks

These additional physical improvements increase both public safety and the integrity of Metropolitan's distribution system.



**Metropolitan's Security Specialists partnered with Western Region C&D staff to mitigate spillway vulnerabilities**

## **Employee Readiness for All Hazards and Emergencies**

Ongoing security exercises and realistic training rehearsals are key components in effective and reliable security planning. Members of Metropolitan's Security Unit conducted a full-scale simulated security lockdown drill at the Metropolitan Headquarters Building. Staff validated recent security system upgrades, the public address system, security procedures, and access control equipment. Participants included:

- Securitas contract security personnel
- Security contract technicians
- Staff from Metropolitan's Construction Management and Engineering Services Group

The drill kicked off with a safety toolbox included a detailed verbal briefing and took one hour to complete. An informal debrief was immediately conducted, and invaluable written feedback gathered with specific recommendations to improve equipment shortfalls, emergency response gaps, and additional training needs.



**Members of Metropolitan's Security Unit conducted a full-scale simulated security lockdown drill**

# Finance and Administration



## Finance

### Maintain Strong Financial Position

**Provide timely and discerning financial analyses, planning, and management to ensure that forecasted revenues are sufficient to meet planned expenses and provide a prudent level of reserves consistent with board policy.**

**Manage risk to protect Metropolitan's assets against exposure to loss.**

The Risk Management Unit completed 36 incident reports communicating instances of Metropolitan property damage, liability, workplace injuries, regulatory visits, and spills.

Risk Management completed 54 risk assessments on contracts, including professional service agreements, construction contracts, entry permits, special events, and film permits.

### Business Continuity

**Facilitate district-wide planning and training to prepare employees and managers to effectively carry out critical roles and recover mission essential functions thus ensuring continuity of operations and resiliency in the event of a disaster.**

**Manage the Business Continuity Management Program in accordance with Operating Policy A-06.**

- Continued to deliver training to planning coordinators across the district on how to update business continuity plans in the Fusion software.
- Participated in planning meetings to develop a Local Hazard Mitigation Plan in accordance with FEMA requirements that would enable Metropolitan to seek grant funding for projects.
- Continued conducting business continuity tabletop exercises focused on a loss of IT systems scenario in an ongoing effort to prepare for continuity of operations following a cyberattack.

### Financial Management

**Manage Metropolitan's finances in an ethical and transparent manner and provide consistent, clear, and timely financial reporting. Update Metropolitan's capital financing plans and work with rating agencies and investors to communicate Metropolitan's financial needs, strategies, and capabilities, thus ensuring that Metropolitan has cost effective access to capital markets and the ability to finance ongoing future needs. In addition, actively manage Metropolitan's short-term investment portfolio to meet ongoing liquidity needs and changing economic environments.**

**Record and report the financial activities of Metropolitan in a timely, accurate, and transparent manner to the Board, executive management, member agencies, and the financial community.**

- Water Transactions for January 2023 (for water delivered in November 2022) totaled 112.4 thousand acre-feet (TAF), which was 45.9 TAF lower than the budget of 158.3 TAF and translates to \$105.5 million in receipts for January 2023, which was \$36.2 million lower than budget of \$141.7 million.
- Year-to-date water transactions through January 2023 (for water delivered in May 2022 through November 2022) were 1,005.2 TAF, which was 39.2 TAF lower than the budget of 1,044.4 TAF. Year-to-date water receipts through January 2023 were \$936.2 million, which was \$56.3 million lower than the budget of \$992.5 million.



# Finance and Administration

(continued)

- In January 2023, Accounts Payable processed approximately 3,200 vendor invoices for payment and took advantage of about \$1,400 in discounts.

## **Manage investor relations to ensure clear communications, accuracy of information, and integrity.**

Provided updates to Metropolitan's website and Investor Relations portal related to various financial documents and reports and capital investment plan updates.

## **Update capital financing plans and work with rating agencies and investors to communicate financial needs and capabilities, ensure cost-effective access to capital markets, and maintain long-term bond ratings of AA or better.**

Initiated an internal update of Metropolitan's Appendix A document for a bond financing anticipated in the late Spring 2023. Appointed an underwriting team to commence preparation of bond documents and processes to support the upcoming bond sale.

## **Prudently manage the investment of Metropolitan's funds in accordance with policy guidelines and liquidity considerations.**

As of January 31, 2023, Metropolitan's investment portfolio balance was \$1.2 billion; in January 2023, Metropolitan's portfolio managers executed 29 trades.

In January 2023, Treasury staff processed 996 disbursements by check, 22 disbursements by Automated Clearing House (ACH), and 121 disbursements by wire transfer. Treasury staff also processed 82 receipts by check, 42 receipts by ACH, and 52 receipts by incoming wires and bank transfers.

In addition, there were 7,942 P-One Card transactions, totaling \$1.1M, recorded in the January bank statement.

## Administrative Services

### Accomplishments

#### Pure Water Southern California Program

During the month of February, the Professional Services Contracting Team (PSCT) completed a crucial acquisition in support of the Pure Water Southern California Program. **Request for Proposal (RFP) No. 133—Pure Water California Engineering Design Services for Conveyance Reaches 1 & 2** was awarded to obtain the services of experienced and qualified consultants to provide engineering design services for the Pure Water Southern California Conveyance Reach No. 1 through the City of Carson and Reach No. 2 through the cities of Long Beach and Lakewood. This project enables Metropolitan and the Los Angeles County Sanitation Districts to explore the potential of a large-scale recycled water infrastructure system to beneficially reuse water currently discharged to the Pacific Ocean.

#### Inventory Management Team Donation

One of Investment Recovery's responsibilities is to assist with donating equipment that has no further use and is considered salvage at Metropolitan. As identified in Operation Policy F-02 Disposal of Surplus Personal Property, Metropolitan surplus personal property can be disposed of by donation with the approval of the General Counsel.

Last month, Metropolitan approved the donation of turbidimeters to Casitas Municipal Water District. Turbidimeters are used to measure the clarity of the water in Nephelometric Turbidity Units and provide a real time reading that can be recorded and transmitted. It is a requirement for all public water utilities to measure, record, and report the clarity of the water in accordance with EPA regulations and the State Water Resource Control Board. The units donated are a few generations old and are no longer used at Metropolitan's facilities. While the turbidimeters have no further use at Metropolitan, they will greatly benefit the Casitas Municipal Water District. The donation will help Casitas Municipal Water District staff secure spare parts to continue their organization's water operations.

#### E-Waste Yearly Collection

One of Investment Recovery's core responsibilities is to collect electronic waste from all facilities across the district, as well as to weigh, document, and report yearly collections with the California Department of Toxic Substances Control. It is important to collect e-waste because it keeps electronics out of landfills, which can contaminate the soil and waterways. Collecting e-waste also gives the equipment the opportunity to be reused or repurposed, which decreases the demand for new materials helping to conserve natural resources. Metropolitan and the team at Investment Recovery are doing their part of environmental stewardship by inspecting electronic waste as it comes in and determining whether the equipment can be sold via auction or scrapped via e-waste. In 2022, Investment Recovery collected **31,500 lbs.** of electronic waste and disposed of it via e-waste collection companies.

## Human Resources

### HR Priorities

**Partner with Metropolitan leadership to support learning, development, and adaptive workforce planning initiatives.**

In February, 110 Metropolitan employees attended virtually facilitated classes, including Avoiding Burnout, Excel Charts & Graphs, Conflict Management, Advanced PowerPoint, Intro to SharePoint, and Communication Skills.

LinkedIn Learning, Metropolitan's online e-learning content platform, was accessed for such topics as Problem Solving Techniques, Negotiations Foundations, Leading Projects, and Delegating Tasks.

**Seek diverse, high-quality talent, and establish partnerships to discover additional outreach opportunities that aid in staffing positions.**

Recruitment successfully filled 22 positions for February. Recruitment received 30 new staffing requisitions resulting in 211 positions currently in recruitment.

### HR Core Business: Provide Excellent Human Resources Services

**Objective #1: Administer all HR services with efficiency and a focus on customer service excellence, consistency, and flexibility.**

The HR Benefits Unit is working with legal staff, Empower, and Hyas Group on details of the SECURE Act 2.0 to develop a chart of all optional provisions available for the 401(k) and 457(b) plans to provide to the Deferred Compensation Advisory Committee (DCAC) for review and discussion. Further research and meetings will be required to determine which optional provisions will be beneficial for Metropolitan to adopt. Once final decisions are made and provisions are adopted, a communication campaign and financial education plan will be developed and deployed to all active employees and plan participants.

The Employee Leave page is currently being revised to include a new Employee Leave Guide to summarize the provisions of the various Administrative Codes (6227, 6228, 6229, 6231, 6246, and 6530) approved by the Board on December 13, 2022. This guide will help educate employees about their leave rights, accruals, and options; and provide information on the leave donation and other benefit programs available to assist them with their leave of absence and transition back to work.

### HR Core Business: Comply with Employment Laws and Regulations

**Objective #1: Effectively administer all Human Resources policies, programs, and practices in compliance with applicable federal and state laws and Metropolitan's Administrative Code, Operating Policies, and Memorandum of Understanding.**

The HR Benefits Unit worked with CalPERS Compliance staff to develop two new Board Resolutions to ensure the value of reporting employer paid member contributions (EPMC) continue to be administered according to the current Memorandum of Understandings (MOUs) with all Bargaining Units and Administrative Code 6521. This request of updated Resolutions from CalPERS is following the EPMC Audit (Job No 3P20-049) conducted in late 2021 of 60 agencies randomly selected by PERS. Human Resources staff is currently working with legal staff on the Board Action Letter and presentation for the March 14 board meeting to request approval of the new Resolutions required to replace Resolution 8740 for Unrepresented employees and 9129 for Represented employees.

# Finance and Administration

(continued)

Following approval of the Administrative Codes affecting Leave Administration, the Family and Medical Leave application and HR Procedure Guidelines have been updated to ensure compliance with the new state laws under AB 1041 and AB 1949 and a separate Military Leave application developed to assist employees with their leave requests and decisions regarding pay and benefits while on an approved leave of absence. The HR Benefits unit is currently working with legal staff, Empower, and Hyas Group on the details of the SECURE Act 2.0 to ensure that all mandatory provisions affecting Metropolitan's 401(k) and 457(b) plans are implemented by the required deadline dates set by this new federal bill to ensure continued compliance.

HR Benefits and HRIS are working together to create and issue the 2022 calendar year 1095-C employee statements on or before March 2 as required by the IRS to meet the requirements of the Affordable Care Act (ACA). A memo to all employees explaining the reason and requirements for the statements, and encouraging employees to go green by opting in to receive their statements electronically will be emailed to all employees in February.

In February, six new workers' compensation claims were received. Nine employees remain off work because of an industrial injury or illness. This reflects Metropolitan's effort to accommodate injured workers, while enabling them to be productive and on the job.

In addition, staff is collaborating with other Metropolitan stakeholders to implement a new Incident Reporting and Case Management System designed by Ventiv Technology. Staff continues to work closely with our Workers' Compensation Third-Party Administrator, TRISTAR Risk Management.

Activities of the Medical Screening Unit are summarized as follows for February:

- Coordinated two medical Medvan visits (DMV, respirator exams, and hearing tests) at Lake Skinner and Lake Mathews.
- Facilitated return-to-work from leave for four employees.
- Addressed 30 accommodation issues, referrals, and follow ups with Shaw Consulting Group.

HR Metrics	June 2022	February 2023	Prior Month January 2023
<b>Headcount</b>			
Regular Employees	1,762	1758	1,786
Temporary Employees	37	17	19
Interns	2	1	1
Recurrents	18	18	18
Annuitants	19	25	22

	February 2023	January 2023
<b>Number of Recruitments in Progress (Includes Temps and Intern positions)</b>	211	203
<b>Number of New Staffing Requisitions</b>	30	11
	February 2023	January 2022
<b>Number of Job Audit Requests in Progress</b>	8	7
<b>Number of Completed/Closed Job Audits</b>	2	0
<b>Number of New Job Audit Requests</b>	3	1



# Finance and Administration

(continued)

Transactions Current Month and Fiscal YTD (includes current month)			
<u>External Hires</u>	<u>FY 21/22 Totals</u>	<u>February 2023</u>	<u>FISCAL YTD</u>
Regular Employees	82	12	79
Temporary Employees	36	3	13
Interns	4	0	0
Internal Promotions	70	2	41
Management Requested Promotions	152	20	97
Retirements/Separations (regular employees)	127	40	82
Employee-Requested Transfers	15	1	12

## Departures

Last	First Name	Classification	Eff Date	Reason	Group
Bermudez-Bracy	Carmen	Pr Admin Analyst (C)	12/24/2022	Retirement - Service	DIVERSITY,EQUITY& INCLUSION
Norberg	Neil	Pr Engineering Technician	12/24/2022	Retirement - Service	ENGINEERING SERVICES GROUP
Runyan Jr.	Harold	O&M Tech IV	12/23/2022	Retirement - Service	WATER SYSTEM OPERATIONS GROUP
Castillo	Julio	Unit Mgr-Engineering Services	12/31/2022	Retirement - Service	ENGINEERING SERVICES GROUP
De Leon	Juan	Resource Specialist	12/31/2022	Retirement - Service	WATER RESOURCE MANAGEMENT GRP
Donhoff	Kevin	Section Mgr-Water Resource Mgt	12/31/2022	Retirement - Service	WATER RESOURCE MANAGEMENT GRP
Hamm	Brad	Sr Engineering Technician	12/31/2022	Retirement - Service	ENGINEERING SERVICES GROUP
Kalbacher	Julie	Pr Public Affairs Rep	12/31/2022	Retirement - Service	EXTERNAL AFFAIRS
Lem	Stephen	Human Resources Section Mgr	12/31/2022	Retirement - Service	HUMAN RESOURCES GROUP
Masannat	Clara	Pr Admin Analyst (C)	12/31/2022	Retirement - Service	HUMAN RESOURCES GROUP
McDonnell	Christopher	Sr Planner Scheduler	12/30/2022	Retirement - Service	WATER SYSTEM OPERATIONS GROUP
McMillan	Jacquelyn	Pr Government & Region Aff Rep(C)	1/7/2023	Retirement - Service	EXTERNAL AFFAIRS
Radhakrishnan	Suresh	HR Strategic Partner	12/31/2022	Retirement - Service	HUMAN RESOURCES GROUP
Schlang	Setha	Sr Dpty General Counsel (C)	12/31/2022	Retirement - Service	GENERAL COUNSEL

# Finance and Administration

(continued)

## Departures (continued)

Last	First Name	Classification	Eff Date	Reason	Group
Shraibati	Lilly	Group Manager-Real Property	12/31/2022	Retirement - Service	REAL PROPERTY
Hamawi	Izzat	Sr Engineer	12/31/2022	Retirement - Service	ENGINEERING SERVICES GROUP
Popick	Leonard	Occ Safety & Health Spec	12/31/2022	Retirement - Service	WATER SYSTEM OPERATIONS GROUP
Sells	Yley	Planner Scheduler	12/30/2022	Retirement - Service	WATER SYSTEM OPERATIONS GROUP
Arakawa	Stephen	Group Manager-Bay Delta Intivs	12/31/2022	Retirement - Service	BAY DELTA INITIATIVES
Bentley	Donald	Engineer	12/31/2022	Retirement - Service	WATER RESOURCE MANAGEMENT GRP
Davenport	Benny	Team Manager IV	12/31/2022	Retirement - Service	WATER SYSTEM OPERATIONS GROUP
DesRoches	Trudi	Unit Mgr-Water Treatment Plant	12/31/2022	Retirement - Service	WATER SYSTEM OPERATIONS GROUP
Jalali	Mehdi	Unit Mgr-Construction Services	12/31/2022	Retirement - Service	WATER SYSTEM OPERATIONS GROUP
Ma	Stephen	Team Mgr-Operations App Svcs	12/31/2022	Retirement - Service	INFORMATION TECHNOLOGY GROUP
Petrassi	Domenico	IT Support Analyst II	12/31/2022	Retirement - Service	INFORMATION TECHNOLOGY GROUP
Ramirez	Jose	Sr IT Infrastructure Adminstr	12/31/2022	Retirement - Service	INFORMATION TECHNOLOGY GROUP
Reyes	Christina Mae	Sr Accounting Tech	12/31/2022	Retirement - Service	FINANCE GROUP
Siewert	Barbara	Sr Recruitment Specialist (C)	12/31/2022	Retirement - Service	HUMAN RESOURCES GROUP
Tonsick	John	Asst General Auditor	1/4/2023	Retirement - Service	OFFICE OF THE GENERAL AUDITOR
Wagner	Harold	EHS Field Specialist III (C)	12/31/2022	Retirement - Service	WATER SYSTEM OPERATIONS GROUP
Cortez	Manuel	Pr Land Surveyor	12/31/2022	Retirement - Service	ENGINEERING SERVICES GROUP

# Finance and Administration

(continued)

## Departures (continued)

Last	First Name	Classification	Eff Date	Reason	Group
Goodman	Mark	Sr Engineer	12/31/2022	Retirement - Service	WATER SYSTEM OPERATIONS GROUP
Hackett-Cole	Veronica	Sr Admin Analyst (C)	12/31/2022	Retirement - Service	EXTERNAL AFFAIRS
Holland	Leonard	Pr Engineering Technician	12/31/2022	Retirement - Service	ENGINEERING SERVICES GROUP
McLain	Susan	Team Manager II	12/31/2022	Retirement - Service	WATER SYSTEM OPERATIONS GROUP
Mohr	Jay	Team Mgr-IT Telecommunication	12/31/2022	Retirement - Service	INFORMATION TECHNOLOGY GROUP
Okano	Florence	Admin Assistant III	12/31/2022	Retirement - Service	ENGINEERING SERVICES GROUP
Veale	Barry	Wtr Trtment Plant Operator III	12/29/2022	Retirement - Service	WATER SYSTEM OPERATIONS GROUP
Yamasaki	Brent	Group Manager-Water System Ops	12/31/2022	Retirement - Service	WATER SYSTEM OPERATIONS GROUP
Parker	Dawn	Pr Project Controls Specialist	1/7/2023	Deceased	ENGINEERING SERVICES GROUP

## Diversity, Equity and Inclusion

### **Tribal Outreach & Engagement**

DEI staff met with the Soboba Tribe environmental group staff. The in-person meeting, held at the Soboba reservation, covered a discussion of workforce development as well as apprenticeship opportunities for Soboba tribal members. Parties agree that the next step would be a job tour of Metropolitan facilities, focusing particularly how certain careers function within the Metropolitan water systems operation. This provides a way for tribal participants to gain an understanding of the career field.

### **Business Outreach & Community Engagement**

The Metropolitan Water District of Southern California hosted the MetWorks Industry Day In-Person event at the Carson Event Center on February 2, 2023. Over 400 attendees and Primes consultants attended the event to provide the construction and consulting community an opportunity to foster partnerships while becoming informed of potential upcoming contracting opportunities with our Pure Water Southern California reuse program and our drought sustainability projects, which are currently designated to use a combination of Alternative Project Delivery and traditional design-bid-build approaches.

### **Equity in Infrastructure Pledge (EIP)**

Metropolitan, in conjunction with an organization called LAVA, convened several different stakeholders and community-based organizations to collectively envision how to advance contracting opportunities to historically underserved businesses. The forum, called “Dream Big,” was hosted by Metropolitan and featured representatives from CalTrans, The Port of Long Beach (POLB) and the Governor’s Office of Business and Economic Development (GO-Biz). Afterward, Metropolitan and POLB leadership met to discuss details of a potential MOU between both EIP signatory organizations.







## External Affairs

### Highlights

Vice Chair Repenning, Director Erdman, and GM Hagekhalil welcomed more than 200 prospective contractors and consultants at the MetWorks Industry Day, where businesses learned about Metropolitan's 10-year, \$3.2 billion capital investment program, project labor agreements, and initiatives to increase employment and contractor opportunities. (February 2)

GM Hagekhalil, the keynote speaker at a Walton Family Foundation event, spoke about how Metropolitan is using a One Water approach to address both climate resilience and mitigation. Also in attendance was Natural Resource Secretary Crowfoot. (February 4)

Metropolitan sponsored the Municipal Water District of Orange County's Public Policy Dinner honoring the life of MWDOC General Manager Rob Hunter. Chair Ortega, Vice-Chair Goldberg, Vice-Chair Camacho, Directors Dennstedt, Dick, Luna and Lefevre, GM Adel Hagekhalil, and staff attended. (February 9)

Bureau of Reclamation Commissioner Touton and Deputy Commissioner Palumbo met with directors and staff at the board retreat to talk about the cooperation and action needed to address the many challenges facing the West. (February 13)

GM Hagekhalil spoke at the NACWA conference and shared his vision of how the One Water approach can be operationalized for improved water resiliency. (February 16)

GM Hagekhalil spoke at the "Dream Big" event, which focused on small business inclusion as a key part of Metropolitan's DEI priorities. (February 23)

Metropolitan sponsored and Chair Ortega, Director Dick, EO/AGM Upadhyay and Colorado River Resource Manager Hasencamp were speakers at the Urban Water Institute Spring conference. (February 22-24)



Chair Ortega joined with more than 100 local leaders and representatives from the faith community, business, and labor at the Groundswell Water Justice Summit to demand water justice and more support for small water systems, many of which serve low-income communities. (February 24)



*Top Photo: CFO Kasaine, Chief Engineer Bednarski, Vice Chair Repenning, Dir. Erdman, DEI Chief Thomas, and former Dir. Trevino at MetWorks. Middle Photo: GM Hagekhalil with CA Natural Resources Secretary Crowfoot. Bottom Photo: GM Hagekhalil with Reclamation Commissioner Touton and Deputy Commissioner Palumbo.*

## Legislative Services

### Federal

Representatives Calvert (R-Corona), and Napolitano (D- El Monte) sponsored a briefing for Congressional staff on California's perspective on the Colorado River. Metropolitan participated in the briefing along with staff from the Colorado River Board of California and Imperial Irrigation District. (February 27)

Chair Ortega, Vice Chair Repenning, Directors Cordero, Garza, Jung, Luna, and Miller, GM Hagekhalil, and AGM/CEAO Zinke traveled to Washington, D.C., and met with members of Congress and the Biden Administration to discuss California's Colorado River proposal, progress on Pure Water Southern California, and water supply conditions. Meetings were held with Senators Feinstein and Padilla, Representatives Calvert, Napolitano, and Bentz (R-Oregon), the White House Council on Environmental Quality, EPA Office of Water, and the Bureau of Reclamation. Several directors including Directors Fellow and Peterson also attended the ACWA DC conference, which took place the same week. (February 28)



*Metropolitan delegation at Congressional briefing*

### State

The Senate and Assembly budget committees hosted their first hearings of the Governor's proposed budget and heard from the LAO and Dept of Finance that the state could see a potential budget shortfall of up to \$60 billion.

Metropolitan staff is analyzing newly introduced legislative proposals including those dealing with water rights, removal of non-functional turf, Delta conveyance, and measures for climate resilience.

### Local

Metropolitan staff accompanied Chair Ortega, who was the featured speaker at the San Gabriel Valley Water Association. He spoke to past pioneering and ongoing resiliency efforts of Valley water leaders and the importance of continued similar efforts to meet today's challenges. (February 8)

Board Secretary Fong-Sakai and Director Smith attended, and Metropolitan sponsored, the San Diego Chamber of Commerce Anniversary event. (February 9)

Directors Jung, Luna, and Quinn and GM Hagekhalil attended, and Metropolitan sponsored the Los Angeles Area Chamber of Commerce's 2023 Inaugural, which recognized civic and business leadership. (February 16)

Metropolitan staff presented, monitored, and/or participated in 64 webinars, virtual meetings and events with community organizations, trade associations, and local officials on water-specific topics.

## Media and Communications

Hosted media availability at WRM Resource Specialist Guerrero's home to share her experience installing water-efficient landscaping. KABC-TV Channel 7, KTLA-TV Channel 5, KCBS-TV/KCAL-TV Channel 2/9, and Spectrum covered the media event. GM Hagekhalil and Director Faessel attended.



*Media Event on Landscape Transformation from Lawns to Native Gardens*

Coordinated interviews with CNN, USA Today, KPCC's AirTalk with Larry Mantle,

KTLA-TV Channel 5, KABC7 Los Angeles, Fox 10 Phoenix, ABC 10 Sacramento, NBC 3 Las Vegas, ABC 13 Las Vegas, and Stateline with GM Hagekhalil, EO/AGM Upadhyay, and Colorado River Resources Manager Hasencamp regarding the two water use modeling proposals from California and the other six Basin States.

Arranged an interview between Insider news climate reporter Catherine Boudreau, Colorado River Resources Manager Hasencamp, and WSO Asst. Group Manager Jontry on how dropping lake levels at Mead and Powell may affect hydropower production and electricity users.

Coordinated an interview with Spectrum's Alex Cohen and Chair Ortega on leadership, drought, and other issues.

Set up an interview between Pepperdine student Allison Levens and WRM's Resource Planning Team Manager Polyzos regarding drought conditions.



Arranged a live interview with Fox Weather and Colorado River Resources Manager Hasencamp about Lake Mead's conditions, the effects of climate change, and the impact of this winter's wet weather.

Coordinated an interview with Estuary News writer Michael Adamson and Bay Delta Initiatives Engineer Ryan about restoration projects on Bouldin Island.

Arranged a meeting with LA Times editorial board, GM Hagekhalil, and Natural Resources Secretary Crowfoot on the Colorado River and the competing SEIS proposals from California and the six Basin States.

Hosted a tour of Lake Mathews and an interview with NBC national reporter Steve Patterson and Colorado River Resources Manager Hasencamp on Colorado River developments and climate change.

Coordinated an interview with KNX-AM 1070 and Sustainability, Resiliency and Innovations Chief Crosson on the opening of the wildflower trail at Diamond Valley Lake.

Arranged an interview between CalMatters reporter Alastair Bland and Bay-Delta Initiative Manager Hawk regarding Sites Reservoir.

Set up a tour of Pure Water Southern California with Wall Street Journal reporter Alex Ossola for a story about recycled water for the Future of Everything podcast, and interviews with External Affairs' Team Manager Soni and Water System Operations' Asst Group Manager Collins.



*Wildflowers at Diamond Valley Lake*



## Press Releases

- State Water Project allocation increases
- GM statement for California agencies press release on Colorado River proposed modeling framework
- New directors representing the Municipal Water District of Orange County and Central Basin and West Basin municipal water districts
- Wildflower trail at Diamond Valley Lake
- New General Auditor Scott Suzuki

## Creative Design

Filmed beauty influencer Josie Maran for the next series of the social media influencer campaign to promote conservation.

Filmed a smelt release research project on Metropolitan islands in the Sacramento-San Joaquin Delta.

Completed a new training video on water quality sampling.

Created video recaps of the facility-naming event at Lake Mathews for former board Chairwoman Lois Krieger and former Director Don Galleano, and of the Project Labor Agreement signing ceremony.

Created a Super Bowl-themed, Valentine's Day, and a series of animated rainy-day digital messaging promoting water conservation and directing viewers to bewaterwise.com.



Videographers were on site in the Delta as researchers released hatchery Delta Smelt in cages in a pond on Bouldin Island as part of a pilot project between UC Davis and Metropolitan.



## Website

Added a new home page section on the GM strategic priorities, posted the Annual Achievement Report and accompanying scorecard, and completed the final conversion of the website's content management system.



Added English, Spanish, and Chinese language flyers on non-functional turf to the bewaterwise.com toolkit.

Received nearly 96,000 views on mwdh2o.com, with careers, job listings, and board pages among the most visited.

## Social Media

Collaborated with Black Employees Association on social media series to commemorate leadership and legacy during Black History Month.

Received more than 20 million impressions on social media platforms with more than 120,000 clicks to bewaterwise.com.

## Public Outreach and Member Services

Conducted one director inspection trip to the Lower Colorado River. (February 24–26)

Participated on Emergency Preparedness Summit Drought Panel hosted by California Special District Association, USC, and So Cal Edison. (February 24)

Conducted community outreach activities on the following projects:

- Provided information in Fontana and Rancho Cucamonga on the Etiwanda Pipeline North Lining Repair
- Briefed LA City Council District 15 staff on Second Lower Feeder PCCP Rehabilitation
- Updated residents of Rolling Hills Estates on the Second Lower Feeder PCCP Rehabilitation
- Notified residents and businesses of the Santiago Lateral and Lower Feeder Shutdowns

Convened meetings of the Member Agency managers and Member Agency public information officers to discuss water supply conditions and Colorado River issues.

Pure Water Southern California Activities:

- Resumed public in-person tours of the Demonstration Plant, which are offered in English and Spanish
- Briefed Rotary Club of South Bay in Torrance (February 8), Marathon Petroleum Corp. (February 16), and staff from Phillips 66 Refinery (February 21)
- Updated Cerritos city officials on the proposed conveyance system (February 14)
- Participated in a regional recycled water planning meeting with Council for Watershed Health to coordinate recycled water communications (February 28)

## Education and Community Relations

Metropolitan staff interacted with nearly 2,400 teachers, students, and parents through in-person and online field trips, meetings, and customized ZOOM class presentations.

Student teams submitted their first set of assignments for Water Engineering 4 Good, Metropolitan's new online STEAM (Science, Technology, Engineering, Arts, and Mathematics) program for middle and high school students.



A series of social media posts ran throughout Black History Month and featured Metropolitan employees sharing their personal perspectives on legacy.



## Community Partnering and Sponsorship Program



Sponsored and hosted an exhibit booth at the Tarzana Native Plant Fair and provided water conservation resources, rebate information, and kids' activities to approximately 600 attendees. (February 18)

Five water conservation and education projects were supported this month by the Community Partnering Program:

- Cucamonga Valley Water District Earth Day & Open House
- Venice Community Foundation Tabor Court Native Plant Garden
- Elsinore Valley MWD Splash into Spring Community Water Festival
- Council for Watershed Health Landscaping Lightly 2023 Calendar
- Niguel Botanical Preserve Earth Day 2023

# Sustainability, Resiliency and Innovation



## Sustainability, Resiliency, Innovation and Environmental Planning

### SRI Core Activities

#### Two-Day Board Retreat

The Chief SRI Officer participated in a two-day board retreat in Temecula. The Retreat kicked off a board process to build understanding and agreement about water supply resilience, climate impacts, risks, and vulnerabilities facing the Metropolitan's water system, its member agencies, and the communities we serve. SRI's role was to bring in the facilitators (experts in climate adaptation) and set the stage for deepening our understanding of climate vulnerabilities.



#### SRI Council Meeting

The SRI Office hosted its second monthly meeting of the SRI Council, whose 17 members represent each of Metropolitan's groups. The council discussed SRI priorities for each group and opportunities for the SRI Office to support these group initiatives. The SRI Council also discussed the ongoing planning timelines for Metropolitan's Climate Vulnerability Assessment and district-wide SRI Strategy.

#### Zero Electric Fleet Transition

- **ZEV Executive Task Force:** The SRI Office conducted its monthly meeting to coordinate Metropolitan's transition of its fleet to ZEVs. Metropolitan-wide groups and sections discussed a vehicle replacement strategy, infrastructure build-out, upcoming regulations, and potential financing options.
- **Zero Electric Vehicle First Directive Zero:** The SRI Office, WSO Group, and Administrative Services Section completed a draft directive which would require Metropolitan to purchase ZEVs whenever operationally feasible.

# Sustainability, Resiliency and Innovation

(continued)

- **Southern California Edison (SCE) Transportation Electrification Advisory Services:** SRI, WSO, and Engineering Services Groups met with SCE to discuss this program which offers customers advisory services in the early stages of planning.
- **LADWP ZEV Fleet Procurement Meeting:** The SRI Office, WSO Safety and Regulatory staff, and Administrative Services Section met with LADWP's Executive and Senior Fleet Managers to discuss how they have successfully been able to use cooperative purchasing agreements to position themselves to be first in line for procuring electric vehicles. Procurement of ZEVs has been extremely competitive; therefore, use of these types of agreements has been essential to being positioned to purchase the vehicles as manufacturer's announce release dates. Administrative Services is exploring options on how to secure cooperative agreements that are needed to position Metropolitan for ZEV purchase.
- **Low Carbon Fuel Standard (LCFS) Program:** SRI, WSO, and ESG had meetings with the Los Angeles County Sanitations Districts and an LCFS aggregator to learn more about implementing an LCFS program that would track and generate credits for reductions in CO2 levels. SRI is gathering additional information for the aggregator to see whether any current benefit exists.

## General Manager Listening Session

The SRI Office participated with External Affairs in the *GM Listening Session: Development of Metropolitan's Sustainability, Resiliency and Innovation* on February 9. Both Metropolitan and external participants attended as our General Manager, Adel Hagekhalil, and Chief SRI Officer, Liz Crosson, presented Metropolitan's SRI strategy development. The session also included two breakout sessions where the participants were able to engage with SRI and staff. The breakout sessions were to gather important feedback and attain substantive community engagement.



water· need· communiti· includ·  
mwd· rebat· captur· drought· educ· project·  
based local make develop· low· people solutions  
access· agenc· benefit· ground· issu· meet· recycl· use· also  
climate conservation design easier land provide stormwater  
technical impact· basin· engag· implement· suppli· home· sustain·  
assistance change help important income like multi nature  
population rain reduce residential build· particip· note· websit· resili· resourc·  
1305 address amount better care central consider conversation county delta  
dewatering example groundwater groups information landscape large look  
messaging plants public services watershed actions sale· strateg· agriv· reward· fast· growth  
enter· irrig· lot· overflow· priority· retrofit· smart· adaptation· smart· california· carbon·

## SRI Lunch and Learn

On February 21, the SRI Office sponsored the second of its hybrid "Lunch and Learn" series at Weymouth's Water Quality Lab. Robert Rietveld, Mills' Electrical Team Manager, presented "Solar Powered Battery Storage" and discussed how Mills staff recently used solar technology to charge small power tools for Upper Feeder repairs. After the presentation, the 118 participants were able to ask questions about how the technology worked and see the actual generator that continues to be used for maintenance repairs. The Lunch and Learn series will continue monthly at Union Station and other Metropolitan facilities.



# Sustainability, Resiliency and Innovation

(continued)



## Green Procurement

The SRI Office and the Administrative Services Group attended an online demo of green procurement software that would make it easier for staff to purchase sustainable products. The software is an add-on toolbar that can be used with Google Chrome while shopping. This toolbar is becoming widely used and is already supported by Amazon. Administrative Services will consider future adoption of this software.

## Carbon Free Energy Request for Statement of Interest

The SRI Office, in collaboration with WSO, ESG, Real Property Group, and Legal, issued a Request for Statement of Interest for Carbon-Free Energy Development. This is the first step in assessing what types of renewable energy and storage developers may be interested in pursuing on Metropolitan properties. This supports the Climate Action Plan and could be potential revenue generation.

## Delta Conservancy Proposal

Staff submitted a \$20 million concept proposal to the Delta Conservancy to fund a three-year project that will convert approximately 4,500 acres on Webb Tract to a mosaic of managed flooded wetlands and rice fields to stop and/or reverse ongoing organic soil subsidence, reduce greenhouse gas (GHG) emissions, provide environmental benefits by contributing to augmentation of the Delta pelagic food web, and generate an income from carbon credits generated from the proposed flooded wetlands and lease income from the proposed rice fields. The project has been selected to move forward in the grant process. Staff will introduce the project at Metropolitan's March board meeting. The Delta Conservancy Board will consider the Webb Tract grant application at their May board meeting. A second grant application to fund the development of 380 acres to flooded wetlands on Bouldin Island is under development.

## Innovation

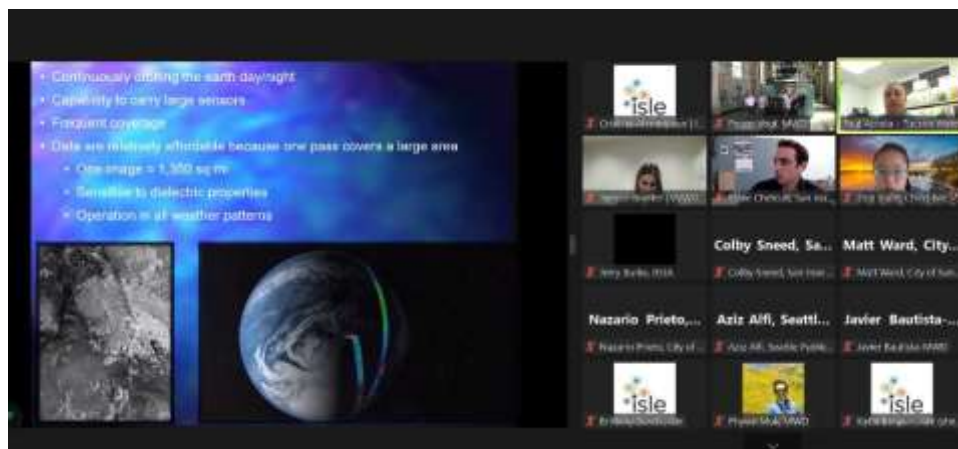
### Emerging Technologies

On February 8, Metropolitan's SRI team held our **Water TAG 33 + NorCal TAG 30 Technology Approval Group (TAG)** meeting with over sixty attendees. Technology Approval Group (TAG) is an innovation forum of the world's leading end-users. Attendees included Metropolitan staff, Isle Technologies, technology presenters, Northern California Water Agencies, Metropolitan member agencies and sub-agencies, Denver Water, LADWP, Albuquerque Water, Tucson Water, City of Santa Barbara, and Southern Nevada Water Authority, etc. The TAG model was first launched in the UK in 2005 and is led by Isle US. TAG accelerates the market uptake of "step-change" technologies by engaging the industry during the pre-commercial stages of development and by leveraging external investment from venture

# Sustainability, Resiliency and Innovation

(continued)

capital investors. Isle US currently operates in eight regions across the country. The group shared technology implementation successes and failures and evaluated technology presentations on a predictive network asset management platform with machine-learning driven analytics and multiparameter sensors; extremely high-resolution, engineering grade, 3D asset models for safe and cost-effective asset condition assessments; pullable and threaded alternative for mechanical connections of high-density polyethylene pipes; reagent-free, flow-independent, multiparameter sensor; and battery-powered, disinfection-by-product sensor that provides real-time monitoring for network-wide deployment.



## Partnerships and Demos

Innovation staff met with the US Green Build Council (USGBC-LA) office to explore a partnership and voting seat on the 2023 Net Zero Accelerator. The 2022 Net Zero Accelerator launched several green building technologies that may be useful in Metropolitan facilities; see [NZA-Pilot-Flight-Manual-2023.pdf](#) ([usgbc-la.org](https://usgbc-la.org)). With Metropolitan's participation, the 2023 Net Zero Accelerator will focus more on water technologies.

Metropolitan is one of 36 international utilities in the research project titled "Leveraging Utility Innovation Performance Measures for Program Management and Organizational Transformation" (TWTI-21-01) led by the Water Tower and Arcadis. The project goal is to develop guidelines for utilities to create and maintain an innovative culture, select the best performance measures for innovation programs, and implement strategies to convey the value and impact of an innovation program. Metropolitan staff from Admin Services and Real Property staff participate in the research project.

Finance and IT staff met with Kognitos for a demo. Kognitos is the world's first combination of Generative AI and Logical execution built to bring the power of AI to all enterprises. Staff is exploring the use of Kognitos to automate accounts payable/receivable.

On February 23, Metropolitan's Filmmakers Club partnered with the Metropolitan Sustainability Expo to show and discuss "Global Peril" a film by Metropolitan's Risk Management Unit Manager, Drew Boronkay. The hybrid event drew over 123 participants, and the second half of the film and discussion will be presented at a future date.

# Sustainability, Resiliency and Innovation

(continued)



**Metropolitan's Filmmakers Club and Sustainability Expo**

## **Environmental Planning Section**

**Core Business: Environmental Planning and Regulatory Compliance Support**

### **Bay Delta Initiatives**

- Continued coordination with DWR and regulatory agencies to support ongoing regulatory permitting efforts for the Delta Conveyance Project.
- Finalized and distributed for public review the Initial Study and Mitigated Negative Declaration (IS/MND) for the Delta Smelt and Native Species Preservation Project.

### **Engineering Services Group**

#### **Pure Water Southern California**

- Conducted technical studies for project modifications.
- Continued preparation of Biological Resources, Hazardous Materials, and Paleontological Resources technical reports.
- Conducted Tribal Cultural Resources consultation, including organizing and leading a meeting with the Gabrieleño Band of Mission Indians-Kizh Nation to initiate consultation, and coordinating with the San Gabriel Band of Mission Indians (Tongva).

#### **Copper Basin Discharge Valve Replacement and Access Road Improvements Project**

- Finalized the Responses to Comments and Mitigation Monitoring and Reporting Program in preparation for March board action to adopt the IS/MND.

#### **Weymouth Water Treatment Plant and La Verne Site Improvements Program**

- Initiated preparation of technical study in support of traffic/transportation analysis in support of the Environmental Impact Report (EIR).
- Initiated Tribal Cultural Resources consultation.

#### **Perris Valley Pipeline**

- Initiated implementation of the Mitigation Monitoring Reporting Program for environmental monitoring of construction activities.

# Sustainability, Resiliency and Innovation

(continued)

## **Construction Monitoring**

- Continued environmental construction monitoring efforts for Etiwanda Pipeline Relining, Prestressed Concrete Cylinder Pipe (PCCP) Second Lower Feeder Reach 3A, PCCP Rehabilitation Valve Storage Building, Orange County Feeder Relining Reach 3, Weymouth Basins 5–8 Rehabilitation, La Verne Shops Upgrades, and Live Oak Reservoir Cathodic System Replacement projects.

## **External Affairs Group**

- Provided legislative analysis on Senate Bill (SB23) (Caballero) Expedited Permitting and Assembly Bill (AB) 606 (Mathis) California Endangered Species Act (CESA): Accidental Take
- Participated in California Council for Environmental and Economic Balance (CCEEB) Natural Resources Task Force (NRTF) monthly meeting.

## **Sustainability, Resiliency, and Innovation Office**

### **Climate Action Plan (CAP) Monitoring and Reporting**

- Gathered data and continued preparation of the draft 2023 CAP Annual Report.
- Continued to gather data for the Natural Gas Equipment Inventory Usage, Employee Commute/Transit, and Net Zero Waste policies.
- Initiated LED Lighting Inventory to document LED technologies within Metropolitan.

### **Water System Operations Group**

- Conducted environmental, biological, and desert tortoise clearance surveys of work sites and staging areas and provided tortoise and desert biological resources training for WSO and other Metropolitan staff in support of the Colorado River Aqueduct (CRA) shutdown and related maintenance and CIP projects (see photos below taken during CRA shutdown).



**Canidae Upper Jaw**



**Notch Leaf Scorpion Weed (*Phacelia crenulata*)**



# Sustainability, Resiliency and Innovation

(continued)



Desert sand verbena (*Arbonia villosa*)



Desert Fivespot (*Eremalche rotundifolia*)



Desert Chicory (*Rafinesquia neomexicana*)



Scorpion tracks



Crab spider on brittle bush flower

# Sustainability, Resiliency and Innovation

(continued)

## **Surface Mining and Reclamation Act (SMARA) Compliance**

- Metropolitan Board of Directors approved the CRA Master Reclamation Plan and adopted the associated Mitigated Negative Declaration.
- Coordinated with Surface Mining and Geology Board (SMGB) personnel regarding Metropolitan support of SMGB's public hearing in March to adopt the Metropolitan's CRA Master Reclamation Plan.

## **Reserve Management**

### **Lake Mathews Multiple Species Reserve**

- Continued invasive stinknet removal; over 100 acres of stinknet have been mapped and treated this year.
- Restored one acre of Riversidean sage scrub habitat, including planting of two species of cactus.
- Conducted sheep grazing on grasslands south of Cajalco Road.

### **Southwestern Riverside County Multi-Species Reserve**

- Coordinated with Real Property, External Affairs, Marina Concessionaire, and Reserve Manager to support opening of the Wildflower Trail at Diamond Valley Lake on February 15.
- Coordinated with CalFire for prescribed burns this year, including conducting a cultural resource survey in the South Shore burn area.
- Collected seeds and plant cuttings for the Reserve nursery to support future restoration site plantings.
- Conducted road grading because of rain damage.



**California Poppy Bloom at Southwestern Riverside County Multi-Species Reserve**

## **External Document Reviews**

- Reviewed six CEQA notices for external projects and prepared comment letters for those that may affect Metropolitan facilities and/or operations.



Metropolitan's Mission is to provide its service area with adequate and reliable supplies of high-quality water to meet present and future needs in an environmentally and economically responsible way.

700 N. Alameda Street, Los Angeles, CA 90012  
General Information (213) 217-6000  
[www.mwdh2o.com](http://www.mwdh2o.com) [www.bewaterwise.com](http://www.bewaterwise.com)

General Manager: Adel Hagekhail  
Office of the GM (213) 217-6139  
[OfficeoftheGeneralManager@mwdh2o.com](mailto:OfficeoftheGeneralManager@mwdh2o.com)