



General Manager's Monthly Report



Activities for the Month of August 2023



Table of Contents

Message from the GM	3
Strategic Priorities Update	4-6
Executive Summary	7-8
Reflections	9
Water Resources and Engineering	
Water Resource Management	10-14
Bay-Delta	15-16
Colorado River	17
Engineering	18-23
Operations	
Water System Operations	24-42
Information Technology	43
Real Property	44-45
Security	46-48
Finance and Administration	
Finance	49-50
Administrative Services	51
Human Resources	52-53
Diversity, Equity and Inclusion	54-55
External Affairs	56-60
Sustainability, Resiliency and Innovation	61-70

Message from the General Manager

Hilary made landfall as Southern California's first hurricane in more than 80 years, the latest example of the threats we face from a changing climate. While damage in the region is still being tallied, I am pleased to report that Metropolitan's facilities performed well, and we weathered the storm with no serious incident and no injuries. I am grateful for the expert and collaborative work of our staff. They not only kept a steady hand on operations during the event but also reduced risk through deliberate advance planning.

Emergency preparedness is one area of focus in my Business Plan, because the nature and scale of risk are changing and can affect both physical and cyber infrastructure. Whether it is shoring up levees in the Delta, training with local fire agencies on wildfire response, or preparing seismic and dam safety action plans, Metropolitan's staff is diligently working to improve readiness across our system.

The old adage "a stitch in time saves nine" is as true as ever, a reminder that investment in preparedness and prevention is money well spent. In addition to emergency preparedness, Metropolitan is heavily invested in emergency prevention, with many examples among the activities reported this month.

Seemingly ordinary activities produce extraordinary returns. Regular inspections, routine maintenance, scheduled repairs and full shutdowns keep the system humming. When we update equipment, make physical improvements and better secure our facilities, we reduce risk and solve emerging problems before they can compromise operations.

Our preparations helped us withstand the recent hurricane, our planning for climate resilience will bolster our readiness for the future, and our work on preventive maintenance is a daily investment in the protection of our assets. Together these activities help ensure the kind of system reliability that our member agencies expect from Metropolitan.

We are one,

Adel



"You hit home runs not by chance but by preparation."

***- Roger Maris,
Professional Baseball Player
and Three-Time World
Series Champion***



Strategic Priorities Update

The General Manager's Strategic Priorities guide actions in key areas of focus, investment, and transformation for Metropolitan.

Empower the workforce and promote diversity, equity, and inclusion

Build a safe, inclusive, and accountable workplace where all employees feel valued, respected, and able to meaningfully contribute to decisions about their work.

The EEO Office reported an average case closure rate of 56 business days for the second quarter of 2023, consistent with our commitment to conducting prompt, thorough and fair investigations. Also, to increase awareness of Metropolitan's EEO policies and programs across all Metropolitan facilities, and to help safeguard the right to a discrimination-free, harassment-free, and retaliation-free workplace for all employees, EEO staff held office hours at four desert facilities: Gene, Iron Mountain, Eagle Mountain, and Hinds. The EEO Office also piloted a new live-training on EEO's complaint and investigative procedures to MAPA members, with plans to offer the training to all Metropolitan employees in September 2023.

This month, the Safety & Regulatory Services Section began evaluating the draft Safety Vision statement proposed by the National Safety Council (NSC) and prepares to promote and socialize the Safety Vision with staff as we prioritize safety initiatives.

Prepare and support the workforce by expanding training and skill development and updating strategies to recruit and retain diverse talent at a time when Metropolitan's needs are evolving and employee expectations about the workplace are changing.

Metropolitan Management University held its third and fourth sessions for its 13th cohort of 21 new managers. The topics included Effective Delegation, Providing Feedback, and Coaching for Performance.

As part of an independent assessment of workforce development programs and opportunities, a survey has been sent to member agencies to begin to identify programs, best practices or needs that Metropolitan can promote in expanding workforce development efforts.

Sustain Metropolitan's mission with a strengthened business model

Develop revenue and business model options that support the needs of the member agencies as well as Metropolitan's financial sustainability and climate adaptation needs.

Staff released the Draft Long Range Financial Plan-Needs Assessment (LRFP) at the August FAIRP Committee and will continue to engage the board, member agencies, and other partners throughout September, October, and November, and as part of the CAMP4W process. The LRFP provides a high-level analysis of rate and tax impacts under various resource development scenarios presented in the IRP Needs Assessment. In support of a review of business model and revenue options, staff anticipates presenting Pure Water Southern California cost recovery alternatives at the October FAIRP Committee.

Manage rate pressure on member agencies through attention to programmatic costs, organizational efficiencies and efforts to secure external funding for projects with broad and multi-purpose benefits.

Metropolitan submitted to the Bureau of Reclamation a proposal for "Bucket 2" funding under the Inflation Reduction Act to help fund conservation programs, new storage programs and Member Agency programs, which would provide long-term reduction of Colorado River water. The team proposed that 30 percent of funds be dedicated to disadvantaged communities.

We also submitted two LOIs this month for federal funding—one for climate resilience work and one for workforce development in partnership with DE&I. The team is also working with Engineering to help streamline processes around state money received for Pure Water Southern California and for drought mitigation projects that support the SWP-dependent areas.

Organizational changes, based on the organizational assessment to increase efficiencies and align priorities, are underway. This includes better aligning functions of the Real Property group across the organization and bringing together safety, security, and emergency management functions within a new Office of Safety, Security and Protection.

Metropolitan replaced the existing computer antivirus solution with one that is part of the Microsoft enhanced security suite resulting in a cost savings of nearly \$50,000 annually for this capability.

Adapt to changing climate and water resources

Provide each member agency access to an equivalent level of water supply reliability through the development of a Climate Adaptation Master Plan for Water (CAMP4W) that integrates water resource, financial and climate adaptation planning.

There were several key CAMP4W discussions this month. The LRPPBM Subcommittee hosted a panel of utility experts to discuss climate adaptation. Panelists from Edison, PG&E, and the Central Arizona Project confirmed that using a high emissions pathway for climate planning is a best practice and shared insights about implementation and affordability challenges. They also discussed the importance of partnerships with other utilities, including those from other sectors, to help share the costs of infrastructure investments needed to adapt to climate change. The EIA Committee hosted a panel on affordability with participants who represent farmers, small water agencies, frontline communities, and academia. Both panels spurred valuable dialogue among board members and will inform the development of evaluative criteria and the decision-making framework for CAMP4W.

The team provided CAMP4W Working Memos 1, 2, and 3. These reflect board presentations and the process thus far and provide foundational information as reference points for the planning process. They also serve as the building blocks of our Year One CAMP4W Report anticipated in Q1 of 2024.

The team conducted another focus group meeting with three Westside SWPDA agencies to update the development and analysis of seven alternatives for regional conveyance. The group determined the range of capacity to size new components of the E/W conveyance system for both raw and treated water alternatives.

Advance the long-term reliability and resilience of the region's water sources through a One Water approach that recognizes the interconnected nature of imported and local supplies, meets both community and ecosystem needs, and adapts to a changing climate.

Science staff reached a major milestone in the Reorienting to Recovery (R2R) Project to develop a Structured Decision-Making process with which to measure salmon recovery against a range of objectives. We finalized "bookend" modeled scenarios to test combinations of management actions to recover salmonids in the Central Valley. These modeling results and feedback from the R2R structured decision-making workgroup were used to develop additional scenarios that balance salmonid recovery with other interests. These additional scenarios will be refined and modeled for workgroup discussion in Winter 2023.

Staff is negotiating Webb Tract Multi-Benefit Project grant terms and conditions that will be included in the October board letter to inform the Board before any grant agreement is executed.

Development is underway of two initiatives intended to support water supply reliability goals. First, Metropolitan is leading a series of meetings with member agencies and groundwater managers to develop new programs for storing surplus water for use in a future dry year. Second, the staff is developing a framework to test the ability for non-contiguous member agencies to exchange water using Metropolitan's system in a way that ensures water sales and increased local supplies.

Draft Direct Potable Reuse regulations have been released, and staff is meeting with member agencies and other water reuse partners to analyze the proposed regulations. Comments are due to the state board on Sept. 8.

Protect public health, the regional economy, and Metropolitan's assets

Proactively identify, assess, and reduce potential vulnerabilities to Metropolitan's system, operations, and infrastructure.

A rapid response vehicle is now ready for deployment to support Metropolitan Agency Reps at Fire Command Posts or act as an alternate mobile command post during an emergency.

A draft of the Hazard Mitigation Plan has been completed and is undergoing final internal review. Work continues on dam emergency action plans with a total of four plans approved to date, three plans currently under review by Cal OES, and three remaining plans to be submitted. Emergency management staff are working with Legal and IT to develop a secure process to share approved plans with stakeholders.

The Board approved a contract with Computer Aid Incorporated to provide staff support to the Cybersecurity Operations Center. This contract will enable Metropolitan to continuously monitor for cyber threats and substantially reduce the time to respond to cyber attacks when they occur.

Apply innovation, technology, and sustainable practices across project lifecycles (design, construction, operations, maintenance, and replacement).

To incorporate sustainable practices into the Capital Investment Plan projects, Engineering Services Group has initiated use of the Envision framework, which is a method for assessing sustainability of civil infrastructure projects. We are pursuing a post-construction assessment ("Pathway B") on the Casa Loma Siphon project, which is wrapping up construction, and on the Rialto Feeder PCCP Rehabilitation project, which is in preliminary design, we can follow the more iterative Envision tools from earlier in the development process ("Pathway A").

Partner with interested parties and the communities we serve

Grow and deepen collaboration and relationships among member agencies, interested parties, and leaders on the issues most important to them and toward mutual and/or regional benefits.

Implementing improvements to the Community Partnering Program, staff is developing criteria for the two pilots of larger grants in collaboration with SRI and with input of the SRI Council. Proposals are being reviewed for other CPP awards, which are now up to \$3,000 per project.

The CAMP4W outreach team has been meeting with member agency PIOs to discuss messaging, development of a communications toolbox, and strategies to engage the public. A new fact sheet is being developed and additional content is being added to the website. Staff intends to hold a listening session for environmental and community-based organizations in the fall.

Reach disadvantaged communities and non-traditional interested parties to better understand their needs and ensure their inclusion in decision making.

Staff hosted a visit to Gene Camp for Colorado River Indian Tribe students. In the Delta, staff is preparing tribal outreach and engagement for the Webb Tract grant to develop an ecocultural evaluation of the land.

Executive Summary

This executive summary is added to this report to provide a high-level snapshot of a key accomplishment from each area of the organization. Detailed information is reported in the pages following this summary.

Administrative Services

On July 15, the Metropolitan Water District of Southern California received the 2023 Achievement of Excellence in Procurement (AEP) Award. Metropolitan was recognized for organizational excellence in public procurement. The application, submitted by the Business Management Team on behalf of the Contracting Services Unit, received high scores in criteria designed to measure innovation, professionalism, productivity, e-procurement, and leadership attributes in the field of procurement. The Administrative Services Section, specifically Contracting Services, takes great pride in this prestigious award that focuses on practical documented work and recognizes Metropolitan's positive contributions toward advancing the public procurement profession. Metropolitan's achievement will be formally recognized at the National Procurement Institute's 2023 Annual Conference in October.

Bay-Delta Resources

Science staff reached a major milestone in the Reorienting to Recovery (R2R) Project Structured Decision-Making process, finalizing "bookend" modeled scenarios to test combinations of management actions to recover salmonids in the Central Valley. These modeling results and feedback from the R2R structured decision-making workgroup were used to develop additional scenarios that balance salmonid recovery with other interests. These additional scenarios will be refined and modeled for workgroup discussion in Winter 2023.

Chief Financial Officer

Participated in the Emergency Operations Center (EOC) activation to monitor and respond to any operational impacts from Hurricane Hilary and the 5.1 magnitude earthquake centered in Ojai.

Colorado River Resources

Metropolitan, in a joint letter with Southern Nevada Water Authority and Central Arizona Project, submitted scoping comments to the Bureau of Reclamation (Reclamation) regarding the scope of the post-2026 Colorado River guidelines EIR process. Metropolitan's staff also worked with the Basin States to help craft comments that were signed by the chair of the Colorado River Board of California. Reclamation will take the comments it received and prepare a scoping report for the EIS process.

Diversity, Equity & Inclusion

August 2–3 DEI Tribal Engagement staff participated in the University of Nevada, Reno's (UNR) "Discover Your Path!" college preparatory camp. The camp is coordinated through the university's Tribal Students Program with the objective of getting high school students ready for college by enhancing their curiosity of discovery in several areas. The camp was hosted at the 4-H camp at Lake Tahoe. Representatives from various industries presented career possibilities in their respective industries. Metropolitan presented its "Indigenous Pathways" program, explaining the different career entryways to those students who are interested in water careers. The camp was attended by over 160 students from various tribes across the states of Nevada, California, and Arizona.

Engineering Services

During August, Engineering staff completed negotiations with the selected contractor for the Sepulveda Pump Station project and has developed the September board letter that will recommend award of Phase 1 of the contract. The contractor was selected using a qualifications-based selection process, which is required under the enabling legislation that made this approach possible for Metropolitan to undertake. This project represents Metropolitan's first project to be delivered with the Progressive Design-Build delivery approach. This new approach is expected to allow for completion of this important drought-initiative project approximately two years earlier than with the conventional Design-Bid-Build approach that Metropolitan has historically used to deliver capital projects.

External Affairs

Metropolitan and the state's Save our Water campaign partnered to sponsor an Angel City Football Club game and a pre-game FanFest event promoting water conservation. Vice Chair Sutley, GM Hagekhalil, and California Secretary for Natural Resources Crowfoot were recognized on the pitch at the start of the game. (August 27)

Human Resources

The Business Support Team planned, organized, and coordinated a "Smart Grocery Shopping and Label Reading" wellness webinar. The live webcast was held on August 22, 2023, and was hosted by Kaiser Permanente. The webinar invited employees to explore ways to shop smarter to meet their health needs and learn to read food labels to make healthy choices. Employees were also invited to create a realistic action plan that will help them take positive steps toward taking control of their health.

Information Technology

Maintenance Management Updates (MMU) Dashboard user acceptance testing was completed. The dashboard officially moved to production and is fully operational.

Real Property

A three-party license agreement has been executed with the United States Navy and Hayday Farms for military training purposes within 159 acres currently leased by Metropolitan to Hayday Farms. Military troops will conduct training exercises at the site with the express consent of Hayday Farms.

Security Management

Cost-effective implementation of basic Crime Prevention Through Environmental Design (CPTED) security principles can effectively deter theft and trespassing and reduce costly crime losses.

Sustainability, Resiliency and Innovation

The SRI office partnered with DEI to present an Affordability Panel of experts at the Equity, Inclusion and Affordability Committee. SRI also brought together utility representatives for a panel regarding Climate Adaptation at the LRPPBM Subcommittee. Both discussions addressed key board considerations under the CAMP4W process. The team hosted a lunch and learn focused on Metropolitan reserves and species protection and celebrated the purchase of Metropolitan's first two zero-emission vehicles at Weymouth.

Water Resource Management

Water Resource Management demonstrated Metropolitan's commitment to conservation by winning the Alliance for Water Efficiency's Water Supplier Member of the Year award for outstanding achievements in water use efficiency and environmental sustainability. Metropolitan's commitment to conservation and capability to design and implement programs was demonstrated by the \$420 million proposal submitted to Reclamation.

Water System Operations

On August 20, Tropical Storm Hilary made landfall in southern California. To prepare for the storm, Metropolitan activated its Emergency Operations Center, as well as two Incident Command Posts in the desert and eastern regions. Staff prepared facilities and staged equipment, adjusted operations including reducing pump flow on the Colorado River Aqueduct, prepared for potential power outages, assessed our dams and reservoirs, and coordinated with emergency partners. Following the storm, aerial and ground patrols were made along the CRA and across Metropolitan's system. Fortunately, there were no major impacts to Metropolitan's facilities. Also, that weekend a 5.1-magnitude earthquake, centered in Ojai, was felt in the region. Patrols were immediately dispatched and found no damage. Both of these unique events reflect the preparedness and resilience of Metropolitan staff who quickly responded to ensure that Metropolitan continues to deliver safe and reliable water.



PROGRAM DESCRIPTION

Metropolitan's Community Partnership Program (CPP), launched in 2000, is celebrating two decades of success supporting outreach with diverse communities and providing sponsorships for community-based non-profit organizations to organize water conservation and water-use efficiency programs and activities in Southern California.

Sprinkled throughout Metropolitan's six-county service area are pockets of learning – conservation demonstration gardens, school programs and community workshops - all designed to teach about the importance of water. Their common thread is funding received through Metropolitan's Community Partnering Program, which provides up to \$3,000 in sponsorships to nonprofits, educational institutions and public agencies.

IMPORTANCE TO METROPOLITAN

Metropolitan's role has been shaped by our commitment to building a diverse and sustainable outreach program to support innovative, sustainable, and resilient projects with a water conservation or education theme. The program, which is administered by the External Affairs Group, is committed to uphold the WE ARE ONE motto and the evolution of this wonderful program to ensure that it operates with community inclusion, and also offers the opportunity for Metropolitan staff to partner with our member agencies on many of the events.

MEMORABLE MOMENT

We conclude each successful sponsorship with the desire to stay engaged and welcome any digital photos, videos, event/program resources or social media posts that capture our collaboration. The responses have been fantastic.

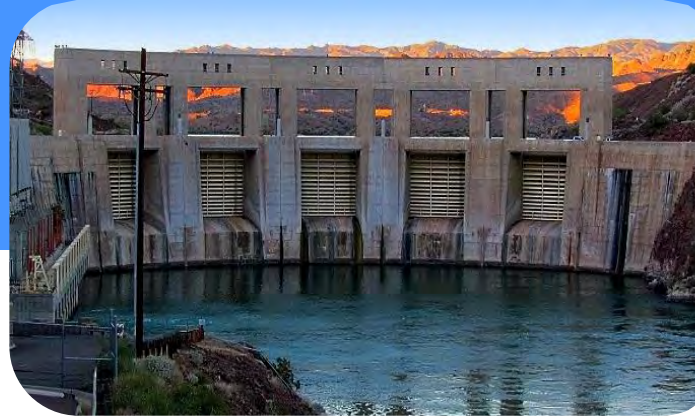
To share just one memorable moment, the CPP supported an established youth science and Earth Day fair this past April. With the sponsorship, Topanga Enrichment Program, was able to add a watershed workshop component to their youth education program. Approximately 80 students visited the adjacent Topanga Creek Watershed during an exploration hike, planeted a drought waterwise native garden, learned about healthy soils, and gained a better understanding of how water conservation is a vital part of each of these topics. Check out this memorable moment video of the Science Day 2023 [here](#).

[Link](#) to the **Community Partnership Program's** criteria and application.

"The greatest investment we can make as a water agency is the investment of empowerment into the community and specifically the youth – for they are the water stewards of tomorrow, and the future is bright!"

--Joseph Chavez, Sr. Public Affairs Representative

Water Resources and Engineering



Water Resource Management

Identify Storage Policies to Improve Response to Extreme Hydrology

Staff hosted the third Member Agency Groundwater/Reservoir Water Management Workshop to provide member agencies with a water supply and operations update and an overview of the proposed Cyclic Cost-Offset Program (CCOP) modifications. Staff incorporated feedback from the workshop into the final CCOP modifications presented to the August One Water and Stewardship Committee. The Metropolitan Board of Directors approved the CCOP modifications, increasing Metropolitan's flexibility to administer the program to further support additional member agency participation.

Ensure Access to Sufficient Water Supplies to Operate a Full Colorado River Aqueduct in Times of Drought

Staff participated in a one-day workshop in Palm Desert hosted by the Colorado River Board of California (CRB) to discuss California's interests and strategy ahead of interstate discussions to determine guidelines that will govern the operation of the major reservoirs on the Colorado River once the current Interim Guidelines expire in 2026. This workshop was a follow-on to a similar three-day workshop in July in Manhattan Beach. Participants included representatives from the California agencies and tribes with rights to water or power from Colorado River facilities that sit on the CRB: Imperial Irrigation District, Palo Verde Irrigation District, Coachella Valley Water District, San Diego County Water Authority, Los Angeles Department of Water and Power, the Quechan Indian Tribe, and Metropolitan. The post-2026 reservoir operation guidelines will significantly influence Metropolitan's future supply of Colorado River water.

Support Capital Investment Program planning

Staff participated in the Capital Investment Program (CIP) review committee. The committee met at least twice a week during the month of August to review and score CIP projects for the upcoming two-year CIP cycle (FY 2024/25 and FY 2025/26). Proposals include rehabilitation of existing infrastructure, projects to increase service reliability in the State Water Project dependent areas, and safety and security upgrades to Metropolitan facilities. All the reviewed projects will be included in the CIP book to be presented to the Board during the next budget discussions.

Implement Regional Conservation Program

Staff spoke on a panel at the Alliance for Water Efficiency Symposium in Chicago, IL, on the policy challenges addressing non-functional turf and partnered with SoCalGas on a Resilient Landscapes workshop for 94 people. This workshop taught attendees about water-saving alternatives to turf.

Water Resources and Engineering

(continued)



Metropolitan was awarded the AWE Water Supplier Member of the Year Award and received the award at AWE's Symposium. AWE cited Metropolitan's extraordinary support and contributions to AWE, its work in and surrounding water efficiency and environmental sustainability, partnerships on events, research, and special projects, and committed membership since 2008. Water Efficiency Team Manager Bill McDonnell received the award from AWE President and CEO Ron Burke.

Staff also partnered with SoCalGas on a Resilient Landscapes workshop for 94 people. This workshop taught attendees about water-saving alternatives to turf.

Manage Existing and Develop New Regional Water Management Programs to Maintain Water Supply Reliability in the Face of Increasing Water Supply Volatility

Metropolitan and the City of South Pasadena executed the South Pasadena Stormwater for Direct Use Agreement under the Stormwater for Direct Use Pilot Program (Pilot Program). This is the third and final agreement under the Pilot Program.

Collaborate with Member Agencies, Water Agencies and Associations, and Provide Leadership for Policy Development, Advocacy, Outreach and Education

Department of Water Resources (DWR) continues to lead efforts in developing the California Water Plan (CWP) Update 2023. DWR is updating white papers on resource management strategies that can help local agencies and governments manage their water and related resources. Over the last three months, DWR held several virtual public workshops to present draft papers on various resource management strategies including water use efficiency, desalination, and recycled water. Staff attended the workshops and provided written and oral comments to DWR on these draft documents. Two additional RMS workshops are scheduled for next month before the release of the CWP public review draft in October.

On June 9, 2023, the Orange County Grand Jury released a report titled, "Historic Rain, Yet Drought Remains" (Grand Jury report), that examined the complex issues surrounding water supply conditions in Orange County. The Grand

Water Resources and Engineering

(continued)

Jury report presented findings and recommendations that strongly support the development of ocean desalination as Orange County's solution to meeting future demand. Staff provided comments on the report's

- Findings, recommendations, and clarifications related to Metropolitan's long-standing efforts in collaborative planning processes
- Achievements in developing local supplies and conservation efforts to meet service area demands
- Role in safeguarding favorable future supply outlook from the State Water Project and Colorado River
- Leadership in developing viable options to ensure Orange County's future water reliability
- Support for local decision-making in determining the most appropriate solutions and local supply programs.

On August 9, staff presented to the California African Americans in Water Education Foundation (CAAWEF) at Metropolitan's headquarters on how Metropolitan plans for drought and abundant conditions. The CAAWEF group also received presentations on Metropolitan's Pure Water, CAMP4W, and engineering efforts.

Staff responded to a request by the Municipal Water District of Orange County (MWDOC) and Eastern Municipal Water District (Eastern) to develop a policy framework allowing non-adjacent member agencies to participate in the production and exchange of local supplies. MWDOC also requested Metropolitan develop a Memorandum of Intent (MOI) to explore potential partnership options in Phase II of the South Coast Water District's (SCWD) Doheny Ocean Desalination Project (Doheny Project). Metropolitan responded with two letters that:

- Agreed to evaluate, in coordination with these member agencies, the feasibility of a policy framework allowing this type of exchange, and
- Provided MWDOC and SCWD with a draft MOI for comments.
- Participate in the Doheny Project, and serve as a framework for facilitating similar arrangements between other agencies within Metropolitan's service area.

In support of this effort, Metropolitan met with MWDOC, Eastern, Western, and SCWD for initial discussions on the exchange framework policy. If implemented, the framework would allow Eastern and Western to participate in the Doheny Project and serve as a framework for facilitating similar arrangements between other agencies within Metropolitan's service area.

Implement Future Supply Actions Funding Program

On August 23, staff hosted a webinar on the proposed next round of the Future Supply Actions Program to solicit input. After board approval of the program, staff will release a Request for Proposals to the member agencies. A recording of the webinar can be accessed at <https://www.mwdh2o.com/funding-opportunities#future-supply>.

The next FSA webinar focuses on overcoming barriers to agricultural use of recycled water on Tuesday, September 26 at 10:00 AM PST. Metropolitan partnered with the Foundation for Food & Agriculture Research on the study through the Water Research Foundation. Registration for the webinar is available at this link: [Addressing Impediments and Incentives for Agricultural Reuse - 1630722 \(webcasts.com\)](#)

Water Resources and Engineering

(continued)

Explore opportunities to leverage Metropolitan’s SWP and Colorado River supplies and storage assets

Staff submitted a \$420 million grant proposal under Reclamation’s Lower Colorado River Basin Conservation and Efficiency Program. The proposal improves the sustainability of the Lower Colorado River Basin, transforms landscapes across the region, and supports disadvantaged communities. Three main types of projects included in the proposal are non-functional turf replacement, increased local supply production, and construction of a groundwater storage bank to convert wet-year flow into dry-year yield. Thirty percent of this funding request would directly help disadvantaged communities (DACs) and income-qualified residents with their need to increase water conservation, boost local supplies, and improve affordability. Including elements that benefit 38 percent of the service area residents who reside in DACs, more than half of the requested funds benefit DACs directly or indirectly. This achievement furthers the Biden Administration’s Justice40 goal to direct 40 percent of the benefits of federal investment to disadvantaged communities.

Promote Metropolitan’s Technical Capabilities and Innovation Efforts to Advance the Understanding of Water Resources Management.

Staff from Engineering, Water Quality, and Water Resource Management held a Peer-2-Peer meeting with representatives of Mekorot (Israel’s national water delivery agency) through Metropolitan’s innovation agreement with Booky Oren GWT. The information exchange focused on the condition assessment of large-diameter pipelines and non-destructive weld inspections.

Staff participated in a meeting of the US Water Alliance’s One Water Council focused on “Regional Partnerships Between Anchor Utilities and Adjacent Communities”. The meeting featured representatives from the Milwaukee Metropolitan Sewerage District, Northeast Ohio Regional Sewer District, and San Francisco Public Utilities Commission discussing how large utilities with the knowledge and resources available can support under-resourced utilities in their region through collaboration.

Water Resources and Engineering

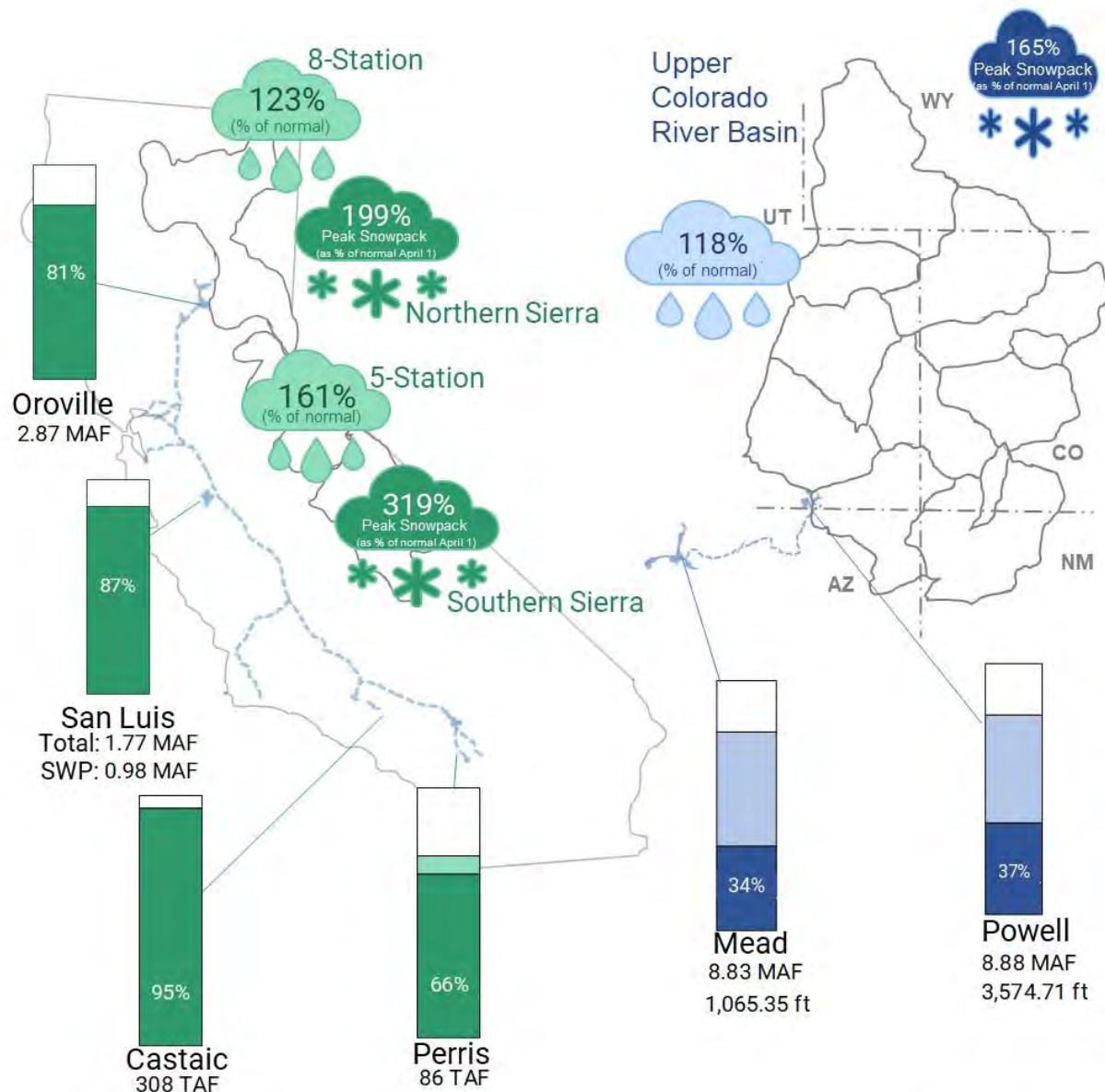
(continued)

State Water Project Resources

SWP Table A - 100% - 1,911,500 acre-feet

Colorado River Resources

Projected CRA Diversions- 658,000 acre-feet



Water Year 2022-2023
As of: 8/31/2023

Extended Report:
<https://www.mwdh2o.com/WSCR>

As of August 31, 2023

Bay-Delta Initiatives

Core Functions

Delta Conveyance

The California Department of Water Resources (DWR) released a draft Environmental Impact Report (EIR) to comply with the California Environmental Quality Act for a public review that ended on December 16, 2022. DWR received more than 700 unique comment letters with over 6,000 individual comments. DWR is in the process of developing responses to the comments received. The Final EIR is expected at the end of 2023. It will include responses to all substantive comments on the Draft EIR and edits to the Draft EIR, as appropriate, to respond to the comments.

The U.S. Army Corps of Engineers (USACE), as part of its permitting review under the Clean Water Act and Rivers and Harbors Act, released a draft Environmental Impact Statement (EIS) to comply with the National Environmental Policy Act for a public review that ended on March 16, 2023. USACE is in the process of developing responses to the comments received.

Delta Conveyance related Joint Powers Authorities

At the August 17 regularly scheduled Delta Conveyance Design and Construction Authority (DCA), the DCA Board of Directors adopted a resolution amending the Purchasing and Procurement Policy. This amendment adds new language to guide the procurement of information technology services, clarifies and defines the current procurement practices, and updates the definition section to include definitions for emergency procurements, interagency agreements, and a definition for material change.

The DCA Board of Directors also adopted a resolution to revise the Allowable Travel Expenses Policy. This revision authorizes the Executive Director to provide any approvals, including potential deviations, from the policy and would clarify that all foreign travel would require prior written DCA approval and be subject to applicable federal General Services Administration requirements.

The August 17 regularly scheduled Delta Conveyance Finance Authority meeting was cancelled.

Sites Reservoir

At the joint Sites Project Authority Board and Sites Reservoir Committee Meeting on August 18, the Reservoir Committee and Authority Board authorized the Executive Director to execute a cooperative agreement between the Sites Project Authority and Reclamation District No. 108 regarding the use of existing partner facilities and development and operation of new infrastructure. This collaborative agreement centers around the planned use of existing facilities including the Colusa Basin Drain south of the Balsdon Wier, Knights Landing ridge cut, Knights Landing outfall gates, and the Wallace Weir. The cooperative agreement outlines support and assistance on several activities including planning, design, permitting, construction of new infrastructure and facility improvements, and coordinating integration into existing facilities.

Science Activities

In August science staff reached a major milestone in the Reorienting to Recovery (R2R) Project Structured Decision Making process, completing modeled bookend scenarios to test combinations of management actions to recover salmonids in the Central Valley. Staff also participated in planning of the 2024 Interagency Ecological Program Workshop and were interviewed by the Delta Independent Science Board on modeling predation in the Bay-Delta Ecosystem and how modeling can be used to inform water management actions.

The Reorienting to Recovery (R2R) Project seeks to collaboratively identify preferred recovery scenarios that advance salmonid recovery in the Central Valley while balancing other social, cultural, and economic interests in the region. In early August, the R2R Project presented results of the “bookend” scenarios that were generated to test distinct combinations of intense management actions focused around one action type (either flows, harvest, hatcheries, or habitat), to the structured decision making (SDM) workgroup. The purpose of these modeled bookends is to explore how the model responds to different inputs so that the group can explore refined scenarios. The model is a coarse tool, and while modifications can be made to improve logic, inputs, and outputs, results are most appropriate and informative when compared among scenarios and can aid in development of refined scenarios and model updates.

Overall, no singular bookend met all biological salmonid recovery targets. Multiple scenarios met recovery targets for productivity, but no scenario met targets for spatial structure and genetic diversity. Since each scenario represents implementing only one type of management action and was not designed to achieve recovery, these results are expected and indicate that there are multiple factors hindering recovery that will require multiple types of management actions. The workgroup brainstormed additional scenarios that balance salmonid recovery goals with other interests for the next round of modeling. The R2R Project team will spend the next few months sorting through these ideas, refining scenarios, and modeling these scenarios for presentation at a future R2R workshop in Winter 2023.

Staff participated in the planning and implementation of the Interagency Ecological Program Workshop for 2024. The workshop showcases a range of topics that will be used to inform the management of the Bay-Delta watershed. Topics include, water operations, restoration, listed species management, and contaminants.

Staff was interviewed by the Delta Independent Science Board regarding modeling and predation to be used for informing actions to improve the management of the Bay-Delta Ecosystem and its water supply. The interviews will be used to develop two workshops for 1) Exploring scientific and management implications of upper trophic level interactions in Delta food-webs and 2) Bay-Delta Modeling Framework/Collaborative.

Delta Island Activities

In preparation for the October board action to amend the Capital Investment Plan to include the Webb Tract Mosaic Landscape Project and to award three agreements to begin design and environmental planning, staff is negotiating grant terms and conditions that will be included in the board letter to inform the Board before the grant agreement is executed. If approved, grant execution is expected soon after the October board action.

Colorado River Resources

Metropolitan Works with its Partners on the Colorado River to Submit Scoping Comments to Post-2026 Guidelines EIR Development

In the initial step in the NEPA process for the development of the post-2026 Colorado River guidelines, Reclamation solicited comments from interested parties on the scope of the EIR that will analyze the impacts of the new guidelines. Comments were due to Reclamation on August 15. Metropolitan staff participated in a 7-state process to develop a consensus response to Reclamation's request for input. Those discussions led to both a 7-state letter and a Lower Basin letter to Reclamation. The Chair of the Colorado River Board of California, JB Hamby, signed both letters on behalf of California. The states agreed that the scope should be limited to focusing on reservoir operations of Lake Powell and Lake Mead and provide sufficient water use reductions to address the current and project supply-demand imbalance on the river. The states also affirmed their commitment to work toward a 7-state consensus alternative that can be included in the analysis of the draft EIS.

Metropolitan's General Manager also signed a letter with the General Managers of Southern Nevada Water Authority and Central Arizona Project highlighting the Lower Basin states urban areas' unique needs. Specifically, the letter highlighted the need to protect human health and safety deliveries, protect and incentivize water storage opportunities in Lake Mead, consider reasonable and beneficial water use standards, and provide for interstate participation in new water supply augmentation projects, like Pure Water Southern California. The letter also recognized the long history of collaboration among the urban agencies over the last two decades. Reclamation will consider the comments received and develop a scoping report, which will guide the development of the new guidelines. Reclamation anticipates issuing a draft EIS in December of 2024, with a Record of Decision made in time for the Annual Operating Plan development for 2027. With the scoping letters submitted, the Basin States are now focusing on the development of an alternative to be included in the draft EIS.

Engineering

Core Business Function – Execute Capital Investment Plan Projects

Engineering Services manages and executes projects within the Capital Investment Plan (CIP) to maintain infrastructure resiliency, ensure regulatory compliance, enhance sustainability, and provide flexibility in system operations to address uncertain water supply conditions.

Distribution System Reliability Program

This program maintains reliable water deliveries through specific rehabilitation and upgrade projects on Metropolitan's pipelines, reservoirs, and control structures. Recent activities include the following:

- **Lake Mathews Wastewater Replacement**—This project consists of replacing the existing septic tank system with a wastewater collection system at Lake Mathews. The new wastewater system connects to a nearby off-site Western Municipal Water District main wastewater line. Metropolitan's Board awarded a construction contract for the final stage in October 2021. The contractor continues to install the sewer line and is sealing up the accessways. Construction is approximately 94 percent complete and is scheduled to be complete in October 2023.
- **La Verne Shops Building Completion—Stage 4**—This project will complete the La Verne Shops building improvements and install Metropolitan-furnished shop equipment. Metropolitan's Board awarded a construction contract in May 2022. The contractor continued coating application of the exterior architectural finish, completed over-excavation and re-compaction of the vertical machine center foundation, and began installing the foundation's reinforcing steel. Construction is approximately 55 percent complete and is scheduled to be complete in August 2024.
- **Orange County Feeder Lining Repairs**—This project replaces the deteriorated internal lining along an 11-mile portion of the Orange County Feeder within the cities of Santa Ana, Costa Mesa, and Newport Beach. Rehabilitation is proceeding in three stages. Construction of Stages 1 and 2 is complete. Metropolitan's Board awarded a construction contract for the third and final stage in April 2022. The contractor completed applying mortar lining, and the pipeline was returned to service in August 2023. Construction is approximately 99 percent complete and is scheduled to be complete by September 2023.



**Orange County
Feeder Lining
Repairs —
Installation of
piping for new
air release valve**

Prestressed Concrete Cylinder Pipe (PCCP) Reliability Program

This program was established to enhance the reliability of Metropolitan's water distribution system and to reduce the risk of costly emergency repairs of PCCP. The priority pipelines included in the program are the Second Lower Feeder, Sepulveda Feeder, Calabasas Feeder, Rialto Pipeline, and the Allen-McColloch Pipeline. A total of 100 miles of PCCP pipelines will be refurbished under this 20-year program. Recent activities include the following:

- **Second Lower Feeder Reach 3B**—This project installs steel lining along a 3.7-mile-long portion of the Second Lower Feeder that traverses the cities of Lomita, Los Angeles, and Torrance. A contract was awarded by Metropolitan's Board in January 2023. The contract is currently potholing for location of utilities and transmitting submittals for approval. Construction is 22 percent complete and is scheduled to be complete in September 2025.
- **Sepulveda Feeder Urgent Carbon Fiber Lining**—This project will rehabilitate deteriorated PCCP segments using carbon fiber lining. In February 2023, a pipeline inspection discovered the three deteriorated segments, which are located approximately three miles apart, in the Van Nuys, Sherman Oaks, and Brentwood neighborhoods of the City of Los Angeles. Design is complete and the Board awarded a construction contract in August 2023.
- **Sepulveda Feeder Reach 2**—This project enhances distribution system reliability by rehabilitating PCCP segments of the Sepulveda Feeder. Reach 2 spans 3.9 miles through several cities including the cities of Torrance and Los Angeles. Final design is approximately 90 percent complete and is planned to be complete by November 2023.

Colorado River Aqueduct (CRA) Reliability Program

This program maintains the reliability of Metropolitan's CRA conveyance system. Recent activities include the following:

- **Copper Basin Discharge Valve Replacement**—This project will install a new 54-inch fixed cone valve and actuator at the base of the dam, refurbish a slide gate and the existing valve house, and upgrade all associated electrical systems and access ladders at the Copper Basin Reservoir. This project will also include the replacement of the access ladders at the Gene Wash Dam. Final design is 80 percent complete and is scheduled to be complete in December 2023.
- **Eagle Mountain Village Paving**—This project replaces the pavement at the Eagle Mountain village. Final design is complete, and board award of a construction contract is scheduled for the October 2023.
- **Transformer Procurement**—This project replaces the 35 230 kV and 69 kV step-down transformers that are used to run the main pumps at the five Colorado River Aqueduct pumping plants. Preliminary design is complete and board authorization of an agreement amendment for final design is planned for November 2023.
- **CRA Storage Buildings**—This project furnishes and installs storage buildings at Hinds, Eagle Mountain, and Iron Mountain and constructs associated site improvements. The construction contract was awarded at the July 2023 board meeting. The Notice to Proceed was sent to the contractor in September 2023. Construction is anticipated to be completed in January 2026.
- **Flow Level Monitoring Stations**—This project will install 12 flow monitoring stations at remote locations along the Colorado River Aqueduct. The contractor is preparing contract submittals for review and approval. Construction is 5 percent complete and is scheduled to be complete July 2024.

System Flexibility/Supply Reliability

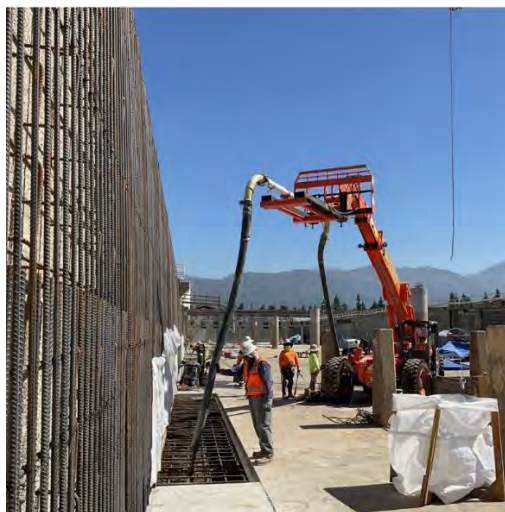
Projects under this program will enhance the flexibility and/or increase the capacity of Metropolitan's water supply and delivery infrastructure to meet current and projected service demands. Projects under this program address climate change affecting water supply, regional drought, and alternative water sources for areas dependent on State Project Water.

- **Perris Valley Pipeline**—This project will complete construction of the Perris Valley Pipeline and provide service connections to Eastern and Western Municipal Water Districts. This project installs 3,000 linear feet of tunnel which crosses the Interstate 215 freeway. Metropolitan's Board awarded a construction contract in January 2023. The contractor has mobilized its trailer and equipment on the site, is preparing contract submittals for review and approval, has installed the water treatment system, obtained all the necessary traffic detour plans, and has started construction of the main drive shaft. Construction is 10 percent complete and is scheduled to be complete in early 2025.
- **Wadsworth Pumping Plant Bypass**—In conjunction with three other projects, this project enhances water supply reliability in the Rialto Pipeline service area by enabling water to be pumped from the Wadsworth Pumping Plant forebay to Rialto Pipeline by way of the Inland Feeder. This project will install a bypass pipeline and an isolation valve to interconnect the Wadsworth Pumping Plant with the Eastside Pipeline. Metropolitan's Board awarded a construction contract in January 2023. The contractor has mobilized onsite and started excavation for the valve structure. Construction is 8 percent complete and is scheduled to be complete in May 2024.
- **Badlands Tunnel Surge Protection**—In conjunction with three other projects, this project enhances water supply reliability in the Rialto Pipeline service area by enabling water to be pumped from the Wadsworth Pumping Plant forebay to Rialto Pipeline by way of the Inland Feeder. This project, which will install a new hydraulic surge tank at the south portal of the tunnel, will protect the Inland Feeder from hydraulic transients when pumping water from DVL to the Rialto Pipeline through the Inland Feeder. Final design is complete and board award of a construction contract is scheduled for October 2023.
- **Inland Feeder-Rialto Pipeline Intertie**—In conjunction with three other projects, this project enhances water supply reliability in the Rialto Pipeline service area by enabling water to be pumped from the Wadsworth Pumping Plant forebay to Rialto Pipeline by way of the Inland Feeder. This project will install an interconnection pipeline and isolation valve structure between the Inland Feeder and Rialto Pipeline. Final design for this project is complete and the board award of a construction contract is scheduled for September 2023.
- **Sepulveda Feeder Pumping Stations**—This project will install new pump stations at the existing Venice and Sepulveda Canyon Pressure Control Facilities providing the ability to reverse flow in the Sepulveda Feeder and deliver water from the Central Pool to portions of the Jensen plant exclusive area. This project will use progressive design-build (PDB) for delivery. Staff has evaluated the SOQs for selection of the design-builder, interviewed the three respondents, and has selected a contractor based on qualifications-only process. Staff has negotiated a final agreement for Phase 1 preconstruction design services under a PDB contract with the recommended design-builder. The board award of a Phase 1 agreement is scheduled for September 2023.

Treatment Plant Reliability Program

This program was initiated to maintain reliability and improve the operating efficiency of Metropolitan's water treatment plants through specific improvement projects. Recent activities include the following:

- **Weymouth Basins 5–8 and Filter Building No. 2 Rehabilitation**—This project rehabilitates major mechanical and structural components including the flocculation/sedimentation equipment, sludge pumps, baffle boards and walls, launders, inlet gates, and outlet drop gates at the Weymouth plant. Rehabilitation work also includes seismic upgrades of basin walls and inlet channel, hazardous material abatement, and replacement of filter valves and actuators in Filter Building No. 2. Metropolitan's Board awarded a construction contract in May 2022. The contractor continued planned work under the first quarter-plant outage, including installation of filter valves and piping in Filter Building No. 2 and construction of new concrete walls and installation of new mechanical piping and electrical conduits in Basins 7 and 8. Construction is 40 percent complete and is scheduled to be complete in May 2025.
- **Mills Electrical Upgrades**—This project upgrades the electrical system with dual-power feeds to key process equipment to comply with current codes and industry practice, improve plant reliability, and enhance worker safety. Stage 1 construction is complete, and a construction contract for Stage 2 improvements was awarded in November 2021. Stage 2 improvements will add a second incoming 12 kV service from Riverside Public Utilities, reconfigure the existing 4160-volt switchgear, and replace the standby generator switchgear and the emergency generator programmable logic controller. Metropolitan's Board awarded a construction contract in November 2021. The contractor completed pulling cables to the new Riverside Public Utility switchyard transformer pads and is currently constructing the building wall and slab for the expanded ORP switchgear building. Construction is 30 percent complete and is scheduled to be complete in February 2025.
- **Jensen Ozone PSUs Replacement**—This project rehabilitates the ozone generation system at the Jensen plant by replacing four existing ozone power supply units (PSUs) and four sets of generator dielectrics. The project also makes required modifications to the associated electrical, control, and cooling water systems. Metropolitan's Board awarded a construction contract in June 2022. All PSUs and dielectrics have been manufactured and delivered. Installation of two PSUs is complete and dielectrics for two ozone generators have been replaced. The contractor continued pipe fabrication and valve procurement for the cooling water system modifications and coordination study for start-up testing of the two newly installed PSUs. Construction is 45 percent complete and is scheduled to be complete in December 2023.



Weymouth Basins 5-8 and Filter Building No. 2 Rehabilitation
—Concrete placement for Basin 7 wall footing



**Weymouth Basins 5-8 and Filter Building No. 2 Rehabilitation
—Fabrication of steel and formwork for Basin 8 drywall**

System Reliability Program

The System Reliability Program consists of projects to improve or modify facilities located throughout Metropolitan's service area to use new processes and/or technologies and improve facility safety and overall reliability. Recent activities include the following:

- **Headquarters Physical Security Upgrades**—This project implements comprehensive security upgrades for Metropolitan's Union Station Headquarters. These upgrades are consistent with federally recommended best practices for government buildings. This work has been prioritized and staged to minimize rework and affects day-to-day operations within the building. Stage 1 work is complete and provides enhanced security related to perimeter windows and doors. Stage 2 work is complete and provides security system upgrades inside the building with a focus on the main entry rotunda area, boardroom, executive dining lounge, and security control room. Stage 3 improvements will provide security system upgrades around the perimeter of the building. Metropolitan's Board awarded the Stage 3 construction contract in December 2022. The contractor continued installation of bollards and other security features including baseplates, cameras, speakers, and electrical rough-in for courtyard gates on Level P1. Construction is 30 percent complete and is scheduled to be complete in January 2024.
- **Headquarters Building Fire Alarm and Smoke Control System Upgrades**—This project upgrades the Metropolitan Headquarters Building fire life safety systems, which includes replacement of the fire detection and alarm system and HVAC system improvements for smoke control. The fire alarm and smoke control systems in the Metropolitan Headquarters Building provide detection, notification, and control of building functions so that occupants and visitors can safely exit in the event of a fire.

Metropolitan's Board awarded a construction contract in August 2020. The contractor completed migration of the new CO monitoring system on parking garage levels P1 and P2 to the new smoke control system and commissioning of the new smoke fire dampers. The contractor began testing and commissioning of the smoke control system and final testing/sign-off of the fire alarm and smoke control systems by Los Angeles Fire Department. Construction is 92 percent complete and is scheduled to be complete in September 2023.

- **SCADA System Upgrades**—This project will upgrade Metropolitan's entire control system in incremental stages, spanning the Colorado River Aqueduct, the five water treatment plants, and the conveyance and distribution system. The first stage of this project replaces the control system at the Mills plant, starting with a pilot effort on one of the plant's remote terminal units. The pilot effort will demonstrate the proposed technology and the consultant's approach for the plant and the overall project. The consultant continued providing submittals, performing equipment verification, and developing control narratives and a training plan. The pilot phase is approximately 45 percent complete and is scheduled to be complete in December 2023. The system upgrades at the Mills plant are scheduled to be complete by April 2026.
- **Foothill Hydroelectric Plant and Control Building Seismic Upgrade**—This project strengthens the Foothill Hydroelectric Plant and Control Building to withstand a significant earthquake by removing and replacing the roofing system, adding encasements to enlarge and strengthen concrete columns, and reinforcing shallow foundations. A construction contract was awarded in April 2023. The contractor continued performing abatement activities on the building's roof and demolition of existing exhaust fans. Construction is 15 percent complete and is scheduled to be completed in December 2024.

Protecting the Public and Metropolitan's Assets

Engineering Services continued to develop state-mandated Emergency Action Plans (EAPs) for Metropolitan's state-regulated dams to help ensure long-term public safety. Four EAPs are currently under review by the Cal OES, and outreach efforts for the Garvey Reservoir and Palos Verdes Reservoir are currently underway, with an anticipated completion and submittal date of December 2023.

Operations

Water System Operations



Core Business Objectives

Prepare Employees for New Opportunities

The Water System Operations Apprentice and Technical Training Programs develop and train personnel to become qualified mechanics and electricians responsible for maintaining Metropolitan's water treatment and distribution systems. This month, classes continued for the Class of 2026 Electricians with instruction on basic electrical safety; measuring volts, amps, and ohms; AC/DC circuits; and familiarization with the National Electrical Code. Class of 2026 Electricians were joined by journey-level mechanics participating in the second cohort of the Electrical Cross-Training Directed Study Program. This cross-training program is co-sponsored by Water System Operations and AFSCME Local 1902 to provide Desert mechanics with requisite electrical training designed to meet minimum qualifications for the Pump Plant Specialist classification. Employees with three or more years of journey-level mechanical experience on a Desert Pump Plant Team or the Desert Aqueduct Pump Maintenance Team are qualified to participate. Program completion involves three years of academic instruction and 1200 hours of practical on-the-job training. Once training is complete, participants are eligible to apply for vacant pump plant specialist positions.



Class of 2026 and Desert Electrical Cross Training participants using AC/DC trainers

Manage Vacancies

WSO filled four vacancies in July 2023.

Provide Reliable Water Deliveries

Metropolitan member agency water deliveries were 109,700 acre-feet (AF) for August with an average of 3,500 AF per day, which was about 100 AF per day lower than in July. In addition, Metropolitan delivered 17,700 AF to Cyclic and Conjunctive Use Programs. Treated water deliveries were similar to those in July for a total of 69,600 AF, or 54 percent of total deliveries for the month. The Colorado River Aqueduct (CRA) pumped a total of 60,000 AF in August. CRA deliveries were lower this month as a result of the Hurricane Hilary storm event. Metropolitan temporarily

reduced pumps on the CRA from five to three pumps because of reduced demands during this event. State Water Project (SWP) imports averaged 4,400 AF per day, totaling about 137,700 AF for the month. The target SWP blend is around 75 percent for Weymouth and Diemer plants and 55 percent for the Skinner plant.

Manage Water Reserves

The 100 percent State Water Project (SWP) allocation when combined with Colorado River supplies provides the region with more water than normal demands. Water continues to be managed according to Water Surplus and Drought Management (WSDM) principles and operational objectives with an emphasis to position SWP supplies to meet future demands in the SWP-dependent area. Metropolitan continued deliveries to Desert Water Agency and Coachella Valley Water District to meet Metropolitan's exchange obligation. However, there will be a two month or longer delay in deliveries because of damage to DWCV's facilities from Hurricane Hillary. With the higher SWP allocation and low regional demands, Metropolitan is working to maximize its use of Table A supplies this year. Staff are working with member agencies to manage supplies through the Cyclic and Cyclic Cost Offset Program.

Support the Pure Water Southern California Program

During August, staff assumed full operational control of the reuse demonstration plant at the newly renamed Grace F. Napolitano Innovation Center. Staff completed transitioning monitoring, operations, maintenance, and process optimization from consultant-led operations to Metropolitan staff-led operations, including standby and off-hours responses. Staff performed routine maintenance activities successfully, including quarterly clean-in-place actions of both membrane bioreactor (MBR) systems and the reverse osmosis system, with a sample reverse osmosis membrane removed and sent out for third-party analysis of fouling and scale formation to inform future cleaning operations. Additionally, after incorporating Independent Science Advisory Panel input, staff prepared the final report on tertiary MBR testing and monitoring for submission to the Division of Drinking Water.

Manage Power Resources and Energy Use in a Sustainable Manner

Energy markets in the first half of the month remained elevated, reflecting hotter summer weather, increased natural gas prices, and increased California ISO (CAISO) demand. Natural gas prices in Southern California spiked in the second half of July because of a forced outage of a major Southern California Gas Company pipeline supplying gas from the San Joaquin Valley into the Los Angeles Basin. Gas prices roughly doubled from the \$7-10/MMBtu range to the \$15-20/MMBtu range, although readjusted downward over the following weeks when the pipeline was repaired and placed back in the service in the first half of August.

Metropolitan proactively reduced CRA pumping from five to three pumps in anticipation of the arrival of Tropical Storm Hilary. This reduced CRA demand by about 70-80 MW. Despite concerns, there were no significant impacts on the Western electric transmission system. Scattered outages were experienced across Southern California, but large widespread outages did not occur, and the CAISO transmission system remained in normal operating mode. Following the cooling effects of Tropical Storm Hilary, CAISO demand decreased and remained moderate for the second half of the month. Market prices reflected this decrease in demand.

The CRA energy cost budget for FY 2023-24 is \$82.6 million. The current cost forecast for this fiscal year is somewhat lower at \$75.1 million, because of reduced pumping and lower forward cost curves.

Daily generation output from Metropolitan's small hydroelectric plants (HEPs) averaged around 20 mega-watts during the month of July, for a total energy output of about 14,000 megawatt-hours (MW-hrs). HEP output is trending upwards as summertime demands increase and Metropolitan receives deliveries from the 100 percent SWP

allocation. Metropolitan's solar facilities totaling 5.4 megawatts of capacity generated approximately 1,000 MW-hrs in August 2023.

Ensure Water Quality Compliance, Worker Safety, and Environmental Protection

Metropolitan complied with all water quality regulations and primary drinking water standards during July 2023. On August 15, staff accompanied a Division of Drinking Water (DDW) representative on a thorough inspection of the domestic water systems at the Gene and Iron Mountain pumping plants. These inspections were the second part of the required sanitary survey initiated in July. The inspection was successful, with the DDW representative commending Metropolitan's staff for their knowledge. A report is expected from DDW that will summarize the findings of the sanitary survey and any recommendations for improvement.

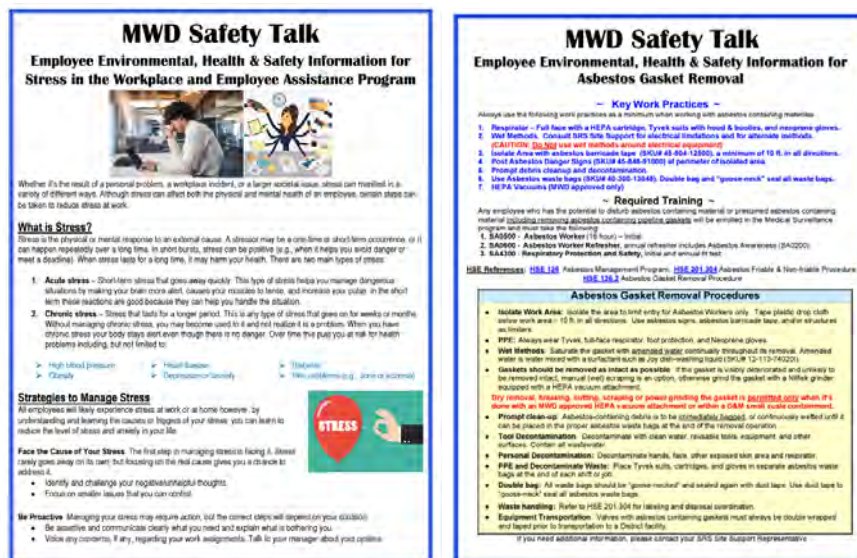
On August 30, staff met with DDW to provide details on Metropolitan's 2023–2024 shutdown schedule. Providing this information ensures that the drinking water regulators have prior knowledge and can ask clarifying questions on the potential for shutdowns to affect the public drinking water supply or regulatory compliance.

The Safety & Regulatory Services Section hosted the Safety Committee Forum on August 2. The Forum, held biannually, promotes collaboration among safety committees allowing committee representatives to discuss organization-wide safety concerns and share local issues and lessons learned at their individual facilities. This month, staff provided a comprehensive look into the safety committee role as part of the Injury and Illness Prevention Program. Safety committees are employee-driven and intended to facilitate communication and exchange of safety-related information between employees and managers. The presentation outlined essential elements for conducting effective committee meetings and reviewed safety committee activities. The importance of communication was emphasized throughout.



Safety Committee Activities reviewed during the Safety Forum

Staff revised Metropolitan Safety Talks entitled "Stress in the Workplace and Employee Assistance Program" and "Asbestos Gasket Removal." These Safety Talks were updated to reflect the new Employee Assistance Program provider and to provide information on the asbestos gasket removal procedure, key work practices, and required training to perform work safely. The "Stress in the Workplace and Employee Assistance Program" Safety Talk also provides information on stress, strategies to manage stress, and resources available to Metropolitan employees.



Revised Stress in the Workplace and Employee Assistance Program (left) and Asbestos Gasket Removal (right) Safety Talks posted on the IntraMet

Staff conducted two sessions of trailer towing safety for treatment and distribution personnel at the Diemer plant. Instruction included classroom lecture and a practical application aimed at reducing risk and improving operational safety. The course is available to all Metropolitan employees and teaches trailering components, driver responsibility, safe driving practices, regulatory requirements, and proper use of safety devices. Contact Training to request class enrollment.



Staff demonstrating trailer towing and driving safety at the Diemer plant

Optimize Maintenance

Staff is in the process of replacing the 125-volt direct current battery system for the Corona and Temescal Hydroelectric Plants (HEPs) located on the Lower Feeder. The batteries are critical to safely shutting down the plant in the event a unit trips offline because of a mechanical or power-related problem. The previous battery systems failed a few years prematurely because of the excessive heat from the hot summer days. Modifications to the ventilation system and the addition of a cooling system will ensure an extended service life while keeping the hydroelectric plants protected from adverse power events.



Staff setting batteries in place before making final connections at (Corona/Temescal HEP)

Skinner plant staff upgraded an outdated network switch serving critical plant effluent monitoring and control equipment on two treated water pipelines, including flow meters and flow control valves at the Auld Valley Pressure Control Structure (PCS). Upgrading these switches throughout the distribution system improves the reliability and security of the system, which is critical for providing timely responses to the changing needs of Metropolitan's member agencies.



Skinner staff replacing distribution system network switch in Auld Valley PCS

Staff repaired the polymer feed system in the Solids Handling Facility at the Weymouth plant. Polymer provides lubrication for the solids to move through the system, preventing clogging that would require specialized equipment to remove the blockage. The repair included removing, disassembling, cleaning, and reinstalling the injection check valves.



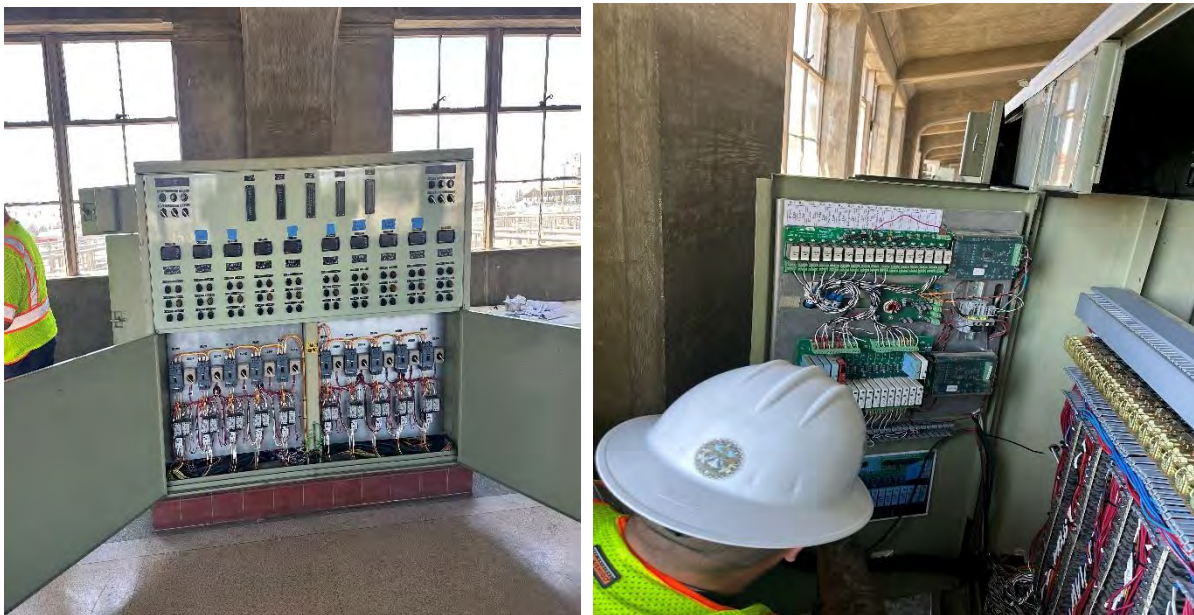
Staff removing injection check valves for cleaning (left); and injection check valves after cleaning (right) at the Weymouth plant

Weymouth plant staff is responsible for operating and maintaining the backup electrical power systems at seven off-site facilities. This includes three hydroelectric plant/pressure control structures, three reservoirs, and the Eagle Rock Operations Control Center. Annual testing of the equipment includes a full functional test at each facility. Recently completed testing at Palos Verdes Reservoir involved staff from multiple operations teams to organize the outage and ensure that there were no interruptions to normal treatment and delivery processes. Upon completion of the testing, staff corrected all failures and abnormalities to ensure that the systems will be ready to operate during a true emergency loss of electrical power.



Test equipment set up for functional test (left); and staff taking readings (right) of critical equipment at Palos Verdes Reservoir

Weymouth plant staff completed wiring of a filter console as part of the Basin 5–8 Rehabilitation Project. The wiring included terminating the input/output (I/O) boards and control panel terminals. Point-to-point testing was completed, ensuring that equipment functioned as designed.



Front (left) and rear (right) of filter consoles at the Weymouth plant

The Desert business and SCADA networks travel long distances on a wireless microwave backbone to most remote sites. Staff assisted the IT staff with repairing a microwave communication dish mounted on a communication tower. Because of high winds in the Desert moving the dish, it required repositioning and additional measures to secure it.



Staff repairing a microwave dish on a communications tower at a Desert facility

This month, staff continued repair of the discharge valves of a unit at Eagle Mountain pumping plant. Staff has completed installation of the mechanical actuation components and is in the process of the final assembly and adjustment for operational testing.



Staff test fitting the lift nut for a unit's discharge valve at Eagle Mountain pumping plant

Staff disassembled a unit for pump and discharge valve repairs at Iron Mountain pumping plant. Because of many years of operation, minor pitting and imperfections in the impeller surface were noted. Staff will fill the voids and build up additional material which will then be formed to repair the surface imperfections.



Staff repairing a pump unit impeller at Iron Mountain pumping plant

Staff completed the installation of a temporary grade control cutoff wall in the San Jacinto River to mitigate erosion due to heavy rainfall. The San Jacinto River is 42-miles long and conveys water from the San Jacinto mountains northwest into Mystic Lake, a few miles east of Lake Perris. Over the years, the soil coverage has diminished. In 2018, heavy rains exposed the Casa Loma Barrel 1 and San Jacinto pipeline. At that time, staff installed protective steel plates and K-rail to protect the pipelines. Last year's heavy rains displaced the steel plates and K-rail. Staff worked with Engineering staff to revise the temporary protection measures until a permanent fix can be designed. This area made it through Tropical Storm Hilary with no impact to the protection measures put in place.



Staff excavating K-rail and steel plates (left) and new measures (right) in the San Jacinto River Crossing

The La Verne Shops received a request to manufacture several components in support of the Jensen plant's flocculator repairs. This work required eight sets of custom flocculator base plates for Basins 10 and 12 and six, 8- inch diameter targets to aid in the alignment of the flocculator shafts. Shop staff also performed as-found measurements of flocculator shafts and flange couplings. The shafts were cleaned and returned to service.



Cutting carbon steel plate (left) and four sets of cut plates (right) for Basin 10 at the Jensen plant



Staff welding custom flocculator base plate (left) and completed base plate (right) for repairs at the Jensen plant

Staff continued work to prepare for the installation of additional level monitors along the CRA that will allow continuous remote monitoring of flows and elevations at key locations. With the expectation that Southern California will continue to experience drought conditions in the coming years because of climate change, there is an increased need to operate the CRA at high flows. The increased flow rate of the CRA requires increased monitoring of canal operations to ensure maximum capacity while mitigating the risk of overtopping the canal. The work included adding guardrails to protect staff, installing transducer brackets and access gates, and placing stairs that will enable staff to access the sensors that will be installed by a vendor at a later date.



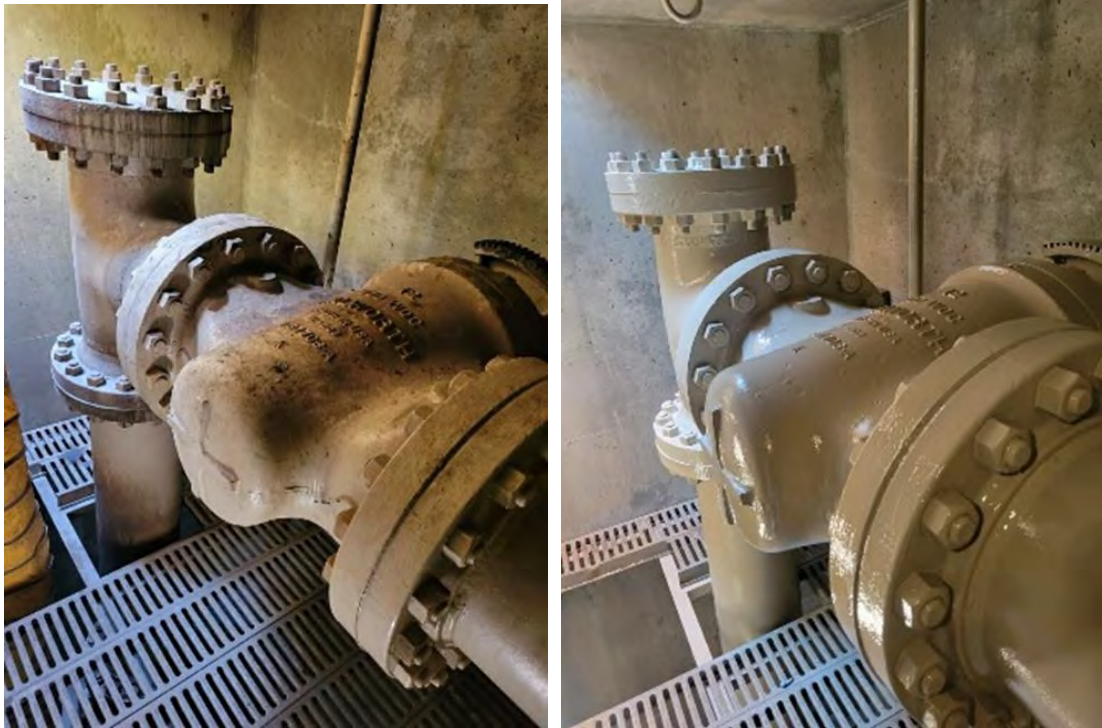
New transducer bracket and guard rails (left) and new stairs to access a transducer bracket (right) along the CRA

Staff installed new sump drainage piping at an interconnection structure adjacent to the Skinner plant. The new drainage system will be an improvement on the old system that created large muddy areas where vehicle traffic is common.



Staff installing a new piping system to discharge sump water from nearby structures at the Skinner plant

Staff completed coatings inspections and service on the South Coast Feeder as part of Metropolitan's infrastructure protection program to prevent corrosion. Approximately 40 percent of the 49 substructures along the feeder required some level of coatings repairs. The structures consist of blow-offs, pump wells, vacuum valve air releases, sectionalizing valves, and pipeline interconnections. The South Coast Feeder connects the Lower and Second Lower Feeders.



Before (left) and after (right) coatings work on the South Coast Feeder

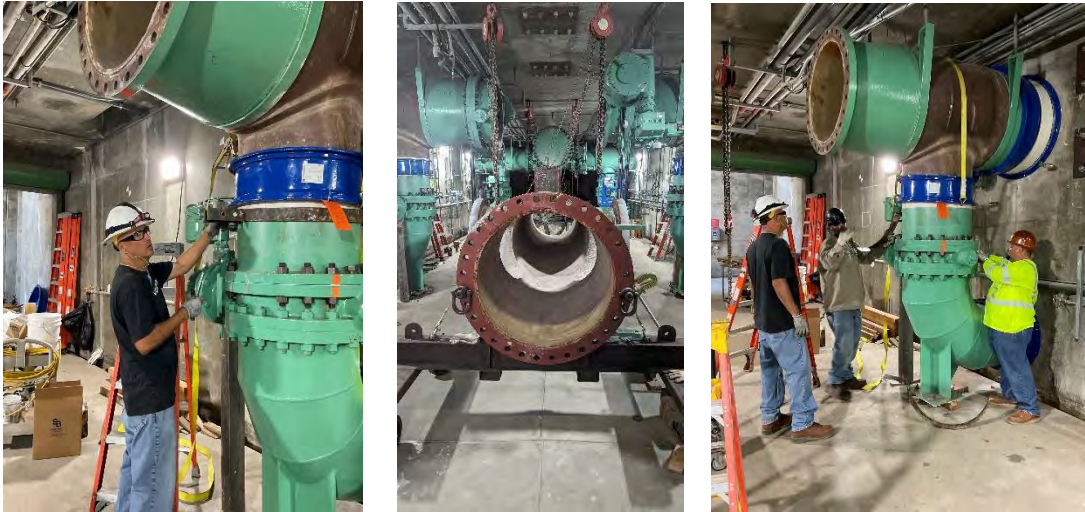
Optimize Water Treatment and Distribution

The State Water Project (SWP) target blend entering the Weymouth and Diemer plants was 75 to 80 percent in August. The Mills plant continued to receive a blend of water from Silverwood Lake and Lake Perris in August due to low alkalinity in the East Branch SWP. The SWP target entering Lake Skinner fluctuated to accommodate multiple operational needs and to maximize water delivery from the SWP. The SWP blend leaving Lake Skinner was relatively stable, at about 50 percent.

Flow-weighted running annual averages for total dissolved solids from July 2022 through June 2023 for Metropolitan's treatment plants capable of receiving a blend of supplies from the SWP and the Colorado River Aqueduct were 523, 535, and 608 mg/L for the Weymouth, Diemer, and Skinner plants, respectively.

Elevated nitrite levels at multiple locations demonstrated that nitrification was occurring in parts of the distribution system, specifically in the West Basin service area, the Oak Street PCS and Second Lower Feeder area, and the Orange County area. Operational changes to control nitrification and improve water quality in the affected areas included increased monitoring of nitrite and chlorine residuals, modifying operations to increase flow in the impacted parts of the system, increasing plant effluent pH at some of the treatment plants, and extensive flushing of the distribution system at multiple locations. Staff met with impacted Member Agencies to discuss monitoring results and operational strategies for improving water quality.

Staff is performing repair work on the west backwash piping at the Diemer plant. The backwash piping was damaged in May 2022 by a backwash valve failure. The failure resulted in water flooding the filter gallery, forcing the plant to operate with a reduced capacity. Upon completion of the repair work, Diemer plant will be able to return to full capacity.



Staff performing repair work on the backwash piping at the Diemer plant

Staff responded to a communication issue with the ozone contactor maintenance air compressor programmable logic controller (PLC) at the Skinner plant. Because of obsolete equipment, restoring the PLC to working order required a complete replacement, including converting the program for compatibility. The compressor is used to ensure worker safety as it purges ozone out of the ozone contactors through the ozone off-gas destruct system before staff enter a contactor for maintenance.



Staff troubleshooting and preparing to upgrade ozone contactor maintenance air compressor PLC at the Skinner plant

Improve Emergency Preparedness and Response

On August 19, Metropolitan activated its Emergency Operations Center (EOC) to prepare for and respond to Tropical Storm Hilary. Hilary began as a category four hurricane as it moved north along the Baja coast towards Southern California. Staff closely monitored storm impacts in the Desert region and other locations within Metropolitan's service area and provided updates to management and response staff throughout this event. At the height of the storm, a magnitude 5.1 earthquake struck near Ojai. The Western Region Incident Command Post was activated to coordinate field assessments of critical facilities near the epicenter. No damage was found due to the earthquake. On August 22, the EOC was deactivated and returned to Duty Officer status, as no significant damage resulted from the storm. Thanks to all the staff that worked tirelessly through the weekend and were prepared to support an extended operation, if necessary.

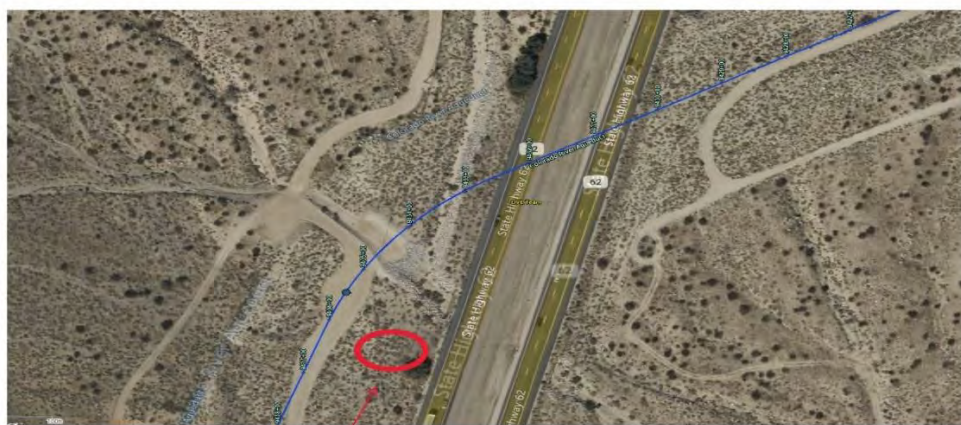
Metropolitan activated the Desert and Eastern Region ICPs in preparation for Tropical Storm Hilary. The region endured heavy rains, with the majority of downfall happening in the desert area near Palm Springs and Indio. Patrols were dispatched throughout the Eastern and Desert Regions to assess for major damage, including an aerial patrol of the Colorado River Aqueduct (CRA) and San Diego Canal because many roadways were not passable. Staff performed infrastructure inspections following the aftermath of the storm and found that a large volume of water had traveled through the Whitewater Erosion Control Structure, causing minor damage and depositing silt and debris throughout the channel. Staff also found a large section of the CRA conduit exposed and other minor erosion areas on roads along the San Diego and Casa Loma Canals. Staff has initiated repair plans to promptly address those areas.



Westbound (left) and eastbound (right) views of the Whitewater Erosion Control Structure



CRA conduit exposed along the CRA



Pipe exposure location along the CRA



Erosion on roads along the San Diego Canal (left) and (right) Casa Loma Canal

Protect Source Water Quality

On August 8, Metropolitan participated in a two-day onsite Technical Work Group meeting for the Topock Chromium-6 Groundwater Remediation Project in Lake Havasu City, Arizona. PG&E recently informed stakeholders of a slight increase in chromium-6 levels near the Colorado River floodplain. The interim treatment facility removing chromium-6 from the floodplain was decommissioned to avoid interfering with the long-term groundwater remediation facility, which is still under construction. During the site visit, stakeholders reviewed the construction progress and discussed potential options for increasing the extraction of chromium-6 contaminated groundwater in the floodplain. Construction of the groundwater remediation facility is expected to be completed in 2025, followed by long-term operation and maintenance of the system.



Inspection of Colorado River Floodplain Extraction Well Site at the PG&E Topock Chromium-6 Groundwater Remediation Project

Manage the Power System

Metropolitan staff was notified by Metropolitan’s Transmission Operator (TOP) AEPCO (the Arizona Electric Power Co-Operative) that AEPCO will be subject to an audit of their NERC compliance program by WECC, the regional entity responsible for ensuring compliance with reliability standards in the Western US. Although this audit will not affect Metropolitan directly, Metropolitan has multiple “delegated tasks” related to TOP operating standards that may be subject to data requests from the auditor. AEPCO will receive data requests from the auditor in September 2023 and will have an on-site visit in January 2024.

Prepare for Future Legislation and Regulation

On July 28, staff sent a letter to Senators Feinstein and Padilla asking them to support a tailored exemption for water and wastewater treatment facilities from liability under the Comprehensive Environmental Response, Compensation, and Liability Act (CERCLA). This is the second letter in recent weeks seeking to influence the Senate Environment and Public Works Committee’s draft bill on PFAS. The letter emphasized that, absent an exemption, the Environmental Protection Agency’s (EPA’s) proposals to designate certain PFAS as hazardous substances under CERCLA may unintentionally burden water and wastewater utilities with cleanup costs for contamination that they did not cause or contribute to. Staff will continue to engage both Congress and EPA with respect to regulating PFAS.

On August 3, staff submitted comments to the EPA regarding whether to designate the precursors to PFOA and PFOS, as well as seven additional PFAS as hazardous substances under CERCLA. The seven additional PFAS are PFBS, PFHxS,

PFNA, Gen X, PFBA, PFHxA, and PFDA. Staff commented that the EPA should consider updated occurrence data and develop robust and reliable analytical methods before making any regulatory determination for the affected PFAS. In addition, staff requested that the EPA explore other regulatory pathways for PFAS rather than CERCLA, as well as follow the “Polluter Pays” principle and make additional funding available for treatment and cleanup costs. Staff will continue to monitor and engage in potential actions to regulate PFAS.

On August 15, staff submitted written comments to the State Water Resources Control Board’s Division of Drinking Water in response to the state’s proposed maximum contaminant level (MCL) for hexavalent chromium of 10 micrograms per liter (µg/L). While offering support for the proposed MCL and the two-to-four-year compliance period, the letter raised concerns about the true cost of compliance, the availability of funding to ensure full compliance, and recommended the inclusion of an alternative treatment technology to make compliance easier for some utilities. Staff will continue to monitor and engage in this rulemaking process.

Metropolitan submitted a comment letter to on August 15, responding to the state’s proposed maximum contaminant level (MCL) of 10 parts per billion for hexavalent chromium.

Enhance Support Infrastructure at the Desert Facilities

Staff is on target to complete construction efforts to improve the Desert facility infrastructure by constructing 37 carport canopies to protect the residents’ vehicles from the intense desert sunlight and heat. The project began with constructing 17 footings and canopies at Gene and Copper Basin. Staff continued this work at Iron Mountain and completed 14 more last month. Staff is currently at Hinds and will complete the last six installations by the first week in September. The work includes concrete footing placement for the canopies needed to anchor the structures and protect them from damage by the frequent wind events experienced at the Desert facilities.



Curb rebar completed for Home 215 at Hinds pumping plant



Canopy completed for Home 224 at Iron Mountain pumping plant

Advance Education and Outreach Initiatives

On August 2, a tour of the Water Quality Laboratory was provided for board members and staff from Three Valleys Municipal Water District.

On August 10, staff provided an update on PFAS monitoring and regulatory developments to the Public Information Office Working Group.

On August 14, staff also presented an update on Reservoir Management to the Engineering, Operations, and Technology Committee. The presentation included updates on problematic cyanobacterial blooms in Lake Skinner and Diamond Valley Lake, the impact of low alkalinity water in the East Branch of the State Water Project, storm impacts such as increased lake turbidity, and the need for continued adaptation in the face of climate change.

Operations

(continued)

Monthly Update as of:

8/31/2023

<u>Reservoir</u>	<u>Current Storage</u>	<u>Percent of Capacity</u>
<i>Colorado River Basin</i>		
Lake Powell	8,878,023	37%
Lake Mead	8,898,000	34%
<i>DWR</i>		
Lake Oroville	2,873,523	81%
Shasta Lake	3,530,951	78%
San Luis Total	1,771,418	87%
San Luis CDWR	980,835	92%
Castaic Lake	307,775	95%
Silverwood Lake	68,140	91%
Lake Perris	86,348	66%
<i>MWD</i>		
DVL	649,006	80%
Lake Mathews	157,583	87%
Lake Skinner	37,228	85%



Hoover Dam

Information Technology

Project Highlights

Wi-Fi Upgrade Project (Eagle Rock, Soto, Jensen, & Diemer)

A project is underway to improve Wi-Fi capabilities at several facilities. The first facilities scheduled for this work include Eagle Rock, Soto Street, Jensen Water Treatment Plant, and Diemer Water Treatment Plant. The goal of this project is to address the current Wi-Fi challenges at these locations, and to install a Wi-Fi network that will boost productivity and user satisfaction in these critical areas. The field work with a Wi-Fi vendor was conducted during the weeks of August 7 thru August 16. Once a Wi-Fi design package is received and approved, installation will start and the project is expected to be completed by the end of 2024.

Automatic Meter Reading (AMR) Upgrade Project

Automatic Meter Reading (AMR) is used to capture and transmit water meter data. The current AMR system has been in place for over 15 years and a project is underway to replace and upgrade the AMR system. The first phase of this project consisted of a pilot study to evaluate four communication technologies to facilitate communications from each meter site to Metropolitan's business network and has been completed. The next phase of planned work includes installing four 900 MHz master stations and about 350 radio modems at each water meter location.



Real Property

Provide right-of-way planning, valuation, and real property acquisition support services for the protection and reliability of existing infrastructure.

Obtained a permanent pipeline easement from The Metro Gold Line Foothill Extension Construction Authority to preserve existing rights following a City of Pomona vacation resolution affecting Metropolitan's Upper Feeder pipeline.

Obtained a six-month entry permit from a private owner to replace 30" corrugated metal pipe with a polyethylene pipe on a segment of the San Diego 4 and 5 Pipeline in Fallbrook, California. This will help to ensure pipeline reliability and prevent future corrosion. The replacement of this drainage culvert prevents erosion on both the property owner's and Metropolitan's property.

Obtained a permanent easement from a private owner to support the relocation of a portion of the Santa Monica Feeder in Beverly Hills. This easement will ensure continuous and reliable water delivery, protect Metropolitan's facilities, and eliminate encroachments imposed by property developers.

Foster staff training and development.

Completed Metropolitan's Agreement Administrator Certification Training.

Core Business: Real Property Acquisition, Management, and Revenue Enhancement

Provide valuation, land management, and real property disposition support services for the maximum return or use of Metropolitan-owned land and facilities.

An entry permit has been issued to Southern California Edison (SCE) for access and construction purposes comprising 5.8 acres near Lake Skinner. The permit will help facilitate the replacement of power poles.

A three-party license agreement has been executed with the United States Navy and Hayday Farms for military training purposes within 159 acres currently leased by Metropolitan to Hayday Farms. Military troops will conduct training exercises at the site with the express consent of Hayday Farms.

Efficiently maintain and operate assets not related to the treatment and distribution of water.

Metropolitan's recreation partners at The Diamond Valley Lake East Recreation Area made their parking lots available to support emergency coordination efforts for the Bonny Fire in Anza that burned 2300 acres. Valley-Wide Park at DVL served as the incident command post for Cal-Fire operations, and the DVL Marina parking lot was used for emergency vehicle storage and inspection. There were no impacts to recreational activities.

District Housing Maintenance and Management.

Pre-occupancy repairs on two district houses were completed during this reporting period. Repairs to these houses consisted of new flooring, lighting, appliances, paint, installation of dishwashers and garbage disposals, and deep cleaning. Desert housing maintenance staff also completed tenant-requested work orders consisting of air conditioning unit repairs, irrigation repairs, fencing repairs, and replacement doors.

Desert Housing and Recreation Interim Action Plan (DHRIAP) has been implemented and work continues on several projects.

With the completion of all carport installations at Gene and Iron Mountain, carport installation efforts have transitioned to Hinds. All concrete work is complete, and assembly has begun. All carports at Hinds are expected to be complete by September 8.

The renovation of house 04-G continues as asbestos abatement has now been completed and interior demolition work has started. All new electrical is being run throughout the house and the new air conditioning system has been installed. The exterior painting has also been completed.

The renovation of house 71-G has begun with asbestos and lead abatement now complete. Interior demolition work is now occurring as well as general cleanup.

The addition of the second bathroom at house 25-I has started. Plumbing work has been installed and concrete has been placed. The house is currently awaiting lead paint abatement before the bathroom addition can progress. Abatement is scheduled for September 5–6.

Security

Project Highlights

Security and Emergency Response

Metropolitan Security management presented Crime Prevention Through Environmental Design (CPTED) principles and recommendations to the Metropolitan Change Control Board (CCB). Security is currently partnering with environmental specialists to develop master specifications for defensive planting landscape guidelines for facility entrances and perimeters to better defend critical assets from trespassing and associated street crimes.

Initially developed in the 1970s, CPTED is a multi-disciplinary approach to deterring criminal behavior using natural access control and surveillance, territorial reinforcement, and proper maintenance. CPTED principles include:

- Power-efficient LED security lighting
- Water efficient defensive plants that deter trespassing
- Proper landscape maintenance
- Facility cleanliness
- Securing valuable equipment

Initial CPTED implementation throughout Metropolitan has reduced property crimes, catalytic converter thefts, and other costly loss events. Integrating CPTED as a design standard within all projects will enhance employee safety and critical infrastructure security.



Cost-effective implementation of basic CPTED principles can deter theft, trespassing, and costly crime losses.

Security and Emergency Response

Metropolitan Security staff partnered with Department of Homeland Security (DHS) Cybersecurity and Infrastructure Security Agency (CISA) to conduct an Infrastructure Visualization Platform (IVP) assessment of the Jensen Water Treatment facility.

The IVP, a data collection and presentation medium, combines immersive high-resolution camera and video imagery with geospatial information and hypermedia data of critical facilities to enhance critical infrastructure security planning, protection, and response efforts.

These panoramic images increase our operational readiness while providing maps, viewpoints, and diagrams to assist first responders during an emergency. Similar to Google Earth Street view, it allows security specialists to document:

- Critical facility approach and exit routes
- Lighting
- Facility entrances
- Loading docks
- Parking garages
- Other key structures

The IVP team also collects data on obstructions and restrictions that would affect the approach of emergency response vehicles and equipment to the site and street/parking accessibility in proximity to building access points.



Example of IVP capabilities (Courtesy of DHS)

Security Partnership

Security Management Unit (SMU) staff recently took part in a significant strategic partnership event, which was organized and guided by the Intelligence Division of the Federal Bureau of Investigation (FBI) and focused on the water sector. It encompassed a comprehensive analysis of the ever-evolving threats faced by critical infrastructure, provided an intelligence-driven threat briefing, and featured a panel discussion centered around the continual evolution of threats and the strategies employed for mitigation.

Notable event highlights:

- Facilitated meaningful engagement with officials from both the FBI and the Cyber and Infrastructure Security Agency (CISA), operating within the Department of Homeland Security (DHS), as well as from representatives from multiple water and wastewater agencies and other participants.
- The collective presence and collaborative nature led to an exchange of enlightening discussions and insights, which underscored the dynamism of the threat landscape.
- Innovative approaches being adopted to counteract these challenges were shared.
- The importance of coordinated efforts in safeguarding critical infrastructure were emphasized.

As part of our ongoing commitment to enhancing security measures, we are keen to apply the valuable knowledge gained from this event to further strengthen our strategies and readiness. In the world of security, intelligence is paramount, and such partnerships are instrumental in reinforcing our collective resilience against emerging threats.



The event facilitated meaningful engagement with officials from both the FBI and CISA, operating within DHS

Finance and Administration



Finance

Maintain Strong Financial Position

Provide timely and discerning financial analyses, planning, and management to ensure that forecasted revenues are sufficient to meet planned expenses and provide a prudent level of reserves consistent with board policy.

Manage risk to protect Metropolitan's assets against exposure to loss.

The Risk Management Unit completed 50 incident reports communicating instances of Metropolitan property damage, liability, workplace injuries, regulatory visits, and spills.

Risk Management completed 44 risk assessments on contracts, including professional service agreements, construction contracts, entry permits, special events, and film permits.

In July, an information report on Overview of Metropolitan's Finances was provided to the Finance, Audit, Insurance, and Real Property Committee.

Business Continuity

Facilitate district-wide planning and training to prepare employees and managers to effectively carry out critical roles and recover mission essential functions thus ensuring continuity of operations and resiliency in the event of a disaster.

Manage the Business Continuity Management Program in accordance with Operating Policy A-06.

- Participated in the Emergency Operations Center (EOC) activation to monitor and respond to any operational impacts from Hurricane Hilary and the 5.1 magnitude earthquake centered in Ojai.
- Met with Finance and Emergency Management to discuss the roles and responsibilities of the EOC Finance Section during an emergency.
- Facilitated the quarterly Business Continuity Steering Committee meeting.
- Continued working with the Fusion software vendor to make updates to the guided workflows.
- Worked with the Finance Sections and Administrative Services to update their Business Continuity Plans.
- In conjunction with the core planning team, continued working on the district-wide Local Hazard Mitigation Plan.
- Continued to build out and add content to the Business Continuity SharePoint site.

Financial Management

Manage Metropolitan's finances in an ethical and transparent manner and provide consistent, clear, and timely financial reporting. Update Metropolitan's capital financing plans and work with rating agencies and investors to communicate Metropolitan's financial needs, strategies, and capabilities, thus ensuring that Metropolitan has cost effective access to capital markets and the ability to finance ongoing future needs. In addition, actively manage Metropolitan's short-term investment portfolio to meet ongoing liquidity needs and changing economic environments.

Record and report the financial activities of Metropolitan in a timely, accurate, and transparent manner to the Board, executive management, member agencies, and the financial community.

Finance and Administration

(continued)

- Water Transactions for July 2023 (for water delivered in May 2023) totaled 93.4 thousand acre-feet (TAF), which was 31.3 TAF lower than the budget of 124.7 TAF and translates to \$95.4 million in receipts for July 2023, which was \$27.4 million lower than budget of \$122.8 million.
- In July 2023, Accounts Payable processed approximately 3,600 vendor invoices for payment.

Prudently manage the investment of Metropolitan's funds in accordance with policy guidelines and liquidity considerations.

As of July 31, 2023, Metropolitan's investment portfolio balance was \$1.2 billion; in July 2023, Metropolitan's portfolio managers executed 3 trades.

In July 2023, Treasury staff processed 1,122 disbursements by check, 27 disbursements by Automated Clearing House (ACH), and 130 disbursements by wire transfer. Treasury staff also processed 70 receipts by check, 30 receipts by ACH, and 62 receipts by incoming wires and bank transfers.

In addition, there were 7,659 P-One Card transactions, totaling \$1.2 million, recorded in the July bank statement.

Administrative Services

Accomplishments

On July 15, the Metropolitan Water District of Southern California received the 2023 Achievement of Excellence in Procurement (AEP) Award. Metropolitan was recognized for organizational excellence in public procurement. The application, submitted by the Business Management Team on behalf of the Contracting Services Unit, received high scores in criteria designed to measure innovation, professionalism, productivity, e-procurement, and leadership attributes in the field of procurement. Administrative Services Section, specifically the Contracting Services, takes great pride in this prestigious award that focuses on practical documented work and recognizes Metropolitan's positive contributions toward advancing the public procurement profession. Metropolitan's achievement will be formally recognized at the National Procurement Institute's 2023 Annual Conference in October.

Human Resources

HR Priorities

Partner with Metropolitan leadership to support learning, development, and adaptive workforce planning initiatives.

In August, 230 Metropolitan employees attended virtually facilitated classes, including Effective Nonverbal Communication, Mechanics of Writing, Using Email Effectively, Contract Administration, and Recruitment Procedures.

LinkedIn Learning, Metropolitan's online e-learning content platform, was accessed for such topics as Working with your Strengths and Weaknesses, Generative AI, Pitching Yourself for Opportunity, Resolving Conflicts, and Effective Delegation.

The Organizational Development & Training Unit (OD&T) facilitated a team building for the Chemistry Unit focusing on Connective Communication and Team Motivation, for 25 employees and 4 managers. OD&T also beta-tested a new training on Effective Meeting Facilitation for 20 External Affairs employees.

Seek diverse, high-quality talent, and establish partnerships to discover additional outreach opportunities that aid in staffing positions.

Recruitment received new staffing requisitions for five positions, resulting in 205 positions currently in recruitment.

HR Core Business: Provide Excellent Human Resources Services

Administer all HR services with efficiency and a focus on customer service excellence, consistency, and flexibility.

The Business Support Team planned, organized, and coordinated a "Smart Grocery Shopping and Label Reading" wellness webinar. The live webcast was held on August 22, 2023, and was hosted by Kaiser Permanente. The webinar invited employees to explore ways to shop smarter to meet their health needs and learn to read food labels to make healthy choices. Employees were also invited to create a realistic action plan that will help them take positive steps toward taking control of their health.

HR Core Business: Comply with Employment Laws and Regulations

Effectively administer all Human Resources policies, programs, and practices in compliance with applicable federal and state laws and Metropolitan's Administrative Code, Operating Policies, and Memorandum of Understanding.

In July, 17 new workers' compensation claims were received. Only five employees are currently off work because of an industrial injury or illness. This reflects Metropolitan's effort to accommodate injured workers, while enabling them to be productive and on the job. Staff continues to address accommodations, coordinate treatment, and work closely with our Worker's Compensation Third Party Administrator, Tristar Risk Management.

Finance and Administration

(continued)

HR Metrics	June 2023	August 2023	Prior Month July 2023
Headcount			
Regular Employees	1,779	1785	1,783
Temporary Employees	25	33	29
Interns	0	1	1
Recurrents	18	18	18
Annuitants	24	25	24

	August 2023	July 2023
Number of Recruitments in Progress (Includes Temps and Intern positions)	205	217
Number of New Staffing Requisitions	5	40
	August 2023	July 2023
Number of Job Audit Requests in Progress	13	7
Number of Completed/Closed Job Audits	1	1
Number of New Job Audit Requests	7	2

Transactions Current Month and Fiscal YTD (includes current month)			
<u>External Hires</u>	<u>FY 22/23 Totals</u>	<u>August 2023</u>	<u>FISCAL YTD</u>
Regular Employees	116	10	19
Temporary Employees	36	6	13
Interns	0	0	1
Internal Promotions	72	4	13
Management Requested Promotions	149	14	29
Retirements/Separations (regular employees)	98	7	12
Employee-Requested Transfers	19	2	2

Departures

Last	First Name	Classification	Eff Date	Reason	Group
Bell	Robert	Prgrm Mgr-Engineering	7/5/2023	Retirement - Service	ENGINEERING SERVICES GROUP
Bryant	Garry	Pr Project Controls Specialist	7/5/2023	Retirement - Service	ENGINEERING SERVICES GROUP
Helton	John	O&M Tech IV	7/7/2023	Retirement - Service	WATER SYSTEM OPERATIONS GROUP
Nixon	Roderick	O&M Tech IV	7/5/2023	Retirement - Service	WATER SYSTEM OPERATIONS GROUP
Smith	Lynda	Pr Resource Specialist	7/8/2023	Retirement - Service	BAY DELTA INITIATIVES
Tucker	Paul	Team Mgr-Geodetics and Mapping	7/5/2023	Retirement - Service	ENGINEERING SERVICES GROUP
Turk	Russell	Team Mgr-Corrosion Control	7/6/2023	Retirement - Service	ENGINEERING SERVICES GROUP

Diversity, Equity, and Inclusion

Tribal Outreach & Engagement

On August 2–3 DEI Tribal Engagement staff participated in the University of Nevada, Reno’s (UNR) “Discover Your Path!” college preparatory camp. The camp is coordinated through the university’s Tribal Students Program with the objective of getting high school students ready for college by enhancing their curiosity of discovery in several areas. The camp was hosted at the 4-H camp at Lake Tahoe. Representatives from various industries presented career possibilities in their respective industries. Metropolitan presented its “Indigenous Pathways” program explaining the different career entryways to those students who are interested in water careers. The camp was attended by over 160 students from various tribes across the states of Nevada, California, and Arizona.



Business Outreach & Community Engagement

On August 11, Metropolitan staff attended the Building Industry Association (BIA) Southern California Water Conference, Responding to Water Extremes, in Ontario, CA. BIA Southern California Water Conference has provided a forum where government officials, water management representatives, business leaders, and community stakeholders come together to share best practices and discuss ideas to meet the challenges of serving the growing demand for water while protecting our natural resources.

On August 16–18, Metropolitan staff attended the 44th Annual California Hispanic Chamber of Commerce Convention in Costa Mesa, CA. The Annual Statewide Convention gathers Hispanic business owners, corporate executives, and members from over 120 local and regional Hispanic chambers of commerce and diverse business associations statewide, as well as from throughout the nation. It offers all attendees the opportunity to establish strategic, long-lasting partnerships through direct personal engagement, sharing of best practices, dialogue, networking, workshops, and more.



Finance and Administration

(continued)

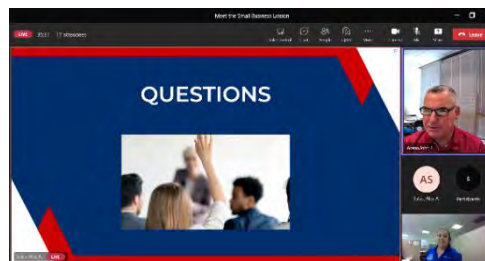
On August 11, Metropolitan staff attended the National Association of Women Business Owners Awards and Board Installation Dinner.

On August 22, Metropolitan staff attended the National Association Women of Business Owners—Ventura County (NAWBO-VC) Women Power Lunch Hour in Oxnard, CA, which featured an interactive panel discussion of accomplished, highly knowledgeable women professionals. Stories of success and inspiration were shared, and practical advice was given to the small business attendees.

On August 23, Metropolitan staff attended the Building Connections Construction Event sponsored by Women Business Enterprise Council-West



On August 23, Metropolitan staff presented at the “Meet the Small Business Liaison” SBA Webinar for 8(a) companies.



On August 25, Metropolitan staff attended the Asian Business Association Annual Match-Making Session.

On August 25, Metropolitan staff attended the SoCal Small Business Construction Expo (SBCX) at the Long Beach Convention Center in Long Beach, CA. SBCX brings Small/Underrepresented Business contractors together with public and government agencies, prime contractors, and specialty trades from the state to build relationships, create opportunities, and strengthen our industry.



On August 31, Metropolitan facilitated the Business Outreach's Listening Session "Voice of the Community." This was a meeting of Metropolitan's Resource Groups engaging in the conversation on outreach and contract improvement with the Disadvantaged Business Enterprise Community.

External Affairs



External Affairs

Highlights

Metropolitan welcomed program participants from the California African American Water Education Foundation. Chair Ortega and Director McCoy joined the group on a tour of Pure Water Southern California, followed by discussions on water supply and infrastructure reliability. (August 9)

Vice Chair Sutley provided opening remarks at a symposium Metropolitan jointly sponsored with the Council for Watershed Health entitled, "From the Ground Up: Soil & Water Resiliency for Future Generations." Jane Davidson, an author, advocate and Chair of Wales Net Zero 2035, was the keynote speaker. (August 23)



Left: CAAWEF Tour at Pure Water Southern California; Center: Vice Chair Sutley at Council for Watershed Health Symposium; Right: Chair of Wales Net Zero 2035 Jane Davidson speaking to the sold-out event on soil resiliency at Metropolitan's headquarters

Directors Cordero, Dennstedt, Dick, Fellow, Lefevre, McMillan, GM Hagekhalil and staff attended, and Metropolitan sponsored the Urban Water Institute conference, which included panels on Colorado River, climate change, public trust, and water supply reliability. (August 23–25)

GM Hagekhalil was featured in a profile story in the Los Angeles Times covering a day of events and meetings with staff, member agencies, and state legislators. The article also highlighted the district's efforts to develop a Climate Adaptation Master Plan to ensure water reliability and affordability. (August 23)

Metropolitan and the state's Save our Water campaign partnered to sponsor an Angel City Football Club game and a pre-game FanFest event promoting water conservation. Vice Chair Sutley, GM Hagekhalil, and California Secretary for Natural Resources Crowfoot were recognized on the pitch at the start of the game. (August 27)



FCA Secretary of Natural Resources Crowfoot, GM Hagekhalil, and Vice-Chair Sutley at Angel City Football Club BeWaterWise game

Legislative Services

Federal

Senator Padilla (D-CA) and Representative Levin (D-CA-49) introduced the Water Efficiency, Conservation, and Sustainability Act of 2023. The bill authorizes new EPA grant programs to help water agencies address water loss and augment existing programs for water efficiency upgrades. GM Hagekhalil provided a quote for the press release announcing the introduction of this bill.

State

GM Hagekhalil and AGM/CEAO Zinke met with Governor Newsom's Cabinet Secretary Ann Patterson to discuss Metropolitan's policy, legislative, and budget priorities. (August 15)

Staff continues to work on key policy bills including AB 1572 (D-Friedman), Metropolitan's co-sponsored bill to promote sustainable landscapes by banning the use of potable water to irrigate non-functional turf on commercial and industrial properties. Legislative action on a proposed climate bond will resume next year, and Metropolitan will continue to advance its priorities to fund recycled water, conservation, infrastructure investments, and dam safety.

Local

Staff provided briefings to the field representatives for Assemblymember Santiago (D-Los Angeles). (August 2)

Metropolitan sponsored and staff attended the Building Industry Association of Southern California Water Conference. More than 200 community and private industry leaders discussed building strategies to respond to changing climate conditions and deliver safe, clean, water to residents and businesses. (August 11)

Director Quinn and AGM Zinke attended Central City Association's Elected Officials reception, which recognized elected officials serving downtown Los Angeles. (August 17)

Metropolitan staff presented, monitored, and/or participated in 56 webinars, virtual meetings, and events this month with community organizations, trade associations, and local officials on water-specific topics.

Media and Communications

Staffed an LA Times editorial board meeting with GM Hagekhalil and NRDC's Ed Osann that resulted in an editorial supporting AB 1572 (D-Friedman) and applauding Metropolitan's longstanding leadership to promote turf removal and conservation.

Arranged interview with Associated Press Reporter Amy Taxin and Colorado River Resources Manager Hasencamp on the 24-month study for the Colorado River Basin.



Coordinated in-studio Spanish-language interviews for Univision by External Affairs' Castillo, Cetina, and Gonzalez-Robertson on conservation, water quality, Pure Water, and weather extremes. The segments are part of \$250,000 in added value that was negotiated as part of the summer water conservation advertising campaign.

Editorial: Say goodbye to grass that's only there for looks. California can't afford to waste water



Responded to questions from Mercury News' Paul Rogers regarding Metropolitan's sponsorship of AB1572.

Provided information to CNN and LA Times about Metropolitan's preparation for Tropical Storm Hilary.

Arranged interview with Chair Ortega and Municipal Water Magazine.

Met with member agency PIOs to review messaging for Climate Adaptation Master Plan. (August 31)

Press Releases

- Joint release with State of California on Angel City Football Club BeWaterWise game. (August 27)
- Holding statements regarding USBR's 24-month study and US EPA's release of PFAS monitoring results.



Creative Design

Debuted animated commercial spots in English, Spanish and Chinese as part of summer conservation advertising campaign. Spots were designed, scripted, and produced by Metropolitan staff. Spots are airing on local stations KTLA-TV and KMEX-TV, cable stations, and the Los Angeles Dodgers and Angels game broadcasts.

Produced a series of four influencer videos featuring Angel City Football Club players Ali Riley and Jasmyne Spence for posts on water conservation for renters.

Designed exhibits and multilingual materials for upcoming MetWorks outreach events.

Redesigned HR Benefits Guide and videos for open enrollment.



Website

Generated more than 62,000 views on mwdh2o.com with careers, Board of Directors and finance/budget pages the most visited. Saw increased engagement on bewaterwise.com, with nearly 88,000 views.

Upgraded mwdh2o.com site's content management system and improvements to keyword search functionality; refreshed rotating banners on bewaterwise.com to reflect summer conservation advertising; updated content for the Innovative Conservation Program, and Water Savings Incentive Program webinar.



Social Media

Rolling out new social media posts in English, Spanish, and Chinese for summer conservation advertising campaign highlighting rebates on flow monitors and availability of water efficiency surveys.



*Top: National Backflow Prevention Day.
Bottom: National Water Quality Month*

Posted four graphics as part of National Water Quality Month highlighting Metropolitan staff's work in water quality and the 2023 Annual Water Quality Report.

Featured WSO employees at field sites and the role they play in ensuring supplies are safe and clean through the prevention of backflow and cross-connections for National Backflow Prevention Day.

Highlighted Metropolitan's partnership with tribal nations on important water conservation issues and agreements by featuring a quote from Quechan Tribal Council President Joaquin Jordan for a post on the United Nations' Indigenous Peoples Day.

Spotlighted photos on social media from Diamond Valley Lake and Lake Skinner to celebrate National Fishing Month.

Featured the district's new Zero Emissions vehicles and the Board's approval of the naming of the Grace F. Napolitano Pure Water Southern California Innovation Center; both posts received solid engagement.

Initiated soft launch of district's account on Threads social media platform.

Public Outreach and Member Services

Conducted inspection trip of Diemer and Orange County water infrastructure for Orange County Grand Jury with Directors Dick and Seckel. (August 29)

Pure Water Southern California

Provided tours in August for Job Corps, California African American Water Education Foundation, LA County Sanitation Districts' Civil and Mechanical Design Team, Friends of the Los Angeles River, Strength-Based Community Change, and LADWP Innovation Team.

Held meetings to discuss conveyance system with city of Pico Rivera, Caltrans staff, and Marathon Refinery and a briefing for Long Beach community leaders.

Participated in meetings of the Member Agency Outreach Workgroup.

Pure Water Southern California staff toured Pure Water Las Virgenes and met with LVMWD staff. (August 31)



Social media post featuring MWD's zero emissions vehicles

Other Outreach Activities

- Provided tour of Weymouth for Three Valleys MWD board and staff. (August 2)
- Notified and thanked residents upon completion of Etiwanda Pipeline repair work and the Second Lower Feeder Reach 3A project.
- Notified residents and businesses of the start of work on the Second Lower Feeder Reach 3B in Lomita.
- Hosted a public meeting for the California Department of Toxic Substances Control on rulemaking concepts for assessing administrative penalties for hazardous waste violators. (August 16)
- Discussed Rialto Feeder with officials from the city of Claremont. (August 17)
- Provided Mills plant tour for Inland Empire Black Worker Center Pre-Apprenticeship program. (August 28)
- Provided director inspection trip to Jensen. (August 11)
- Coordinated Member Agency Managers meeting. (August 31)

Education and Community Relations

Sponsored the Boys & Girls Clubs of Brea-Placentia-Yorba Linda Watershed Education program.

Education staff interacted with more than 100 teachers, students, and adults this month through in-person and online meetings and events.

The Water Is Life student art show was displayed at the Jurupa Community Services District and Elsinore Valley Municipal Water District.

Staff facilitated a water awareness discussion and Pure Water Southern California tour for the Los Angeles Service Academy, a program for high school juniors who have expressed an interest in public, civic, and civil service. (August 4)



August 2023 LASA Water Journeys Tour



Jurupa Community Services District's lobby

Sustainability, Resilience and Innovation



Sustainability, Resilience, Innovation and Environmental Planning

SRI Core Activities

One Water Stewardship Committee

The Chief of Sustainability, Resilience, and Innovation (SRI) Officer presented at the One Water Stewardship Committee. A detailed update was presented to the Committee as follows:

- Climate Action Plan initiatives and updates
- Climate Adaptation Master Plan for Water (CAMP4W)
- Environmental and sustainability planning
- Grants and research
- Innovation pilots and programs
- Employee trainings and events

Equity, Inclusion and Affordability Committee

The SRI Office worked with the Diversity, Equity, & Inclusion (DEI) office Legal, and Water Resource Management (WRM), on a presentation of a *Survey of Member Agency Programs offered to Disadvantaged 21-2562 Communities (DAC) as defined in Water Code 79505.5*. During this presentation Legal defined the parameters in which Metropolitan works in contrast to member agencies and investor-owned utilities (IOU). A variety of member agency DAC programs were presented including ones that use non-rate revenue and consortia of partner organizations. The presentation was followed by a Panel on Affordability which provide the Board with a variety of perspectives from environmental, agriculture, retail/wholesale water agency, and front-line communities.



Panelists at the Equity, Inclusion and Affordability Committee
(left to right: Jennifer Capitolo, Ismahan Abdullahi, Mary Matava, Dan Denham, Maura Allaire, and Mauricio Guardado)

Sustainability, Resilience and Innovation

(continued)

Affordability Panelists

- [Mauricio Guardado](#), General Manager United Water Conservation District
- [Maura Allaire](#), Assistant Professor, University California Irvine School of Social Ecology
- [Dan Denham](#), General Manager at San Diego County Water Authority
- [Jennifer Capitulo](#), California Water Association
- [Ismahan Abdullahi](#), National Executive Director at Muslim American Society: Public Affairs and Civic Engagement; SDCWA board member
- [Mary Matava](#), President & Agronomist at Agri Service Inc

Member Agency Managers Monthly CAMP4W Meeting

The Chief SRI Officer lead this month's Member Agency Managers Monthly Climate Adaptation Master Plan for Water (CAMP4W) Meeting, where an overview of the deliverables and first three Working Memos (WM) were provided. Member agency managers received copies of *WM 1: CAMP4W Process* and *WM2: CAMP4W Themes* before the meeting and received *WM3: IRP Needs Assessment Summary* after the meeting. The meeting facilitator called on each participating member agency for feedback with a concerted effort to elevate previously unheard opinions.



Long-Term Regional Planning Process Business Modeling

The Chief of SRI Officer worked with moderator Kit Batten to host a board discussion on Climate Adaptation and Resilience Planning with a panel of utility experts. The panel discussed the use of climate science and data to inform evaluative criteria for near-term strategies and longer-term adaptive management. Affordability challenges were discussed as well as measuring and considering the cost of inaction.



Utility Panelists at Long Term Regional Planning Process Business Modeling

Sustainability, Resilience and Innovation

(continued)

Utility Panelists

- Nolie Templeton, Ph.D., P.E., Planning Analyst in Central Arizona Project's Colorado River Programs Department
- Stephen Torres, Principal Manager at Southern California Edison
- Nathan Bengtsson, Senior Manager of Climate Resilience at Pacific Gas & Electric Company

SRI Lunch and Learn

This month's Lunch and Learn featured presentations by reserve managers from the Southwestern Riverside County Multi-Species Reserve and the Lake Mathews Multiple Species Reserve. Approximately 50 staff members learned about Metropolitan's multi-species habitat protection by holistic consideration of entire ecosystems rather than a narrow focus on the environmental protection of individual species.



Metropolitan's First Zero Emission Vehicles

SRI and WSO coordinated for the procurement of Metropolitan's first zero-emission vehicles, two Ford F150 Lightning trucks, with an unveiling at the Weymouth Filtration Plant on August 16. The vehicles align with meeting Metropolitan's Climate Action Plan goals to reduce emissions and provide early credit toward compliance with California's new regulatory requirement that 50 percent of purchases of medium and heavy-duty vehicles be ZEVs beginning on January 1, 2024.



Unveiling of Metropolitan's First Electric Vehicles – Two Ford F150 Lightning Trucks (left) and Liz Crosson, SRI Officer and Heather Collins, WSO Assistant Group Manager (right)

Sustainability, Resilience and Innovation

(continued)

Fleet Charger Selection for Union Station

On August 29, SRI, Facilities Operations, Rideshare, and Engineering staff met with a vendor to discuss the purchase of electric chargers for fleet vehicles at Union Station. These two charging stations will be used for the first zero-emission fleet vehicles pilot. Once the pilot has concluded, staff will evaluate data gathered for the purchase of chargers for fleet vehicles and for employees using chargers as part of Metropolitan's Rideshare Program.



SRI, Facilities, and Engineering meet with a vendor for electric chargers at Union Station

August Executive Task Force

The ZEV Executive Task Force met on August 29 to continue the Metropolitan-wide coordinated effort to transition from internal combustion engines to zero emission vehicles. SRI's consultant, GNA, presented a roadmap which provided an overview of how its recommendations of how Metropolitan should implement the transition, including the resources required to do so.

Phoenix Motor Cars Factory Tour

SRI and WSO visited the Phoenix Motors factory in Anaheim on August 23. Phoenix produces zero-emission battery electric vehicles and equipment including utility trucks and electric forklifts that could potentially be used by Metropolitan for compliance with CARB regulations.



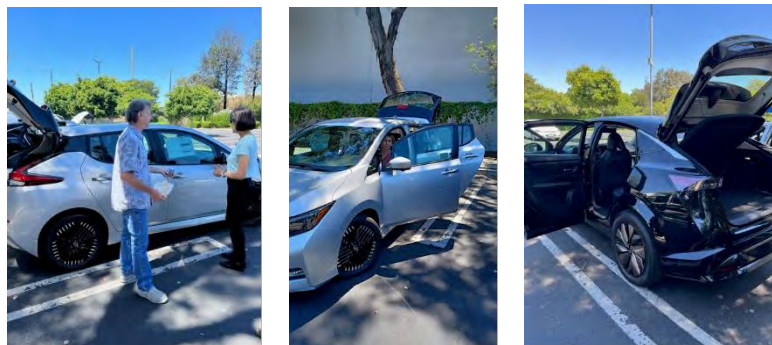
WSO and SRI visit the Phoenix Motor Cars Factory in Anaheim

Electric Vehicle Trade Show

SRI and WSO attended an electric vehicle trade show sponsored by Enterprise in Gardena on August 23. Employees were able to see the latest electric vehicles available in the marketplace and meet with vendors that provide zero-emission products including vehicle data tracking devices and vehicle customization options.

Sustainability, Resilience and Innovation

(continued)



SRI and WSO viewing the latest electric vehicles and products

Green Procurement

SRI and Administrative Services completed a revision to Operating Policy, G-05, Procurement of Goods and Services, to incorporate Metropolitan's commitment to sustainable procurement practices. Once the revision has been approved, the Contracting Procedures Manual will be updated to provide employees with guidance to make sustainable procurement decisions.

Centralized Grants Management Office

During FY 22–23 Metropolitan staff successfully received awards in the amount of \$143.4M. So far, for FY 23-24 Metropolitan has received award announcements in the amount of \$64.2M. Additional grant funding opportunities the Centralized Grants Management Office is working on this month include:

- State Climate Resilience Implementation- \$3M for workforce development for the Water Education Training for the Trades pilot program
- NOAA Regional Climate Resilience Challenge - Climate Adaptation planning and infrastructure up to \$75M

Innovation

Innovation, Pilots, and Emerging Technologies Updates



On August 30, Tech4 met with WaterStart, Metropolitan's Engineering, Electricians, Operations, and SRI Innovation Teams at Metropolitan's Hinds Pumping Facility to kick-off the Tech4 Pilot co-funded by WaterStart. Tech4 is a maker of Arc Quencher technology, safety equipment that eliminates arc flash potential. Tech4 was first seen at a Technology Approval Group (TAG) meeting, and Michael Thomas thought that the technology protected employees and eliminated the need to wear heavy protective clothing. The Tech4 team also came to Metropolitan through the Feedback Forum, and the Innovation team was impressed with the safety elements that Tech4 has developed for

Sustainability, Resilience and Innovation

(continued)

their technology. The company was created after a friend of the founder died from an electric flare and the founder wanted to protect others. A team from WaterStart, ESG, WSO, and SRI Innovation has been assembled for the Metropolitan Tech4 Pilot led by Michael Thomas.



On August 24, Metropolitan’s SRI, Engineering, WRM, and Operations Teams sponsored, presented, and exhibited at Sustain SoCal’s WATER SOLUTIONS 8 (WS8) annual conference at the Cove at UCI in Irvine. This year’s event focused on exploring real life strategies and innovations in reuse, desal, storm water, energy nexus, contamination, investor and policy trends and big data in Southern California and the surrounding region. The Keynote topic for the event was *Predicting Atmospheric Rivers Across Timescales*. Over 200 attendees participated in the event, which included a Fast Pitch Entrepreneur Competition and presentations by Metropolitan’s *Adrian Hightower on An Overview of Regional Climate Adaptation Master Plan for Water* and *Ha Nguyen on Implementing Battery Storage at Weymouth Water Treatment Plant* and presentations from Santa Margarita Water District, Moulton Niguel Water District; Riverside Public Utilities; Santa Ana Regional Water Quality Control Board, and many more Orange County and Southern California Agencies.



Sustainability, Resilience and Innovation

(continued)

Environmental Planning Section

Core Business: Environmental Planning and Regulatory Compliance Support

Bay Delta Initiatives

Delta Conveyance Project

- Continued supporting preparation of the responses to comments for the draft environmental impact report (EIR) for cultural resources and tribal cultural resources environmental categories on behalf of Public Water Agencies.

Webb Tract Multi-Benefit Mosaic Landscape Project

- Coordinated with Bay-Delta Initiatives staff and provided environmental planning support for the project.
- Organized biological surveys to assist in developing the strategy for California Environmental Quality Act (CEQA) and permitting compliance and in support of preparation of the environmental documentation.

Engineering Services Group

Drought Relief Projects

- Provided design support for the Inland Feeder-Rialto Pipeline Intertie and Badlands Tunnel Surge Tank projects.
- Provided CEQA and endangered species compliance support for the Inland Feeder-San Bernardino Valley Municipal Water District (SBVMWD) Foothill Pump Station Intertie Phase I.

Etiwanda Pipeline Relining Project

- Continued oversight of project construction monitoring and mitigation compliance.

Perris Valley Pipeline

- Continued oversight of project construction monitoring and mitigation compliance.

Prestressed Concrete Cylinder Pipe (PCCP) Rehabilitation Program

- Continued oversight of project construction monitoring and mitigation compliance for the PCCP Lake Mathews Valve Storage Project and PCCP Second Lower Feeder Reaches 3A and 3B.

Progressive Design Build (PDB) Projects

- Provided CEQA and scheduling guidance for the Lake Mathews New Pressure Control Facility and Lake Mathews Electrical Upgrades projects.

Pure Water Southern California

- Revised the EIR schedule to incorporate project description revisions necessitated by a proposed upsized pipeline between Whittier Narrows and Canyon Spreading Grounds.
- Prepared draft technical report for noise.
- Continued tribal cultural resources consultation.

Weymouth Water Treatment Plant and La Verne Site Improvements Program EIR

- Conducted internal review of the administrative draft program EIR in preparation for public release and review next month.

Sustainability, Resilience and Innovation

(continued)

- Coordinated with the City of La Verne to schedule and organize a public meeting regarding the draft EIR on October 4, 2023.

Design Support

- Completed design review and environmental clearance for Headquarters Courtyard Improvements project.

Construction Monitoring

- Initiated construction monitoring for the Colorado River Aqueduct Conduit Structural Protection Project.

External Affairs Group

- Participated in California Council for Environmental and Economic Balance (CCEEB) Natural Resources Task Force (NRTF) monthly meeting.
- In coordination with Legal and WSO staff, prepared and submitted comments on National Marine Fisheries Service and U.S. Fish and Wildlife Service's Proposed Revisions to the Endangered Species Act Regulations for Interagency Cooperation (Docket No. FWS-HQ-ES-2021-0104).

Sustainability, Resilience, and Innovation Office

- Staff attended the Ecological Society of America Annual Conference, which highlighted projects and efforts to better engage public and private sector ecologists.

Climate Action Plan (CAP) Monitoring and Reporting

- Continued preparation of template for CEQA greenhouse gas analysis for new projects relying on the CAP.
- Continued monitoring the Battery Energy Storage Systems (BESS) for compliance with the CEQA mitigation monitoring and reporting program.
- Continued assisting in Scope 3 emissions data collection efforts in support of the CAP implementation phase, which includes development of an electronic database system to capture utilities (waste, wastewater, debris) usage, an employee commute survey, and policies for net zero waste at Union Station.

Water System Operations Group

- Submitted emergency permit applications to the U.S. Army Corps of Engineers, Regional Water Quality Control Board, and California Department of Fish and Wildlife in support of the Foothill Feeder Exposed Pipeline Repairs and Casa Loma Siphon No. 1/San Jacinto Pipeline Exposed Pipeline Repairs.
- Conducted biological resources surveys for vegetation and road maintenance activities at Etiwanda Reservoir, Lytle Creek, and Service Connection USG-03.
- Provided environmental analysis and clearance for road/site grading activities along the Rialto Feeder and Upper Feeder and at the Washington St. Pressure Control Structure site.
- Initiated environmental support for urgent repair projects to the conveyance and distribution system resulting from storm damage in late August.

Surface Mining and Reclamation Act (SMARA) Compliance

- Coordinated with the State Mining and Geology Board for the first annual inspection of Metropolitan's borrow sites subject to SMARA.

Sustainability, Resilience and Innovation

(continued)

Reserve Management

Lake Mathews Multiple Species Reserve

- Performed boundary line survey along private property adjacent to the reserve, where a broken fence has facilitated illegal access to the reserve.
- Initiated installation of 1,600 feet of fencing along the west side of Lake Mathews Drive south of Cajalco Road to prevent trespassing in an area not previously fenced.
- Reserve Patrol staff responded to three small wildfires of less than a quarter acre on the reserve, two caused by vehicles along adjacent roads and one of unknown origin. Cal Fire contained each fire, and no significant damage occurred to natural resources or reserve infrastructure.



Fence Break at Lake Mathews Reserve



Fence Installation at Lake Mathews Reserve

Southwestern Riverside County Multi-Species Reserve

- Conducted mowing and weed whipping for fire and habitat management along Reserve roads and around the Alamos Schoolhouse.
- Maintained water guzzlers to provide water source for wildlife.
- Maintained wildlife camera traps and downloaded photographs, including a mountain lion photographed in the Middle Creek area of the reserve near Lake Skinner.
- Maintained brown-headed cowbird traps, bringing a total number of birds that have been captured through July to 62. The brown-headed cowbird is a brood parasite that lays its eggs in the nests of other birds such as native and endangered bird species.
- The Alamos Schoolhouse interpretive center was open on Saturdays and the Reserve Interpreter hosted a bird watching event.

Sustainability, Resilience and Innovation

(continued)



Sunset at Southwestern Riverside County Multi-Species Reserve

External Document Reviews

- Reviewed and commented on a Memorandum of Agreement in compliance with Section 106 of the National Historic Preservation Act for the Cajalco Road Widening Project, adjacent to Lake Mathews.
- Reviewed 11 CEQA notices for external projects and prepared comment letters for those that may affect Metropolitan facilities and/or operations.

Real Property Support

- Provided CEQA analysis and determinations in support of nine real property agreements.
- Completed Addendum No. 8 to the Eastside Reservoir Project EIR in support of the San Diego Canal Trail Project, reviewed specifications and construction drawings, and provided environmental clearance for Phase I of the project.



Metropolitan's Mission is to provide its service area with adequate and reliable supplies of high-quality water to meet present and future needs in an environmentally and economically responsible way.

700 N. Alameda Street, Los Angeles, CA 90012
General Information (213) 217-6000
www.mwdh2o.com www.bewaterwise.com

General Manager: Adel Hagekhail
Office of the GM (213) 217-6139
OfficeoftheGeneralManager@mwdh2o.com