



General Manager's Monthly Report



Activities for the Month of October 2022



Table of Contents

Message from the GM	3
Strategic Priorities Update	4-6
Executive Summary	7-8
Upcoming Board Items	9
Reflections	10
Water Resources and Engineering	
Water Resource Management	11-15
Bay-Delta	16-17
Colorado River	18
Engineering	19-24
Operations	
Water System Operations	25-47
Information Technology	48
Real Property	49-52
Security	53-54
Finance and Administration	
Finance	55-56
Human Resources	57-59
Diversity, Equity and Inclusion	60
External Affairs	61-65
Sustainability, Resiliency and Innovation	66-72
Equal Employment Opportunity	73

Message from the General Manager

I recently met with the Delta Stewardship Council (DSC) and was inspired and encouraged by the reception and feedback that I received.

The DSC was created to advance the state's coequal goals for the Delta. That mission -- to provide a more reliable statewide water supply while protecting, restoring and enhancing the Delta ecosystem -- means that the Council is constantly working to balance goals from diverse interests.

As General Manager it has been a paramount priority of mine to find common ground with other agencies, organizations, leaders and communities, and perhaps nowhere is this more important than in the Delta.

Metropolitan's own Delta policies – updated and approved by the Board in October—affirm our support for actions to further the coequal goals established in the Delta Reform Act. Metropolitan's One Water approach also recognizes the need to find balance among water interests; water resource planning must account for community and ecosystem needs, while managing finite resources for water resilience and reliability.

I spoke to the DSC about the investments Metropolitan is making in conservation and local resources and how these efforts are critical components that can help the state achieve its policy to reduce reliance on the Delta. This discussion is central to our work to address climate change, plan for the future and consider a proposal to modernize Delta conveyance. That's exactly why it was timely to talk with the DSC and why I have invited them to visit our operations, and see first-hand the tremendous work Metropolitan and our member agencies are doing to advance water use efficiency and invest in local supply projects.

As Metropolitan leads the way toward greater statewide water resiliency, we must collaborate in pursuit of multiple and concurrent objectives to expand ecosystem restoration, improve flood control, shore up water supplies, benefit communities in the Delta, make all water use as efficient as possible, sustainably manage our groundwater, and more.

One speaking engagement can't solve all our challenges, but I'm confident it represents one more step to build trust and understanding in order to work together toward the common good.

We are one,

Adel



**“It takes both sides to
build a bridge.”**

- Fredrik Nael, Author



Strategic Priorities Update

The General Manager's Strategic Priorities guide actions in key areas of focus, investment, and transformation for Metropolitan.

Empower the workforce and promote diversity, equity, and inclusion

Build a safe, inclusive, and accountable workplace where all employees feel valued, respected, and able to meaningfully contribute to decisions about their work.

The EEO investigative unit is fully established with all investigative positions filled, an important benchmark in the formation of our new EEO Office. EEO policies have been developed or updated and approved, and all documents addressing the California State Auditor's EEO recommendations were submitted by the October 20, 2022, deadline. Our new case database system is now live, which will improve case management, information retention and reporting.

Our management development program is implementing sessions on the ADA "Interactive Process" to improve awareness and responsiveness to accessibility needs.

Prepare and support the workforce by expanding training and skill development and updating strategies to recruit and retain diverse talent at a time when Metropolitan's needs are evolving and employee expectations about the workplace are changing.

Human Resources implemented a new Recruitment and Selection Operating Policy and Procedures document in compliance with the State Audit recommendation.

Staff is meeting and fact-finding to identify improvements to Metropolitan's Apprenticeship Program and this month visited the Department of Water Resources' Apprenticeship Program training facility in Bakersfield and the HireLAX pre-apprenticeship program.

Adapt to changing climate and water resources

Provide each member agency access to an equivalent level of water supply reliability through necessary adaptive implementation of the IRP findings.

Overall State Water Project use remains under the volumetric limits set in collaboration with the SWP-dependent areas.

As part of work to identify and analyze drought action portfolios, Metropolitan met with IEUA and Burbank Water and Power to review results of feasibility and hydraulic analysis of potential projects.

An RFP for Wadsworth Pumping Plant Bypass was advertised with contract award slated for December 2022. Progress was made to advance two Inland Feeder projects, the Inland Feeder/Rialto Pipeline Intertie and the Inland Feeder Badlands Tunnel Surge Protection.

In support of stabilizing Lake Mead and Colorado River supplies, Metropolitan, along with its agricultural partners and the state of California, sent a letter to the leadership in the Department of the Interior affirming a commitment to conserve up to 400,000 acre-feet of Colorado River water annually from 2023 through 2026. This conservation would be in addition to California's commitment to add up to 350,000 acre-feet annual contributions under the 2019 Drought Contingency Plan. Metropolitan is also working with its member agencies to get additional signatories on the Colorado Basin Urban Water Efficiency MOU. At the time of writing, Western, Eastern, and Foothill have signed on, and several others are in the approval process.

Metropolitan issued an RFP for a consultant to consider the potential of expanding opportunities in Southern California for brackish water and seawater desalination. This assessment will support the analysis of water resource opportunities, identify innovative technologies, and prioritize environmental protection and climate resilience in the analysis.

The Board adopted a resolution encouraging action to reduce or eliminate irrigation of non-functional turf with potable water and providing member agencies and municipalities with a model ordinance that can be adapted for their use.

Advance the long-term reliability and resilience of the region's water sources through a One Water approach that recognizes the interconnected nature of imported and local supplies, meets both community and ecosystem needs, and adapts to a changing climate.

Metropolitan made a lot of progress on regional water resilience and the Climate Action Plan this month.

The Climate Registry awarded Metropolitan its highest honor, the All-Star Award, recognizing Metropolitan's commitment to curbing the impacts of climate change. Metropolitan was recognized for reporting all relevant greenhouse gas (GHG) emission sources and activities, and for establishing a public GHG reduction goal with the Climate Action Plan.

The Pure Water Southern California project received an \$80M lump sum earmark grant from the state. The team has prepared a December 2022 board letter to request authorization to spend the grant. The letter will include updates on the status of program activities, cost analysis, and early delivery projects. The RFP for the Program Manager is in procurement, with proposals due November 9. The schedule for the conveyance pipeline in Carson and surrounding cities will be advertised in December 2022. The NOP for the program was published on September 30 with a 45-day comment period. Four scoping meetings are being held at various times and dates. Metropolitan is meeting with other area agencies (LADWP, LASAN, WBMWD, WRD, et al.) to explore opportunities to coordinate water reuse systems and schedules.

Staff has initiated briefings of Metropolitan Board and member agencies regarding the Draft Environmental Impact Report for the proposed Delta Conveyance Project. Staff has also supported the state Department of Water Resources' public review meetings completed in September and other engagement efforts.

To advance watershed science and a holistic approach to the Delta, we completed and published two scientific peer review articles regarding Bay Delta fisheries that will help inform management actions and scientific literature/record. Through the Collaborative Science and Adaptive Management Program, we're advancing a structured decision-making process on salmon recovery and Delta smelt, which has been undertaken jointly by water users, resource agencies, and NGOs.

The South Pasadena Direct Use Stormwater Pilot project was approved by the City Council of South Pasadena on October 19.

The Office of Sustainability, Resiliency and Innovation met with group managers to launch the process for developing a district-wide SRI Strategy. The team will next brief and engage section managers throughout the agency. Staff is also setting up a Natural Gas Audit process for all Metropolitan facilities. The SRI Office and Fleet Services also kicked off Metropolitan's ZEV Executive Task Force Meeting to develop the roadmap for the transition to zero-emission vehicles as envisioned in the Climate Action Plan.

Protect public health, the regional economy, and Metropolitan's assets

Proactively identify, assess, and reduce potential vulnerabilities to Metropolitan's system, operations, and infrastructure.

As part of the "Great California Shakeout," staff conducted a district-wide earthquake exercise. Metropolitan's Emergency Operations Center and two field Incident Command Posts participated in the exercise, along with five member agencies. This hybrid (in-person and remote) EOC activation tested various communication tools and technologies that will further enhance Metropolitan's readiness for emergencies.

Security staff partnered with Southern California Edison (SCE) to exchange information and lessons learned associated with current and future security matters. New, cutting-edge technologies were discussed that would help enhance Metropolitan's security posture.

Metropolitan will be participating in an Asset Management Partnership project facilitated by Isle Utilities. This multi-phase effort will include a baseline assessment of our asset condition and needs, workshops with other utilities to discuss strategies, and identification of advanced technologies that best meet utility needs for future development.

Construction and renovation of the Cybersecurity Operations Center began in late October. A vendor has been brought on to improve security measures for software, hardware, and data systems. In addition, IT staff successfully migrated the Oracle E-Business Suite as part of the Data Center Modernization Project, working closely with stakeholders to ensure minimal impacts to business processes.

Apply innovation, technology, and sustainable practices across project lifecycles (design, construction, operations, maintenance, and replacement).

ESG, WRM, WSO, and SRI attended the Singapore PUB meeting at Pure Water with the General Manager to exchange information and expertise. SRI and others participated in the Western Water Technical Advisory Group for peer-to-peer conversations and evaluating emerging technologies related to monitoring and water quality.

SRI and Procurement developed a first draft of a Green Procurement Policy.

Partner with interested parties and the communities we serve

Grow and deepen collaboration and relationships among member agencies, interested parties, and leaders on the issues most important to them and toward mutual and/or regional benefits.

Staff is surveying best practices of other organizations to advance communication and outreach through improved website management, sponsorships and outreach, and better engagement of communities and organizations in board and policy processes. We expect initial findings in the next 30 to 60 days.

The Board approved the Project Labor Agreement in October. The PLA was immediately added as a condition to bidding on the following solicitations: 1) SLF Reach 3b Relining; 2) Wadsworth Bypass Pipeline; and 3) Perris Valley Tunnel.

Reach underserved communities and non-traditional interested parties to better understand their needs and ensure their inclusion in decision making.

Staff conducted initial analysis of tribal interests in Metropolitan's territory and areas of interest and is coordinating between DE&I and External Affairs. October's initial meeting of the Underserved Communities Committee starts a new forum for board engagement in the area, and staff has identified characteristics of underserved communities to assess the population within Metropolitan's service area to inform the work of the committee.

Executive Summary

This executive summary is added to this report to provide a high-level snapshot of a key accomplishment from each area of the organization. Detailed information is reported in the pages following this summary.

Bay-Delta Initiatives

In October, staff co-authored two scientific publications reporting on results of studies funded by Metropolitan and other funding partners. The publications reported on results of a study evaluating the effects of pesticide contaminants on juvenile Chinook salmon and on the results of longfin smelt surveys conducted in estuaries north of the San Francisco Estuary.

Chief Financial Officer

The business continuity unit spearheaded Metropolitan's ShakeOut earthquake drill on October 20. This involved an employee-wide drop, cover, and hold drill at 10:20 am in all locations as well as a test of the MetAlert Emergency Notification System.

Colorado River

Metropolitan, along with other agencies in California, sent a letter to the leadership of the Department of the Interior of their intent to conserve up to 400,000 acre-feet of water to be added to Lake Mead each year from 2023 through 2026.

Diversity, Equity & Inclusion

The DE&I Office, while still being built, was busy during the month of October driving DE&I engagement across many areas of Metropolitan. The Business Outreach Team helped better support small businesses by participating in the OneLA procurement event and at a Regional Hispanic Chamber of Commerce matchmaking event, connecting small businesses with greater procurement opportunities. We partnered with the SRI office to ensure the success of US Water Alliance's "Imagine A Day Without Water" commemoration at Metropolitan in addition to supporting a HireLAX pre-apprenticeship program graduation, a model for what is possible at Met with the passage of the Project Labor Agreement (PLA). Last, but certainly not least, we advanced tribal outreach and engagement, building trust in our tribal communities by participation in the Colorado River Indian Tribes' NatiVisions annual film festival and meeting with the CRIT Career Development Office to initiate conversation around building a tribal workforce development plan to build awareness and a pathway for students seeking employment opportunities at Metropolitan.

Engineering Services

Metropolitan's Board approved a landmark project labor agreement (PLA) in October. Engineering took immediate action to ensure that the three projects currently in the advertisement for bids phase (Second Lower Feeder PCCP Rehabilitation—Reach 3B, Perris Valley Pipeline Interstate 215 Crossing, and the Wadsworth Pumping Plant Inland Feeder Intertie) will be covered by the PLA. In coordination with the DE&I office, Engineering is developing plans to reach out to small businesses and the local community for these projects.

Equal Employment Opportunity Office

The EEO Office has submitted all documents relevant to the California State Audit recommendations, gone live with its new case management system and hired its final member to complete the investigative team. The EEO Office has also met federal compliance by posting the Equal Employment Opportunity Commission's new "Know Your Rights" posters throughout Metropolitan facilities.

External Affairs

Metropolitan sponsored an exhibit booth at the Taste of Soul event to share conservation, rebate, and other information with tens of thousands of attendees. Chairwoman Gray and Directors Luna and Williams attended the festival. (October 15)

Human Resources

Human Resources completed the creation of a Recruitment and Selection procedures document in compliance with the State Audit recommendations. Staff completed revisions to Operating Policy H-04 Abusive Conduct & Workplace Violence Prevention and Operating Policy H-10 Recruitment and Selection in response to State Audit recommendations.

Information Technology

In support of the successful and highly public Upper Feeder shutdown, IT GIS staff created an application that allowed staff to search for a specific address and quickly determine whether it was in the affected area. In addition, the Enterprise GIS/CAD team performed spatial analysis on the population and cities affected by the shutdown in support of the planning efforts.

Real Property

The 1932 Act authorized the federal government to grant Metropolitan lands to build and operate the Colorado River Aqueduct but included a reversionary interest clause. The clause reverts properties to the federal government if they are not used for the original intended purpose. The 2019 John D. Dingell Jr. Conservation, Management and Recreation Act and the Contributed Funds Agreement authorized by the Board on October 2020 allow BLM to release the federal government's reversionary interest in these lands by quitclaim deeds. Recorded deeds bolster Metropolitan's records of clear legal title to lands granted to it by congressional action and help to prevent unlawful use of these lands by third parties.

Security Management

Metropolitan's Security Management Unit attended the in-person Fall 2022 Quarterly Los Angeles Area Unmanned Aircraft System (UAS) Working Group hosted by the University of Southern California (USC) Safe Communities Institute (SCI). Attendees included representatives from Department of Homeland Security's Cybersecurity and Infrastructure Security Agency (CISA), Port of Long Beach, FAA, LAPD, Universal Studios, LA County Fire, and Southern California Edison. All attendees successfully completed the Unmanned Aircraft System Program (UASPD) Development course, which was designed by FEMA to aid first responders and public agencies in the successful development, implementation, and sustainment of a department's small UAS (sUAS) program.

Sustainability, Resiliency and Innovation

The SRI Office launched its district-wide process to develop an SRI Strategy for Metropolitan at the monthly Group Managers Meeting and co-chaired the first ZEV Executive Task Force Meeting with Fleet Manager John Poli. SRI hosted the "Imagine a Day Without Water" Employee Open Mic, with almost 200 Metropolitan employees, in solidarity with water utilities nationwide. The Chief SRI Officer participated in the WRM CRA tour and discussed water operations, fallowing programs, conservation efforts and land management issues with staff and partners along the aqueduct. The team also played a key role with WRM in the Board's Resolution on non-functional turf model ordinance language and in conversations with member agencies on the Colorado River Urban Water Efficiency MOU.

Water Resource Management

Staff made several presentations at the WaterSmart Innovations Conference and Expo in Las Vegas, highlighting Metropolitan's water efficiency incentive programs. Metropolitan hosted the "One Water Salinity Management Innovation Summit 2022", with over 70 water resource and salinity management stakeholders participating. The SWP-dependent area continues to meet targeted use through the Emergency Water Conservation Program. To prepare for a dry start in 2023, staff requested 291 TAF of human health and safety supplies from DWR after coordinating with member agencies to assess their needs.

Water System Operations

As part of the "Great California Shakeout" on October 20, staff conducted a district-wide earthquake response exercise while assessing Metropolitan's Emergency Response Plan. Metropolitan's Emergency Operations Center and two field Incident Command Posts participated in the exercise, along with five member agencies from the San Gabriel foothill areas. This was a hybrid (both in-person and remote) EOC activation testing various communication tools and technologies that will further enhance Metropolitan's readiness for future emergencies.

Upcoming Board Items

ANTICIPATED KEY ITEMS OF FOCUS – NOT AN EXHAUSTIVE LIST
SCHEDULE SUBJECT TO CHANGE

December	<ul style="list-style-type: none">• Inaugural Update on Climate Action Plan Implementation• Report on Colorado River Evaporation Loss Projections• Authorize using State Funding for Pure Water Southern California• Adopt Legislative Priorities and Principles for 2023• Public Hearing on SB60• Desert Housing Update• Board Committee Restructuring (by Chair Elect)
January	<ul style="list-style-type: none">• Committee Slate Introductions and Approval• Discussion on Water Allocation and Emergency Drought Actions
February	<ul style="list-style-type: none">• Board Report on Portfolio of Recommended Actions for State Water Project Dependent Areas• Authorize Colorado River Protection Volume Agreements
March	<ul style="list-style-type: none">• Report on Alternatives being Considered by Reclamation in Supplemental EIS for Colorado River Basin Operations

The schedule of the following upcoming board items has not yet been determined:

- Metropolitan Storage Portfolio Workshop
- Water Supply Resiliency Plan Workshop
- Delta Conveyance Project Follow-up Workshop



CERTIFICATE OF ACCEPTANCE

This is to certify that the interest in real property conveyed by this deed dated July 25, 2022, from **THE UNITED STATES OF AMERICA** (Grantor) to **THE METROPOLITAN WATER DISTRICT OF SOUTHERN CALIFORNIA** (Grantee), a public corporation, affecting certain rights to land previously conveyed to Grantee by Grantor under the authority of the 1932 Act, by Decisions of the United States Department of the Interior, General Land Office, shown on Exhibit A-5, Serial No. 1.A 051362, as filed with the United States Department of the Interior, General Land Office, and approved December 4, 1933, is hereby accepted by the undersigned officer on behalf of the Board of Directors of Grantee pursuant to authority conferred by Metropolitan Water District Administrative Code Section 8201 and Board of Directors action, and the Grantee consents to recordation thereof by its duly authorized officer.

**THE METROPOLITAN WATER DISTRICT
OF SOUTHERN CALIFORNIA**

By Adel Hagekhalil
General Manager

Date 9/26/2022

☒ Transaction authorized by General Manager per Administrative Code Section 8201.

☒ Transaction authorized by Board of Directors on October 13, 2020.

“This has been a true multi-decade collaborative effort by multiple groups at Metropolitan, including Legal, Geodetics, Survey, GIS, External Affairs, and Real Property.”

***Jennifer Ryan,
Sr. Real Estate Representative***

PROGRAM DESCRIPTION

As part of the Act of June 18, 1932 (1932 Act), the Federal Government granted Metropolitan certain lands totaling approximately 72,000 acres for the construction and operation of the Colorado River Aqueduct (1932 Act Lands). However, when granting the 1932 Act Lands, the Federal Government reserved for itself a reversionary interest such that if the lands ceased to be used for Metropolitan’s purposes, the ownership reverts to the Federal Government. This reversionary interest has negatively impacted Metropolitan by , at times, raising concerns as to Metropolitan’s authority to defend the land against trespass, encroachment, and development. The Metropolitan-championed 2019 John D. Dingell Jr. Conservation, Management and Recreation Act and the Contributed Funds Agreement, authorized by the Board in October 2020, allow U.S. Department of the Interior, Bureau of Land Management (BLM) to release the Federal Government’s reversionary interest in these lands by quitclaim deeds. This program works with BLM to draft and obtain the signed quitclaim deeds, have the corresponding certificates of acceptance signed by Metropolitan, and the deeds recorded in the counties.

IMPORTANCE TO METROPOLITAN

These recorded quitclaim deeds bolster Metropolitan’s records of clear legal title to lands granted to it by Congressional action and used by Metropolitan for decades for vital water supply and conveyance purposes and help to prevent unlawful use of these lands by third parties.

MEMORABLE MOMENT

In October, Metropolitan reached a project milestone in getting the first set of quitclaim deeds signed by BLM, and having the corresponding certificates of acceptance signed and recorded with San Bernardino and Riverside counties. These quitclaim deeds together cover approximately 5,700 acres of the 72,000 acre 1932 Act Lands. The top photo depicts the ceremonial signing that took place with General Manager Adel Hagekhalil and the project team. The bottom photo shows an executed certificate of acceptance.

Water Resources and Engineering

Water Resource Management



Improve Succession Planning and Staff Development

Water Resource Management (WRM) staff participated in a 3-day inspection trip of the Colorado River conservation programs. The trip enhanced staff knowledge of the long-term following program with the Palo Verde Irrigation District (PVID), the conservation programs Metropolitan paid for at Imperial Irrigation District (IID), and efforts to control salinity in the Colorado River with a visit to the Yuma Desalter. A mix of new and seasoned WRM staff engaged with the staff of other agencies, including learning from one of the tenants of Metropolitan's farms at PVID. Staff also engaged with two State Water Project (SWP) contractors—Desert Water Agency and Coachella Valley Water District—who do not have a physical connection to the SWP infrastructure but have a great partnership with Metropolitan to exchange supplies. The partnership allows Metropolitan to receive SWP supplies while Metropolitan delivers Colorado River water via the Colorado River aqueduct to them. Finally, WRM staff had the opportunity to visit Metropolitan's Whitsett pumping plant, took a boat ride at Copper Basin, and spent the night at Metropolitan's Gene Camp. This inspection trip strengthened intra-staff relationships and improved the staff's knowledge of the Colorado River situation.



WRM staff visited the Laguna Dam, 13 miles northeast of Yuma. The dam was built in the Colorado River in 1905 to divert water to the Yuma Project.

Ensure Reliable State Water Project (SWP).

Water Resource Management (WRM) staff submitted Metropolitan's 2023 initial State Water Project (SWP) water order to the California Department of Water Resources (DWR) to meet the October 1st SWP Contract deadline. The water order included a suite of schedules at various allocation scenarios, as well as a human health and safety (HH&S) schedule at 0% allocation. Based on DWR's guidelines on determining HH&S needs, Metropolitan's analysis shows approximately 291,000 acre-feet of HH&S need in 2023 under a 0% allocation scenario. These schedules provide DWR input for their modeling studies that, in part, determine the SWP allocation. DWR will announce the initial allocation for 2023 by December 1, 2022.

Ensure Access to Sufficient Water Supplies to Operate a Full Colorado River Aqueduct in Times of Drought.

Staff attended the fall Salinity Control Forum (Forum) Meeting in Lake Tahoe. Topics discussed included (1) a proposal to reduce the existing Salinity Control Program (Program) funding deficit by reducing the Program cost-share requirement from 30% to roughly 15% for salinity funding from the Natural Resources Conservation Service (NRCS); (2) a report that the ongoing six-month test of the Paradox Valley Unit (PVU) at 2/3-capacity has yielded no unusual seismic or well pressure results, suggesting that the U.S. Bureau of Reclamation (USBR) could decide to resume ongoing operation of the PVU at 2/3-capacity following the completion of the test in December; (3) progress toward the 2023 "Triennial Review," in which the Forum communicates to the U.S. Environmental Protection Agency (EPA) an assessment of the sufficiency of existing water quality criteria for salinity on the Lower Colorado River; and (4) updates from key federal agencies involved in the Program, including USBR, NRCS, the Bureau of Land Management (BLM), and the U.S. Geological Survey.

Implement Regional Conservation Program

Staff from Metropolitan's Water Efficiency Team (WET) attended the WaterSmart Innovations Conference and Expo held in Las Vegas, NV. The conference had more than 700 attendees and a full slate of presentations in the technical program. Several WET staff gave presentations on Metropolitan's water efficiency incentive programs, including the Turf Removal/Replacement programs, the Innovative Conservation Program grants, the expanded direct installation program with Southern California Gas Company, and an analysis of the efficacy of new residential leak detection devices. Archived presentations can be found on the conference website: <https://www.watersmartinnovations.com/> Several WET staff also participated in the Alliance for Water Efficiency Committee program and attended the evening reception on Tuesday before the conference.

Other conservation outreach activities include presenting at Moulton Niguel Water District's "H2O for HOA" event on the ways to identify and remove non-functional turf on homeowner association (HOA) property; serving as guest speaker at Whittier College Water Law, Policy and Politics class on the topic of municipal water use, water conservation, and water supply strategies to meet future demands; and chairing California Water Efficiency Partnership (CalWEP) program committee meeting where a range of topics was discussed including legislative framework, turf replacement, and conference topics.

WET staff hosted a virtual Program Advisory Committee (PAC) meeting via Zoom. The PAC is a forum for Metropolitan staff to receive input from member and retail agencies on the Conservation Credits Program (CCP) and to discuss potential changes to the incentive programs. Approximately 30 attendees discussed topics including pool cover incentives, cistern incentives for commercial and industrial consumers, and allowing artificial turf projects to be eligible for incentives. PAC proposals are submitted to WRM staff for consideration and may be presented to management or the Board for adoption if they are deemed acceptable or beneficial to the CCP.

Water Resources and Engineering

(continued)

Collaborate with Member Agencies, Water Agencies and Associations, and Provide Leadership for Policy Development, Advocacy, Outreach and Education

Staff continued implementing the Emergency Water Conservation Program (EWCP) to address severely limited SWP system water supplies. Since the June 1, 2022, start date, there has been a positive demand response across the SWP-Dependent Area. The affected member agencies continued to show reductions in purchases from Metropolitan compared with historical and projected levels, indicating consumer responsiveness with demand-cutting measures. Path One watering day limit compliance requirements remained at one day-per-week watering restrictions during October. Staff is continuously monitoring and reporting water use performance to the affected member agencies to ensure that SWP water usage stays on track to remain within the available supplies.

DWR continues to develop the California Water Plan (CWP) Update 2023. DWR hosted a virtual public webinar on October 18, 2022. The main goal of the webinar was to familiarize the public with the Draft Assumptions and Estimates Report (Draft A&E Report) for Update 2023. The Draft A&E Report describes key assumptions and estimates, data and data sources; improvements to analytical tools, methods, and approaches; and the supporting documents and companion State plans used to prepare the CWP Update 2023. DWR also launched the public comment period to seek public input on the information presented in the Draft A&E Report. Public comment to DWR is due no later than November 18, 2022.

The Association of California Water Agencies (ACWA) recently solicited participation in a working group to review and develop comments on the Draft A&E Report and future CWP publications. Metropolitan staff replied to ACWA with interest in participating in this working group. With DWR's recent release of the Draft A&E Report and scheduled overview presentation of the draft content of Update 2023 on October 27, staff believes that increased coordination with other stakeholders will help provide valuable and constructive input to DWR.

On October 26, Metropolitan hosted a salinity summit with the Southern California Salinity Coalition (SCSC). The "One Water Salinity Management Innovation Summit 2022" focused on how salinity affects and benefits One Water Supply development and how One Water supplies can also help manage salinity. The summit included panels on SCSC research and Regional Water Quality Control Board initiatives. The second half of the summit featured breakout sessions where participants identified current salinity challenges and potential solutions. Metropolitan staff presented at the summit and helped facilitate the breakout sessions. Over 70 water resource and salinity management stakeholders participated in the workshop.

Staff provided a recycled water legislation and regulation update to approximately 100 members at a joint Los Angeles and Orange County WaterReuse Chapter meeting at SoFI Stadium. Staff highlighted chaptered legislation and regulations that may impact the development of new recycled water programs.

Implement Future Supply Actions Funding Program.

Staff provided a support letter and in-person testimony on behalf of the South Coast Water District's (SCWD) Doheny Ocean Desalination Project (Project). On October 13th, the California Coastal Commission unanimously approved a Coastal Development Permit for the 5 MGD project. The Project also received support from several member agencies and other water agencies in South Orange County where the project is located. Several environmental and environmental justice groups opposed the project. SCWD received approval from the San Diego Regional Water Quality Control Board in March of this year. Additional approvals are needed from the State Lands Commission and

Water Resources and Engineering

(continued)

the California Department of Parks and Recreation. SCWD has applied for LRP funding for the project through the Municipal Water District of Orange County.

Promote Metropolitan's Technical Capabilities and Innovation Efforts to Advance the Understanding of Water Resources Management

Staff held an in-person knowledge transfer meeting with representatives of Singapore PUB and the Los Angeles County Sanitation District (LASCD) on October 10th at Metropolitan's Pure Water Southern California demonstration facility. The meeting covered challenges with implementing potable reuse and opportunities to collaborate on solutions. Attendees include leadership from all three utilities and culminated with a plan to expand collaboration between the three utilities. The meeting was organized through Metropolitan's Peer-2-Peer (P2P) agreement with Booky Oren Global Water Technologies.

During October, staff met with three companies with innovative technologies through Metropolitan's Technology Feedback Forum program. On October 11th, staff met with SABA, an Italian company with "smart" greenhouse technology. The off-the-grid capable greenhouse incorporates solar power and generates irrigation water with high-efficiency atmospheric water generators. On the 20th, staff met with Solar Water, a company in England that has developed a novel distributed Concentrated Solar Power (CSP) thermal system. The CSP system generates carbon-free energy that could be used to power a traditional seawater desalination system. Staff also met with Natural Ocean Wells, a California company developing a submerged seawater desalination technology that has the potential to reduce energy use and brine discharge impacts. Staff provided all three companies with connections to SoCal's innovation community.

Water Resources and Engineering

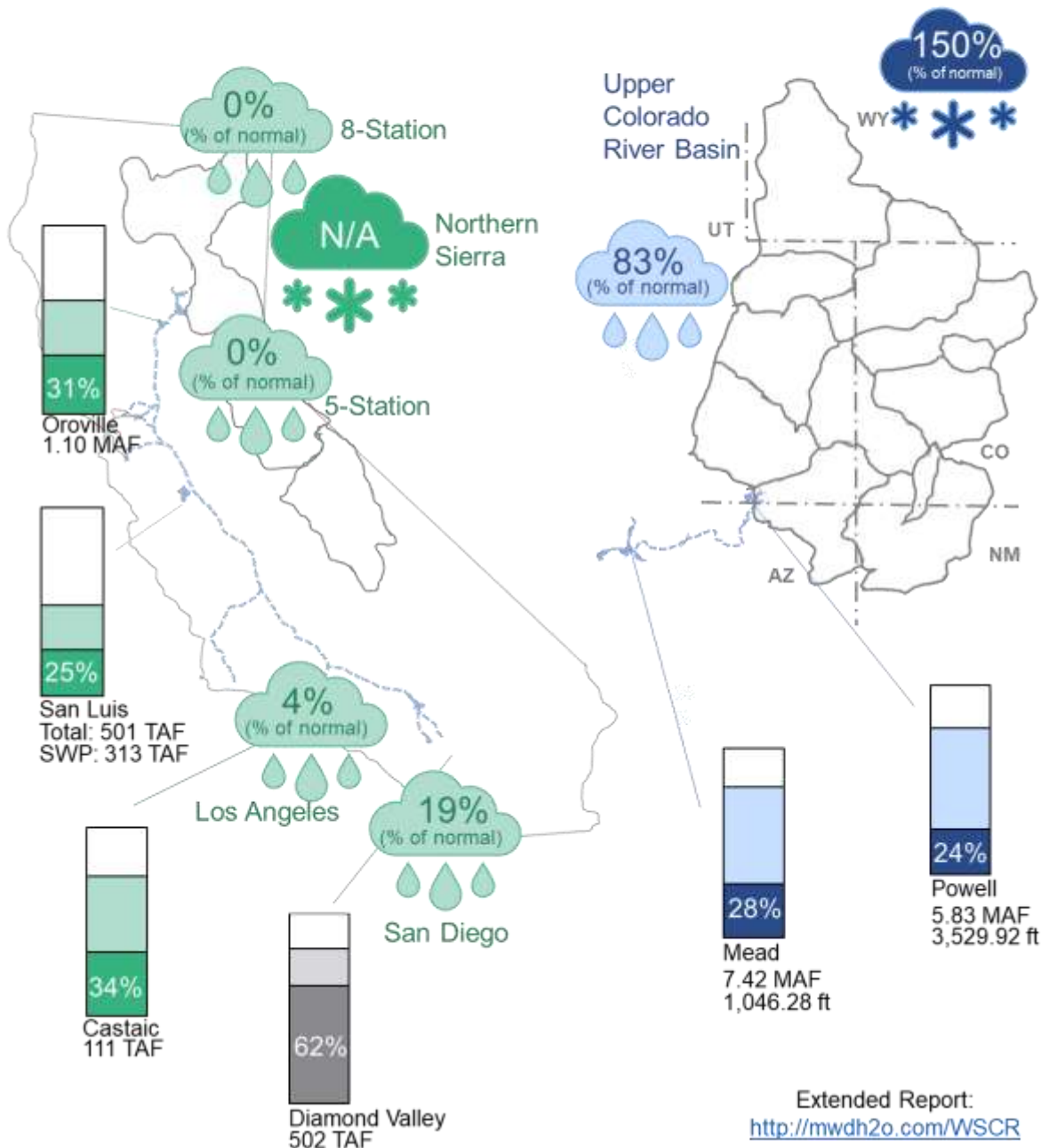
(continued)

State Water Project Resources

SWP Table A – 5% - 95,575 AF

Colorado River Resources

Projected CRA Diversions – 1,136,000 AF



As of October 31, 2022

Bay-Delta Initiatives

Project Highlights

Delta Conveyance

The Department of Water Resources (DWR) released the public Draft Environmental Impact Report (EIR) for the Delta Conveyance Project (DCP) on July 27, 2022. The Draft EIR describes project alternatives and potential environmental impacts and identifies mitigation measures to help avoid or minimize potentially significant impacts. The public comment period for the Draft EIR was extended from October 27 to December 16, 2022.

The U.S. Army Corps of Engineers, as part of its permitting review under the Clean Water Act and Rivers and Harbors Act, is preparing an Environmental Impact Statement (EIS) to comply with the National Environmental Policy Act and is planning to release the draft EIS for public review later this year.

Joint Powers Authorities

During the regularly scheduled board of directors meeting on October 20, the Delta Conveyance Design and Construction Authority (DCA) Board of Directors approved a resolution to adopt a policy to prevent discrimination, harassment, and retaliation for all employees, applicants, volunteers, and independent contractors working for and with the DCA. The DCA Board also approved a resolution extension authorizing virtual board and committee meetings pursuant to AB 361.

The Delta Conveyance Finance Authority (DCFA) received the audited financial statements for fiscal year 2021/22 at the regularly scheduled DCFA meeting on October 20, 2022.

Sites Reservoir

At their October meetings, the Sites Project Authority Board and the Sites Reservoir Committee approved a resolution commending Senator Nielsen for his dedicated service as a State Legislator and his ongoing support for the Sites Reservoir Project.

Science Activities

Senior Resource Specialist Dr. Shawn Acuña co-authored a scientific paper reporting on a study evaluating potential contaminant effects in juvenile Chinook salmon habitat in the Sacramento River watershed. The study was funded by a Proposition 1 grant with cost-share from Metropolitan. The paper is published in the journal *Environmental Pollution* and is titled "Dietary exposure to environmentally relevant pesticide mixtures impairs swimming performance and lipid homeostatic gene expression in Juvenile Chinook salmon at elevated water temperatures." The study found that Chinook salmon exposed to contaminants found in floodplain habitats exhibited dysregulated metabolic processes and reduced swimming behavior with elevated temperature. Results suggest that floodplain habitats developed to support salmon may need to account for contaminant effects, especially at higher temperatures.

Dr. Acuña also co-authored a paper published in the *San Francisco Estuary & Watershed Science* journal titled "[Estuarine Recruitment of Longfin Smelt \(*Spirinchus thaleichthys*\) North of the San Francisco Estuary](https://escholarship.org)" (escholarship.org). The study was funded by the State Water Contractors and Metropolitan, and it included

Water Resources and Engineering

(continued)

conducting surveys during 2019 and 2020 in ocean tributaries north of the San Francisco Estuary in Northern California to look for longfin smelt larvae. Longfin smelt larvae were detected in four of 16 estuaries surveyed that were all large estuaries north of Cape Mendocino, and larvae were not detected in smaller estuaries closer to San Francisco Bay. The survey results confirm historic surveys detecting the presence of longfin smelt and confirming that the smaller estuaries are used actively but intermittently by longfin smelt.

Delta Island Activities

Metropolitan is working with Reclamation Districts (RD) #756—Bouldin Island, RD #2025—Holland Tract, RD #2026—Webb Tract, and RD #2028—Bacon Island to complete installation of up to 88 magnetic flow meters on the most commonly used siphons to measure and report diversions consistent with SB 88—Water Diversion Measurement Compliance. During 2022, 25 meters have been installed as part of Phase 4 of the metering installation program. In addition, telemetry, battery solar panel support, and communication devices will be installed by November 2022. It is anticipated that the meter installation will be completed within budget and ahead of the Phase 4 completion date of December 2023. Staff is working with the RD engineering firm to evaluate installation of the remaining meters (Phase 5) on smaller and less used siphons on Metropolitan's Delta Islands.

On October 18, staff conducted a tour of Bouldin Island and Webb Tract for Delta Stewardship Council and Delta Science Program staff. The tour featured several activities including levee security, sustainable agriculture, research supporting listed species, and community engagement. Discussions at the tour highlighted opportunities for collaboration on science and the Delta Islands Adaptation Project addressing landscape-scale scenario planning.

Regulatory Activities

Staff continued to participate in the collaborative groups called for in the 2019 Biological Opinions for the State Water Project (SWP) and Central Valley Project, and in the 2020 Incidental Take Permit (ITP) for long-term operation of the SWP, to address science needs and inform management and operation of the water projects. As part of the ITP requirement to investigate alternatives for non-physical barriers at Sutter and Steamboat Sloughs on the Sacramento River, staff provided input to the resource and regulating agencies regarding the key factors that should be considered in the investigation of alternatives for non-physical barriers to keep fish out of the central Delta where they appear to suffer higher mortality.

Colorado River

Work Continues on the Colorado River Protection Volume Plan

On October 5, Metropolitan, along with its agricultural partners and the state of California, sent a letter to the leadership in the Department of Interior affirming their commitment to developing a proposal to conserve up to 400,000 acre-feet of Colorado River annually from 2023 through 2026. The letter highlighted that this conservation is voluntary and will seek compensation from the Bureau of Reclamation to help implement these actions. This conservation would be in addition to California's commitment to add up to 350,000 acre-feet annual contributions under the 2019 Drought Contingency Plan. Before the new conservation can be implemented, impacts to the Salton Sea from the additional conservation need to be addressed, and regulatory compliance obtained, as well as compliance for additional agricultural conservation. Each of the California irrigation districts (Palo Verde Irrigation District, Coachella Valley Water District, Bard Water District, Imperial Irrigation District) plans to submit conservation proposals to Reclamation for funding under the Inflation Reduction Act. These proposals are due to Reclamation in mid-November and will likely include additional fallowing and on-farm efficiency programs. Metropolitan also plans to submit a proposal for turf removal and replacement, but those longer-term proposals are not to be submitted until sometime in 2023. For our agricultural partners to conserve additional water for Lake Mead, some of our existing conservation agreements may have to be amended. Metropolitan will ultimately need to approve those conservation proposals to ensure the water ends up in Lake Mead without harming Colorado River Aqueduct supplies. It is anticipated that Metropolitan's Board will need to consider and approve the conservation plans as a package sometime in early 2023. As the process is quickly evolving, staff will provide additional updates at the November Imported Water Committee meeting.

Engineering

Core Business Function – Execute Capital Investment Plan projects

Engineering Services manages and executes projects within the Capital Investment Plan (CIP) to maintain infrastructure resiliency, ensure regulatory compliance, enhance sustainability, and provide flexibility in system operations to address uncertain water supply conditions.

Distribution System Reliability Program

This program maintains reliable water deliveries through specific repair and rehabilitation projects on Metropolitan's pipelines, reservoirs, and control structures. Recent activities include the following:

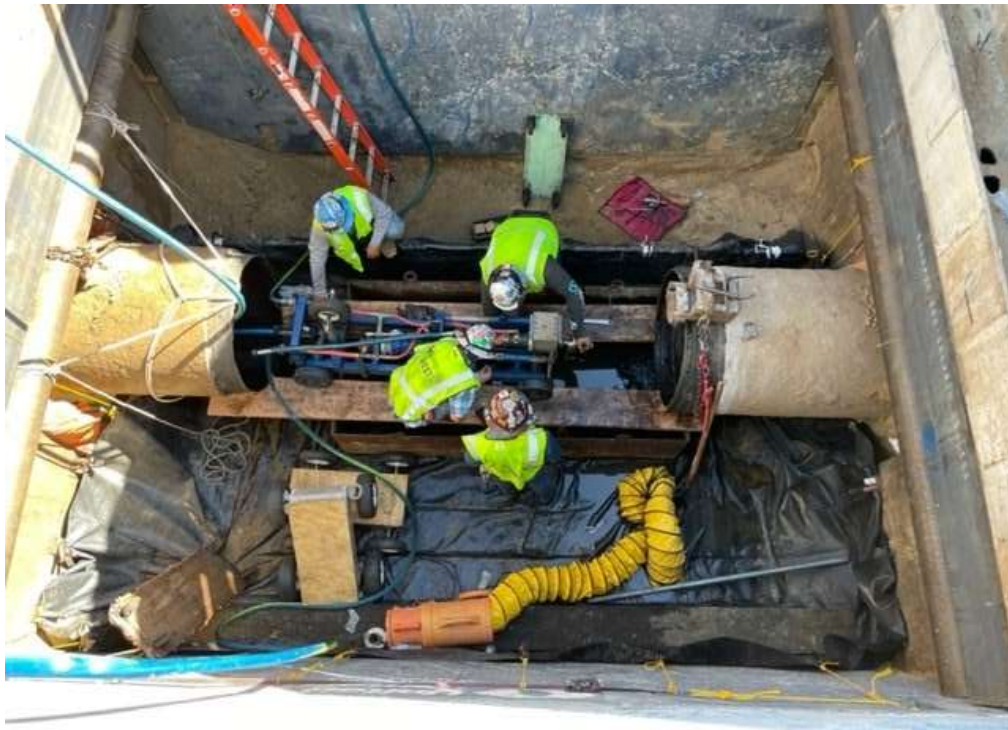
- **Casa Loma Siphon Seismic Upgrades**—This project mitigates leaks associated with long-term ground subsidence and will improve seismic resilience of the siphon as it crosses the Casa Loma Fault. This project replaces approximately 1,200 feet of the Casa Loma Siphon Barrel No. 1 at a fault crossing using earthquake-resistant ductile iron pipe (ERDIP) and welded steel pipe. The contractor has installed both ERDIP barrels, as well as the geofoam backfill in the primary fault zone. Construction is approximately 55 percent complete, with final tie-in scheduled in February 2023.
- **Orange County Feeder Lining Repairs**—This project replaces the deteriorated internal lining along an 11-mile portion of the Orange County Feeder within the cities of Santa Ana, Costa Mesa, and Newport Beach. Rehabilitation is proceeding in three stages. Construction of Stages 1 and 2 are complete. The shutdown for Stage 3 began on September 19, 2022, and the contractor has started construction on multiple sites. Current work includes excavation for access pits and removal of the existing coal tar lining. Construction is approximately 5 percent complete and is anticipated to be complete by September 2023.
- **Upper Feeder Joint Replacement**—This project replaced the damaged bellows expansion joint with a new slip-type expansion joint on the Upper Feeder pipeline where it crosses the Santa Ana River via an aboveground steel bridge. Construction was completed in September 2022. A vote on ratification of the emergency construction contract is planned for the November 2022 board meeting.
- **Lake Mathews Wastewater Replacement**—The project replaces the existing original septic tank system with a wastewater collection system at Lake Mathews. The new wastewater system connects to a nearby off-site Western Municipal Water District main wastewater line. The contractor is continuing to install the sewer line. Construction is approximately 58 percent complete and is scheduled to be complete in March 2023.



Casa Loma Siphon Seismic Upgrades—ERDIP and steel pipe transition at thrust block and wye

Water Resources and Engineering

(continued)



Orange County Feeder Lining Repairs—Cleaning machine



Lake Mathews Wastewater Replacement—Excavating sewer Line around the Lake Mathews Conference Room building

Prestressed Concrete Cylinder Pipe (PCCP) Reliability Program

This program was established to enhance the reliability of Metropolitan's water distribution system and to reduce the risk of costly emergency repairs of PCCP. The priority pipelines included in the program are the Second Lower Feeder, Sepulveda Feeder, Calabasas Feeder, Rialto Pipeline, and the Allen-McColloch Pipeline. A total of 100 miles of PCCP pipelines will eventually be relined with new steel pipe liners under this 20-year program. Recent activities include the following:

- **Second Lower Feeder PCCP Rehabilitation**—This project enhances distribution system reliability by rehabilitating PCCP segments of the Second Lower Feeder—28 miles in total. Rehabilitation of this pipeline is being staged over a period of 20 years, with multiple construction contracts. Approximately 13 miles have been rehabilitated to date and the remaining 15 miles are planned to be rehabilitated within the next 12 to 15 years. The westernmost portion of the feeder, spanning 1.1 miles through the City of Rolling Hills Estates, is in construction. The contractor is currently fabricating coiled steel liners. Construction is approximately 27 percent complete and is scheduled to be complete in August 2023. Final design of the adjacent Reach 3B, a 3.7-mile-long portion of Second Lower Feeder that traverses the cities of Lomita, Los Angeles, and Torrance is complete and is scheduled for board award in January 2023.
- **Second Lower Feeder Isolation Valve Procurement**—This fabrication contract provides 13 conical plug valves for the Second Lower Feeder PCCP rehabilitation. Three 48-inch and ten 54-inch diameter valves provide primary isolation for maintenance activities, inspections, and repairs required to maintain reliable water deliveries. Fabrication of these valves is approximately 75 percent complete. All three 48-inch conical plug valves have been delivered. Delivery of the first two 54-inch valves left the Yokohama, Japan port in October 2022, and are scheduled to arrive in November 2022. Three additional 54-inch valves are complete and are undergoing hydrostatic testing and are scheduled to be delivered in late 2022 or early 2023. The next two 54-inch valves will be delivered in the summer of 2023. Fabrication of three remaining 54-inch valves started in June 2022 and will be completed in early 2024.
- **Sepulveda Feeder PCCP Rehabilitation**—This project rehabilitates 35 miles of PCCP segments within the Sepulveda Feeder and will enhance delivery reliability to member agencies. Long-term rehabilitation of the Sepulveda Feeder will be staged over multiple years with multiple construction and procurement contracts. Final design of Reach 1 and Reach 2 are occurring simultaneously. Final design of Reach 1 is 70 percent complete and Reach 2 is 95 percent complete. Both are scheduled to be complete by February 2023. The Board authorized preliminary design for the northern 20-mile reach of Sepulveda Feeder in the August 2022 meeting. The North Reach project was re-prioritized to support the West Area Water Supply Reliability Improvements.
- **PCCP Rehabilitation Valve Storage Building**—This project constructs an 18,160 square-foot pre-engineered metal building on a reinforced concrete slab at Lake Mathews for valve and equipment storage. The contractor has completed shop-fabrication of the metal building components and continues construction of the concrete pad for the building at the Lake Mathews site. Construction is 41 percent complete and is scheduled to be completed in September 2023.

Colorado River Aqueduct (CRA) Reliability Program

This program maintains the reliability of Metropolitan's CRA conveyance system. Recent activities include the following:

- **Eagle Mountain Pumping Plant Utilities**—This project replaces the existing domestic water, wastewater, fire water, and irrigation distribution systems at the Eagle Mountain Pumping Plant. Final design is 65 percent complete and is scheduled to be complete by February 2023.
CRA Domestic Water Treatment System Replacement—This project replaces the membrane filtration system and associated water treatment equipment at the five Colorado River Aqueduct pumping plants. Procurement of water treatment equipment is underway with expected deliveries in two shipments, in mid-2022 and early 2024. The contractor is working on installing electrical conduit within the machine shop area at Intake Pumping Plant. Construction is 10 percent complete is scheduled to be complete by March 2025.
- **Copper Basin Discharge Valve Replacement**—This project will install a new 54-inch fixed cone valve and actuator at the base of the dam, refurbish the existing valve house and a slide gate and upgrade all associated electrical systems and access ladders at the Copper Basin Reservoir. This project will also include the replacement of the access ladders at the Gene Wash Dam. Final design is 75 percent complete and is scheduled to be complete in September 2023.
- **Cabazon Radial Gate**—This project replaces two radial gates and makes security, access, and safety improvements to the Cabazon Radial Gate Structure. Preliminary design is 20 percent complete and scheduled to be complete by November 2022.

System Flexibility/Supply Reliability

Projects under this program will enhance the flexibility and/or increase the capacity of Metropolitan's water supply and delivery infrastructure to meet current and projected service demands. Projects under this program address climate change affecting water supply, regional drought, and alternative water sources for areas dependent on State Project Water.

- **Wadsworth Pumping Plant Bypass Pipeline**—This project will construct a pipeline connecting the Wadsworth Pumphouse Conduit to the Inland Feeder at the Wadsworth Pumping Plant to allow continuous pumping of water from DVL's forebay while simultaneously filling the forebay from the lake. Final design is complete, and award of a construction contract is scheduled for December 2022.
- **Badlands Surge Protection Facilities**—This project will protect the Inland Feeder from excessive negative pressures that could develop from an unexpected shutting down of the pumps at Wadsworth Pumping Plant. Final design is 85 percent complete and is scheduled to be complete in December 2022.
- **Inland Feeder-Rialto Intertie**—This project will connect the Inland Feeder to the Rialto Pipeline to allow pumped water from DVL to be delivered directly to the Rialto Pipeline. Final Design is 85 percent complete and is scheduled to be complete by the end of November 2022.
- **Foothill Pump Station Intertie**—This project will connect San Bernardino Valley Municipal Water District's (SBVMWD) existing Foothill Pump Station with Metropolitan's Inland Feeder to provide the needed hydraulic lift to deliver water from DVL to the Rialto Pipeline. Final design is 60 percent complete and is scheduled to be complete by early 2023. Concurrently, the project team is assessing potential schedule impacts of discovering Stephens Kangaroo Rat (a threatened species under the Endangered Species Act) habitat in the project's footprint, which is expected to trigger more extensive environmental documentation, permitting, and mitigation processes.

Treatment Plant Reliability Program

This program was initiated to maintain reliability and improve the operating efficiency of Metropolitan's water treatment plants through specific improvement projects. Recent activities include the following:

Weymouth Plant

Weymouth Basins 5-8 and Filter Building No. 2 Rehabilitation—This project rehabilitates major mechanical and structural components including the flocculation/sedimentation equipment, sludge pumps, baffle boards and walls, launders, inlet gates, and outlet drop gates. Other improvements included in this contract are seismic upgrades of basin walls and inlet channel, abatement of hazardous materials in the basins, and replacement of filter valves and actuators in Filter Building No. 2. The contractor is currently procuring critical equipment and materials required for the upcoming half-plant shutdown in December 2022. Metropolitan is procuring remote terminal units and coordinating efforts to support the half-plant shutdown. Construction is 8 percent complete and is scheduled to be complete by May 2025.

Mills Plant

Mills Electrical Upgrades, Stage 2—This project upgrades the electrical system with dual-power feeds to key process equipment to comply with current codes and industry practices; improves plant reliability; and enhances worker safety. Stage 1 construction is complete. Stage 2 improvements will add a second incoming 12 kV service from Riverside Public Utilities (RPU), reconfigure the existing 4160-volt switchgear, and replace the standby generator switchgear and the emergency generator programmable logic controller. The contractor completed the electrical grounding system at RPU's switchyard and is preparing to expand the ORP switchgear building. Construction is 19 percent complete and is scheduled to be complete by December 2024.

System Reliability Program

The System Reliability Program consists of projects to improve or modify facilities located throughout Metropolitan's service area in order to use new processes and/or technologies and improve facility safety and overall reliability. Recent activities include the following:

- **Headquarters Physical Security Upgrades**—This project implements comprehensive security upgrades for Metropolitan's Union Station Headquarters. These upgrades are consistent with federally recommended best practices for government buildings. This work has been prioritized and staged to minimize rework and impacts on day-to-day operations within the building. Stage 1 work is complete and provides enhanced security related to perimeter windows and doors. Stage 2 improvements provide security system upgrades inside the building with a focus on the main entry rotunda area, boardroom, executive dining lounge, and security control room. The contractor completed commissioning of security equipment on Floors 2-12 and equipment installation in the rotunda. Construction of Stage 2 improvements is complete except for the additional exterior door latch-bolt monitoring on the first floor. Stage 3 improvements will provide security system upgrades around the perimeter of the building. Design for Stage 3 improvements is complete and board award of a construction contract is scheduled for December 2022.
- **Headquarters Building Fire Alarm and Smoke Control System Upgrades**—This project upgrades the Metropolitan Headquarters Building fire life safety systems, which includes replacement of the fire detection and alarm system and HVAC system improvements for smoke control. The fire alarm and smoke control systems in the Metropolitan Headquarters Building provide detection, notification, and control of building functions so that occupants and visitors can safely exit in the event of a fire. The contractor completed the

Water Resources and Engineering

(continued)

fire alarm system upgrades and is currently working on the smoke control upgrades. Construction is 62 percent complete and is scheduled to be complete by September 2023.

- **SCADA System Upgrades**—This project will upgrade Metropolitan’s entire control system in incremental stages, spanning the Colorado River Aqueduct, the five water treatment plants, and the conveyance and distribution system. The first stage of this project is to replace the control system at the Mills plant, starting with a pilot effort on one of the plant’s remote terminal units. This will demonstrate the proposed technology and the consultant’s approach for the plant and the overall project. The pilot project is anticipated to be complete by June 2023. Staff is finalizing the consultant agreement for project execution and performing field investigations for the communication system. The full system upgrade at the Mills plant is anticipated to be complete by January 2026.

Operations

Water System Operations

Core Business Objectives

Develop New Solutions to Enhance Operational and Business Processes

Jensen staff member Kenneth Lorenzo designed an innovative way to improve the water quality analyzer maintenance and sample line chlorination procedure in the influent building at the Jensen plant. This building houses analyzers that monitor the plant influent water quality. Staff fabricated custom analyzer probe holders that will improve sample line chlorination process efficiency and allow for quick probe isolation. The new probe holders use a quick release system and are easier to maintain and isolate, resulting in improved productivity and overall cost savings.



Previous (left) and modified (right) water quality probe manifold at the Jensen plant



Kenneth Lorenzo (Jensen O&M Tech IV) installing the modified analyzer probe manifold at the Jensen plant

Prepare Employees for New Opportunities

The Water System Operations Apprentice and Technical Training Programs develop and train personnel to become qualified mechanics and electricians responsible for maintaining Metropolitan's water treatment and distribution systems. This month, electrical apprentices completed Water Treatment fundamentals through a local community college as part of their academic instruction. The class taught basic operating principles and techniques of the conventional surface water treatment process and common disinfection processes. The class prepares apprentices for the water treatment operator certification examination.

Staff visited the Department of Water Resources' Apprenticeship Program training facility in Bakersfield and met with the Training Center Supervisor. DWR and Metropolitan staff shared program information, with opportunities identified for continued improvements to Metropolitan's Apprenticeship Program. Staff also evaluated and discussed DWR's training equipment, applications, and shop layout. This information will help staff plan for upcoming facility improvements at the new Apprenticeship Training Center.



Apprenticeship staff viewing training equipment at DWR's training facility

Manage Vacancies

WSO filled two vacancies in September 2022.

Provide Reliable Water Deliveries

Metropolitan member agency water deliveries were 156,802 acre-feet (AF) for October with an average of 5,058 AF per day, which was 391 AF per day higher than in September. Treated water deliveries decreased by 2,382 AF from September for a total of 65,487 AF, or 42 percent of total deliveries for the month. The Colorado River Aqueduct (CRA) continued operating at an eight-pump flow with a total of about 106,000 AF pumped for the month. State Water Project (SWP) imports averaged 1,706 AF per day, totaling about 52,878 AF for the month which accounted for approximately 34 percent of Metropolitan's deliveries. The target SWP blend remained at zero percent for the Weymouth, Diemer, and Skinner plants.

Manage Water Reserves

Water reserves continued to be managed according to Water Surplus and Drought Management (WSDM) principles, operational objectives, and the current 5 percent State Water Project (SWP) allocation. Deliveries of SWP supplies were minimized to preserve SWP Carryover and Flexible Storage. Releases from DVL through PC-1 to connections on the Lakeview Pipeline, as well as the DVL to Mills plant operation, continued in October to conserve SWP supply use in that area. Returns from the Semitropic and Kern Delta SWP Banking Programs also continued in October. Staff continued Greg Avenue pump operations to minimize SWP usage. In addition, staff continued coordination with member agencies, shifting their deliveries from SWP connections to Colorado River water connections, when possible. Staff continue to develop additional drought mitigation actions to help with the low SWP allocation in 2022 and prepare for 2023.

Support the Pure Water Southern California Program

During October, staff completed pretesting and began baseline testing for secondary membrane bioreactor (MBR) operations at the Pure Water Southern California (PWSC) demonstration plant in Carson. Staff installed new instrumentation on the aerobic bioreactor to help stabilize operations and replaced a cracked pipe on one of the MBR systems.



Staff repairing an air leak on tubing to an MBR valve actuator at the PWSC demonstration plant

On October 7, Metropolitan and Los Angeles County Sanitation Districts staff participated in a full-day workshop with visiting officials from Singapore Public Utilities Board (PUB). The workshop providing an opportunity to exchange information on innovative approaches to water reuse and water quality issues. Singapore PUB is highly recognized for their leadership and innovation in water reuse with their NEWater program. The workshop provided significant value with future technical exchanges planned between the agencies. Staff also provided a tour of the PWSC demonstration plant and an overview of Metropolitan's testing plans.



Staff providing a tour to Singapore PUB officials at the PWSC demonstration plant



Metropolitan, LACSD, Singapore PUB, and Booky Oren Global Water Technologies at the PWSC demonstration plant

Manage Power Resources and Energy Use in a Sustainable Manner

Given continuing drought conditions, the CRA is expected to maintain eight-pump flow up to the next planned CRA shutdown in February 2023. Staff continue to monitor the cost and operational impacts of reduced U.S. Bureau of Reclamation (USBR) hydropower generation and increased energy prices in the electricity and natural gas markets. Staff are also monitoring the Resource Adequacy (RA) capacity needs of the CRA and will obtain supplemental RA as required.

Because of low SWP allocations and system operating conditions, Metropolitan's hydroelectric plants generated an average of about 2.8 megawatts, or over 2,040 megawatt-hours and \$201,325 in revenue, for the month of September 2022. Metropolitan's solar facilities totaling 5.4 megawatts of capacity generated approximately 1,000 megawatt-hours in September 2022.

Ensure Water Quality Compliance, Worker Safety, and Environmental Protection

Metropolitan complied with all water quality regulations and primary drinking water standards during September 2022.

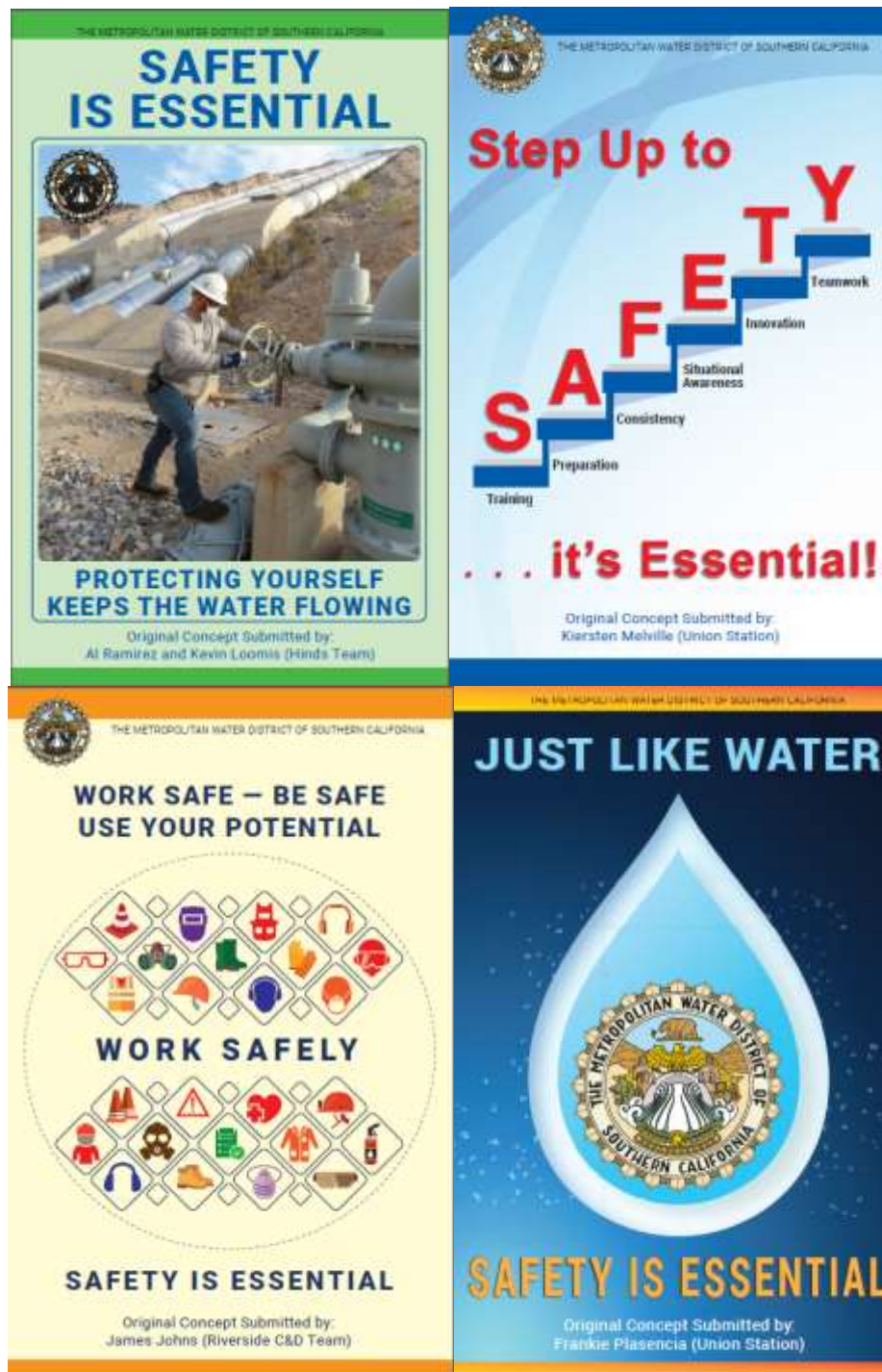
On October 18, Metropolitan hosted its regular quarterly meeting with the State Water Resources Control Board's Division of Drinking Water. Discussion topics included updates on regulations, capital projects, CRA water supply, the Jensen plant's excellent performance during the Castaic Lake elevated turbidity event, the 2022–23 shutdown season, and Lake Skinner shoreline herbicide application.

Metropolitan's Water Quality Laboratory in La Verne and the five satellite laboratories at the water treatment plants were audited by a state-approved assessor for recertification under the newly adopted state laboratory accreditation regulations. The audit spanned 11 days, beginning on October 24. The audit report and corresponding corrective action plan (if needed) will be included as part of Metropolitan's certification application. Certification is required for Metropolitan's water quality laboratories to continue monitoring and reporting results on public drinking water.



Staff discussing standards and quality assurance records with the independent assessor during the Water Quality Laboratory's audit to renew state certification

In 2021, staff participated in a T-shirt design contest for Metropolitan's safety program. The runner-up design concepts have now been made into posters that are being displayed at Metropolitan facilities to continue to promote employee safety.



New safety posters created from employee T-shirt design concepts

New safety posters tailored for the Union Station and Sacramento office locations have been developed to help alert employees of office safety hazards and identify safe practices.



Office safety poster for Union Station

Optimize Maintenance

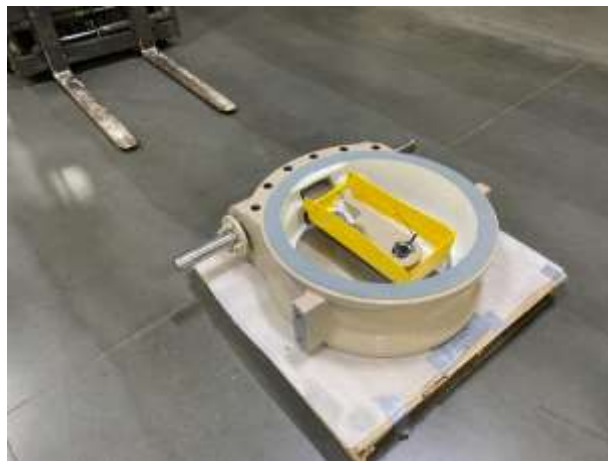
This month, the La Verne Shops refurbished a check valve for the Perris Pumpback facility. Staff found the original bushings damaged because they were made from lower-grade bronze material. Staff manufactured the replacement bushings with upgraded material. Bushings are plain bearings or bronze sleeves used to allow the disc of the valve to rotate, regulating flow as required.



Removal of compromised stainless-steel bushing from valve body (left) and machining of new shaft (right) for Perris Pumpback facility



New bronze bushings manufactured to replace the worn stainless-steel bushings for Perris Pumpback facility



Pressure testing of the refurbished valve (left) and completed valve (right) ready for transport to the Perris Pumpback facility

Oil sampling and analysis is a critical component of Metropolitan's preventative maintenance program. Staff sample the CRA 230kV transformer oil and analyze for dissolved gases on a regular basis. The dissolved gas analysis can provide indicators of potential abnormal conditions within the transformer.



Staff taking an oil sample from a transformer at Gene pumping plant

Access road repair is a reoccurring issue during the monsoonal season in the Desert. Seasonal storms can quickly make access impossible even with a four-wheel drive maintenance vehicle. This month, staff made a rapid repair to the Chuckwalla communication site access road to facilitate vehicle travel for maintenance of the communication equipment.



Staff repairing storm damage at the Chuckwalla communication site

Staff rebuilt a circulating water pump at the Eagle Mountain pumping plant. Once disassembled, the components were delivered to the coatings team for blasting and coating before the pump was reassembled and returned to service.



Before (left) and after (right) blasting and coating of circulating water pump components for Eagle Mountain pumping plant

Staff relocated an incoming overhead power line in front of the fleet maintenance shop at Diamond Valley Lake (DVL) to an underground route. The relocation of the incoming power line was necessary to provide overhead clearance for the installation of a new vehicle lift that is in progress. Staff worked closely with Southern California Edison to build the underground conduit to specifications. Once complete, a slab will be poured to complete the vehicle lift, which will optimize vehicle maintenance throughout the DVL area.



Staff trenching dirt to relocate an incoming overhead power line to an underground route at the DVL fleet shop

In late September, staff began a shutdown of the Etiwanda Pipeline. The pipeline was taken out of service and fully dewatered to begin a rehabilitation project where a contractor will reline approximately 1,300 feet of the steel pipe with a new steel liner. Additionally, 13,800 feet of mortar lining will be removed and a polyurethane coating will be applied. Some portions of the pipeline, rehabilitated during earlier phases of the project, will be epoxy-coated as needed. The pipeline is anticipated to return to service by June 2023.



Staff removing a flange and entering the Etiwanda Pipeline



Off-loading (left) and palletizing valves (right) to be stored during phase 3 of the Etiwanda Pipeline relining

Staff installed an alternate power supply from the substation serving the domestic water pumps at the finished water reservoir and the new water quality instrumentation building at the Weymouth plant. The work involved installing over 3,000 ft of copper conductors, breaker and cable terminations, and associated safety devices. This power supply improves the plant's resiliency and will allow for maintenance and emergency operations of both substations without the need for portable engine generators. This reduces engine emissions, fuel costs, labor, and downtime when placing generators and connecting temporary wiring.



Staff using an electric cable puller at a deep vault at the Weymouth plant



Electricians prepping cable for installation at the Weymouth plant

Optimize Water Treatment and Distribution

The State Water Project target blend entering the Weymouth and Diemer plants and Lake Skinner was zero percent in October 2022.

Flow-weighted running annual averages for total dissolved solids from August 2021 through July 2022 for Metropolitan's treatment plants capable of receiving a blend of supplies from the State Water Project and the Colorado River Aqueduct were 597, 593, and 590 mg/L for the Weymouth, Diemer, and Skinner plants, respectively.

This month, staff continued modifications to the CenB-36 service connection along the Middle Feeder in the city of Rosemead. The work included refurbishing the discharge piping and chemical feed system to support Metropolitan's drought efforts through maximizing deliveries of Colorado River water to an area that would otherwise receive only SWP supplies.



Staff grading the site (left) and the completed tank tie-down bracket at the CenB-36 service connection

While performing a monthly test on the station generator at the Chemical Unloading Facility (CUF) in Perris, an internal component failure led to damage of the generator windings and electronic controls. The repair required a complete tear down and rebuild of the generator. A temporary generator was required to ensure that CUF remained in operation and able to run at full capacity during the repair. Station generator testing occurs monthly at the plants to ensure operational reliability in the event utility power is lost.



Staff installing the rebuilt generator at the Chemical Unloading Facility

Staff completed annual cleaning of a sedimentation basin at the Weymouth plant. As part of this work, the basin was dewatered using a submersible pump in preparation for the remaining sludge to be removed. During the inspection, several flocculator paddle boards were also replaced. Annual cleaning of the sedimentation basins is performed to inspect equipment and maintain operational reliability.



Staff dewatering a sedimentation basin at the Weymouth plant



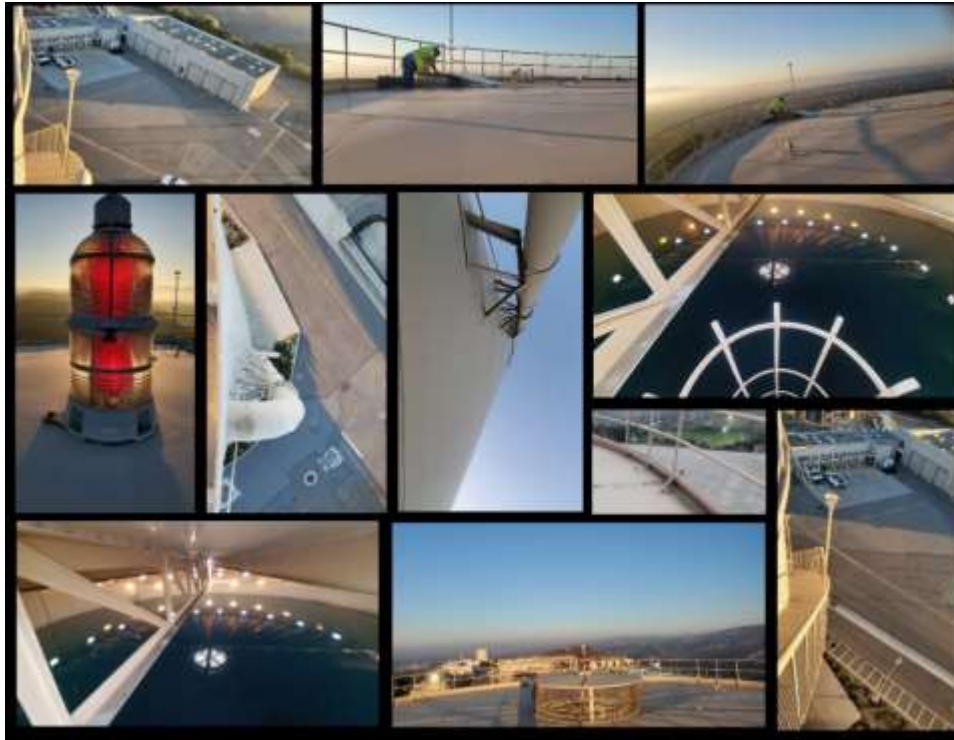
New sedimentation basin flocculator paddle boards at the Weymouth plant

Staff repaired a filter drain valve gearbox on a module at the Skinner plant. During the filtration process, each filter is operated until it reaches capacity and requires cleaning. The process of cleaning (backwashing) the filter involves operating valves to reverse flow through the filter media. The filter drain valve is an integral component in the filter operation, with the gearbox and motor actuator moving the valve position. As the gearbox internal gearing was found to be defective, staff replaced the main gear to maintain operational reliability of the filtration process.



Staff installing the repaired filter drain gearbox at the Skinner plant

Staff inspected the east washwater tank as part of the monthly Plant Safety Walk at the Diemer plant. Safety Walks are performed to identify potential safety improvements throughout the plant. The east washwater tank is used to store treated water for backwashing filters at the treatment plant and for other industrial uses. The tank is 80 feet tall and stores over one million gallons of water.



East washwater tank inspection at the Diemer plant

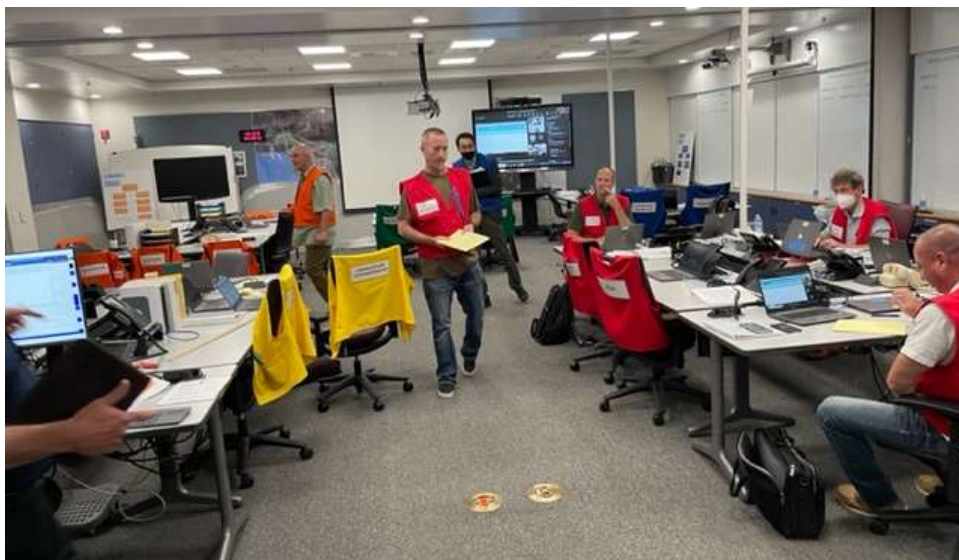
Staff installed a SCADA monitor in the new evaporator room that was added during the Chlorine Expansion capital project at the Weymouth plant. The core video distribution equipment did not have enough outputs for the new monitor. The monitor will provide staff the ability to effectively monitor the chlorine system to ensure safe and reliable operations.



Staff testing signal cable integrity (left) and checking monitor bracket mobility (right) in the chlorine evaporator room at the Weymouth plant

Improve Emergency Preparedness and Response

Staff assessed Metropolitan’s Emergency Response Plan by conducting a district-wide earthquake response exercise on October 20. As part of the “Great California ShakeOut”, Metropolitan’s Emergency Operations Center (EOC), Weymouth plant, and Western Conveyance and Distribution staff participated in the exercise. Member agency representatives also participated from the cities of Pasadena and San Marino, as well as from Foothill, Upper San Gabriel Valley, and Three Valleys Municipal Water Districts. The exercise focused on assessing a hybrid (in-person/remote) EOC activation. Staff also tested Metropolitan’s emergency mass notification system by sending a reminder message to all employees to “Duck, Cover and Hold On” during the 10:20 AM ShakeOut Exercise. Exercises such as this help to further enhance Metropolitan’s readiness for future emergencies.



Staff working in the EOC during the Great California ShakeOut earthquake exercise



Staff conducting a “Duck, Cover and Hold On” drill during the Great California ShakeOut earthquake exercise

On October 17, the Water Quality Incident Command Post (ICP) conducted a functional exercise in response to a simulated source water contamination event. The exercise provided staff with hands-on experience in using the U.S. Environmental Protection Agency Water Contaminant Information Tool, an opportunity to test the standardized emergency communication pathways, and experience conducting emergency response actions in a hybrid work environment.



Water Quality ICP conducting a hybrid functional emergency exercise

Actively Engage in Capital Project Planning and Execution

Staff supported the Rialto and Inland Feeder Intertie drought response capital project by completing nine potholes at the Department of Water Resources' (DWR) Devil Canyon Facility. Potholing helps to locate underground utilities and existing infrastructure, including DWR infrastructure, and is an essential part of the engineering design process. The potholes ranged in depth from 6.5 to 24 feet deep and required steel shoring plates due to the depth.



Potholing operations (left) and staff installing steel end plates (right) at DWR's Devil Canyon Facility

CRA facilities continue to reliably operate at maximum capacity during the current drought conditions, because of the efforts of staff to monitor and maintain equipment. Capital improvement projects can present additional challenges that must be overcome to ensure continued water deliveries. The Overhead Crane Replacement capital project removed the crane from service during construction, while also limiting access for maintenance and operations. Staff coordinated maintenance activities with the resident inspector to minimize the impact to operations and the crane project schedule.



Overhead crane replacement at Gene pumping plant

On October 14, a member of the design consulting team walked through the entire Water Quality Laboratory building in La Verne using a bi-directional camera, generating a 3D image of the laboratory interior. This 3D “map” creates the baseline building condition for the Water Quality Laboratory Improvements capital project.



Using a helmet mounted bi-directional camera to record a continuous interior image of the Water Quality Laboratory

Manage the Power System

Several factors are affecting CRA power costs this year. Extended eight-pump flow operations under current drought conditions are increasing energy consumption. Supplemental energy purchases from the California Independent System Operator (CAISO) market are needed to meet this additional pumping demand. In addition, Metropolitan's allocation of generation at Hoover and Parker Dams is down significantly because of low reservoir water levels. Hoover output is down about 40 percent, further increasing the need for supplemental energy purchases which are about three to five times more expensive than Hoover and Parker energy. This price disparity is exacerbated by the volatility in the natural gas market, which provides the main source of fuel for non-renewable electric generation, and supply concerns following the September extreme heat event. Staff, in conjunction with Metropolitan's scheduling coordinator, continue to monitor the western energy markets to identify opportunities for potential cost savings while ensuring reliable CRA operations.

Prepare for Future Legislation and Regulation

On September 16, the Governor signed AB 2108: Water policy, environmental justice, disadvantaged and tribal communities. The bill adds an environmental justice advocate to both the State and Regional Water Boards. Staff expressed concerns that the bill could grant these boards new authority when reviewing previous regulatory decisions, such as delegating water rights. Staff will continue to monitor the regulatory outcomes of AB 2108.

On September 16, the Governor signed SB 1020: Clean Energy, Jobs, and Affordability Act of 2022. Among other provisions, SB 1020 accelerates the requirement for the State Water Project to be reliant on 100 percent clean energy from 2045 to 2035. This will have a direct financial impact on Metropolitan's SWP supplies. Staff will continue to seek funding mechanisms to offset the costs imposed by the bill.

On September 28, Governor Newsom signed the Metropolitan-sponsored bill SB 230: State Water Resources Control Board, Constituents of Emerging Concern in Drinking Water Program. SB 230 establishes a new program within the SWRCB to evaluate constituents of emerging concern in drinking water. Staff will track the development and outcomes of this program.

On October 14, the California Division of Occupational Safety and Health proposed updates to the COVID-19 Non-Emergency Regulation (COVID-19 Standard). For the purposes of isolating and quarantining persons infected with or exposed to COVID-19, the new rule redefines "close contact" separately for indoor spaces measuring either less than or greater than 400,000 cubic feet per floor. Other updates include clarification of ventilation requirements, improvements to reporting and recordkeeping requirements, and updated definitions. Staff are reviewing the latest draft standard. If formally adopted in December 2022, the new COVID-19 Standard will be effective from January 2023 through January 2025.

On October 17, staff submitted comments on the California Air Resources Board's (CARB) proposed Advanced Clean Fleets (ACF) Regulation. Starting January 1, 2024, the regulation mandates that 50% of Metropolitan's medium-to-heavy duty vehicle purchases (i.e., vehicles weighing more than 8,500 lbs.) must be zero-emission (e.g., electric or hydrogen) and 100 percent by 2027. Metropolitan requested that CARB extend the 100% purchase date for water utilities from 2027 to 2030—to allow both the zero-emission vehicle (ZEV) market and charging infrastructure to mature so as not to compromise essential water services or emergency response capabilities. Staff also commented on improving the vehicle purchasing exemption process when ZEVs are not available, or the charging infrastructure is not ready. Staff will provide verbal comments at the October 27 CARB public hearing. The ACF is set to be adopted in early 2023.

On October 19, the SWRCB's Division of Drinking Water (DDW) proposed revisions to the Detection Limits for Purposes of Reporting (DLRs) for antimony, arsenic, beryllium, cadmium, lead, mercury, nickel, and thallium; and new DLRs for iron, manganese, and zinc. DLRs are the minimum levels at which any analytical finding must be reported to DDW. The draft proposal revises the DLRs for these metals to concentrations closer to, or equal to, the corresponding public health goals. DDW will hold a public workshop on November 3 to discuss these revisions. Staff worked with DDW before the release of this proposal to ensure that Metropolitan can comply with the revised/new DLRs given current analytical capabilities.

Ensure Accurate Billing Infrastructure

Staff repaired the LA-04 service connection along the Palos Verdes Feeder in the city of Los Angeles. This service connection, serving the Los Angeles Department of Water and Power, was damaged in a fire in fall 2021. The fire damaged the Automatic Meter Reading (AMR) meter and engulfed the service connection electronics cabinets. The damaged equipment was removed and replaced with new cabinets and electronic equipment. Staff tested and calibrated the AMR meter and returned it to service.



Fire damaged AMR cabinet at the LA-04 service connection

Advance Education and Outreach Initiatives

On October 21, staff provided a Director tour of the Water Quality Laboratory that included guests from the city of Beverly Hills and the Municipal Water District of Orange County. The tour provided an overview of Water Quality's regulatory compliance monitoring program, flavor profile analysis, and invasive quagga mussels.



The first post-COVID Director tour of Metropolitan's Water Quality Laboratory

On October 13, staff provided a tour of the Jensen plant to a group of visiting officials from the city of Daegu in South Korea, accompanied by the AWWA International Council. As part of the tour, the delegation met with WSO's Assistant Group Manager to learn about Metropolitan's planning efforts, extensive delivery system, and operational flexibility in serving the drinking water needs for Southern California. While smaller in scale, the Daegu officials are developing projects to meet their future supply needs and expressed their appreciation for learning about Metropolitan's system including identifying areas of mutual interest. The delegation also visited LADWP's Los Angeles Aqueduct Filtration Plant while in California.



WSO Assistant Group Manager briefing South Korean delegation during tour of the Jensen plant



Metropolitan staff and South Korean delegation during tour of the Jensen plant

Staff provided a tour of the Diemer plant to the National Association of Women in Construction. Participants enjoyed learning about the history of Metropolitan, seeing the operating processes, and talking to the control room operator about the challenges of operating a large water treatment plant.



Diemer plant manager explaining CRA operations to plant tour participants

On October 20, staff participated in the WaterReuse Association Los Angeles and Orange County Chapters joint meeting at SoFi Stadium, which provided an opportunity to learn about the onsite sustainable water resource management system.

Monthly Update as of:

10/31/2022

<u>Reservoir</u>	<u>Current Storage</u>	<u>Percent of Capacity</u>
<i>Colorado River Basin</i>		
Lake Powell	5,832,000	24%
Lake Mead	7,417,000	29%
<i>DWR</i>		
Lake Oroville	1,102,824	31%
Shasta Lake	1,414,218	31%
San Luis Total	501,134	25%
San Luis CDWR	313,177	29%
Castaic Lake	110,990	34%
Silverwood Lake	64,975	87%
Lake Perris	93,537	71%
<i>MWD</i>		
DVL	501,939	62%
Lake Mathews	107,209	59%
Lake Skinner	37,155	84%



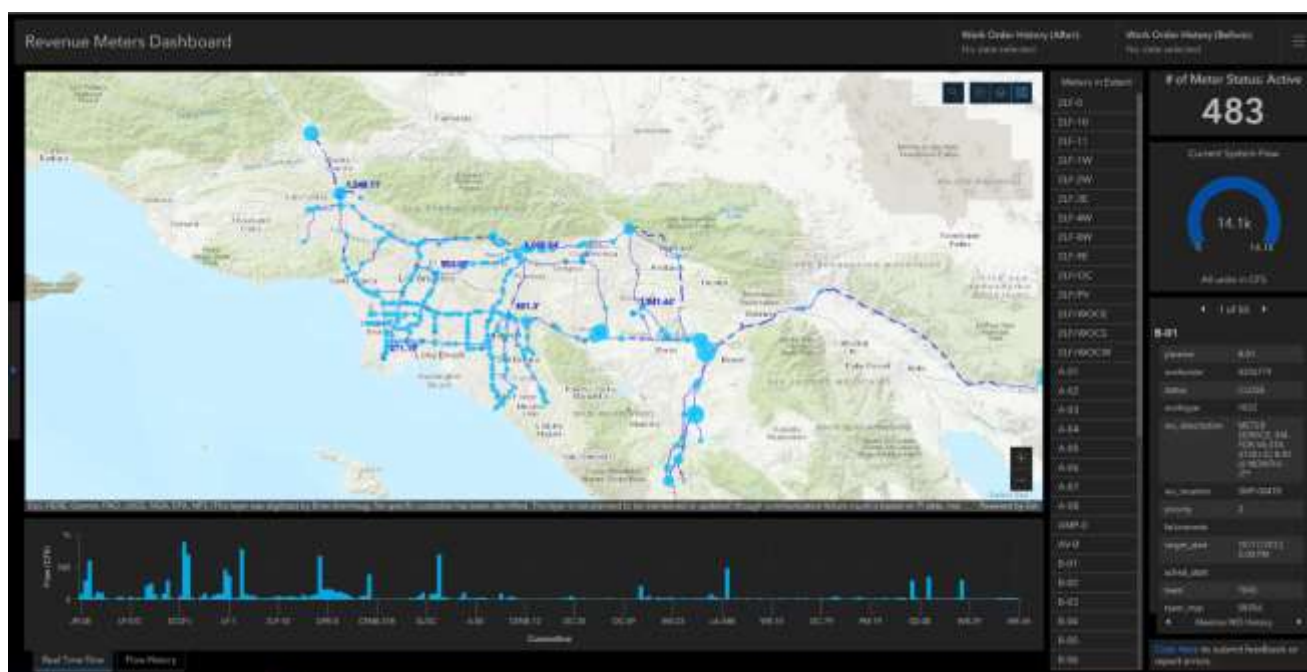
Hoover Dam

Information Technology

IT Core Business: Project Highlights

Asset Management

Asset Monitoring and Management Revenue Meter Dashboard—This dashboard is intended to provide Metropolitan staff access to the vast amount of asset data Metropolitan maintains related to service connection flow meters. Staff across Metropolitan interact with service connection flow meters as a part of their business processes. Metropolitan’s business processes related to revenue meters are supported by several data systems which contain authoritative asset data for service connection flow meters. For example, the Water Information System (WINS) is a data system used for billing member agencies for water supplied through service connections, and the Infrastructure Mapping Data Collection (IMDC) is a data system used to store geospatial location information of Metropolitan assets. This asset dashboard is currently in the pilot phase and will be released in the coming months.



Automated Data Transfer to the Department of Water Resources

Because of the recent drought, the California Department of Water Resources (DWR) requested Metropolitan to provide daily storage data for Diamond Valley Lake, Lake Mathews, and Lake Skinner. Water Resource Management (WRM) staff was providing this daily information via email to a DWR/CDEC (California Data Exchange Center) staff. This manual process was very time consuming. IT worked closely with WRM and DWR staff to develop a new solution that automates data transfer to DWR and does not require sending daily emails.

Real Property

Project Highlights

Provide right-of-way planning, valuation, and real property acquisition support services for the protection and reliability of existing infrastructure.

Two leases were acquired for the Etiwanda Pipeline North Liner Repair project in the city of Fontana for parking and access. One was from SC Fontana Development Company, LLC for 0.58 acres, and the other was from Intex Properties Inland Empire Corp for 2.15 acres. The 12-foot diameter Etiwanda Pipeline will be relined with a new polyurethane coating that has better durability and wear than the existing cement mortar coating.

Foster staff training and development.

The following training courses were completed: OneNote Overview and MS Word Advanced Features.

Real Property Acquisition, Management, and Revenue Enhancement

In conjunction with our partners in WSO and Security, manage and protect Metropolitan's real property land holdings and permanent easements while ensuring that Metropolitan's core operations are protected.

Eight quitclaim deeds were obtained from the U.S. Department of the Interior, Bureau of Land Management (BLM), covering approximately 5,700 acres of 1932 Act Lands in Riverside and San Bernardino Counties.

The 1932 Act authorized the federal government to grant Metropolitan lands to build and operate Colorado River Aqueduct but included a reversionary interest clause. The clause reverts properties to the federal government if they are not used for the original intended purpose. The 2019 John D. Dingell Jr. Conservation, Management, and Recreation Act and the Contributed Funds Agreement authorized by the Board on October 2020, allows BLM to release the federal government's reversionary interest in these lands by quitclaim deeds. Recorded deeds bolster Metropolitan's records of clear legal title to lands granted to it by Congressional action and help prevent unlawful use of these lands by third parties.



Provide valuation, land management, and real property disposition support services for the maximum return or use of Metropolitan-owned land and facilities.

The existing leases with tenants at Webb Tract, Holland Tract, Bacon Island, and a portion of Bouldin Island have been amended to extend an additional one-year term. The lease extensions will allow the continuance of existing pasture and grazing activities as well as corn, wheat, oat, milo, and alfalfa farming on the Bay Delta Islands.

The City of Perris has been granted two permanent easements for public road purposes comprising approximately 1.0 acre and 1.7 acres of fee-owned land. The easements are conditions of approval on commercial development projects requiring the installation of improvements and expansion of the Webster Avenue, Sinclair Street, Redlands Avenue, and Johnson Avenue public road rights-of-way.

Delano Colorado River Transmission, LLC (DCRT) has been granted a permanent easement for electric transmission line purposes comprising approximately 23 acres of fee-owned land in the Palo Verde area. DCRT is preparing to construct a 500-kilovolt electric transmission line, known as Ten West Link, for the distribution of power from Western Arizona to the Southern California desert region. Terms and conditions are included in the easement to address Metropolitan's paramount rights as well as certain measures to accommodate Metropolitan's tenants.

An entry permit has been issued to City of Los Angeles Department of Water and Power (LADWP) for construction laydown and staging purposes comprising approximately 1.3 acres of land within the Foothill Feeder right-of-way near Sylmar adjacent to Interstate Freeway 5. The three-month permit is needed to help facilitate LADPW's Pacific Direct Current Intertie project involving the transmission of clean and renewable energy from Oregon to California.

Efficiently maintain and operate assets not related to the treatment and distribution of water.

The Diamond Valley Lake (DVL) Marina hosted the final night fishing tournament of the season. Many anglers came out to enjoy an evening of competitive fishing. The summer evening tournaments continue to attract anglers despite the decreasing lake elevation, which has now reached a level that reduces the use of the launch ramps to the extended center ramps.



Staff continues to perform maintenance repairs at the Clayton A. Record Jr. Viewpoint at DVL. During this period, the work included the replacement of the shade canopy fabric, which exceeded its useful life. The shade canopy provides much-needed shade for visitors on sunny days. It also provides a nice place to sit and enjoy the views of the DVL.

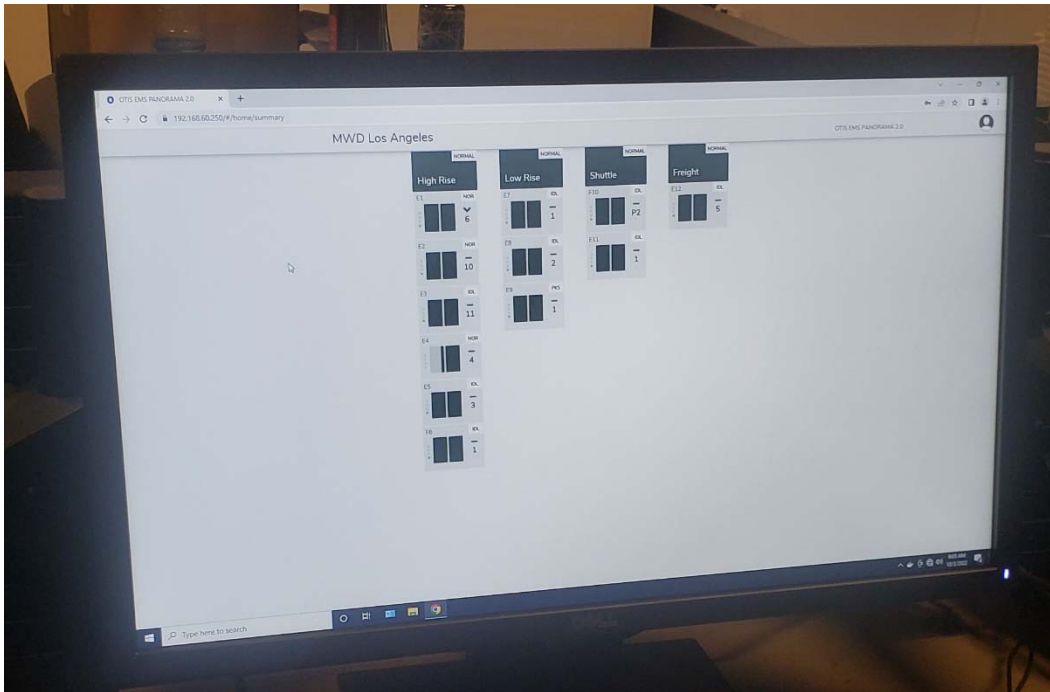


Before



After

Staff completed replacement of the Elevator Management System (EMS) at the headquarters building. The EMS system enables building staff to monitor, control, report on, and manage a full range of operation-critical functions via a web-browser.



District Housing Maintenance and Management.

Desert Property Maintenance completed 37 work orders for this reporting period. Sixteen of these work orders were Tenant Requested Work Requests that included items like replacing water heaters, restoring power to electrical outlets, installing new weather-stripping, replacing doors, repairing sprinklers, and added pest control.

The Real Property Eastern Region has completed preparation work on one house for this reporting period. This house is now ready for the pre-occupancy assessment with the new tenant. Preparation efforts for this house included fresh paint, new flooring, new appliances, countertops, and new window blinds throughout as well as a complete bathroom remodel.

Under the General Manager's authority, Real Property is developing a village cleanup plan and is in the process of implementing 20 housing and recreational projects that include items like providing backyard shade covers, shade covers for playground equipment, installation of more than 30 carports, demolition of houses, purchasing residential freezers for the tenants, installation of fencing, and providing new patio furniture at pool areas. To facilitate the completion of the 20 projects, Real Property is working closely with Water System Operations and Engineering to accomplish many of these tasks.

Security

Project Highlights

Security and Emergency Response

The University of Southern California (USC) Safe Communities Institute (SCI) hosted the Fall 2022 Quarterly Los Angeles Area Unmanned Aircraft System (UAS) Working Group in-person meeting. Attendees included representatives from:

- Metropolitan's Security Management Unit
- Department of Homeland Security's Cybersecurity and Infrastructure Security Agency (CISA)
- California's Department of Water Resources
- Port of Long Beach
- FAA
- LAPD
- Universal Studios
- LA County Fire
- Southern California Edison

All attendees successfully completed the Unmanned Aircraft System Program Development (UASPD) course, which was designed by FEMA to aid first responders and public agencies in the successful development, implementation, and sustainment of a department's small UAS (sUAS) program. The course provided information on:

- Understanding FAA UAS flight restrictions and rules under 14 CFR Part 107
- Developing standard operating procedures
- Providing knowledge and tools required for establishing sUAS program goals
- Requesting waivers and airspace authorizations
- Government agency best sUAS practices



CISA
CYBER+INFRASTRUCTURE

USC Price
Safe Communities Institute



USC SCI hosted meeting on sUAS

Security and Emergency Response

Metropolitan's Security Management Unit (SMU) has been working with Los Angeles Metro on security-related issues at the Union Station campus, where Metropolitan's headquarters building is located. As a response to comments made by employees at the Coffee with the GM last month, the SMU met with Metro security personnel to collaborate on training and exercises and to strengthen communication and collaboration between the organizations.

Los Angeles Metro has heavily invested in security measures to reduce incidents related to unsheltered and vagrancy at the greater Union Station campus and is in favor of allowing Metropolitan to maintain control of its courtyard, for the safety and security of its employees.

Employee Readiness for All Hazards and Emergencies

Metropolitan's Security Management was invited to tour the Southern California Edison (SCE) Irwindale headquarters facility and view live demonstrations of various security technologies actively protecting their bulk electrical systems. Attendees were given special access to view the Edison Security Operations Center, a 24/7 state-of-the-art operations center tasked with monitoring security systems throughout SCE's territory.

This valuable experience was part of an ongoing mutual dialogue and professional liaison between critical infrastructure protection professionals to improve security interdependencies among water and power stakeholders, share lessons learned, and expand working relationships among utility security practitioners in the region. SCE infrastructure frequently overlaps, integrates, connects with, and co-resides with Metropolitan critical facilities. This visit is one of many concurrent outreaches between SCE and groups within Metropolitan.

Finance and Administration



Finance

Maintain Strong Financial Position

Provide timely and discerning financial analyses, planning, and management to ensure that forecasted revenues are sufficient to meet planned expenses and provide a prudent level of reserves consistent with board policy.

Manage risk to protect Metropolitan's assets against exposure to loss.

The Risk Management Unit completed 48 incident reports communicating instances of Metropolitan property damage, liability, workplace injuries, regulatory visits, and spills.

Risk Management completed 49 risk assessments on contracts, including professional service agreements, construction contracts, entry permits, special events, and film permits.

Business Continuity

Facilitate district-wide planning and training to prepare employees and managers to effectively carry out critical roles and recover mission essential functions, thus ensuring continuity of operations and resiliency in the event of a disaster.

Manage the Business Continuity Management Program in accordance with Operating Policy A-06.

- Continued facilitating tabletop exercises and Business Continuity plan updates, with a special focus on cyberattack planning.
- Participated in planning meetings to develop a Local Hazard Mitigation Plan per FEMA requirements that would allow Metropolitan to seek grant funding for projects.
- Participated in exercise design and execution of the October 20th emergency drill involving an earthquake scenario impacting the Jensen water treatment plant.
- Spearheaded Metropolitan's ShakeOut earthquake drill on October 20th. An employee-wide "drop, cover, and hold" exercise occurred at 10:20 am in all locations, and the MetAlert emergency notification system sent out alerts.

Financial Management

Manage Metropolitan's finances in an ethical and transparent manner and provide consistent, clear, and timely financial reporting. Update Metropolitan's capital financing plans and work with rating agencies and investors to communicate Metropolitan's financial needs, strategies, and capabilities, thus ensuring that Metropolitan has cost-effective access to capital markets and the ability to finance ongoing future needs. In addition, actively manage Metropolitan's short-term investment portfolio to meet ongoing liquidity needs and changing economic environments.

Record and report the financial activities of Metropolitan in a timely, accurate, and transparent manner to the Board, executive management, member agencies, and the financial community.

- Water Transactions for September 2022 totaled 158.1 thousand acre-feet (TAF), which was 6.7 TAF higher than the budget of 151.4 TAF and translates to \$146.7 million in revenues for September 2022, which was \$1.4 million higher than the budget of \$145.3 million.

- Year-to-date water transactions through September 2022 were 440.0 TAF, which was 21.7 TAF higher than the budget of 418.3 TAF. Year-to-date water revenues through September 2022 were \$411.7 million, which was \$0.3 million higher than the budget of \$411.4 million.
- In September 2022, Accounts Payable processed approximately 3,300 vendor invoices for payment and took advantage of about \$3,400 in discounts.

Manage investor relations to ensure clear communications, accuracy of information, and integrity.

Debt Management staff updated the Municipal Advisor IRMA letter and reposted it on the Metropolitan website and the Investor Relations website. Debt Management staff also initiated the debt service data analytics module on the Investor Relations website. Staff is currently undergoing a verification and reconciliation process of the debt service payment calculations.

Update capital financing plans and work with rating agencies and investors to communicate financial needs and capabilities, ensure cost-effective access to capital markets, and maintain long-term bond ratings of AA or better.

Debt Management staff coordinated the review and sign-off of various agency representatives regarding the Bond Compliance Report for FY22.

Prudently manage the investment of Metropolitan's funds in accordance with policy guidelines and liquidity considerations.

As of September 30, 2022, Metropolitan's investment portfolio balance was \$1.2 billion; in September 2022, Metropolitan's portfolio managers executed 12 trades.

In September 2022, Treasury staff processed 1,015 disbursements by check, 24 disbursements by Automated Clearing House (ACH), and 136 disbursements by wire transfer. Treasury staff also processed 65 receipts by check, 32 receipts by ACH, and 46 receipts by incoming wires and bank transfers.

In addition, there were 7,325 P-Card transactions processed in September 2022, totaling \$1.1M.

Human Resources

HR Priorities

Partner with Metropolitan leadership to support learning, development, and adaptive workforce planning initiatives.

In October, 1,089 Metropolitan employees attended virtually-facilitated classes, including Conflict Resolution, Communication Within Teams, Managing To-Do Lists, Personal Security Awareness, Safety Related Retaliation, and Advanced Word Features.

LinkedIn Learning, Metropolitan's online e-learning content platform, was accessed for such topics as Managing Innovation, Tips for Better Business Writing, and Writing & Delivering Speeches.

The Organizational Development & Training Unit facilitated training for the Sustainability, Resiliency, and Innovation group to strengthen communication and connection between team members.

Seek diverse, high-quality talent, and establish partnerships to discover additional outreach opportunities that aid in staffing positions.

Recruitment successfully filled 26 positions for October. Recruitment received 41 new staffing requisitions resulting in 210 positions currently in recruitment.

The HR Group Manager continued to work with the board search committee in the recruitment process for the General Auditor position. Interviews have been set for November and December.

HR Core Business: Provide Excellent Human Resources Services

Objective #1: Administer all HR services with efficiency and a focus on customer service excellence, consistency, and flexibility.

Constructive negotiations continue with the Supervisors' Association on a successor MOU. Staff will continue to brief the Organization, Personnel, and Technology (OP&T) Committee on the status of those talks.

The Benefits Unit launched the National Retirement Security Month (NRSM) campaign on October 3, 2022, to provide financial and retirement education and fraud prevention techniques to all active employees and retirees enrolled in our 401(k) and 457(b) deferred compensation plans. NRSM is designated by Congress and runs the entire month of October with various communications (emails, postcards, website posting, and videos). Financial Finesse and Empower Retirement hosted nine webinars.

The Benefits Unit is hosting its annual Benefits Open Enrollment period, which concluded on October 17, 2022. Benefits launched its Medical Vesting Election campaign on October 26, ending on November 17, 2022.

Human Resources completed the first phase of the I-sight case management system to track grievances and disciplinary actions.

HR Core Business: Comply with Employment Laws and Regulations

Objective #1: Effectively administer all Human Resources policies, programs, and practices in compliance with applicable federal and state laws and Metropolitan's Administrative Code, Operating Policies, and Memorandum of Understanding.

Human Resources completed the creation of a Recruitment and Selection procedures document in compliance with the State Audit recommendations.

Staff completed revisions to Operating Policy H-04 Abusive Conduct & Workplace Violence Prevention and Operating Policy H-10 Recruitment and Selection to respond to State Audit recommendations.

To ensure a fair and transparent process, staff documented the steps and procedures in the disciplinary process, including the role of management, Human Resources, and others, and distributed the document to all employees.

The Benefits Unit is currently administering 2022 COVID-19 Leaves through December 31, 2022. As of mid-October, 447 leaves of absence have been approved for COVID-related reasons.

On October 11, 2022, staff obtained board approval of a second resolution establishing Metropolitan's medical contributions for retirees under the 10/20 medical vesting schedule of GC 22893 for Plan Year 2023, ensuring compliance with CalPERS regulations and bargaining unit MOU provisions.

On October, 11 new workers' compensation claims were received, and 20 were resolved. Nine employees remain off work due to an industrial injury or illness. Metropolitan continues efforts to accommodate injured workers while enabling them to be productive and on the job.

In addition, staff is collaborating with other Metropolitan stakeholders to implement a new Incident Reporting and Case Management System designed by Ventiv Technology. Staff continues to work closely with our new Workers' Compensation Third Party Administrator, TRISTAR Risk Management.

Activities of the Workers' Compensation/Medical Screening Unit are summarized as follows for October:

- Coordinated one Medical medvan visit (DMV, Respirator Exams, and Hearing Tests) at Soto Street.
- Arranged ten medical evaluations (Pre-employment, DMV, medical surveillance, vanpool program restart).
- Addressed 30 Accommodation issues, referrals, and follow-ups with Shaw Consulting Group.

HR Metrics	June 2022	October 2022	Prior Month September 2022
Headcount			
Regular Employees	1,762	1,775	1,777
Temporary Employees	37	34	32
Interns	2	2	2
Recurrents	18	18	18
Annuitants	19	19	19

Finance and Administration

(continued)

	October 2022	September 2022
Number of Recruitments in Progress (Includes Temps and Intern positions)	210	195
Number of New Staffing Requisitions	41	42
	October 2022	September 2022
Number of Job Audit Requests in Progress	6	6
Number of Completed/Closed Job Audits	0	1
Number of New Job Audit Requests	0	1

Transactions Current Month and Fiscal YTD (includes current month)			
External Hires	FY 21/22 Totals	October 2022	FISCAL YTD
Regular Employees	82	8	32
Temporary Employees	36	0	3
Interns	4	0	0
Internal Promotions	70	6	19
Management Requested Promotions	152	14	35
Retirements/Separations (regular employees)	127	6	14
Employee-Requested Transfers	15	1	6

Departures

Last	First Name	Classification	Eff Date	Reason	Group
Arbouet Jr	Remus	Sr Engineering Technician	9/2/2022	Retirement - Service	WATER SYSTEM OPERATIONS GROUP
Case	John	O&M Tech IV	9/1/2022	Retirement - Service	WATER SYSTEM OPERATIONS GROUP
St Regis	Lisa	Unit Mgr-Budget	9/3/2022	Retirement - Service	FINANCE GROUP
Hanna	Yvette	Sr Engineer	8/13/2022	Resign-Accepted Other Employ	ENGINEERING SERVICES GROUP
Naziri	Babak	Designer III	8/13/2022	Resign-Accepted Other Employ	ENGINEERING SERVICES GROUP
Ward	Brandon	Human Resources Analyst III(C)	8/13/2022	Resign - Relocation	HUMAN RESOURCES GROUP

Diversity, Equity and Inclusion

Business Outreach & Community Engagement

Business Outreach served as a panelist for the OneLA procurement event. Additional participation included matchmaking sessions and staffing an exhibit booth. The event's highlight was networking with the 85 small business owners who graduated from the Small Business Academy. In addition, Business Outreach attended the NLBWA-IE Biz Con and participated in the Small Business Matchmaking Sessions. This event focused on "Facing and Embracing A Digital Future Together in a Rapidly Changing Environment." Lastly, Business Outreach participated in the Regional Hispanic Chamber of Commerce SoCal Business Development Conference and Matchmaking sessions where the focus was to celebrate, inspire and support businesses across the region.

DEI Cross-Functional Engagement & Partnership

Members of the DEI Office have been engaging cross-functionally across Metropolitan to drive key strategic objectives. During October, members of the DEI Office, in partnership with the SRI Office, were active participants in US Water Alliance's "Imagine A Day Without Water" commemoration at Metropolitan. In addition, staff took part in a HireLAX pre-apprenticeship program graduation as a potential model for what Metropolitan can do going forward with the passage of the project labor agreements. Lastly, members of the DEI Team were at the Asian American Architects/Engineers 44th Annual Awards Banquet at the Millennium Biltmore Hotel, where the General Manager was honored as the winner of the Visionary Award.



Tribal Engagement

DEI staff participated in the Colorado River Indian Tribes (CRIT) NatiVisions annual film festival. The two-day event showcased film work from Native American actors, filmmakers, writers & directors. DEI staff also attended the CRIT's Native American Days Expo. Among the many activities, the event celebrated this year's Grand Marshal, 100-year-old Barbara Claw, who is believed to be the oldest living member of the Colorado River Indian Tribes. And recently, Metropolitan's Power Management Team, DEI staff, and representatives of the Chemehuevi tribe met to discuss plans to develop a solar farm for the reservation residents. Additionally, CRIT Career Development Office met with DEI staff to initiate steps in developing a tribal workforce development plan to build awareness and pathways for students seeking a career at Metropolitan.



External Affairs

Highlights

- Director Cordero, GM Hagekhalil, and Metropolitan staff met with members of Bard Water District and the Quechan Tribe to discuss seasonal fallowing partnerships and efficiency investments. (October 6)
- GM Hagekhalil was honored with the Visionary Award by the Asian American Architects and Engineers Association at an event sponsored by Metropolitan and attended by EO/AGM Upadhyay, AGM/CEAO Zinke, and staff. (October 6)
- Director Faessel and Tamaribuchi, AGM Zinke, and GM Hagekhalil attended the Metropolitan-sponsored Orange County Coastkeeper Toast of the Coast event. (October 7)
- GM Hagekhalil, EO/AGM Upadhyay, and Metropolitan staff hosted leaders from the Singapore Public Utilities Board at the Pure Water Southern California advanced treatment facilities to discuss recycled water projects and future supply strategies. (October 7)



From left: Director Cordero, GM Hagekhalil and Metropolitan staff met with representatives of Bard Water District and the Quechan Tribe; GM Hagekhalil received the AAeSC Visionary Award for outstanding contributions at Metropolitan; Tour of Pure Water Southern California facility with Singapore Public Utilities Board.

- Directors Ortega and Quinn, GM Hagekhalil, General Counsel Scully, AGM/CEAO Zinke, and staff attended, and Metropolitan sponsored, Tree People's Under the Harvest Moon dinner. (October 8)
- Chairwoman Gray and Director Jung participated in the Fall Water Council hosted by the U.S. Conference of Mayors. (October 13)
- Metropolitan sponsored an exhibit booth at the Taste of Soul event to share conservation, rebate, and other information with tens of thousands of attendees. Chairwoman Gray and Directors Luna and Williams attended the festival. (October 15)
- Metropolitan sponsored the premier showing of a new documentary, California Watershed Healing, followed by a panel discussion featuring GM Hagekhalil and general managers of other local water agencies (October 15)



Metropolitan provided conservation and rebate information to thousands at the Taste of Soul family festival.

- The Council for Watershed Health honored Director Luna and Felicia Marcus at the organization's 25th anniversary celebration. Metropolitan sponsored the event, which was attended by Directors Ortega, Goldberg, and Sutley, GM Hagekhalil, AGM/CEAO Zinke, Bay Delta Initiatives Manager and Council for Watershed Health board member Arakawa, and staff. (October 18)



Metropolitan sponsored the Council for Watershed Health 25th Anniversary Event which honored Director Luna and Felicia Marcus

- Chairwoman Gray was a guest lecturer at a Pepperdine University graduate course on local government where she spoke about Metropolitan, challenges facing the region's water industry, climate change, and her path to leadership. (October 20)
- GM Hagekhalil was a featured panelist at the ASCE conference, Water Conservation to Improve Resiliency. (October 24)
- GM Hagekhalil participated in a panel presentation to the Delta Stewardship Council, which addressed the issues of Reducing Reliance on the Delta Through Improved Regional Water Self Reliance. (October 27)
- Directors Fellow, Lefevre and Tamaribuchi, GM Hagekhalil, AGM/CEAO Zinke, and Metropolitan staff attended the Southern California Water Coalition annual dinner. (October 27)

Legislative Services

Federal

The Bureau of Reclamation released a request for proposals for the first round of the Inflation Reduction Act funding for drought mitigation projects in the lower Colorado River basin. Reclamation is seeking proposals for projects that will immediately add water to Lake Mead. Metropolitan staff continues to track and monitor this and other federal funding programs.

State

The 2021–22 legislative year concluded, and Metropolitan's two sponsored bills were signed into law. SB 230 (Portantino, D-La Cañada-Flintridge) will help expand knowledge of CECs in drinking water and AB 1845 (Calderon, D-Whittier) authorizes alternative public contracting methods. Additionally, the Governor signed budget trailer bills that provide \$80 million for Pure Water Southern California and \$50 million for drought emergency mitigation projects.

Several of Metropolitan's priority bills were also signed into law including policies to address water quality, urban conservation, Brown Act modifications, and public contracting law.

Local

Metropolitan staff attended the Inland Action 60th Anniversary event where Assembly Majority Leader Gomez Reyes (D-Colton), Senator Roth (D-Riverside), and Assemblymember Ramos (D-Highland) thanked Inland Action for advocating and securing funding to benefit the Inland Empire. Staff also attended a meeting the following week at which DCA Executive Director Graham Bradner presented on the Delta Conveyance Project. (October 12 and 18)

Metropolitan staff presented, monitored or participated in 76 webinars, virtual meetings, and events on water-specific topics.

The Member Agency Legislative Coordinators Annual Planning meeting featured Pablo Garza, Chief Consultant, Assembly Water Parks and Wildlife Committee, staff presentations recapping the year's state and federal legislative sessions, and a review of Metropolitan's proposed legislative priorities for 2023. (October 20)

Media and Communications

Developed and distributed Colorado River talking points to the Board and Member Agencies.

The following interviews were arranged:

- CalMatters with Water Resource Management Team Manager Polyzos on planning for a fourth drought year
- Associated Press and LA Times with Colorado River Resources Manager Hasencamp on Colorado River negotiations
- KNX-AM 1070 with EO/AGM Upadhyay regarding Pure Water Southern California



Chief Engineer Bednarski was interviewed about the Casa Loma Seismic Resiliency Project

- Al Hurra with Metropolitan WRM staff and turf replacement recipients for upcoming Road to Zero documentary
- Civil Engineering Magazine with Chief Engineer Bednarski on Casa Loma Siphon Project to improve seismic resiliency
- Telemundo with a local homeowner and landscape instructor regarding turf replacement classes
- Fox Weather with Water Resource Management Team Manager Polyzos about potential additional water restrictions to conserve Colorado River supplies
- Ten Across Podcast with GM Hagekhalil to discuss drought, innovation, and Colorado River and California water issues
- Los Angeles Business Journal story on Metropolitan's Project Labor Agreements
- Associated Press and GM Hagekhalil on federal drought mitigation funding for Colorado River projects
- Coordinated KABC-TV Channel 7 site visit to Lake Mathews for story on Colorado River

Press Releases

- State funding of \$130 million for Pure Water Southern California and emergency drought mitigation projects
- Board approval of Project Labor Agreement
- Election of Adan Ortega as new Metropolitan board chairman
- Board resolution calling on cities and water agencies to ban non-functional turf

Website

- Launched redesigned Pure Water webpage and garnered more than 62,000 views.
- Logged 187,000 views on bewaterwise.com, with the This is How We Save Water campaign page and turf replacement pages receiving the most visitors.

Creative Design



**ATIBA
PHOTO**

- Produced the first of four new social media posts by influencer Atiba Jefferson that garnered more than 78,000 views of his bewaterwise message within the first days of posting.
- Produced videos of Upper Feeder shutdown and repair for GM and the Engineering and Operations Committee tour.



New Pure Water Southern California webpage

Social Media

- Posted about Metropolitan's "All-Star Status" award from the Climate Registry for meeting its greenhouse gas reduction goal of lowering emissions to 1990 levels.
- Generated more than 15 million impressions on social media platforms for the "This is How We Save Water" conservation advertising campaign.
- Debuted the "Wasting Water Is Unbelievable" conservation video and reposted Water Zombies videos.
- Participated in Water Professionals Appreciation Week by highlighting six employees who are working on projects and initiatives that are responding to drought and climate change.
- Featured now-retired Senior Designer Castellanos's invocation and a quote from Hispanic Employees Association President Duarte for Hispanic Heritage Month.
- Highlighted actions of five employees who are doing their part to reduce their carbon footprint as part of Clean Air Day celebrations.
- Posted stories and videos from two employees to support Imagine A Day Without Water events.



Public Outreach and Member Services

Conducted 10 director inspection trips for water infrastructure, Pure Water Southern California, State Water Project/Delta, and Hoover Dam/Colorado River Aqueduct.

Distributed notices to residents and businesses for Sepulveda Feeder shutdown. (October 19)

Met with member agency managers to provide updates on current issues including Colorado River and State Water Project allocations and proposed 2023 legislative priorities and principles. (October 28)

Pure Water Southern California

Presented to the Covina Woman's Club (October 10), met with Strength-Based Community Change to discuss involvement in outreach (October 26), and provided a tour for Communities for a Better Environment organization. (October 27)



Staffed tables at community outreach events including Azusa Golden Days (October 7), Upper San Gabriel Valley MWD WaterFest (October 15), West Basin MWD Water Harvest (October 22), and in Santa Fe Springs. (October 29)

Conducted virtual scoping meetings with live translation in Spanish and ASL. (October 12, 18, 27, 29)

Education and Community Relations

Metropolitan staff virtually interacted with 6,000 teachers, students and parents through online tours and customized ZOOM class presentations.

Hosted exhibit booths and provided conservation and career information at the Orange County Book Fair with Municipal Water District of Orange County. (October 2)

Community Partnering and Sponsorship Program

Metropolitan sponsored and staff attended the Women in Non-Traditional Employment Roles (WINTER) dinner to support the organization's apprenticeship readiness programs for women in construction careers. (October 27)

The Community Partnering Program supported the following events:

- Lakeside's River Park Conservancy, San Diego River: Watershed Health
- Rivers & Lands Conservancy, California Native Planting Event
- Rancho Santa Ana Botanic Garden, Waterwise Community Festival
- City of Pomona, Water Conservation School Program: Project SPLASH!
- West Basin Harvest Festival

Sustainability, Resiliency and Innovation



Sustainability, Resiliency, Innovation, and Environmental Planning

SRI Core Activities

The SRI Office launched its district-wide process to develop an SRI Strategy for Metropolitan at the monthly Group Managers Meeting. The Chief SRI Officer participated in the WRM CRA tour and discussed water operations, fallowing programs, conservation efforts and land management issues with staff and partners along the aqueduct. The team also played a key role in the Board's Resolution on non-functional turf model ordinance language and in conversations with member agencies on the Colorado River Urban Water Efficiency MOU.

Executive Zero Emission Vehicle (ZEV) Task Force

The first meeting of the Executive Zero Emission Vehicle (ZEV) Task Force was held on October 13, 2022. The Task Force is charged with developing a district-wide strategy to transition Metropolitan's fleet to zero-emission vehicles. The Task Force will continue to meet bi-monthly to address next steps and identify the roles and responsibilities that are necessary to meet our climate goals and comply with state regulatory requirements.

Sustainable Procurement Policy

The SRI Office, Administrative Services Group, and our Risk Manager began the revision of Metropolitan's G-05, Operating Policy for Procurement of Goods and Services, and the Metropolitan Contracting Procedures Manual, to include sustainable procurement practices. Empower Procurement is sponsored by the California Energy Commission and is assisting Metropolitan with this task. Empower offers its services free of charge until December 31, 2022.

Electric Program Investment Charge (EPIC) Symposium

SRI attended the symposium sponsored by the California Energy Commission (CEC), Pacific Gas and Electric Company (PG&E), Southern California Edison Company (SCE), and San Diego Gas & Electric Company (SDG&E). The symposium provided ideas on the status of advancing electric technologies for buildings, businesses, and transportation, and expanding the use of renewable energy.

Imagine A Day Without Water Event

SRI hosted the Imagine a Day Without Water—Employee Open Mic at Metropolitan Water District Headquarters and online via Zoom on October 20, 2022. Employees from every Metropolitan facility are invited to share their own water equity stories and perspectives on this national day of action to advance greater and more equitable investment in water. Employees are encouraged to share through dance, spoken word, music, art, or other form of expression. Water conservation messages and advocacy about the value of water were shared. Two hundred employees registered.

Sustainability, Resiliency and Innovation



Metropolitan Sustainability, Resiliency, and Innovation office, staff performers, and GM Adel Hagekhalil at the Imagine a Day Without Water—Employee Open Mic.

Innovation

World Water Tech North America Summit

The SRI team participated in Keynote presentations, panel discussions, round table discussions, and one-on-one matchmaking sessions at World Water Tech North America. The summit brought together 265 senior-level water leaders from 17 countries over two days of critical debates and networking to tackle drought and water scarcity across North America.



World Water Tech Summit Day 2 Keynote Presentation began with the California Spotlight Session where five water experts, including Metropolitan's GM Adel Hagekhalil, led a critical discussion on tackling drought and water scarcity in the region including [@LADWP](#), [@mwdh2o](#), [@OCWDWaterNews](#), [@usepagov](#), and [@SanDistricts](#).

Sustainability, Resiliency and Innovation



Metropolitan’s Michael Thomas presented “Game Changing Tech Adoption” on the Champions of Innovation Reverse Pitch Panel for the SRI Innovation Team at the World Water Tech Summit.

Western Water Technology Approval Group (TAG) 32

Metropolitan’s SRI Innovation, Engineering, Operations, Water Quality, WRM, and IT teams joined 48 Western Water TAG Members on October 5 for peer-to-peer discussions; partnering, piloting, and funding opportunities; and to evaluate five new technologies. The evaluated technologies at TAG 32 included low-cost spectrometer-on-a-chip for online water quality analysis and condition-based monitoring; smart condition monitoring for AC-induction motors and rotating equipment; underground asset monitoring and leak detection service using existing fiber optic cables; autonomous, in-line pre-screening inspection devices for identification of pipeline risks and performance issues; and ultrafiltration ceramic membrane process, capable of zero-liquid discharge (ZLD). Isle’s Technology Approval Group (TAG) is a global innovation forum of the world’s leading water utilities. Over 70 innovative and forward-thinking US water and wastewater utilities are members of the US TAG forums.

14th Annual WaterSmart Innovations (WSI) 2022 Conference and Expo

Metropolitan’s SRI Innovation team joined Metropolitan’s WRM team at WaterSmart Innovations Conference and Expo 2022 on October 4–6. SRI’s Innovation team has been participating in the conference for over 10 years. The conference brought together over 700 water conservation and sustainability leaders from 28 countries. The conference focused on how water utilities and systems are increasingly challenged by climate change, emerging contaminants, evolving regulations, aging infrastructure, conservation needs, and much more. Solutions presented included how new technologies are being invented, new strategies and programs are being developed, new ways to engage customers are arising, and new models for managing and governing systems for drinking water and wastewater are being explored.

Sustainability, Resiliency and Innovation



[WSI Conference@WSIConfExpo](#)—Droughts, floods & other impacts of [#ClimateChange](#) are shaping the [#FutureOfWater](#). At WaterSmart Innovations, discover [#WaterInnovations](#) to help [#WaterUtilities](#) achieve [#sustainability](#).



Presentation at WaterSmart Innovations Conference by Metropolitan Innovative Conservation Program (ICP) Grant Award Winner Responsive Drip Irrigation. [Responsive Drip Irrigation](#)—RDI compared the water consumption of their “nature-driven” GrowStream™ irrigation system with a standard drip irrigation system using a smart controller.

Environmental Planning Section

Core Business: Environmental Planning and Regulatory Compliance Support

Engineering Services Group

Etiwanda Pipeline Relining Project

Participated in construction meeting and facilitated Worker Environmental Awareness Protection training in compliance with the Mitigation Monitoring and Reporting Program before construction.

Pure Water Southern California

- Released for public review the Notice of Preparation of a Draft Environmental Impact Report (EIR) and schedule of public scoping meetings.
- Attended two community outreach events to inform the public about the Pure Water Southern California program and environmental scoping phase (see photos).
- Facilitated two virtual scoping meetings to inform the public about the project and accept comments and input regarding the content of the Draft EIR.
- Completed field surveys and site visits for technical studies.

Sustainability, Resiliency and Innovation



Metropolitan Environmental Planning Section staff conducting outreach during the scoping phase of the Pure Water Southern California Program at Azusa Golden Days



Metropolitan Environmental Planning Section and External Affairs Group staff conducting outreach for the Pure Water Southern California Program at Upper San Gabriel Valley Municipal Water District's WaterFest

Weymouth Water Treatment Plant and La Verne Site Improvements Program EIR

Met with the City of La Verne to discuss seven proposed projects and the schedule for the EIR.

Construction Monitoring

- Conducted construction monitoring for Western San Bernardino County Right of Way and Infrastructure Protection Program, La Verne Shops Building Completion Stage 4, Prestressed Concrete Cylinder Pipeline (PCCP) Rehabilitation Valve Storage Building, Orange County Feeder Relining Reach 3, Weymouth Basins 5-8 Rehabilitation, La Verne Shops Upgrades, Weymouth Battery Energy Storage Systems, and Live Oak Reservoir Cathodic System Replacement.
- Completed restoration monitoring of the Allen McColloch Pipeline PCCP Urgent Relining Project.
- Finalized and submitted Post-Installation Monitoring Report and As-Built Report for the Allen McColloch Pipeline PCCP Urgent Relining Project to U.S. Fish and Wildlife Service, California Department of Fish and Game, and Orange County Natural Communities Coalition.

Sustainability, Resiliency and Innovation

External Affairs Group

- Participated in preparation of informational outreach materials and videos in support of the Pure Water Southern California Program.
- Participated in monthly California Council for Environmental and Economic Balance (CCEEB) Natural Resources Task Force meeting.

Sustainability, Resiliency, and Innovation Office

Climate Action Plan (CAP) Monitoring and Reporting

- Continued development of the CAPDash webpage, which will be available on Metropolitan's public website, for tracking and reporting of emissions and emissions reductions
- Conducted data gathering from Metropolitan staff regarding natural gas equipment used throughout Metropolitan, in accordance with CAP Scoping Measures DC-1 and DC-2 to inventory, survey, and replace natural gas-consuming equipment at Metropolitan.
- Continued preparation of document templates and guidelines for subsequent CEQA review for projects covered under the CAP and for greenhouse gas (GHG) CEQA analysis for other Metropolitan projects relying on the CAP.

Water System Operations Group

- Monitored dewatering and construction during the San Diego Pipeline Nos. 3 and 5 shutdowns.
- Finished environmental construction monitoring and completed post-construction monitoring reporting for the Upper Feeder Emergency Leak Repairs project (see photo).
- Conducted site visit to Colorado River Aqueduct/Desert borrow sites with staff from California State Mining and Geology Board (SMGB) and the California Department of Conservation in support of preparation of the draft Reclamation Plan under the Surface Mining and Reclamation Act (SMARA); received final comments on the draft Reclamation Plan from SMGB; and prepared to release the draft Reclamation Plan and Mitigated Negative Declaration for public review.



Environmental Planning Section staff conducting environmental monitoring during the Upper Feeder Emergency Repairs Project

Sustainability, Resiliency and Innovation

Reserve Management

Lake Mathews Multiple Species Reserve

- Conducted vegetation surveys to establish baseline conditions in potential restoration areas.
- Repaired portions of vandalized Reserve boundary fencing and conducted security patrols.
- Installed signs donated to the Riverside County Habitat Conservation Agency from Southern California Edison to alert drivers in the Reserve to be mindful of Stephens' kangaroo rat (see photo).



Signage installed in the Lake Mathews Multiple Species Reserve for protection of the federally listed Stephen's kangaroo rat

Southwestern Riverside County Multi-Species Reserve

- Implemented long-term tree pest monitoring and established photo points for tree test plots to document changes.
- Conducted roadside weed abatement and security patrols.
- California Conservation Crew forces removed and performed stump cut treatment on approximately two acres of invasive tamarisk in Tucalota Creek.

Equal Employment Opportunity



Equal Employment Opportunity

Expanding EEO Office Resources

The EEO Office has hired its final member to complete the investigative team. The new Principal EEO Analyst will start on October 31, 2022.

“Know Your Rights”

On October 19, 2022, the U.S Equal Employment Opportunity Commission (EEOC), just released its updated “Know Your Rights” poster, which replaces the “EEO is the Law” poster. Covered employers, which includes Metropolitan, are required by federal law to prominently display the poster at their work site. Metropolitan has already printed and posted the posters throughout headquarters and disseminated them to the facilities for posting.

State Audit Recommendations

The EEO Office has submitted all applicable documents relevant to the CSA EEO recommendations. The EEO Complaint and Investigative Procedures and the EEO Concurrence Process were submitted by the October 20, 2022, deadline. In addition, the iSight case database system went live on the same day. EEO will start the process of uploading the more recent EEO cases into the system over the next several months.

Professional Development



ASSOCIATION OF
WORKPLACE INVESTIGATORS

Promoting and enhancing the quality of impartial workplace investigations.™

Metropolitan’s Chief EEO Officer and Deputy Chief EEO Officer attended the 2022 AWI Annual Conference held October 12–14, 2022. AWI is a professional membership association for those who conduct, manage, or have professional interest in workplace investigations. The conference offered sessions such as “Grab a Front Row Seat for C-suite Investigation,” “To Investigate or Not to Investigate,” and “Navigating the Workplace Sexual Assault Investigation from an Internal and External Perspective.” As AWI members and Certificate Holders, both the Chief EEO Officer and Deputy Chief EEO Officer will continue to hold Metropolitan’s EEO Office to high standards and implement best practices for EEO investigations.



Metropolitan's Mission is to provide its service area with adequate and reliable supplies of high-quality water to meet present and future needs in an environmentally and economically responsible way.

700 N. Alameda Street, Los Angeles, CA 90012
General Information (213) 217-6000
www.mwdh2o.com www.bewaterwise.com

General Manager: Adel Hagekhail
Office of the GM (213) 217-6139
OfficeoftheGeneralManager@mwdh2o.com